

CAMP KID SCOOP

BUG-A-PALOOZA

www.kidscoop.com

Find Kid Scoop on Facebook

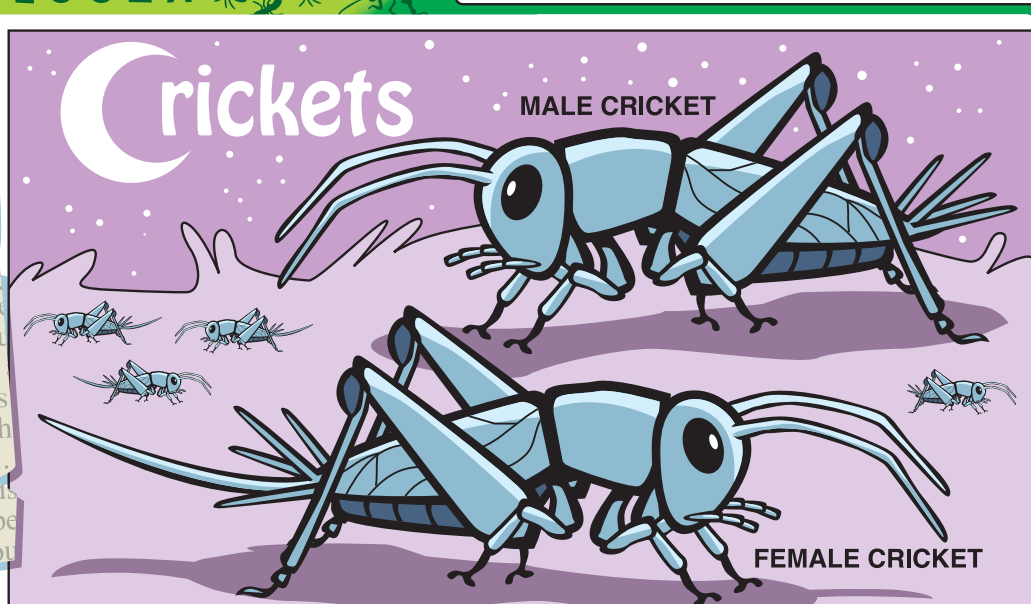
© 2015 by Vicki Whiting, Editor Jeff Schinkel, Graphics Vol. 31, No. 33

FLYSPECK FLYER

A Little Night Music

By Nellie Fly
WORLD'S SMALLEST REPORTER

This summer, when the nights get warmer, listen for nature's night music. Some of the music may be coming from a tiny nocturnal musician, no more than one-inch in length. It is the cricket.



Male or Female?

Only male crickets sing. You can tell a female cricket from a male because the female has a long spike on its tail end. This is used to lay eggs.

Find and circle the female crickets on this page.

Standards Link: Life Science: Understand that animals have structures that aid in reproduction.

How a Cricket "Sings"

The male cricket has bumpy veins on his front wings. He rubs his wings together to "sing."

Where is a cricket's ear?

Other crickets can hear a male's song with this part of their bodies. To find out what it is, write down the letters along the correct path through the maze.

Kid Scoop Hands-On Experiment Lab

How far can a cricket jump?

Work with a friend and give this investigation a try!

- Catch a cricket. Look at it and try to guess how far it can jump.
- Using chalk or a rock, mark a starting point on the ground, such as a playground.
- Set down your cricket and gently tickle its tail end with a soft cotton swab to make it jump.
- After it jumps, mark the spot where it landed. Measure the distance between the two spots.
- Make a record of your cricket's jump in a notebook. Try this with several crickets and compare the distances they jump. Calculate the average of the distances.

Please return us to the spot where you found us. Thank you!

Standards Link: Investigation: Conduct simple experiments and record results.

Thermometer Crickets

The warmer the weather, the faster crickets chirp. They usually don't chirp if the temperature is above 100° F (38° C) or below 55° F (13° C). The snowy tree cricket is called the "thermometer cricket" because if you add 40 to the number of chirps it makes in fifteen seconds, you get the actual temperature in degrees Fahrenheit!

Number of chirps in 15 seconds	Temperature
30	+ 40 = _____ ° F
36	+ 40 = _____ ° F
42	+ 40 = _____ ° F
53	+ 40 = _____ ° F
48	+ 40 = _____ ° F

Standards Link: Life Science: Understand that animals have structures that aid in survival.

Find the cricket that is different.

Bug Hunt

Hunt through the newspaper for "buggy" things: Try to find:

- a picture of a bug
- the name of a bug
- a verb that describes something a bug does
- something a bug likes to eat
- something that eats bugs

Standards Link: Life Science: Know a variety of animals, their habitats and characteristics.

Catch the Reading Bug at Your Library This Summer!

After Chester, a cricket, arrives in the Times Square subway station, he takes up residence in a newsstand. Can Chester help to bring success to the almost bankrupt newsstand?

Fill in the missing vowels on this book. Then, check it out at your local library!

- Bert Bookworm

Standards Link: Reading Comprehension: Read age-appropriate text in a variety of genres.

Double Double Word Search

Find the words in the puzzle, then in this week's Kid Scoop stories and activities.

S	R	E	T	S	E	H	C	Y	T
R	I	S	A	D	R	K	W	W	U
P	V	E	I	N	S	O	I	L	A
O	R	T	N	N	N	C	P	T	
E	U	I	C	S	G	E	M	K	S
M	N	I	H	S	S	U	T	T	H
S	E	N	A	C	J	T	E	N	T
C	R	I	C	K	E	T	M	E	A
T	I	E	H	N	E	R	H	A	F

Standards Link: Letter sequencing. Recognized identical words. Skim and scan reading. Recall spelling patterns.

FROM THE Kid Scoop LESSON LIBRARY

Cricket Poems

Look through the newspaper and select ten or more words that describe crickets. Write a poem or story using these words.

Standards Link: Writing Applications: Write a variety of genres including poetry.

Who is green, covered in soot and hangs around with Pinocchio?

ANSWER: Chimney Cricket.

NEWSPAPER CARRIERS NEEDED The Daily Astorian has several routes available in the Astoria area. Call 503-325-3211 for more information.

Thanks to the following businesses for supporting Newspapers In Education
www.dailyastorian.com/site/newspapers_in_education/

- Appelo Archives Center
- Sam's Seaside Café
- Hees Enterprises, Inc
- Quackenbush Builders Inc.
- Bridgewater Bistro
- Clatsop Truck & Equipment
- Clatsop Behavioral Healthcare
- Le's Income Tax
- Kuuma Saavi Works
- Bergerson Construction
- Diane Barendse, CPA
- Lazerquick Seaside/Astoria
- Mark J. Lang, Attorney at Law
- Premium Adjustable Beds
- Suzanne Elise Assisted Living
- Solum Roofing & Gutters
- Astoria Marine Construction
- Jonathon's LTD
- Seaside Oregon Visitors Bureau

Great Ocean
Da Yang Seafoods LTD.

EMERALD HEIGHTS APARTMENTS Affordable Place to Call Home
Astoria, OR Call 325-8221 for more information

Astoria Forest Products, LLC
10 Pier 1 • Suite 301
Astoria, Oregon 97103

KOA Astoria, Warrenton, & Seaside
1100 Northwest Ridge Road
Hammond OR 97121
reservations 800-562-8506
info 503-861-2606

Northwest West Inc. Income Tax Preparation
762 Avenue G, Seaside, OR 97138
503-738-3480

Tires LES SCHWAB WARRENTON 861-3252
1167 S.E. MARLIN SEASIDE 738-9243
MCCALL TIRE CENTER 2155 S ROOSEVELT

Heather's COUNTRY HAVEN AFHS
503-325-2438
87943 Highway 202, Astoria, OR 97103

MOBERG & RUST ATTORNEYS AT LAW
842 BROADWAY STREET SEASIDE, OR 97138 (503) 739-6380

LOWER COLUMBIA CLINIC FAMILY PRACTICE
Thomas S. Duncan, MD
Susan L. Skinner, CNM, CFP
595 18th, Astoria • 325-9131
Emergency Office Hours: 503-861-5515

MARTIN L ALVEY P.C.
Astoria office • 10 Pier One, Ste 303
Astoria, OR 97103
Phone: 503-325-5509 • Toll Free: 866-509-3516

Home Furnishings
1033 Commercial Street
Astoria, Oregon 97103
(503)325-5620

Morgan Civil Engineering
PO Box 358 • Manzanita
503-368-6186

MARITIME TEXACO
1701 Marine Dr
Astoria, OR 97103
1-503-325-7812

10 Pier 1 Ste. 308 | Astoria
503-741-3300
PORT OF ASTORIA

Classic BODYWORKS 503.325.0411
34747 Hwy 101 Bus.
Astoria
AND TOWING

LEWIS & CLARK OREGON TIMBER, LLC
Managed by the Campbell Group, LLC

RE/MAX River & Sea

TERRY'S PLUMBING (503) 325-5180
2095 Marine Drive | Astoria

Pacific Sleep Program Portland & Astoria | Setting the standard in sleep medicine for over 30 years
2120 Exchange St | Suite 302 | Astoria
503.325.3126

Teerin Bros. LAND & TIMBER CO.
ASTORIA | 503-556-0410

at The Hallmark Resort
1400 S Hemlock, Cannon Beach, OR
503-436-0366
ELEMENTS BY THE SEA

COLUMBIA RIVER BAR PILOTS
ESTABLISHED 1886
Providing safe passage since 1846

CLATSOP POWER EQUIPMENT INC.
34912 HWY. 101 BUSINESS
ASTORIA | (503) 325-0792

AstoriaPointe
263 W Exchange • Astoria | (877) 435-7790
Rosebriar at Astoria Pointe