

Man pleads not guilty to sexually exploiting teenager

By KYLE SPURR
The Daily Astorian

The 26-year-old Warrenton man accused of sexually exploiting a 16-year-old girl pleaded not guilty Monday in Clatsop County Circuit Court.

Kyle Meyer Bloom pleaded not guilty to using a child in a display of sexually explicit conduct for compelling the girl to send nude images of herself, luring a minor and two counts of third-degree sex abuse.

Bloom appeared via video link from Clatsop County Jail, where he is being held on \$250,000 bail. His appointed defense attorney Kris Kaino intends to ask the court for a bail hearing to decide if bail should be lowered.

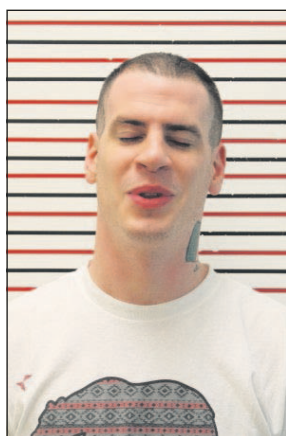
The charges against Bloom stem from a six-week investigation by the Clatsop County Sheriff's Office.

Sheriff's deputies arrested Bloom May 20 on the 500 block of West Main Street in Warrenton.

Bloom initiated contact with the girl at a local school bus stop, where he befriended her before using social media to start a secretive relationship, according to the Sheriff's Office.

During a two-week long relationship, Bloom allegedly met the girl in several public locations to engage in sexual activities.

According to an indict-



Bloom

ment filed May 27, the alleged crimes occurred from April 1 to his arrest.

The Sheriff's Office believes there are no other victims in the case.

Sheriff's Office Detective Ryan Humphrey said the relationship between Bloom and the girl was discovered by the girl's parents and the parents of one of the girl's friends.

The parents' involvement and intervention was a key factor in the case, Humphrey said.

The Sheriff's Office is encouraging parents to monitor their children's use of social media and other online activities. When examining a child's online activities and contacts on social media, the Sheriff's Office suggests parents or guardians ask, "Does this make sense?"

Bloom is due back in court for an early resolution conference at 9 a.m. June 24.

Columbia River sport all-depth halibut fishery now closed

The Daily Astorian

NEWPORT — Because of high catch rates for the first time since 2011, the Pacific halibut all-depth sport fishery in the Columbia River Subarea will close effective 11:59 p.m. Wednesday, fishery managers announced Tuesday.

The spring fishery from Leadbetter Point in Washington state to Cape Falcon in Oregon opened May 1 and was scheduled to be open every Thursday-Sunday through Sept. 30 or the harvest of 9,754 pounds of Pacific halibut, whichever came first.

The all-depth fishery was scheduled to open again Thursday, but preliminary estimates indicate that landings are nearing the quota and not enough remains for any additional open days. The season is now closed until the end of the year.

Effort in the Columbia River Subarea in 2015 was higher than in recent years and catch rates were good, enabling anglers to harvest the entire quota for this fishery for the first time since 2011.

The Columbia River nearshore fishery (inside the 40-fathom line off of Oregon) remains open Mondays through Wednesdays until

Sept. 30 or until the quota of 500 pounds is reached, whichever comes first.

Opportunities to fish for Pacific halibut remain open in other areas of Oregon:

Off central Oregon between Cape Falcon (near Manzanita) and Humbug Mountain (near Port Orford), anglers may fish for halibut inside the 40-fathom line beginning July 1, seven days a week through Oct. 31 or attainment of the harvest quota for that fishery. The all-depth halibut fishery off central Oregon is scheduled to be open June 11-13 and June 25-27. A second summer season is scheduled to begin in August. The high-relief area of Stone-wall Bank, west of Newport, is closed to all halibut fishing.

The area between Humbug Mountain and the Oregon-California border is open at all depths for Pacific halibut seven days a week through Oct. 31 or until the quota of 7,318 pounds has been met, whichever comes first.

Days on which Pacific halibut fishing is open will be announced on the NOAA Fisheries hotline, 800-662-9825, and posted on the ODFW Marine Resources Program Web site.

Alzheimer's task force offers memory cafe

The Daily Astorian

The Clatsop County Alzheimer's Task Force is offering its second Neighbor Memory Café from 1 to 3 p.m. Saturday at Columbia Hall, Clatsop Community College, 1651 Lexington Ave. There is no cost for this Hawaiian-themed event, which has live guitar music provided by Dave Drury.

The Neighborhood Memory Café welcomes people with a diagnosis of dementia or a related disease and their family members or care partners, people with mild cognitive impairment and people who are concerned about their memory loss. The Neighborhood Memory Café is open to

anyone without formal referral or assessment. However, the café would not be appropriate for individuals who often have aggressive or disruptive behaviors.

The Memory Café concept is being used worldwide to offer support to families dealing with dementia-related disease. Social engagement is essential for both the person dealing with dementia as well as family members and care partners. The task force is actively seeking other agencies and organizations that would be willing to host Memory Cafés throughout the county.

For information, or to register to attend the Café, call Michelle Lewis at 503-861-4202.



JOSHUA BESSEX — The Daily Astorian

The U.S. Coast Guard cutter Woesche is shown docked along Pier 1 in Astoria Tuesday. The 418-foot-long National Security Cutter is from Coast Guard Island in Alameda, Calif.

Visiting cutter offers look at Coast Guard's future force

By EDWARD STRATTON
The Daily Astorian

The future of the U.S. Coast Guard's cutter forces visited Astoria Tuesday.

The 418-foot, high endurance cutter Woesche stopped at the Port of Astoria's Pier 1 Tuesday and Wednesday morning on its way to the Portland Rose Festival.

The cutting-edge ship, launched in 2008 and named after former Coast Guard Commandant Adm. Russell Woesche, is based on Coast Guard Island in Alameda, Calif. It is the second of eight planned Legend-class national security cutters, part of an acquisition program to replace aging 378-foot high endurance cutters in service since the 1960s. The average price tag for a national security cutter is more than \$600 million.

Two other national security cutters are based on Coast Guard Island. Two more are based in Charleston, S.C., with a third coming. The last

two are planned for Hawaii and Kodiak, Alaska.

As a high endurance cutter meant for the open ocean, the Woesche has a range of 12,000 nautical miles at 28 knots, with an endurance of two months or more. Compare that to the offshore, medium endurance cutters Alert and Steadfast based in Astoria and patrolling the U.S. Exclusive Economic Zone, with ranges of 5,000 nautical miles at 15 knots and an endurance of one month.

"We definitely stay out the longest," said Ensign Thomas Ashley, a public affairs officer on board.

The ship carries with it more than 120 crew, about 20 officers, several small boats, room for two HH-65 Dolphin helicopters and a range of advanced weapons and navigation systems.

The ship is built to serve as operational-level headquarters for law enforcement, defense and national security missions involving Coast Guard and multiple partner agencies.

"We do a lot of drug and migrant interdiction," Ashley said of the Woesche's mission.

While the national security cutters like Woesche replace the 378-footers built in the 1960s, the Coast Guard recently began an acquisition program to replace 270- and 210-foot medium endurance cutters, like Astoria's Alert and Steadfast built in the late 1960s, with offshore patrol cutters.

Coast Guard Commandant Adm. Paul Zukunft said in testimony Feb. 25 to the U.S. House Subcommittee on Coast Guard and Maritime Transportation that his highest investment priority for the Coast Guard's fiscal year 2016 budget is recapitalizing the aging medium endurance cutter fleet with the offshore patrol cutter.

"The offshore patrol cutter will be the backbone of Coast Guard offshore presence and the manifestation of our at-sea authorities," Zukunft said in his testimony. "The offshore patrol cutter is essential to stopping smugglers at sea, interdicting undocumented migrants, rescuing people, enforcing fisheries laws, responding to disasters and protecting our ports."

The offshore and medium endurance cutters provide a bridge in capabilities between the larger high endurance or national security cutters and the smaller fast response cutters. Astoria or Newport are in the running for two 154-foot Sentinel-class fast response cutters, which are replacing the 1980s-era 110-foot Island-class patrol boats.

WANTED
Alder and Maple Saw Logs & Standing Timber
Northwest Hardwoods • Longview, WA
Contact: Steve Axtell • 360-430-0885 or John Anderson • 360-269-2500

Consult a PROFESSIONAL

LEO FINZI
Microsoft REGISTERED Refurbisher
Desktop Computer Inventory Reduction Sale. 20% off all desktop computers in stock.
Astoria's Best NETWORK AND COMPUTER SALES, SERVICES & REPAIRS
M-F 10-6, Sat 12-5
1020 Commercial #2
503-325-2300

Q: All of the little icons and shortcuts on my desktop disappeared. How do I get them back?
A: On a blank spot on your desktop (probably anywhere now) RIGHT CLICK your mouse, and then place the pointer over the word VIEW, and a new window will open to the right. Near the bottom of that new window, you will see SHOW DESKTOP ICONS. LEFT CLICK on that to put a checkmark there. Voila! Repeat the procedure to hide your desktop shortcuts from spying eyes.

JEFFREY M. LEINASSAR
DMD, FAGD
LEINASSAR DENTAL EXCELLENCE
503/325-0310
1414 MARINE DRIVE, ASTORIA
www.smileastoria.com

Q: My child's baby teeth have cavities. Why should they be filled if they are just going to fall out in a few years?
A: Children's teeth are very important to the health of the child and the development of the dental jaw and forming permanent teeth. Baby teeth not only give the child chewing function, cute esthetics, but also serve an important role in the jaw formation. Premature loss of primary teeth can adversely affect the jaw growth, position and timing of the eruption of permanent teeth, and if badly decayed or infected be a source of pain, sickness, and risk to other teeth. Please have your dentist evaluate your child's "baby teeth".

DRIFTWOOD & PEARL
Cynthia Altieri
astoria SUNDAY MARKET
AstoriaSundayMarket.com
Now through Oct. 11
12th Street • 10am to 3pm

Q: Do you gather your driftwood and shells for your jewelry?
A: Yes! My daughter and I regularly comb the beaches for shells, driftwood and other treasures. We thoroughly clean each piece. We also get some of our shells from oyster farms. All my jewelry is North Coast inspired.

LIFECARE MEMBER
LIFE FLIGHT NETWORK
MEDIX
2325 SE DOLPHIN AVE. WARRENTON
503-861-5558
www.medix.org

Q: What is the coverage area for LifeCare membership?
A: LifeCare members are covered for ground transportation throughout all of Oregon.
Open enrollment through June 30th.