

CAMP KID SCOOP

BUG-A-PALOOZA

www.kidscoop.com

Find Kid Scoop on Facebook

© 2015 by Vicki Whiting, Editor Jeff Schinkel, Graphics Vol. 31, No. 26



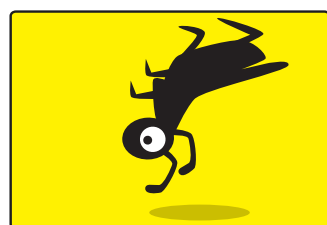
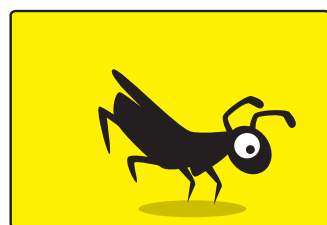
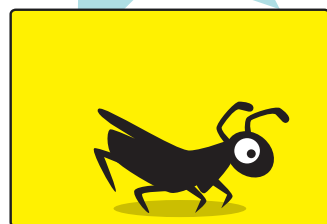
Cool Careers with Bugs

By Nellie Fly
WORLD'S SMALLEST REPORTER
Do you love bugs? How would you like to have a job where you got to be with bugs everyday?

You might want to study **entomology**. Entomology is the study of insects and an **entomologist** is a bug scientist. There are lots of careers for entomologists!

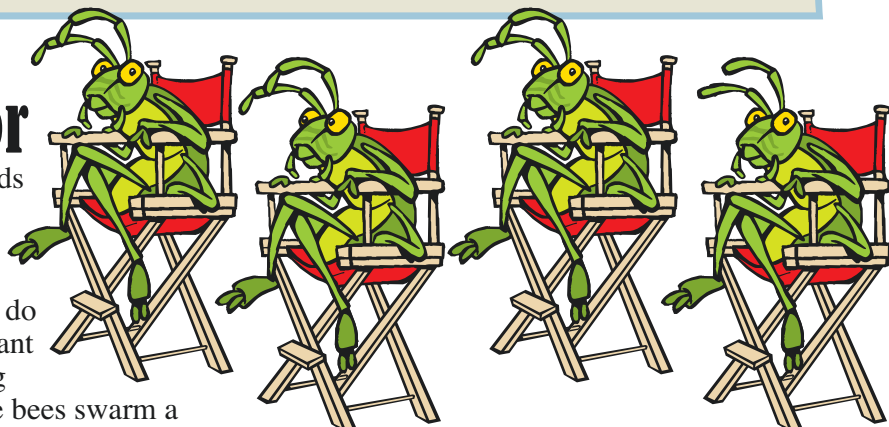
Lights! Camera! Action!

Make a flipbook! Paste each of these pictures on heavy paper (an old deck of cards works great). Flip the cards to see this bug flip out!



Bugs in the Movies: Bug Director

When a movie scene needs bugs, who gets a call? **Entomologists** study how insects behave, they know how to get them to do things movie directors want them to do. Bug directing entomologists have made bees swarm a beekeeper for a fried chicken commercial and made a cockroach run across a floor then flip over!



Find the two identical movie bugs.

Bug Zookeeper

Many zoos have bug exhibits with live bugs and they need entomologists to take care of the bugs. Entomologists create special terrariums that imitate each bug's natural habitat. Entomologists also know what kind of food to feed their bugs and how much heat and light they like.



Label the Bug Exhibits!

Which label goes with which symbol? Unscramble the letters on each label and then draw a line from the label to its corresponding exhibit symbol.

RATANULAT

ITMRETE

KECTRIC

RDGANOYLF

THROEN

ELRIPTACLAR

Standards Link: Spelling: Spell grade-level appropriate words correctly.

Bugs Help Solve Murder Mysteries

By Nellie Fly
WORLD'S SMALLEST REPORTER
Some entomologists help solve murder cases. A certain kind of insect called a blowfly is to dead bodies (and human). Entomologists know how long it takes for a blowfly to hatch and how long it takes to grow to certain in the larva stage. By looking at the insects found in a body, scientists can figure out how long the body has been dead. Knowing the time of death an important to solving the crime.

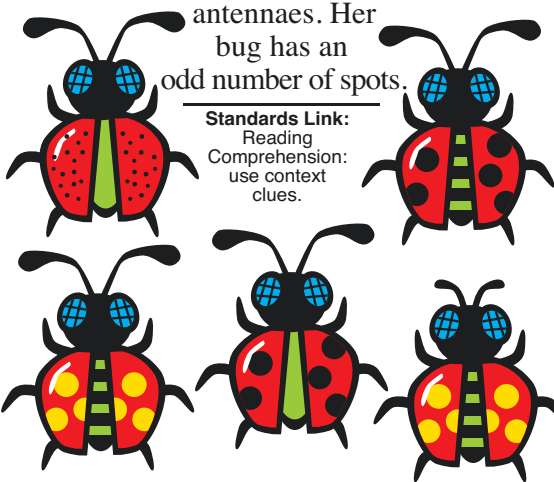
Draw a line from each missing word to where it belongs in this article.

- animal
- dead
- attracted
- offers
- egg
- clue
- sizes

Standards Link: Life Science: Students know that animals progress through life cycles.

Which Bug is Betty's Bug?

Betty's bug has spots but not tiny ones. It has stripes but it doesn't have short antennae. Her bug has an odd number of spots.



Standards Link: Reading Comprehension: use context clues.

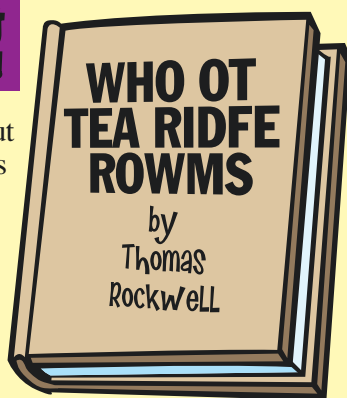
Extra! Extra! Bug Verbs

Look through the newspaper for verbs that describe the way different kinds of bugs move. Copy these verbs onto a piece of paper in abc order.

Standards Link: Grammar/Spelling: Identify verbs; list words in alphabetical order.

Catch the Reading Bug at Your Library This Summer!

This book that has been grossing out children and adults since 1973. This is the story of Billy, a ten-year-old who takes a bet that he will eat 15 worms in 15 days—all for \$50.



Unscramble the title of this book. Then, check it out at your local library this summer! - Bert Bookworm



Standards Link: Reading Comprehension: Follow simple written directions.

Double Double Word Search

- INSECTS
- ENTOMOLOGY
- HORNET
- NATURAL
- SWARM
- DIRECTOR
- STAGE
- LARVA
- CRIME
- CRICKET
- IMITATE
- FLOUR
- BUGS
- HARM
- HEAT

Find the words in the puzzle, then in this week's Kid Scoop stories and activities.

R O T C E R I D B U
F L O U R N G B L N
M R A W S I U S A C
T O T E N G M T R R
T A C E S H U E V I
E T E T N R M O A C
S V A H A R M I E K
Y G O L O M O T N E
E T A T I M I H S T

Standards Link: Letter sequencing. Recognized identical words. Skim and scan reading. Recall spelling patterns.

FROM THE Kid Scoop LESSON LIBRARY

Bug Business

Look through today's newspaper for examples of businesses that can be affected by bugs. For example, grocery stores have a problem if moths get into their flour. What other examples can you find?

Standards Link: Life Science: Know that distinct environments support the life of different plants and animals.

What do you call bugs that live on the moon?

ANSWER: Lunar ticks!

NEWSPAPER CARRIERS NEEDED The Daily Astorian has several routes available in the Astoria area. Call 503-325-3211 for more information.

Thanks to the following businesses for supporting Newspapers In Education
www.dailyastorian.com/site/newspapers_in_education/

- Appelo Archives Center
- Sam's Seaside Café
- Hees Enterprises, Inc
- Quackenbush Builders Inc.
- Bridgewater Bistro
- Clatsop Truck & Equipment
- Clatsop Behavioral Healthcare
- Le's Income Tax
- Kuuma Saavi Works
- Bergerson Construction
- Diane Barendse, CPA
- Lazerquick Seaside/Astoria
- Mark J. Lang, Attorney at Law
- Premium Adjustable Beds
- Suzanne Elise Assisted Living
- Solum Roofing & Gutters
- Astoria Marine Construction
- Jonathon's LTD
- Seaside Oregon Visitors Bureau

Great Ocean
Da Yang Seafoods LTD.

EMERALD HEIGHTS APARTMENTS
Affordable Place to Call Home
Astoria, OR Call 325-8221 for more information

Astoria Forest Products, LLC
10 Pier 1 • Suite 301
Astoria, Oregon 97103

KOA
Astoria, Warrenton, & Seaside
1100 Northwest Ridge Road
Hammond OR 97121
reservations 800-562-8506
info 503-861-2606

Northwest West Inc. Income Tax Preparation
762 Avenue G, Seaside, OR 97138
503-738-3480

Tires LES SCHWAB
WARRENTON 861-3252
1167 S.E. MARLIN SEASIDE 738-9243
MCCALL TIRE CENTER 2155 S ROOSEVELT

Heather's COUNTRY HAVEN AFHS
503-325-2438
87943 Highway 202, Astoria, OR 97103

MOBERG & RUST ATTORNEYS AT LAW
842 BROADWAY STREET SEASIDE, OR 97138 (503) 739-6380

LOWER COLUMBIA CLINIC
FAMILY PRACTICE
Thomas S. Duncan, MD
Susan L. Skinner, CNM, CFPNP
595 18th, Astoria • 325-9131
Emergency Office Hours: 503-861-5515

MARTIN L ALVEY P.C.
Astoria office • 10 Pier One, Ste 303
Astoria, OR 97103
Phone: 503-325-5509 • Toll Free: 866-509-3516

Home Furnishings
1033 Commercial Street
Astoria, Oregon 97103
(503)325-5620

Morgan Civil Engineering
PO Box 358 • Manzanita
503-368-6186

MARITIME TEXACO
1701 Marine Dr
Astoria, OR 97103
1-503-325-7812

10 Pier 1 Ste. 308 | Astoria
503-741-3300
PORT OF ASTORIA

Classic BODYWORKS
503.325.0411
34747 Hwy 101 Bus.
Astoria
AND TOWING

LEWIS & CLARK OREGON TIMBER, LLC
Managed by the Campbell Group, LLC

RE/MAX River & Sea

TERRY'S PLUMBING
(503) 325-5180
2095 Marine Drive | Astoria

Pacific Sleep Program
Portland & Astoria | Setting the standard in sleep medicine for over 30 years
2120 Exchange St | Suite 302 | Astoria
503.325.3126

Teerin Bros. LAND & TIMBER CO.
ASTORIA | 503-556-0410

at The Hallmark Resort
ELEMENTS BY THE SEA
1400 S Hemlock, Cannon Beach, OR
503-436-0366

COLUMBIA RIVER BAR PILOTS
ESTABLISHED 1886
Providing safe passage since 1846

CLATSOP POWER EQUIPMENT INC.
34912 HWY. 101 BUSINESS
ASTORIA | (503) 325-0792

AstoriaPointe
263 W Exchange • Astoria | (877) 435-7790

Rosebriar
at Astoria Place