

Palette Puddlers hold annual Memorial Day art show, sale

CANNON BEACH — The Palette Puddlers' annual Memorial Day weekend art show and sale will be held at the Cannon Beach Chamber of Commerce from 10 a.m. to 5 p.m. Friday, Saturday and Sunday, May 22, 23 and 24; and from 10 a.m. to 3 p.m. Monday, May 25. Admission and refreshments are free.

Throughout the weekend, artist members of the Palette Puddlers will provide ongoing demonstrations of their particular art style. Visitors will be able to watch the artist and possibly find something "just created" to purchase.

The Palette Puddlers is a group of professional women artists, many of whom have

been painted together for years. Every Monday, rain or shine, they paint in a lovely Cannon Beach locale. During their weekly painting meetings they provide mutual support, critique artistic efforts and share the joy of creativity, as well as just have a great time.

Three times a year — Memorial Day, Labor Day and Stormy Weather Arts Festival weekends — the artists create an art gallery at the Cannon Beach Visitor Center to share and sell their original art works.

Members who will be showing and selling original works of art including watercolor, lino-block prints, acrylics, mixed-media, oils and



Submitted photo

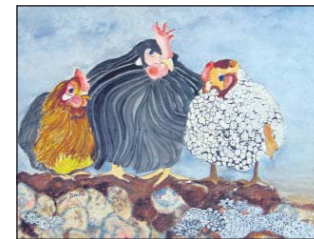
"Heron," an acrylic painting by Mary Anne Gantenbein.

Other items for sale include pastels are: Louise Birkenfeld, Susan Bish, Betty Brower, Sheila Brown, Patricia Button, Jeannette Gran-Davis, Judith Fredrikson, Mary Ann Gantenbein, Ireta Sitts Graube, Debbie Janssen, Suzanne King, Jo Pome-



Submitted photo

A pastel by Susan Thomas.



Submitted photo

"Viva La Difference," a mixed-media piece by Ellen Zimet.



Submitted photo

"Brambles," a watercolor by Judith Fredrikson.



Submitted photo

"Eggs in a Nest," a watercolor by Jo Pomeroy-Crockett.

roy-Crockett, Susan Thomas and Ellen Zimet.

Other items for sale include cards, print reproductions, and unframed paintings at a minimal price in the Bargain Bin. Many of these artists show their work in other venues in the Northwest and their paintings adorn the homes throughout the state and the country. The group's yearly calendar has been an immediate sell-

out. These calendars will be available by the Labor Day art show and reservations are being taken.

Most of the Palette Puddlers display their work at the Trail's End Arts Association in Gearhart. To see a specific artist's work, go to www.trailsendart.org

The Cannon Beach Chamber of Commerce is located at 207 N. Spruce St.

'The Sleeping Beauty' extends stage run

ASOC Teen Theatre musical held over for two performances

ASTORIA — The Astor Street Opry Company Teen Theatre Troupe's current production of "The Sleeping Beauty" has been held over for two more performances at 7 p.m. Friday and Saturday, May 22 and 23.

Sponsored by CMH Pediatrics, T & C Furnishings, HIP-FiSHmonthly, RiversZen Yoga and Resistance Stretching Studio, and The Arc Arcade, "The Sleeping Beauty" features fun

and zany songs brought to life through bright and charming characters, including Chester the Jester, Topsy the Gypsy, the inept Royal Magician, the evil Thornberry, Princess Elaine and Prince Dauntless.

Produced by ASOC Teen Theatre Troupe, this program is designed to build youth leadership skills through the learning and practice of theater process with guidance by

ASOC performance artists, as the teens take on all aspects of mounting a live show.

"The Sleeping Beauty" is directed by Bill Carr with music direction by Dena Tuveng and production management by Steven Nice.

Tickets are \$11 for adults and \$7 for children, military and seniors. Call 503-325-6104 or visit www.astorstree-toprycompany.com

Premier Purveyors of ONLY THE FINEST BOUTIQUE CANNABIS
Mr. Doobees only stocks PURE HAPPINESS

BOAT LOADS OF BUDS HAVE ARRIVED!

Mr. DOOBEE'S
Natural High Store

SUPER SPECIALS ON ALL KUSH PRODUCTS ALL WEEK LONG 5/21-5/27 ASK FOR RECORD BREAKING AK-47 AT 31% THC
Mention this ad & receive discounts on all KUSH Products. The more you buy the more you save BIG! Try a mix of all KUSH PRODUCTS

OPEN DAILY summer hours: 10^{AM} - 8^{PM}
mrdoobees@gmail.com
360-875-8016

On Hwy 101 between Raymond & South Bend
2870 Ocean Ave Raymond WA 98577
(across from the small cement plant)

Facebook | Twitter | Leafly

This product has intoxicating effects and may be habit forming. Marijuana can impair concentration, coordination and judgment. Do not operate a vehicle or machinery under the influence of this drug. There may be health risks associated with consumption of this product. For use only by adults twenty-one and older. Keep out of reach of children.

CELEBRATING VETERANS
CELEBRATING FREEDOM

MEMORIAL DAY

Weekend

Follow the Old Soldiers Trail and learn the story of Fort Stevens the Defender at the River of the West.

Raffle tickets will be sold for the chance to help fire Civil War cannons.

FORT STEVENS STATE PARK HISTORIC AREA
SATURDAY & SUNDAY,
MAY 23 & 24 • 11AM-4PM
PARK HOURS 8AM-6PM

How do I get there? The Fort Stevens Historic Area entrance is approximately one mile north of the Fort Stevens State Park camping entrance on Ridge Road. Head west at the 4-way stop.

FRIENDS OF OLD FORT STEVENS, INC.
503-861-1470
Ft. Stevens State Park, Hammond, OR
email: foofs@teleport.com Click on: www.visitfortstevens.com