

ARTPORT GALLERY

A new cooperative gallery opens at the Port of Ilwaco, offering a mix of local fine art and the opportunity for community education

Story by DWIGHT CASWELL

“This is a small pond, and there are a lot of artists in our midst,” says artist Rebecca Read, speaking of Washington’s Long Beach Peninsula. There aren’t many art galleries in the area, though, which means there is room for one more. Enter the new ArtPort Gallery, which opened May 2.

Read is one of 11 artists participating in the cooperative gallery. The idea originated with Ilwaco artist Marie Powell, who had seen successful “pop-up” galleries on her annual trip to New Zealand. She suggested to her friend Penny Treat, a Long Beach painter, that the idea might work in Ilwaco.

Treat is something of a community organizer, with extensive involvement in nonprofit organizations, and as she and Powell began talking to other artists, the gallery concept soon moved beyond the pop-up stage. ArtPort was born, and a collective of artists began to coalesce around the idea and the location.

“Recruiting the artists happened organically,” Read says. “We wanted a good mix with a blend of styles and media, both two-dimensional and three-dimensional.” They wanted diversity, and they wanted artists to grow in their art through the sharing of each other’s knowledge and experience.

The result is that at ArtPort you will find paintings, jewelry, pottery, calligraphy, and prints by experienced practicing artists. There are also things you won’t find. “We’re a fine art gallery,” says Treat, explaining the absence of “craft” items and photographs.

Seaview, Washington potter David Campiche says he was attracted to the group by the, “communal nature of the gallery, friends sharing the responsibility and making the economic equation more viable.” It is also, he says, “fun to exhibit with friends you know and respect in a quiet and uncluttered space. You feel part of a family.”



Photo by Laurie Anderson

The ArtPort Gallery artists are, from left, back row, Diane Lane, Martha Lee, John Clark, David Campiche, Liz Todd, Kristin Shauck, Rebecca Read, Sandra Hill; and front row, Penny Treat and Anna Lee Larimore. (Sonja May not pictured)

ArtPort is in the process of becoming a nonprofit organization, and as a part of that process its artists have developed a mission statement that goes far beyond the exhibition of art. ArtPort intends to “support the art and culture of the region” not only through the operation of the gallery, but also by connecting “the community with artists and the visual arts through a variety of artistic and educational opportunities.”

This means that community outreach is part of the ArtPort agenda, and the gallery will sponsor work-

shops, Read says, “by members and guests artists for people who want to know more about art and art as a business.” There will also be youth development activities and guest speakers to support the professional development of artists.

“We want to be part of Ilwaco’s business community, and we will be building partnerships with other businesses,” Read says.

As an example of such partnerships she points to Envision Ilwaco, a group of citizens who sponsored a day to

“spruce up” Ilwaco in March, including artists painting two murals on the old Oddfellows Building. Read also looks to a less competitive and more cooperative business paradigm, quoting the aphorism, “a rising tide floats all boats.”

The ArtPort artists didn’t have far to look to find a location for the gallery. There was a large space available next to Marie Powell’s Ilwaco gallery. It looked out on the Port of Ilwaco, and with artist Don Nisbett’s gallery a few doors down, the addition of a

Meet the ArtPort artists

- David Campiche – potter
- John Clark – printmaker, glass artist
- Diane Lane – jeweler
- Anna Lee Larimore – painter
- Martha Lee – painter
- Sandra Lill – jeweler
- Sonja May – painter
- Rebecca Read – printmaker, calligrapher
- Kristin Shauck – painter
- Liz Todd – painter
- Penny Treat – painter, printmaker

ArtPort Gallery

177 Howerton Way S.E., Ilwaco, Washington

Hours: 11 a.m. to 5 p.m. Tuesday to Sunday

Follow ArtPort Gallery on Facebook

To find out how you or your organization can become a partner in the arts, contact Diane Lane, outreach coordinator, at 360-244-5158



Photo by Dwight Caswell

“Tea Pot with Crow” by David Campiche, a Long Beach Peninsula-based ceramic artist.



Photo by Laurie Anderson

A visitor looks at the different styles and mediums of art on display at the ArtPort Gallery in Ilwaco, Washington, during its grand opening on May 2.

“Recruiting the artists happened organically. We wanted a good mix with a blend of styles and media, both two-dimensional and three-dimensional.”



Photos by Dwight Caswell

ABOVE: “Green Sweatergirl” by Sonja May, an ArtPort Gallery artist. LEFT: “Horizon II” by Anna Lee Larimore, an ArtPort Gallery artist.



Photo by Dwight Caswell

“Lotus Eater” by John Clark, an ArtPort Gallery artist.



Photo by Dwight Caswell

“Cobalt and Roses” by Liz Todd, an ArtPort Gallery artist.

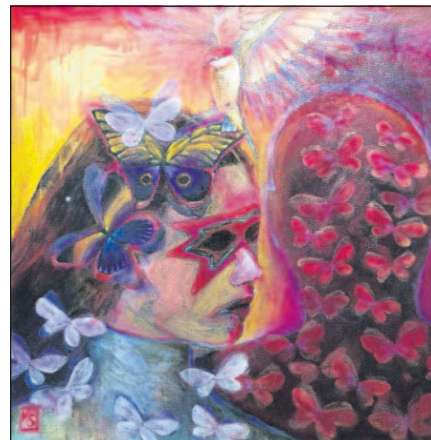


Photo by Dwight Caswell

“Benji Wa Yum” (All Things are Merely Dreams) by Kristin Shauck, an ArtPort Gallery artist.