

Kid Scoop

THE AWARD-WINNING PRINT & ONLINE FAMILY FEATURE



Living room car wash?

Would you let someone wash their car in your living room? Imagine what a mess that would make!

Would you drive your car into a creek and wash it in the middle of the creek? Hopefully not! That would make the creek dirty for the fish and animals and could cause them to get sick and die.

Clean Cars = Dirty Creeks?

If your family washes your car on the street or in a driveway and the water runs into the gutter and the storm drain, then all of the dirt, oil and pollutants hitch a ride in the rinse water and go into your local creek.

It's like washing your car in the fish's living room!



(Almost) Waterless Car Wash

Here's a way to wash your car with very little water.

You will need:

- ½ cup vinegar
- ½ teaspoon natural liquid soap
- 2 cups of water
- spray bottle
- clean rag
- soft cloth for buffing

Put the liquid ingredients in the spray bottle and shake to mix. Spray a small area of your car with the liquid and wipe, removing the dirt and grime. For stubborn dirt, allow the liquid to sit for a few minutes before wiping off or use a non-abrasive kitchen scrub cloth. Use a soft cloth to buff the area to a shine.

Source: www.OrganicGardening.com

For a clean car and clean creeks, try one of these:

1. Wash your car at a carwash that recycles water.
2. Wash your car on an unpaved area so that the rinse water soaks into the ground. The soil, gravel and vegetation filters the soap and grime.
3. Mix up a bottle of the Almost Waterless Car Wash solution following the directions on this page.

Do the math to discover which is the best way to wash your car:

Commercial drive-through car wash:

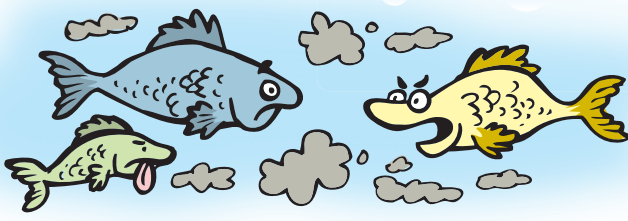
_____ to _____ gallons
41 - 6 25 + 25

Self-Service car wash:

5 + 5 + 5

Washing your car at home:

100 - 20 70 + 70



"Well, dinner is cancelled. Someone washed a car in our dining room!"

Standards Link: Reading Comprehension: Use the skills and strategies of the reading process to follow written directions. Math: Compute written amounts.

A Colorful Reminder

You can make every day Earth Day by being careful not to waste our natural resources.

Color this reminder and display it in a kitchen or bathroom as a reminder for your family.

NEVER WASTE WATER!

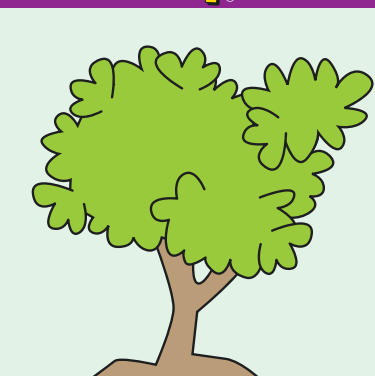
Extra! Extra!

Just the Facts

Look through the newspaper for articles about the environment. Find at least three facts about the environment in the articles. Write a paragraph using these three facts.

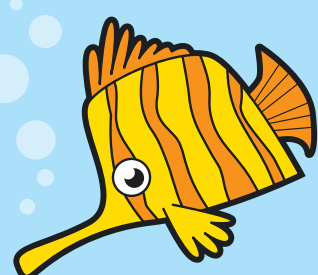
Standards Link: Research: Use the newspaper to locate information.

Kid Scoop Puzzler



This tree is 552 inches tall. There are 12 inches in a foot. How many feet tall is the tree?

_____ feet



This fish lives 4 fathoms below the surface of the ocean. There are 6 feet in a fathom. In feet, how deep in the sea would you have to go to find this fish?

_____ feet

Standards Link: Math: Problem solving.

Double Double Word Search

- WATERLESS
- VINEGAR
- FILTERS
- LIQUID
- DIRTY
- GRIME
- SPRAY
- STORM
- SCRUB
- SHINE
- SOAKS
- SOAP
- SOIL
- RIDE
- OIL

Find the words in the puzzle. Then look for each word in this week's Kid Scoop stories and activities.

L I V V I B U R C S
N L I O Y A R P S R
G R N O G O M E T E
C A E R S R L R O T
D L G K W R I A R L
S I A S E D Q M M I
H O R T E S U O E F
S S A T S H I N E L
U W T P Y I D O N S

Standards Link: Letter sequencing. Recognized identical words. Skim and scan reading. Recall spelling patterns.

FROM THE Kid Scoop LESSON LIBRARY

Earth News Chart

Make a chart and divide it into four columns labeled: *Threats to the Environment*, *Natural Resources*, *Ways to Save Energy*, *Items to Recycle*. Find relevant newspaper articles to paste into each column for one month.

Standards Link: Research: Use the newspaper to locate information.



Where do cars swim?

ANSWER: In the carpool lane.

NEWSPAPER CARRIERS NEEDED The Daily Astorian has several routes available in the Astoria area. Call 503-325-3211 for more information.

Thanks to the following businesses for supporting Newspapers In Education
www.dailyastorian.com/site/newspapers_in_education/

- Appelo Archives Center
- Sam's Seaside Café
- Hees Enterprises, Inc
- Quackenbush Builders Inc.
- U Street Pub & Eatery
- Bridgewater Bistro
- Clatsop Truck & Equipment
- Clatsop Behavioral Healthcare
- Le's Income Tax
- Kuuma Saavi Works
- Sunset Presort
- Bergerson Construction
- Diane Barendse, CPA
- Lazerquick Seaside/Astoria
- Mark J. Lang, Attorney at Law
- Premium Adjustable Beds
- Suzanne Elise Assisted Living
- Solum Roofing & Gutters
- Astoria Marine Construction
- Jonathon's LTD
- Seaside Oregon Visitors Bureau

Great Ocean
Da Yang Seafoods LTD.

EMERALD HEIGHTS APARTMENTS
Affordable Place to Call Home
Astoria, OR Call 325-8221 for more information

Astoria Forest Products, LLC
10 Pier 1 • Suite 301
Astoria, Oregon 97103

KOA Astoria, Warrenton, & Seaside
1100 Northwest Ridge Road
Hammond OR 97121
reservations 800-562-8506
info 503-861-2606

Northwest West Inc. Income Tax Preparation
762 Avenue G, Seaside, OR 97138
503-738-3480

Tires LES SCHWAB WARRENTON 861-3252
1167 S.E. MARLIN SEASIDE 738-9243
McCALL TIRE CENTER 2155 S ROOSEVELT

Heather's COUNTRY HAVEN AFHS
503-325-2438
87943 Highway 202, Astoria, OR 97103

MOBERG & RUST ATTORNEYS AT LAW
842 BROADWAY STREET SEASIDE, OR 97138 (503) 738-6380

LOWER COLUMBIA CLINIC FAMILY PRACTICE
Thomas S. Duncan, MD
Susan L. Skinner, CHM, CHFP
595 18th, Astoria • 325-9131
Emergency Office Hours: 503-861-5515

MARTIN L ALVEY P.C.
Astoria office • 10 Pier One, Ste 303
Astoria, OR 97103
Phone: 503-325-5509 • Toll Free: 866-509-3516

Home Furnishings
1033 Commercial Street
Astoria, Oregon 97103
(503)325-5620

Morgan Civil Engineering
PO Box 358 • Manzanita
503-368-6186

NU-WAY CARPET CLEANING
3925 Abbey Ln. Suite 100
Astoria 503-338-5592

PORT OF ASTORIA
10 Pier 1 Ste. 308 | Astoria
503-741-3300

Classic BODYWORKS AND TOWING
503.325.0411
34747 Hwy 101 Bus. Astoria

LEWIS & CLARK OREGON TIMBER, LLC
Managed by the Campbell Group, LLC

RE/MAX River & Sea

TERRY'S PLUMBING
(503) 325-5180
2095 Marine Drive | Astoria

Pacific Sleep Program
Portland & Astoria | Setting the standard in sleep medicine for over 30 years
2120 Exchange St | Suite 302 | Astoria
503.325.3126

Twin Bros. LAND & TIMBER CO.
ASTORIA | 503-556-0410

ELEMENTS BY THE SEA
at The Hallmark Resort
1400 S Hemlock, Cannon Beach, OR
503-436-0366

COLUMBIA RIVER BAR PILOTS
ESTABLISHED 1846
Providing safe passage since 1846

CLATSOP POWER EQUIPMENT INC.
34912 HWY. 101 BUSINESS
ASTORIA | (503) 325-0792

AstoriaPointe
263 W Exchange • Astoria | (877) 435-7790

Rosebriar
at Astoria Pointe