

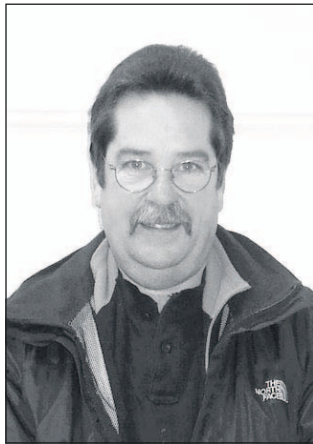
Early settler led colorful life

Learn some local history at upcoming lecture

ILWACO, Wash. — Have you ever wondered who's buried in the lonely little cemetery west of Highway 103, just north of Long Beach, Washington? Wander up the grassy knoll to the white picket fence and you'll find two gravestones, a husband and wife.

The inscriptions are worn but clear: "John Briscoe, born in Newtowne, Conn. Aug. 15, 1812. Died May 9, 1901" and "Lucy A. Briscoe, wife of John Briscoe, Who Passed from Earth to Heaven Oct. 24, 1881." Who were these early settlers of the Long Beach Peninsula? What story do their lives play in our local history?

Local historian Michael Lemeshko asked himself these questions, and his interest led him to the Columbia Pacific Heritage Museum and the Community Historian Project. The research



Submitted photo
Michael Lemeshko will give a lecture about John Briscoe, a colorful early settler of the Long Beach Peninsula, April 11.

skills he gained through the Project led him deeper into the Briscoe family and the emerging story of the cantankerous farmer John Briscoe. A colorful figure both as the fifth representative for Pacific County to the Washington



Submitted photo

John Briscoe, seated, was an early settler of the Long Beach Peninsula whose legal wrangling and "feuds" with developers and landowners were well known.

Territorial Legislature and as a probate judge, Briscoe's "feuds" with developers and landowners were many, and his legal wrangling was well known.

Briscoe's legal dealings with the Ilwaco Railway and



Submitted photo courtesy of the Columbia Pacific Heritage Museum

Pictured is the first train to Long Beach, part of the Ilwaco Railway and Navigation Co. Learn about early settler John Briscoe's dealings with the rail company during "The Cantankerous Farmer versus the Ilwaco Railway and Navigation Company," a talk by local historian Michael Lemeshko on April 11.

Navigation Co. are one chapter in the colorful life of this early settler and the subject of Michael Lemeshko's lecture at 2 p.m. Saturday, April 11 at the Columbia Pacific Heritage Museum's Annual Meeting. The lecture, entitled "The Cantankerous Farmer versus the Ilwaco Railway and Navigation Company" is free and open to the public. The Columbia Pacific Heritage Museum is located at 115 SE Lake St.

'The Cantankerous Farmer versus the Ilwaco Railway and Navigation Company'

2 p.m. Saturday, April 11

Columbia Pacific Heritage Museum

115 S.E. Lake St., Ilwaco, Wash.

Free

WILL THE CIRCLE BE UNBROKEN

A Tribute to the Carter Family

Featuring **John McEuen & John Carter Cash**

Saturday, April 18, 7:30 pm Tickets: \$30 - \$35



John
Carter
Cash

BREW IT ON, LAUGH IT OFF!

Final 3rd Fridays adds stand up to the Micro Brew

mix Seattle Stand-up Diva Susan Jones and

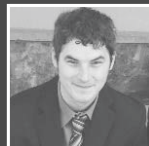
Opener Travis Nelson. Local micro brews

and wines in the lobby at 5:30 pm,

show: 7:00 pm Tickets: \$15



Susan
Jones



Travis
Nelson

COLUMBIA THEATRE
LONGVIEW • WASHINGTON

TICKETS 360.575.8499 • 888.575.8499 • WWW.COLUMBIATHEATRE.COM

Timebank for wellness

CCC offers healthy living workshops

ASTORIA and SEASIDE — Timebanking? The term's becoming familiar and sounds a bit like another name for "sharing." Coming up April 18 and 25 are two chances to find out what it is and how it can help make you healthier.

Clatsop Community College and the Lower Columbia TimeBank offer "TimeBanking for Wellness," a Saturday workshop from 10 a.m. to 4 p.m. The class will be offered twice: in Astoria on April 18 and in Seaside on April 25.

Wellness is an active process of gaining awareness and making healthy choices.

Timebanking is a way of giving and receiving while building supportive networks and strong communities. Wellness and timebanking join to create a pathway to healthier living using networking, not money. This one-day workshop includes a panel with health care professionals, instruction in basic self-health screenings, access to free resources, quick and healthy recipes and more.

Lower Columbia TimeBank members will present information and lead activities. It's a great chance to learn about timebanking and sign up, learn about local activities and resources.

Leslie Morgan, certified health coach, will be facilitating.

Class will include a potluck lunch and foods discussion. Participants should bring a dish to share or a sack lunch. Snacks will be provided.

On April 18, the class will be held on the Astoria campus of Clatsop Community College in Towler Hall, Room 310. On April 25, class will be held at the CCC South County Campus, located at 1455 N. Roosevelt Drive.

The class is free and open to everyone. For more information, email Morgan at leslie_mor@msn.com. To sign up, contact Mary Kemhus-Fryling, community education coordinator for the college, at mfrlyng@clatsopcc.edu or 503-338-2408.