

Kid Scoop®

THE AWARD-WINNING PRINT & ONLINE FAMILY FEATURE



© 2015 by Vicki Whiting, Editor Jeff Schinkel, Graphics Vol. 31, No. 6

EMERALD HEIGHTS APARTMENTS
Affordable Place to Call Home
Astoria, OR Call 325-8221 for more information

Murphy Overseas LTD
5319 SW Westgate Dr Ste 211
Portland, OR 97221
503-297-6246

KOA Astoria, Warrenton, & Seaside
1100 Northwest Ridge Road
Hammond OR 97121
reservations 800-562-8506
Info 503-861-2606

Northwest West Inc. Income Tax Preparation
762 Avenue G, Seaside, OR 97138
503-738-3480

Tires LES SCHWAB WARRENTON
861-3252
1167 S.E. MARLIN SEASIDE
738-9243
McCALL TIRE CENTER 2155 S ROOSEVELT

Heather's COUNTRY HAVEN AFHS
503-325-2438
87943 Highway 202, Astoria, OR 97103

MOBERG & RUST ATTORNEY AT LAW
842 BROADWAY STREET SEASIDE, OR 97138
(503) 738-6380

LOWER COLUMBIA CLINIC FAMILY PRACTICE
Thomas S. Duncan, MD
Susan L. Skinner, CHM, CHFP
595 18th, Astoria • 325-9131
Emergency Office Hours: 503-861-5515

MARTIN L ALVEY P.C.
Astoria office • 10 Pier One, Ste 303
Astoria, OR 97103
Phone: 503-325-5509 • Toll Free: 866-509-3516

Home Furnishings
1033 Commercial Street
Astoria, Oregon 97103
(503)325-5620

Morgan Civil Engineering
PO Box 358 • Manzanita
503-368-6186

NU-WAY 3925 Abbey Ln. Suite 100 Astoria
503-338-5592
CARPET CLEANING

10 Pier 1 Ste. 308 | Astoria
503-741-3300
PORT OF ASTORIA

Classic BODYWORKS 503.325.0411
34747 Hwy 101 Bus. Astoria
AND TOWING

LEWIS & CLARK TIMBER CO.
Managed by the Campbell Group

RE/MAX River & Sea

TERRY'S PLUMBING (503) 325-5180
2095 Marine Drive | Astoria

Pacific Sleep Program Portland & Astoria | Setting the standard in sleep medicine for over 30 years
2120 Exchange St | Suite 302 | Astoria
503.325.3126

Twin Bros. LAND & TIMBER CO.
ASTORIA | 503-556-0410

at The Hallmark Resort
ELEMENTS BY THE SEA 1400 S Hemlock, Cannon Beach, OR
503-436-0366

COLUMBIA RIVER BAR PILOTS
ESTABLISHED 1846
Providing safe passage since 1846

CLATSOP POWER EQUIPMENT INC.
34912 HWY. 101 BUSINESS
ASTORIA | (503) 325-0792

AstoriaPointe 263 W Exchange • Astoria | (877) 435-7790
Rosebriar at Astoria Pointe

Gentle Giants in Danger



In shallow salty waters and rivers, a large, slow-moving creature swims and grazes. It is called a manatee. A shy and very gentle herbivore, it is completely harmless.

For almost 50 million years, manatees have grazed the earth's tropical lagoons, rivers and bays. In Florida alone, there were once thousands of manatees. But now there are less than 3,000 in Florida. They are in danger of becoming extinct.

Varooooom! All too often the people who like to go boating in these same waters ignore the *Caution* signs. Manatees get cut by the sharp propellers and many die from these run-ins.

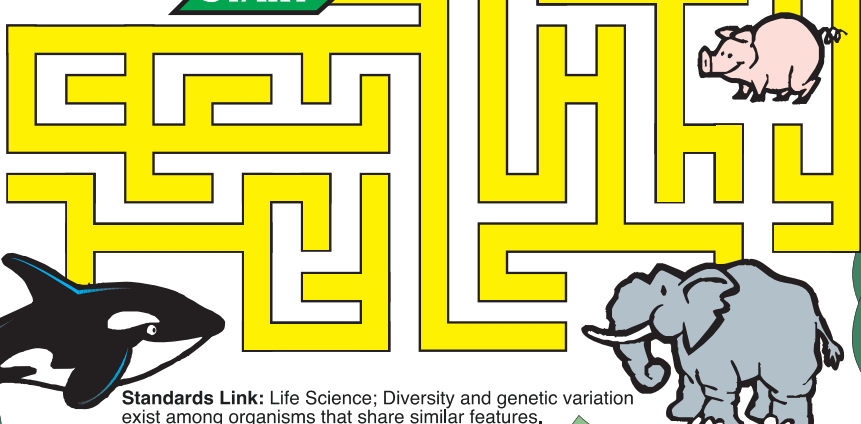
The warm, shallow waters where manatees live are disappearing or becoming polluted. This loss of habitat is another reason manatees are endangered.

Standards Link: Life Science; Living things depend on one another and the environment for survival; the physical conditions of the environment can change and these changes can be detrimental.

What's That?

Manatees are mammals. To what animal is the manatee related? Complete the maze to discover the answer.

START



Standards Link: Life Science; Diversity and genetic variation exist among organisms that share similar features.

Worrisome Waters

When manatees accidentally eat trash left behind by humans, they can die. Help clean the lagoon by finding all of the things that don't belong.

Standards Link: Scientific methods; Sort objects by attributes.

The Mermaid Legend

Long ago, sailors told tales of lovely sea creatures called mermaids. When early European explorers first saw manatees, they thought they were mermaids. Christopher Columbus wrote in his log book that they were not as beautiful as he had thought they would be.

"They are not as beautiful as they are painted, to some extent they have a human appearance in the face."

Standards Link: Literary Analysis; Understand the origin and format of legends.

Find at least five differences between what Pirate Pete *thinks* he sees and what is *really* there.



Standards Link: Visual discrimination; Find similarities and differences in common objects.

Extra! Extra!

Manatee Math

Look through the newspaper for numbers that add up to the length and weight of manatee calves and adults.

Standards Link: Math; Compute sums.

FACE FACTS: When manatees greet each other they nuzzle each other on the face.

Manatee Facts

Manatees come up for air every 10 to 15 minutes. Adult manatees eat over 100 pounds of water plants each day.

Manatee calves are 3 feet (1 meter) long when they are born and weigh about 100 pounds. They grow to be about 8 feet-long and weigh about 1,000 pounds.

THE MANATEE SECRET CODE



Standards Link: Life Science; When the environment changes because of natural or man-made forces some animals struggle to survive or become extinct.

Double Double Word Search

- MANATEE
- GENTLE
- GIANTS
- DANGER
- MERMAIDS
- CALVES
- TRASH
- WARM
- WATERS
- SWIMS
- SALTY
- TEAM
- CLEAN
- FACE
- TALES

Find the words in the puzzle, then in this week's Kid Scoop stories and activities.



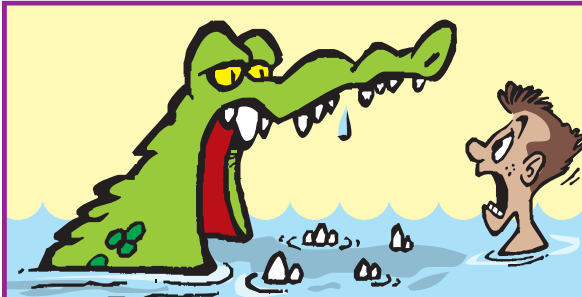
Standards Link: Letter sequencing. Recognizing identical words. Skim and scan reading. Recall spelling patterns.

FROM THE Kid Scoop LESSON LIBRARY

Animals in Sports

Look at the sports pages of your newspaper. How many teams are named for animals? Why do you think each team chose that animal name? If you were to name a team the Manatees, what kind of sport would they play?

Standards Link: Social science; Connecting current events to students' lives.



If you are swimming in the ocean and a big alligator attacks you, what should you do?

ANSWER: Nothing. There are no alligators in the ocean!

NEWSPAPER CARRIERS NEEDED The Daily Astorian has several routes available in the Astoria area. Call 503-325-3211 for more information.

Thanks to the following businesses for supporting Newspapers In Education
www.dailyastorian.com/site/newspapers_in_education/

- Appelo Archives Center
- Sam's Seaside Café
- Hees Enterprises, Inc
- Quackenbush Builders Inc.
- U Street Pub & Eatery
- Bridgewater Bistro
- Clatsop Truck & Equipment
- Clatsop Behavioral Healthcare
- Le's Income Tax
- Kuuma Saavi Works
- Sunset Presort
- Bergerson Construction
- Diane Barendse, CPA
- Lazerquick Seaside/Astoria
- Mark J. Lang, Attorney at Law
- Premium Adjustable Beds

- Suzanne Elise Assisted Living
- Solum Roofing & Gutters
- Astoria Marine Construction
- Jonathon's LTD
- Seaside Oregon Visitors Bureau

Great Ocean
Da Yang Seafoods LTD.

AstoriaPointe 263 W Exchange • Astoria | (877) 435-7790
Rosebriar at Astoria Pointe