

# SPORT DOPE

## FIRST CONTEST PLANNED NO DATES ARE BOOKED

### INITIAL GIRLS' GAME WILL BE NEXT WEEK

The first game of girls' basketball this season will be played Monday evening when the junior and senior girls' teams of Oregon City High school will clash on the floor of the school gymnasium.

The girls have been hard at work for several weeks under the direction of Miss Mabella Hunstock. The girls of the school have four teams: Sophomore, junior and senior teams and one representing the entire school. Several games have been arranged between the various teams within the school but it is probable that there will be no contests with outside organizations.

### CAMP CHOSEN

PORTLAND, Ore., Dec. 13.—Beavers at Santa Maria. Colts alternating between Chico and Santa Rosa.

These are the best bets for Portland's spring training camps, news of their practical selection being brought back last night by Manager Walter McCredie, of the Beavers, and Manager Nick Williams, of the Portland Colts. Both of the big fellows rolled in on the Shasta and neither is bulging with food for the fans.

### MATCH ARRANGED

LOS ANGELES, Dec. 13.—Leach Cross and Bud Anderson are matched today to furnish the New Year's fight card at McCarey's Vernon arena. The men will weigh 135 pounds two hours before the fight. Both will begin training tomorrow.

### CAPTAIN STANLEY TO SPEAK

Willamette, Ore., Dec. 13.—(Special)—Captain Stanley, "rapid fire orator" will speak Monday evening at the First Methodist church in this city. Mr. Stanley has appeared before several Clackamas county audiences, including Oregon City and Canby.

### POSTOFFICE ENLARGED

Molalla, Ore., Dec. 13.—(Special)—The work of enlarging the Molalla postoffice about 500 per cent has been completed. The interior of the building has been completely changed with the object of making the arrangement better for the handling of the mail. It is thought that there will be a greatly increased amount of mail matter since the opening of the new road.

### SPORTING BREVITIES

There is no much chance of the Seals getting Jimmy Johnston. Branch Rickley, St. Louis Brown's manager, is sweet on the "speed king," and has already made an offer to C. W. Murphy for the services of the player.

The Athletics were the only team in the big league that was able to score more runs in 1913 than in 1912. The world's champions scored 794 runs last season. Chicago led the National League with 721 scores.

It is almost a certainty that "Long Tom" Hughes, Washington pitcher, will be a member of the Angels next season. According to Hen Berry the deal is all cut and dried. Berry further states that he will get two more twirlers from the Nationals.

Henry Bebbly says that he is after Barker, a youncker, and Allan and Calvo, outlanders from the Washington club. Ellis and Krueger are not sure of their jobs and either or both may be looking for other jobs next season.

### For Public Orators.

Knowing whereof I discuss, I beg to admonish students of public speaking to avoid as far as possible the use of the following phrases: I rise with diffidence. Unaccustomed as I am to speak. By a happy stroke of fate. It becomes my painful duty. In the last analysis. I am encouraged to go on. I point with pride. On the other hand (with gesture). I hold. The vox populi. Be that as it may. May that as it be. I shall not detain you. As the hour is growing late. Believe me, Mabel. We view with alarm. As I was about to tell you. The happiest day of my life. It fails to my lot. I can say no more. In the fluff and bloom. I can only hint. I can say nothing. I cannot find words. The fact is. To my mind. I cannot sufficiently do justice. I fear. All I can say is. I shall not inflict a speech on you.—Washington Herald.

### Educating Father.

They're educating father. In the way to march the aisle. They've trained him to look solemn. And they will not let him smile. They've taught him how to hold his hands. And told him what to say. They're educating father. How to give the bride away. They nightly hold rehearsals. The wedding march they hum. With sister leaning on his arm. Downstairs they make him come. They've taught him at the altar. The place where he must stay. They're educating father. How to give the bride away. The wedding gown is finished. The caterer is hired. The florist's started on the job. And every one is tired. Now they're at the most important. Task before the wedding day.—They're educating father. How to give the bride away.—Detroit Free Press.

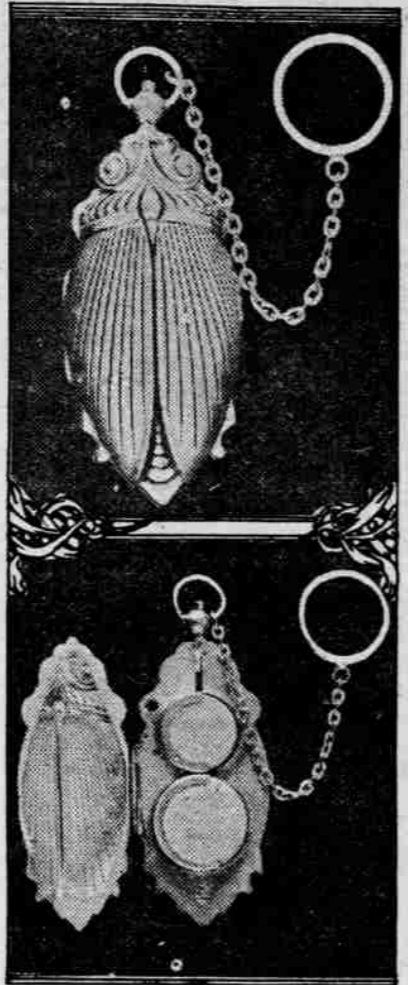
### The Vernacular.

"Hello! Thatchoo, Kit?" "Sure! Sil, ain't it?" "Betcherlifel! Whenja gitback?" "Smorning. Whenjoo?" "Lilwitilago. Javvagoodtime?" "Uh-huh." "Whereja gokit?" "Scosun. Wherejoo?" "Mishgun; jever go?" "Javvananyfun?" "Uh-huh. Lots. Wener you cumminover?" "Safnoon." "Srite! Well, slong." "Slong."—Chicago Tribune.

## Daily Christmas Hint

### Suitable Jewelry Gift For Mother

Jewelry that is useful and at the same time handsome is always an acceptable gift for mother. In these days, when antique and French jewelry is much in vogue, there are charming ornaments to be bought at reasonable prices which greatly delight the older



SCARAB COIN PURSE.

woman and add to the finish of her toilet.

The purse illustrated is a very up to date addition to a woman's jewelry case. The design is an Egyptian scarab carried out in antique silver.

Inside there are two compartments for nickels and dimes, and the beetle is attached to the finger with a chain ring.

## USE OF SLAG IN ROAD BUILDING

### Better Than Stone For the Macadam Highway.

### SPARE ROLLER, SPOIL ROAD

Plenty of Water Absolutely Necessary in Manufacture of Slag Roads—Slag is Cheaper, Lasts Better Under All Conditions and is Easier to Get.

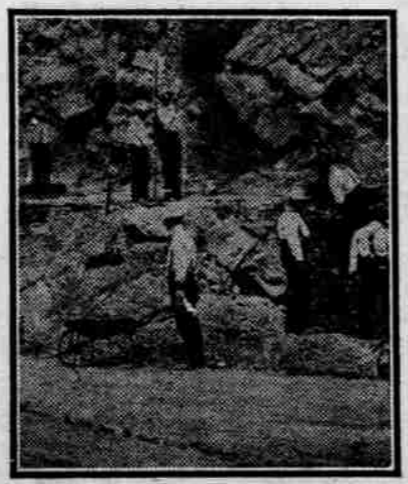
To construct a highway correctly proper excavation should first be made and the subbase thoroughly well rolled with a roller of at least ten tons in weight. This should be done no matter what kind of base material is used. However, in the construction of a slag road, in order to obtain the very best results, it is necessary that the loose slag be spread on the subbase to a proper depth and then thoroughly rolled from time to time as the work progresses.

During such procedure it is recommended that the road be kept well wet with water, if water is available, and in finishing it is only necessary to put on top of the slag base about two inches of slag screenings, which contain dust and slag particles as large as one-fourth of an inch, which, like all cement, is inert in the dry state.

This likewise should be thoroughly wet and well rolled. In fact, the top should never be put on except with plenty of water and thoroughly rolled. This is necessary because of the natural cementing qualities of slag, and in order to get it properly bound this material must be rolled to eliminate as many voids as possible.

A slag road built under these specifications, instead of deteriorating, as is too often the case with most other road materials, will gradually improve until the entire roadbed becomes a solid mass, thereby giving practically a concrete road.

It is sad indeed to watch road forces at work, not only along country highways, but more especially in the cities,



CUTTING SLAG FOR ROAD WORK.

where there are macadamized roads, for the waste of time and material is something appalling. Streets are repaired merely by throwing loose slag or some other material into the ruts and, instead of finishing the job by rolling and compacting the material, making it more or less permanent, the loose material is allowed

to remain, and vehicles passing over it, instead of compacting the filling, will cause the particles to grind into dust, which will be carried off either by the wind or by rapidly moving automobiles, leaving the street in as bad condition as before it was repaired.

Slag is the one material that not only is cheaper as a rule than all other road bases, but it is available in large quantities and at all times, regardless of the weather. The rainy season has no effect on the shipment of slag, as is the case in the rock quarries and gravel pits, and by reason of the fact that it is usually loaded at points where a number of railroads center cars are available when such is not the case at quarries and gravel pits located exclusively on one line.

The advantages to be derived from the use of slag in building highways may be analyzed as follows:

It is a natural cement rock.

It will cement together if properly compressed by wetting and rolling.

It is, as a rule, vastly cheaper than any other road material.

It is available in large quantities and at all times, regardless of weather conditions.

It is an impervious material.

It is considerably lighter in weight than stone or gravel, consequently a great saving in freight is effected where distances are equal.

A New Road Material.

A new road material designed to stand hard usage from automobiles is being tried by a Swiss engineer, W. Erlich, and is said to consist of a mixture of broken stone about the size of a hazelnut, but not limestone, with a binding material whose composition is not divulged by the inventor. In the present process the stone is heated at first from 100 to 150 degrees C. and mixed at this temperature with the melted composition. When in use the mass is remelted in order to put it on the road. A road roller heated to a rather high point is passed over the surface, the roller weighing about six tons. Reports state that a very good road surface can be obtained in this way.

Humanizing Houses.

Houses are curious things. We take a morsel of limitless space and wall it in and roof it over. Suddenly it ceases to be part of God's out of doors and becomes an entity with an atmosphere of its own. We warm it with our fires, we animate it with our affections, we furnish it with such things as seem good in our eyes. We do this to get shelter for our bodies, but we acquire as well an instrument for our spirits that reacts on us in its turn.

In other words, as we live our way into a house, adapting it to our need, the bricks and mortar, the paint and plaster, cease to be inert matter and become alive. Superficial sociologists have taunted women with being "more amiable or plantlike" than man, but I count it her second glory. The plant is an organism that "slowly turns lifeless into living matter," and this is the thing that woman has done from the beginning with her shelter. In our houses we achieve almost an organic extension of our very selves.—Cornelia A. P. Comer in Atlantic.

Oriolans as Food.

The ortolan, a bird smaller than our quail, an inhabitant of southern Europe in summer and of Africa in winter, is highly prized, especially among French epicures, for the delicate flavor of its flesh. The ortolan is netted alive, kept in a dark place and fed on millet, oats and other seeds until it becomes enormously fat, when it is killed for the table. This artificial fattening of the ortolan dates back to ancient days of Rome. A Parisian paper tells of a financier who invited four friends to a dinner at his country place and sent to Paris to a famous restaurateur to provide a feast for six persons. When the account was presented it footed up 1,200 francs—that is, \$240. "Outrageous!" said the financier. "Monsieur," said the restaurateur, "you have had twenty ortolans at 25 francs each. That alone is 500 francs." This would be much like paying \$5 each for well fattened English sparrows.

The Gates of Paradise.

Once in a year and at one place in the world there is a crush that surpasses anything else of its kind in the world. It is the great fair of Bawa Farid, which is annually held in the town of Pak Pattan, in British India. It is held in honor of the famous St. Farid ud Din, surnamed Shakar Ganj, or sugar store, from the fact that his body had become so pure by continual fasting that whatever was put into his mouth, even earth and stones, was instantly changed into sugar. The orn-

**"Surprise" KITCHEN SET**

**CONTAINS**

- Two Paring Knives with steel blades and waterproof handles
- One high grade Can Opener, tempered cutter

**(3 Pieces)**

**This Set is Yours**

If you send in a year's subscription to the OREGON CITY ENTERPRISE. It makes no difference whether it is yours or your neighbor's, or whether it is new or old. Send in the subscription and we will send you the set by return mail. We have only a limited number of these and the offer will close December 31 unless we run short before that time.

## OPTIMISTIC TONE HEARD IN MARKETS

Receipts for the week at Portland stock yards have been: Cattle 1656, calves 29, hogs 7402, sheep 3903.

An exceptionally good class of cattle were handled all week, the feature of the latter part of the week being a very large number of grass cattle from central Oregon. To steers went to 8 cents.

One of the largest days for receipts was Monday, when nearly 4000 head of hogs were unloaded. Notwithstanding, liquidation was prompt and tops, 1400 of them, went at 8 cents, which price remained standard for the week. Outlook steady.

Sheep continue strong, both as to numbers and price. Sales have been brisk. Outlook continues firm. The lamb market is very steady with an extreme price at \$6.25 for tops.

Livestock, Meats  
BEEF—(Live weight)—steers 7c;

That is a good idea, for the city to do more public improvement work in the winter season, when many men need employment.

MUTTON—Sheep 3 to 4c; lambs, 5 to 5½c.  
POULTRY—(buying)—Hens 12c; old roosters 9c; broilers 11c.  
SAUSAGE 15c lb.  
PORK—9c to 10 3-8c.  
VEAL—Calves 12 to 13c dressed, according to grade.

DUCKS—(Live)—13c; geese, 12c; APPLS—50c and \$1.  
DRIED FRUITS—(Buying)—Prunes on basis 4 for 35 to 40c.  
ONIONS—\$2.15 per sack.  
POTATOES—60 and 75c.  
BUTTER—(Buying)—Ordinary country butter 23c to 25c.

OATS—(buying)—\$23.50 and \$24.50 wheat 79c and 80c; oil meal selling \$38; Shady Brook feed \$1.30.  
EGGS—Oregon ranch, 35c.  
Prevailing Oregon City prices are as follows:

HIDES—buying—Green salted, 10c.  
CORN—Whole corn 33c; cracked \$37.  
SHEEP PELTS—75c to \$1.50 each.  
FLOUR—\$4.30 to \$5.

HAY—(buying)—Clover at \$8 and \$9; timothy \$13 and \$14; oat hay best \$10 and \$11; mixed \$9 to \$12; Idaho and eastern Oregon timothy selling \$20; valley timothy \$15 to \$16.  
FEED—(selling)—Shorts \$25.00; bran \$23.50; feed barley \$30 to \$31.

## Christmas Wines and Liquors AT HALF PRICE

All Wines ..... 65c Per Gal.  
All Mustangs ..... \$2.50 Per Gal.

### KENTUCKY LIQUOR CO.

Cor. 5th and Main Streets

## Christmas Suggestions for Her

- WARMER TOASTER
- FLAT IRON
- TABLE LAMP
- PERCOLATER
- CHAFING DISH
- CURLING IRON
- TABLE COOKER

All these and many other Electrical Appliances are on display at our Main St. Store. Help lighten her work by giving her one of the many labor saving electrical devices that we carry.

## Portland Railway, Light & Power Company

### THE ELECTRIC STORE

Beaver Building, Main Street  
Tel.—Home, A228 Pacific, Main 115