

\$950

f. o. b. Toledo

Overland
1914

\$950

f. o. b. Toledo

Electric head, side, dash and tail lights
Storage battery and ammeter
35 horsepower motor
114-inch wheelbase
Timken bearings
Splittorf magneto

35 horsepower.
Model R. Schebler carburetor
Three-quarter floating rear axle
33 x 4 Q. D. tires
Brewster green body with light green striping, nickel and aluminum trimmings

Cowl dash
Upholstery of genuine hand buffed leather
Mohair top and boot
Stewart speedometer
Electric horn
Flush U doors with disappearing hinges
Clear vision windshield

With Gray & Davis Electric Starter and Generator—\$1075.

**Bigger point for point
Better dollar for dollar**

THE 1914 Overland is the most wonderful car of the season. And the price is reduced again.

The motor is more powerful; the wheelbase is longer; the tonneau is larger; the equipment is more complete, better and costlier than ever. In every respect Overland value has been increased while the price has been decreased.

The manufacturers have turned their enormous facilities over to the building of this one model. In no other way could such value be secured.

The production has been increased to 50,000 cars. There is an even stricter practice of the well-known Overland manufacturing economies. And this means a greater car at less cost to you.

So finely drawn is the big 1914 Overland production plan, that 50,000 cars will be built; 10,000 men will be kept busy all the year 'round; every wheel of the \$4,000,000 worth of most modern machinery kept in constant operation, and never a moment's hesitation permitted in a plant that covers more than 100 acres of ground.

This is the way the Overland makes possible a \$1200 value for \$950.

Their great business is built on established standardized quality.

System is the watchword in the Overland factories—and you get the benefit.

We will soon have new Model 79 Overlands on our salesroom floor. We urge you to see this new model at once. Ride in the car; feel what a difference the big 114-inch wheelbase makes; note the car's entirely changed appearance. It is neater, prettier than ever—and that means the handsomest car of the year.

The long wheelbase gives increased riding comfort.

The improved Overland motor is rated at 35 horsepower—plenty of power to give satisfying comfort and speed. Inspect the many motor refinements which make power plant more flexible and accessible.

You will find a most efficient and reliable electric lighting system on the new Overland. This costly addition to equipment is worthy of a \$1500 car.

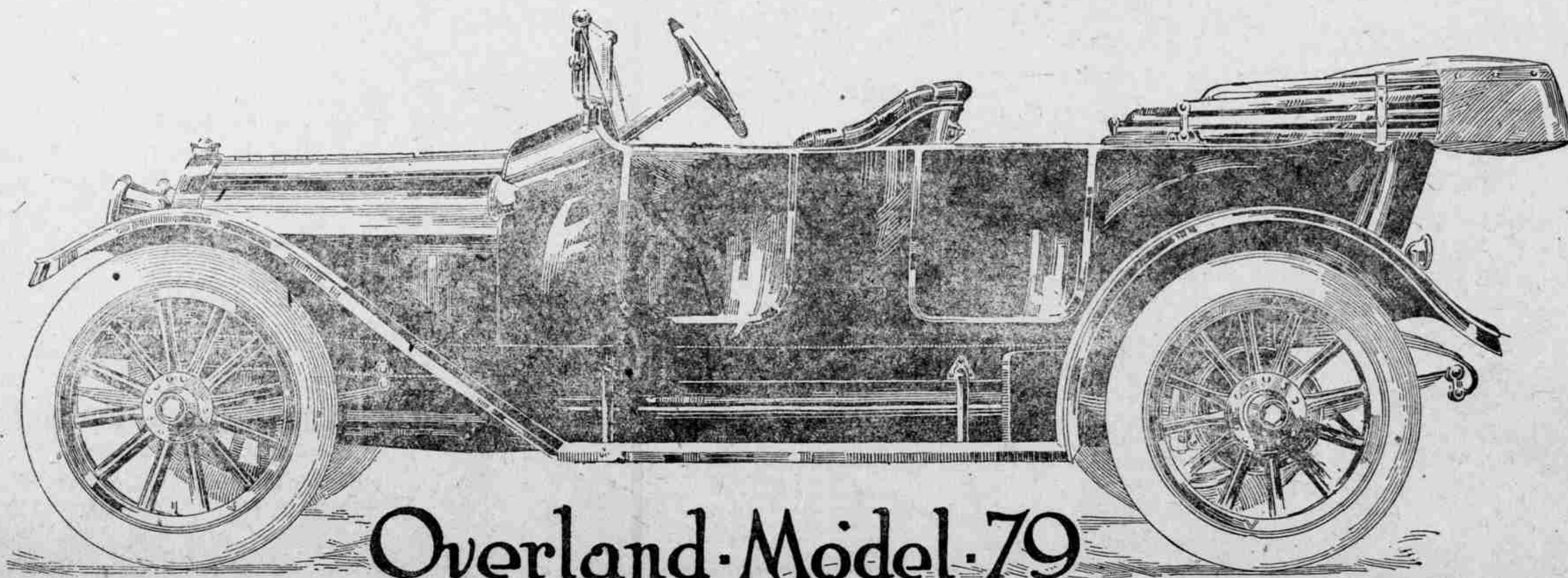
The new Overland body has a handsome finish—beautiful rich, dark Brewster green. The trimmings are of heavy nickel and aluminum. And the big graceful cowl dash gives to the car an appearance of dignity vainly sought in many other cars of higher price.

Examine the spacious tonneau; note the big, soft, deep and luxurious folds of upholstery. The new Overland is bigger and better; we can show you point for point where it is the best your money can buy.

MILLER, PARKER CO.

Oregon City, Oregon

Clackamas County Distributors



Overland Model 79