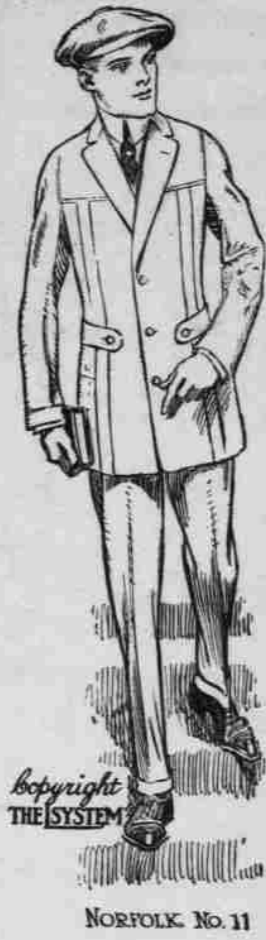


Look To Us For Stylish Wearables



We have just enlarged our store to almost double the former space, and have gathered together a comprehensive showing of the most representative wearing apparel obtainable. We invite your inspection of our mammoth stock, and also to look over the most modern Clothes Shop in the Willamette Valley.

Your Easter Suit

A Stein-Block, L System or Clothcraft. They are the best. \$12.50 to \$35

Your Easter Hat

Buy a Stetson or Willamette at \$3.00 to \$5.00.

EASTER FOOTWEAR in W. L. Douglas and Kneeland, \$3.50 to \$5

MANHATTAN or IDE SHIRTS None better at \$1.00 to \$4.00.

Say, Boys!

Bring your mothers, fathers, sisters or brothers to our new **BOYS' DEPARTMENT**

We feature the celebrated **Herculese Suit**; we want you to see it and have a

Nice Souvenir with every Suit

We will give Double S. & H. Stamps with every Boys' Suit sold in the next three weeks.



Price Bros.

Most Modern and Largest Clothes Shop in Willamette Valley

Sixth and Main Sts., Oregon City

ESTABLISHED 1895

We Give *J.S.H.* Green Stamps

Comparison

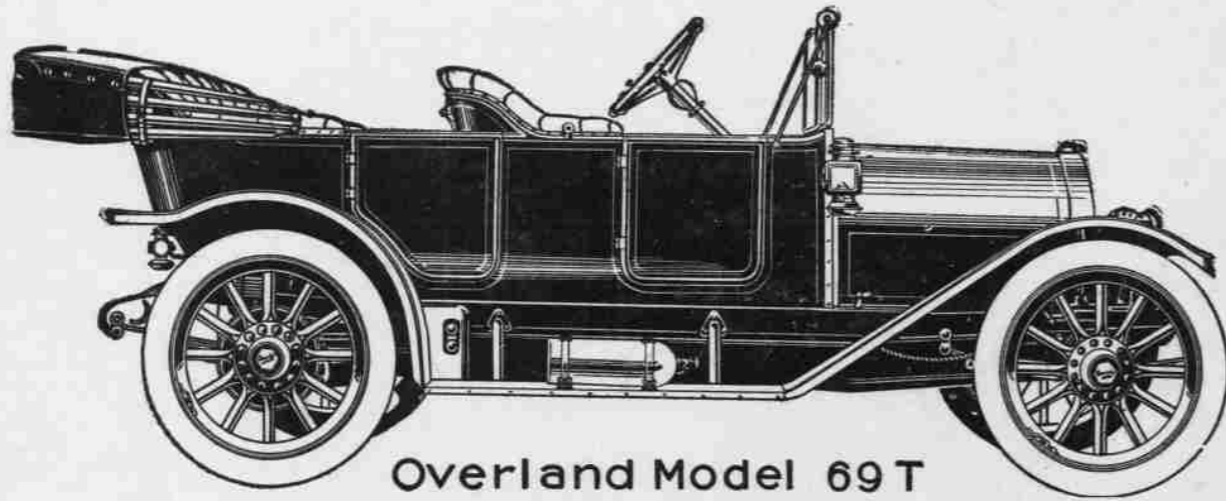
—is a very good way for you to make sure which is the best automobile for you to buy. The OVERLAND will stand inspection and comparison with any \$1400.00 car on the market. The very best place to compare cars is at the Portland Automobile Show in Portland this week. All the standard automobiles are shown there and every courtesy will be shown you if you attend and make yourself known at the OVERLAND exhibit.

Overland

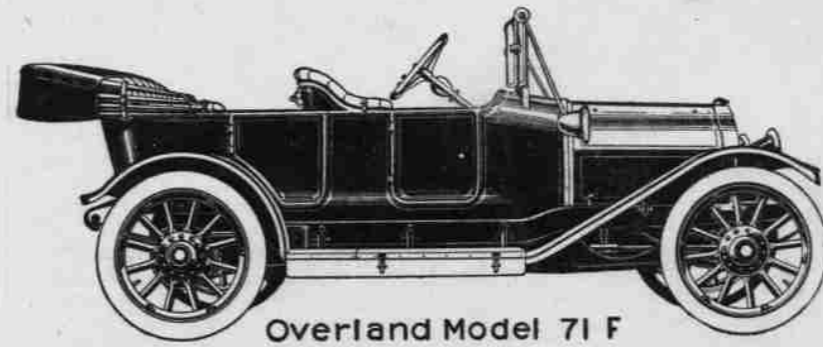
Service

HOW IS THE DEALER GOING TO CARE FOR ME? That's one of the questions you should ask yourself. How well or how poorly is he equipped to give me proper service? Overland dealers carry a stock of parts and replacements depending on the number of Overland cars running in the particular dealer's territory. That's part of the dealer's contract with the Willis-Overland Company, on which the company lays great stress.

PARTS ORDERS COME FIRST, ALL OTHER BUSINESS NEXT! STEP IN AND SEE FOR YOURSELF.



Overland Model 69-T



Overland Model 71-F

Overland Model 69-T

The perfection of a stylish, comfortable, fully equipped touring car finds its unsurpassable expression in the Overland Model 69-T. No amount of money could buy greater refinement or more successfully combined safety, luxurious ease, smooth running and ample power.

SPECIFICATIONS

Motor—Four cylinders, cast single and set off center; bore, 4 in.; stroke, 4½ in.; developing 30 horsepower actual at normal speed. Five-bearing crankshaft.
Cooling—Thermo-syphon or natural water cooling system—no pump.
Frame—Cold-rolled steel, hot-riveted.
Wheelbase—110 inches.
Tread—56 inches; for south, 60 inches.
Clutch—Cone, leather-faced.
Transmission—Selective, sliding-gear type, three speeds; center control; annular bearings.
Ignition—Magneto and battery with non-vibrating coil. Lubrication—Splash lubrication for main and connecting rod bearings. Pistons and timing gears lubricated by mechanical oil.
Brakes—New design; contracting and expanding on rear wheel hubs, quick-adjustable.

Springs—Semi-elliptic front, three-quarter-elliptic rear; six leaves, steel-bushing eyes.
Steering Gear—Worm and gear, adjustable; 16-inch steering wheel.
Front Axle—I-beam section, drop-forged in one heat, without welding; Timken bearings.
Rear Axle—Three-quarter floating; Hyatt bearings.
Wheels—Hickory; artillery pattern; 12 spokes; 12 bolts each wheel.
Tires—32x3½ in. front and rear; quick-detachable rims.
Finish—Overland blue, gray wheels, black hubs; nickel and aluminum trimmings.
Body—Five-passenger touring car. Metal.
Equipment—Acetylene engine-starter; gas tank; two gas lamps; three oil lamps; mohair top and top boot; windshield; speedometer; horn; robe rail; foot-rest; tire carriers in rear; etc.
Price—\$385, F. O. B. Toledo, Ohio.

Overland Model 71-F

For those who desire extreme luxury in a roomy four-passenger car. Very attractive in appearance, with graceful, snappy lines that are suggestive of speed. It rides as smoothly and noiselessly as the most costly cars built.

SPECIFICATIONS

Motor—Four cylinders, cast single and set off center; bore, 4 3/8 in.; stroke, 4½ in.; developing 45 horsepower actual at normal speed. Five-bearing crankshaft.
Cooling—Thermo-syphon or natural water cooling system—no pump.
Frame—Cold-rolled steel, hot-riveted.
Wheelbase—114 inches.
Tread—56 inches; for south, 60 inches.
Clutch—Cone, leather-faced.
Transmission—Selective, sliding-gear type, three speeds; center control; imported annular bearings.
Ignition—Magneto and storage battery kept charged by generator.
Lubrication—Splash, pump-circulated, with sight-feed on dash.
Brakes—New design; contracting and expanding on rear wheel hubs, quick-adjustable.

Springs—Semi-elliptic front, three-quarter-elliptic rear; seven leaves, bronze-bushing eyes.
Steering Gear—Worm and gear, adjustable; 18-inch steering wheel.
Front Axle—I-beam section, drop-forged in one heat, without welding; Timken bearings.
Rear Axle—Full-floating; Timken bearings.
Wheels—Hickory; artillery pattern; 12 spokes; 12 bolts each wheel.
Tires—34x4 in. front and rear; quick-detachable demountable rims.
Finish—Green with ivory stripe; nickel and aluminum trimmings.
Body—Four-passenger torpedo. Metal.
Equipment—Acetylene engine-starter; gas tank; dynamo; storage battery, electric head, side and tail lamps; ammeter; mohair top and top boot; windshield; speedometer; horn; robe rail; foot-rest; tire carriers in rear; extra demountable rim; etc.
Price—\$1,475, F. O. B. Toledo, Ohio.

SATISFACTION

MILLER-PARKER CO.
OREGON CITY, OREGON

GUARANTEED