

Morning Enterprise

WEEKLY ENTERPRISE ESTABLISHED 1866.

VOL. V.—No. 50.

OREGON CITY, OREGON, SATURDAY, MARCH 1, 1913.

PER WEEK, 10 CENTS

SOLONS SAY THERE IS MONEY TRUST

CONGRESSIONAL COMMITTEE HAS PLAN TO CHANGE FINANCIAL SCHEME

STOCK EXCHANGE TO BE CURBED

Board Admits It Is Impossible For Widely Distributed Wealth of Nation To Be Corralled

WASHINGTON, Feb. 28.—That a money trust does exist and that its powers should be curbed by stringent federal regulations as to the conduct of national banks, clearing houses and stock exchanges, were the findings of the House money trust committee set forth in the majority report of its investigations filed in the House late today.

The report, signed by Chairman Pujo and six other Democratic members, was accompanied by two bills, one to regulate stock exchanges through forbidding the mails to exchanges which do not comply with federal regulations, and the other to regulate clearing house associations through forbidding national banks to join such organizations unless federal regulations are observed.

On the question of the existence of a money trust, the report is specific and detailed.

"It would, of course, be absurd," said the report, "to suggest that control of the bulk of the widely distributed wealth of a great nation can be corralled by any set of men. If that is what is meant by gentlemen who deny the existence of a money trust, your committee agrees with them. It is not, however, necessary that a group of men shall control directly or indirectly the bulk of the funds of the smaller banks in New York, where a group of men have strengthened their interest in the various banking institutions.

"If, therefore, by a 'money trust' is meant an established and well-defined identity and community of interest between a few leaders of finance which has been created and held together by stock holdings, interlocking directorates and other forms of domination over banks, trust companies, railroads, public service and industrial corporations and which has resulted in a vast and growing concentration of the control of money and credit in the hands of a comparatively few men, your committee has no hesitation in asserting that the condition thus described exists in this country today," the report adds.

NEXT BOOSTER DAY TO SET NEW RECORD

Booster Day in Oregon City has been such a popular one in the past that it has been decided to have two Booster Days this year. They will be April 25 and 26. The promotion department of the Commercial Club, which has charge of the celebration, has decided to urge all commercial houses, lodges, etc., to participate. The parade the first day will be made up of floats of business houses and lodges. A stock and horse show will be held the same day. Milk will be tested for the benefit of farmers and premiums will be awarded. O. E. Frey, manager of the Publicity Department of the Commercial Club, announced Friday night that entries would be received only from Clackama County farmers. He said that the raisers of sheep and hogs were especially urged to have exhibits.

Wanted!
Girls and Women
To operate sewing machines in garment factory, Oregon City Woolen Mills.

Jas. Wilkinson Roy Baxter
WILKINSON & BAXTER
FLORISTS
Next door to Star Theatre Phone Main 271

EXPERT PRAISES OGLE GOLD MINE

SALEM MAN SAYS IT HAS BEST PROSPECT OF ANY PLACE IN STATE

ORE MORE THAN FIFTY FEET DEEP

Five Veins are Cut by Tunnel and Ore Carries More Than \$7 to Ton Through all Strata

Most Oregonians are skeptical about mines in the Cascade range, especially in the part of the range in this section of the state. Yet there is no reason why these big mountains should not carry mineral, and in fact they do. The reason so little of it has been found, is that the older country rocks, the mineral bearing formation, are, as a general thing, buried under a tremendous capping of basalt. Where the older country rocks, however, break through this crust, they almost always show mineral, says the Daily Capital Journal of Salem. This is the case up in the Gold Creek section, in Eastern Marion county, and it also proves true at Ogle Mountain, where the Ogle Mining Company is opening up a group of 22 claims. These mines are located partly in Marion County, and an immense amount of development work has been done. Discovered some dozen years ago by the Fairclough brothers, work has been prosecuted on them ever since. While this was necessarily slow, owing to the lack of means, yet the brothers were persistent, and they have, from all appearances, won out. They drove one tunnel about 700 feet, cutting the ledge at a depth of about 600 feet, and they found the vein, of good size, strong and evenly mineralized. The crops were in porphyry formation, and the surface ground below the outcrop all "panned" well. Near the surface some remarkably rich specimens filled with free gold were found, and in fact, this same character of "specimen ore" is found at all depths, though, of course, in small quantities.

After cutting the ledge in the first tunnel another was started at Ogle creek at the foot of the mountain, and was driven in 1450 feet, cutting the ledge at about 1200 feet and at a depth of about 1300 feet. In running this tunnel four blind ledges were cut, all running parallel to the main ledge, and probably will unite with it at a greater depth. These ledges were, taking them as encountered, 16 feet, 4 feet, 9 feet and 5 feet, respectively, and all showed ore of values identical with the main ledge. The latter, were cut on the lower tunnel, is fully 50 feet thick, and is in contact between the porphyry and a black diorite, a splendid mineral bearing formation. The main body of ore is low grade, running from \$3 to \$19 per ton, and samples taken at random from the ore car, worked by cyanide test, above \$7 per ton. The ore has been undercut, that is a drift has been run up the ledge quite a distance, and there is ore enough in sight to keep the cyaniding plant, which the company expects to install this year, running for ten years from the overhead stope now opened. This plant, once in operation, should easily produce \$700 a day for years to come. Not only this, but with the ledges cut at this great depth, showing their permanency, the amount they may be made to yield is only a question of the size of the plant for handling the ores. There is ore enough in sight, or certain, to keep a plant handling 1000 tons a day at work for years to come, and this would mean an output of \$7,000 a day. The ore carries, besides its \$7 a ton gold, from \$1.50 to \$2.00 a ton silver. Besides this immense body of low grade, the rich stringers following the walls and splitting through the ore body will greatly enhance the average value, though it is not taken into consideration at all in making estimates. The writer has had a good many years experience in the mines, and unhesitatingly pronounces the ore of fine character, bright and lively. Ogle Mountain, from all indications, is going to make the mining world sit up and take notice, and will put the Northern Cascade range on the mineral map.

Church Meeting Arranged.
The revival meetings in the Methodist Episcopal Church during the week have steadily gained in interest. The service Friday evening was the last for the week. There will be no service Saturday. Special preparation is being made for the Sunday services, and a great day is looked for. Dr. Ford will preach Sunday morning and will hold a mass meeting in the afternoon at 3 o'clock in the church. This will be under the auspices of the laymen. The pastor will speak. At 7:30 o'clock there will be a great service. George C. Brownell will speak on the subject, "What I Think of Christ," and Dr. Ford will follow with "What Will You Do With Jesus?" Special music is being arranged. Dr. Ford promises to make this one of the greatest meetings ever held in the city.

THE OUTLET

PERPETRATED BY WALT McDOUGALL



Prince Lichnowsky, German Ambassador at London, succeeding Baron Marschall von Bieberstein.

BROWNELL TO MAKE SPEECH ON SAVIOR

"What Do You Think of Christ?" will be the subject of an address by Hon. George C. Brownell, in the open forum of the Methodist Church tomorrow evening. The services will start at 7 o'clock. Dr. T. B. Ford, pastor of the church, will preach on "What Thou Will You Do With Jesus?" Mr. Brownell is expected to make a fine address as the subject is one which he has given serious study. Dr. Ford announces that the church doors will open at 7 o'clock and that all seats will be free. There will be special music by the choir, the men's chorus and the Children's Vested Choir. Dr. Ford will preach at 11 o'clock in the morning and a mass meeting will be held at 3 o'clock in the afternoon.

HUMANE SOCIETY DOING FINE WORK

Miss Anita McCarver, president of the Oregon City Humane Society, is doing a fine work. She has made the society one of the most humane organizations in the state. She asks the Enterprise to aid the organization in obtaining assistance. Adam Wilkinson, Humane Officer, reported Friday evening that he had been called to attend more decrepit horses than ever before. He said that five horses had died while hitched about three miles from Barton. Mr. Wilkinson reported that the horses had been mistreated. He said they had been clubbed to death.

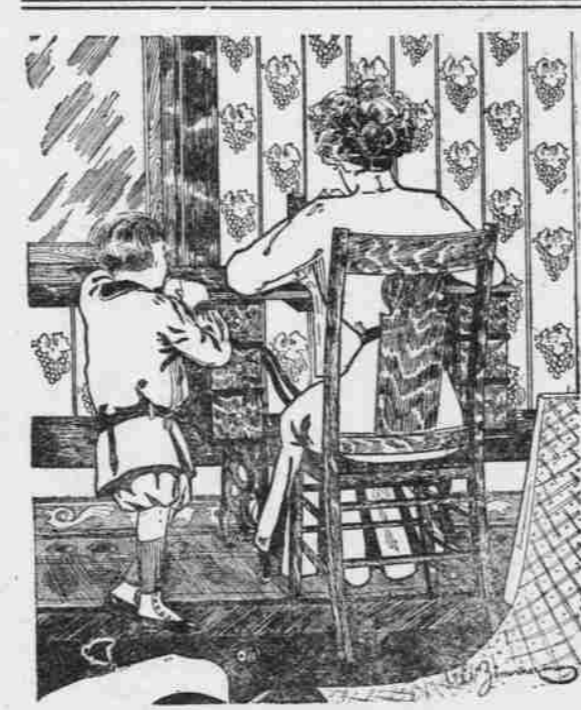
If you saw it in the Enterprise it's so.

RAILWAY LINE STARTED TWENTY YEARS AGO

The interurban electric line between this city and Portland was formally opened to the public 20 years ago today. When opened to traffic it was the longest interurban electric line in the world and was thoroughly equipped with all modern devices. It was known as the East Side Railroad Company, and was built and operated with Oregon capital. Although Oregon City has much more than doubled in population since the building of the road, and the population between this city and Portland has increased four-fold the service between this city and Portland, according to prominent men, has not kept pace with the growth of the community.

HEIRS OF W.O.W. MEMBER FILE SUIT

J. C. Armstrong, father of Rufus Armstrong, who died several days ago of typhoid fever, has filed suit, through Brownell & Stone, against Local Camp No. 148, Willamette Falls, Woodmen of the World, for \$500. The plaintiff alleges that Rufus Armstrong sent his application and signed his policy in the local lodge November 22. Immediately after he was stricken with typhoid fever and was unable to sign a receipt for the money he paid his dues. His lawyers, however, allege that the contract was consummated and his heirs are entitled to the \$500.



IN FACT THEY ARE HERE TO SERVE YOU RATHER THAN TO SELL YOU

Cut out this coupon
Double D. M. Stamps
All Day Today on all Purchases
Double Stamps given only when Coupon is presented.

HOME DRESSMAKING

The home dressmaker will find in our store all the essential accessories from a bolt of goods down to a bit of stay-tape or a patent button hole, and no matter whether your purchase be large or small our clerks are here to give you every possible advantage of their knowledge and assistance

LITTLE NOTIONS	LITTLE PRICES
Wilson's Patent Dress Hooks	5c
Kleiner's 50c Kimono Style Shields	25c
All sizes Snap Fasteners	2c
Dutch Linen Tape, regular	10c
Wickes Waist Button Hole Tape, bolt	10c
45 Yards Spool Darning Cotton	1c
Black and White Skirt Belting, yard	10c
10c sixty-inch Tape Measure	5c
50c Steel Skirt Gauge and Marker	25c
15c Dressmakers' Tracing Wheels	8c
All colors Ric Rac Braid, per bolt	10c
New Glass Trimming Buttons, card	10c
Dressmaker's Common Pins, per pkg	1c
Large size regular 10c Pearl Buttons	5c

AGENTS PICTORIAL REVIEW PATTERNS
Bannon & Co.
SELLS FOR LESS
MASONIC TEMPLE BLDG. OREGON CITY, ORE.
AGENTS PICTORIAL REVIEW PATTERNS

CANEMAH GIVES UP STREET R.R.

PORTLAND COMPANY AGREES TO FURNISH LIGHTS AND MAKE STREETS

TOWN TO GET FARE OF 20 CENTS

Tracks From Southern Pacific Crossing to Southern End of Municipality Will Be Removed

At a hearing before the State Railroad Commission Friday afternoon at the court house, the Portland Railway, Light & Power Company reached an agreement with Canemah on the proposition of relinquishing the company's franchise in that town. Many of the citizens of the town strenuously objected to the removal of the company's tracks south of the place where they cross the Southern Pacific tracks, but the company maintained that this portion of the track was not profitable to operate and that the tracks up to the Southern Pacific tracks would serve the people of the town as well and that by not crossing the Southern Pacific tracks much danger would be averted.

At a recess during the hearing a committee of Canemah residents and officials of the company agreed upon a compromise. In exchange for the right to remove its tracks south of the Southern Pacific tracks the Portland Railway, Light & Power Company agrees to improve Second Street, one block on Main Street and to erect a waiting room just north of the Southern Pacific tracks and to place two cluster lights between Oregon City and Canemah.

The company agreed to improve Second Street by grading it and placing macadam upon it 8 inches deep and 30 feet wide. This improvement will start at Main Street in Canemah. On Main Street the company agrees to place the macadam a width of 40 feet and 8 inches deep with screenings on top. It also agrees to put in the necessary walks and curbing. The cluster lights which are to be installed will be maintained by the company.

(Continued on Page 3.)

COUNTY TREASURER TO COLLECT TAXES

BILL PASSED BY SENATE MAKES RADICAL CHANGE IN WORK

STATE BOARD OFFERS EASURES

All Taxes Not Paid by September 1 Delinquent and Penalty and Interest Will Be Added to Bills

The bill which makes the county treasurer tax collector, instead of the sheriff, has been passed by the Senate and is up to the House. The bill does away with the 3 per cent rebate and also with the 10 per cent penalty and 12 per cent interest on taxes unpaid prior to the first Monday in April. In lieu of the rebate and the penalty and interest it provides for a cumulative penalty of 1 per cent for each calendar month or part thereof that taxes remain unpaid after the first day of April.

The privilege of paying one half of the tax charged against any real property or the personal tax charged against any individual prior to April 1 is retained. All taxes unpaid on the first day of September become delinquent, and the same penalty and interest now provided by law for delinquent taxes become applicable. The sheriff is to be the collector of all delinquent taxes under the new law.

House Bill 414 changes the date of the meeting of County Boards of Equalization to begin the second Monday in September instead of the third Monday in October. This provides for an earlier levy and extension of the tax and the opening of the tax roll for collection at least one month earlier than is permitted under the present law.

The bill provides that water rights and water powers shall be taken into consideration in determining the value of real property for assessment purposes. It requires that cultivated lands of the same character and quality and similarly situated shall be assessed at the same value. It makes the Treasurer tax collector.

(Continued on Page 2.)