

**THE WEATHER.**  
 Oregon City—Rain, south-  
 erly winds.  
 Oregon—Occasional rain to-  
 day; southerly winds.

# MORNING ENTERPRISE

WEEKLY ENTERPRISE ESTABLISHED 1866

The only daily newspaper be-  
 tween Portland and Salem; cir-  
 culates in every section of Clack-  
 amas County, with a population  
 of 30,000. Are you an advertiser?

VOL. IV—No. 32

OREGON CITY, OREGON, FRIDAY, AUGUST 9, 1912

PER WEEK, 10 CENTS

## ROCKEFELLER AIDS N. Y. CRIME PROBE

JOHN D. JR., OBTAINS IMPOR-  
 TANT EVIDENCE IN GOTHAM  
 POLICE GRAFT

## WORK STARTED BEFORE BIG TRAGEDY

Young Sunday School Teacher Con-  
 ducts Mock Disorderly House  
 To Obtain Necessary  
 Information

NEW YORK, Aug. 8.—John D. Rockefeller's millions and the wealth and personal influence of his son John D. Rockefeller, Jr., today are enlisted in the war against the alliance of the New York police and the underworld of the metropolis, which was exposed by the pistol shots which killed Gambler Herman Rosenthal in front of the New Metropole hotel.

The fact that the Rockefellers are interested in the fight to run down the Rosenthal slayers, and to expose police corruption was admitted here today by District Attorney Whitman. He declared that young Rockefeller with the backing of his father, has been operating a pretended disorderly house in the heart of the tenderloin to get evidence against the police and the white-slavers they protect.

The Rockefeller experiment was not connected in its inception with the Rosenthal inquiry, but the evidence gained by the son of the "Oil King" coincides with much of that which Whitman has gathered and perhaps it will be used at the trial of Police Lieutenant Charles Becker, who is accused of planning the murder of Rosenthal by hired gangsters when the gambler threatened to expose the blackmail schemes by which it is alleged Becker and "higher-ups" in the police department levied tribute on the world of vice.

Rockefeller's project, Whitman said, was begun in the interest of social reform. It is understood young Rockefeller has proof that the common disorderly houses pay a \$600 monthly graft to the police for protection that the more elaborate of the houses pay more and the lesser "jolians" what their traffic will bear.

Rockefeller, the district attorney declares, has discovered that white-slavery is a regular trade and that country girls and girls from abroad are taken to the resorts and put up at auction in exactly the same manner as negroes were sold before the war. Little progress, apparently, has been made in the hunt for Rosenthal's actual slayers. Harry Horowitz and Louis Rosenzweig, two of the men who are alleged to have killed Rosenthal, are still at large, while the two gangsters taken, "Whitely" Lewis, and "Dago Frank" Clorici, still maintain a stubborn silence in the Tombs.

The only headway Whitman has made, so far as is known, is in confirming the story told by "Bald Jack" Rose, who declares he was graft collector for Becker. Whitman admits he has found ten persons who will confirm Rose's confession in detail, and upon this evidence strong hopes are entertained that Becker will be convicted and forced to weaken, will reveal the whole details.

## \$823.05 PAID TO RECORDER IN JULY

The county recorder's office collected in fees in July \$823.05, which is the second largest amount ever received by the department in one month. Despite the press of business Mrs. Williams, who has charge of the office, and is attending to the work in a very acceptable manner, did not consider the employment of extra help. The usual office force attended to the business with dispatch to the satisfaction of all persons having business with the department.

## WORK ON RAILWAY IS BEING PUSHED

BRIDGE BUILDING AND GRADING  
OF SOUTHERN PROGRESSES  
RAPIDLY

## MORE THAN \$200,000 SUBSCRIBED

Clearing Of Route To Molalla Com-  
 pleted And Grading From  
 Mulino Is About  
 Finished

Work on the Clackamas Southern Railway is being pushed vigorously, both on grading and building of bridges. The Fifteenth street trestle has been equipped with ties and is ready for the rails. The crossing timbers to make connection with the O. W. P. are nearly all cut and this part will soon be erected, connections put in and steel laid.

The trestle No. 2, an overhead crossing, and trestle No. 3 are complete except for the ties.

Trestle No. 4, which crosses the Wendt Creek Canyon, is being built, by the Interstate Contract Company which sub-contracted the bridges from Archer Mason Company.

This trestle is more than 700 feet long and 120 feet high and many persons thought this part of the work would be too much for local people to accomplish, but any one visiting the scene of the work and watching the busy driving of piles, the unloading of the piling and the immense sawed timbers, will be convinced that there will be a railroad running from Oregon City to the Molalla country soon. This trestle will be completed within three weeks, and by then all the grading will be finished from Oregon City to Beaver Creek. Ties will then be laid and steel will be on the ground as soon as it can be delivered.

Clearing of all rights of way to Molalla has been done and nearly all the grading between Mulino and Molalla, together with more than one mile of hard grading this side of Mulino has been finished.

The piling (10,000 lineal feet) for the Molalla bridge is cut and piled ready for delivery and that for the Milk Creek bridge is cut and ready excepting a few pieces. Four saw mills are rushing the timbers for the bridges—and twelve to twenty teams are hauling timber and piling every day.

The total of subscribers numbers nearly 260 and the total amount subscribed is around \$200,000 cash value.

Taking into consideration the many obstacles, thrown in the way of the building of the line by antagonistic interests, the success of the enterprise is little short of phenomenal.

With the renewed move subscriptions are coming in and it will not be surprising to see this road entirely built by stock subscriptions and owned and controlled by residents of the county.

Mount Angel voluntarily and without personal solicitation brought in a total of subscriptions for \$30,100 cash value, or \$60,200 par value, and among the subscribers are numbered the most prominent men in and around Mount Angel.

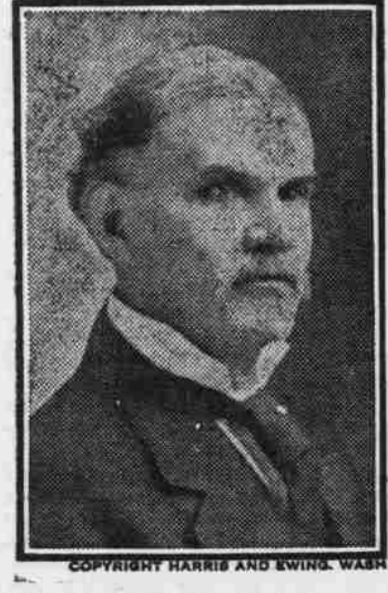
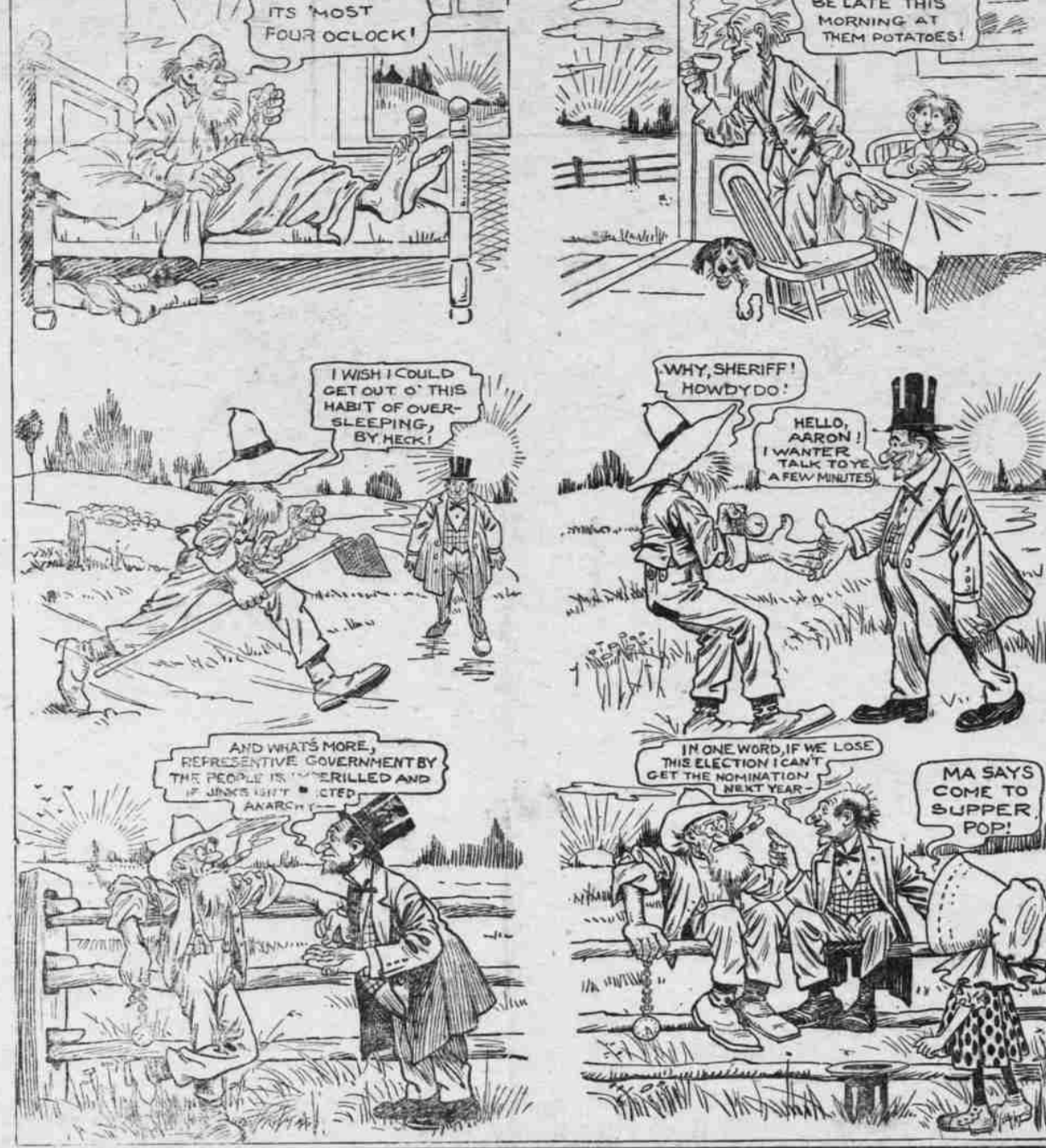
Scotts Mills came forward with an offer of \$20,000 cash and Monitor with a like amount providing the road would touch their sections. Marquam is raising \$15,000 and possibly will make it \$20,000.

With 360 to 450 substantial ranchers, business and professional men behind an enterprise which has the merit of the Clackamas Southern Railway has, it seems that it will be a hopeless task to try to prevent it being built.

Boost your city by boosting your daily paper. The Enterprise should be in every home.

## THE OUTLET PERPETRATED BY WALT McDUGALL

THE ONLY THING THAT STOPS FARMING IS POLITICS!



Senator John Sharp Williams, United States Senator from Mississippi.

## RAILWAY CONTROL OF CANAL FEARED

CANADIAN PACIFIC PLANS CAUSE  
MUCH DEBATE AT SENATE  
SESSION

FREE REGISTRY TO BE EXTENDED

Restriction Is Placed On Vessels  
Owned By Railroads—Final  
Vote On Canal Bill Ex-  
pected Today

WASHINGTON, Aug. 8.—The extent to which the Canadian Pacific Railroad might control traffic through the Panama Canal gave the Senate occasion for much debate when the anti-railroad section of the canal bill was reached late today.

Little objection developed to the proposed plan to prohibit railroad-owned ships from engaging in American coastwise trade through the canal.

The plan adopted by the Senate committee however of attempting to restrict the operation of foreign-owned railroad ships causes wide difference of opinion.

Senator Simmons proposed to strike out all reference to foreign railroad ships. Senator Bristow urged adequate control of American coastwise traffic, so that the transcontinental roads could not control rates in the canal, but he did not believe the Canadian Pacific ships would prove a menace, if they were permitted to engage in American coastwise trade they would be bound to American law, he said. The Senate practically finished all but the railroad ship section before the recess at the end of the afternoon session. At the session tonight it was believed a final vote would be had on the bill tomorrow.

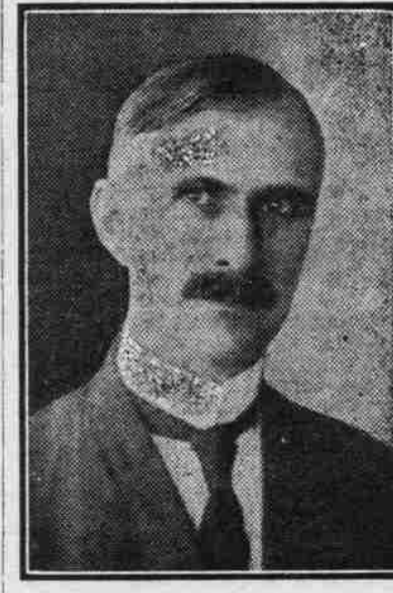
The amendment to permit foreign-built ships owned wholly by Americans to participate in coastwise privileges was offered by Senator Williams. It provoked an acrimonious passage in which Senator Martin was accused by Williams of making a protectionist speech in favor of Virginia shippings.

The amendment was defeated by a vote of 38 to 10. Williams then offered another, to admit to American registry American-owned ships of foreign make which are engaged exclusively in foreign trade.

The second Williams amendment was adopted, 34 to 24. Many Republicans voted for it, expressing their belief that it would enable many foreign-built ships to fly the American flag without bringing the cheaper ship-auditing of foreign nations into competition with American plants.

Lower tolls for ships passing through the canal "in ballast" were proposed by Senator Johnston, of Alabama, and an amendment was adopted to authorize such reduction in rates.

Another fight developed against the Senate committee's amendment to exempt from tolls American vessels in foreign trade whose owners agreed to turn them over to the Government in time of war.



Maurice H. Thatcher, Governor of the Canal Zone, Panama.

## GIRLS BACK FROM LONG HORSEBACK TRIP

Four girls, three of them school ma'ams, returned Thursday from an eight days trip on horse back into Eastern Oregon. They are Pearl, Gertrude, Inez and Blanch Bailey, the first three being well known school-teachers of this section. Their home is near Sherwood. They traveled about 250 miles over the Cascade Range and inspected their wheat farm at Tygh Valley. On their way over they stopped at Welches and on the return spent a short time at Government Camp at the base of Mount Hood. They climbed the mountain and enjoyed it thoroughly. They relate many interesting experiences of their trip. They took their blankets and roughed it during the entire trip, sleeping out in the open and eating when hunger seized them. The girls are tanned and bronzed from their out-of-door ride across the mountains.

## COURT PLANS MAKING FILL ON GARNER ROAD

The county court at its meeting Thursday considered a plan to remove the old bridge on the Garner road between Clackamas and Milwaukie and make a fill using a large culvert. The members of the court made an inspection of the bridge in the afternoon, and it is probable that the improvement will be ordered. The bridge is one of the oldest in the county, and probably would not be serviceable long. County Judge Beatie said that it would take about 3,000 yards of earth to make the fill.

## CUPID OPENS COURTHOUSE AND COUPLE SOON WEDS

Justice of the Peace Samson officiated Thursday evening at the marriage of Fred Seely and Miss Maggie Barnes, both of Wilsonville. The young people, who are well known in the west end of the county, reached the city after the courthouse closed, but the ever-accommodating County Clerk Mulvey took pity on them and unlocked his office to issue the license.

## CLACKAMAS BABES TO BE IN SHOW

COMMERCIAL CLUB WILL PICK  
BOY AND GIRL FOR "EU-  
GENICS EXPOSITION"

## PHYSICAL PERFECTION IS STANDARD

Winning Of Prize Would Be Great  
Advertisement For County—  
Handsome Prizes Are  
Offered

The Board of Governors, of the Oregon City Commercial Club, has endorsed the proposition of the state fair board for an "Exposition of Eugenics" at the state fair at Salem beginning September 2. The board has appropriated \$500 for children's prizes. It is the intention of the Commercial Club to enter children from this county, and parents are urged to communicate with the Secretary of the Publicity Department, O. E. Freytag. A "Child's Welfare Exhibit," under the auspices of the Oregon Mothers' Congress and the Oregon State Grange will be made a part of the exposition of eugenics. Mr. Freytag is confident that the children from this county will take several prizes. The winning of several of the prizes would be a big advertisement for the county. The club has received the following from O. M. Plummer, superintendent of the "Exposition of Eugenics":

The State Fair Board has appropriated \$500.00 this year to cover premiums and expenses of a department to be called the "Exposition of Eugenics," to be held at the State Fair, Salem, week of Sept. 2nd-7th.

This will be a showing of children under four years of age, at which physical perfection and good looks beauty will be the standard. Certain medical standards of weights and measurements will be used, and every child compared with these standards and approach to perfection will be figured on a percentage basis. A corps of well known women physicians will make the test, at the same time pointing out to the mother the strong and weak points in the child's makeup.

A "Child's Welfare Exhibit" under the auspices of the Oregon Mothers' Congress and the Oregon State Grange will be made a part of the Exposition of Eugenics, at which all the approved methods of handling babies, their food, clothing, and other features will be demonstrated daily by trained nurses.

Children will be shown in the following classes:

BOY—Over 6 months and under 2 year, 1st, \$25 cup; 2nd, \$10 cup; 3rd, \$5 cup.

Over 2 years and 3 years, 1st, \$25 cup; 2nd, \$10 cup; 3rd \$5 cup.

Over 3 years and under 4 years, 1st, \$25 cup; 2nd, \$10 cup; 3rd \$5 cup.

Grand Champion Girl—\$50 cup.

Your Commercial Club or Grange is requested to interest itself in a preliminary show along these lines and after selecting the best boy and best girl in its community, the babies and mothers are to be sent to Salem as representatives of your town or section, with their expenses paid by your organization. The sending of a boy or girl to the State Fair who was afterwards determined by a corps of noted physicians to be the best in the State of Oregon, would attract more attention to that locality than thousands of dollars spent in advertising. Many towns in various parts of Oregon have signified their intention of entering this contest—put yours on the map by holding a preliminary show. Any child may be brought to Salem direct without having been entered in a preliminary show.

## GOOSEBERRIES BIG AS PLUMS; COME SEE 'EM

Gooseberries as big as plums. Did you ever see any that large? Well they grow them in a Ketchikan, Alaska, and if you do not believe it just take about five minutes off and call at the office of the Morning Enterprise. The berries were grown in the yard of Mrs. P. E. Timmons, formerly Miss Lizzy Parbratz, and the following is an interesting letter Mrs. Timmons has written to the Morning Enterprise:

"I am also sending you a little package containing some of the largest gooseberries ever grown. They were picked from a garden in Ketchikan I hope they will be of a little interest to you and your friends. These gooseberries are a curiosity in this town.

"We have a nice garden, as nice as any in Oregon City but of course much smaller. There are all kinds of vegetables also, raspberries, strawberries and gooseberries, also salmon berries and huckleberries growing in abundance. The soil is very rich in this country, what little there is of it, and the climate is great, same as Seattle, it only being 700 miles from there.

"I must also speak of the salmon this year, there are more this year than ever before during my stay here which is about ten years."

## DOSE VERDICT AFFIRMED

The Supreme Court has affirmed the decision of the Circuit Court of Clackamas County in the case of Fred Dose, administrator of the estate of L. E. Dose, deceased, appellant, versus the Sheriff of Clackamas County, respondent. The decision carries with it a verdict for \$50.00, and interest at 6 per cent from January 14, 1911 and \$43 court costs.

## SALE OF ELECTRIC LINE IS REPORTED

SOUTHERN PACIFIC SAID TO  
HAVE BOUGHT WEST SIDE  
ROAD FROM P. R., L. & P.

## EXTENSION IS PLANNED TO SALEM

Purchasing Company Has Surveyed  
Route And Competing Line Was  
Expected—Residences  
May Be Saved

A report was current Thursday that the Southern Pacific Company had purchased the Willamette Falls division of the Portland Railway, Light & Power Company. The report was started by a contractor employed by the Southern Pacific, who said that he had obtained the information from an official of the company. It is planned, according to the report, for the electric line of the Southern Pacific to be operated over the route surveyed and the line partially built by the Portland Railway, Light & Power Company from Oswego to Willamette.

The Portland Railway, Light & Power Company has constructed the line from West Oregon City to Bolton and expects to have the line to Oswego in operation by October 31. There it will connect with another division and enter Portland. More than 100 men are now employed on the extension of the road.

Recently the officials of the Southern Pacific Railroad announced that the company would establish a double track line on the West Side from Salem to Portland. The route had already been surveyed. A rumor that the company intended routing all its fast trains that way crossing the river at New Era, where a big steel bridge will be constructed, caused much uneasiness in Oregon City. However, at a conference with a committee of the Oregon City Commercial Club, officials of the company announced it was not the intention to operate steam trains on the west side route. The plan was, they said, to operate only electric trains to relieve passenger traffic, and also give that section the benefit of railway service.

The information that the Southern Pacific Company has purchased the right of way and line of the Portland Railway, Light & Power Company, if it is verified, will interest many residents of the west side through whose property the route survey by that company, and which probably will be abandoned extends. In several instances the route cuts through residences, and in case the road is constructed the company will have to pay heavy indemnities.

## LIGHTNING KILLS COW AND HITS MILL

Lightning played freakish pranks in Oregon City Thursday, killing a cow on North Main street. A bolt struck the corner of the main building of the Oregon City Woolen Mills, running over the trolley wire attached to the building, and a ball of fire went down the wire, breaking it, and striking the pulley building. No serious damage was done.

At Thirteenth and Main streets a bolt of lightning struck the top of a telephone pole and ran down a heavy twisted guy wire, melting the strands and breaking the glass insulator that was attached to the wire close to the ground. When the bolt hit the pole every glass insulator was shattered into bits, and the bolt after leaving the wire grounded in a rat hole under the sidewalk. If there was a rat there, it never came out to question the cause of the disturbance.

If it happened it is in the Enterprise.

## Entire change of Pic- tures today

## The Lennes Sisters

Singing and Dancing Act

## THE GRAND

Pathe's Weekly To-  
morrow



PHOTO UNDERWOOD & UNDERWOOD, N. Y.

Legal Lights in the Steel Trust Case. From left to right are Henry P. Brown, special master appointed by the U. S. Circuit Court to take testimony in the Government's suit to dissolve the U. S. Steel Corporation; Jacob M. Dickinson, ex-Secretary of War, who appears for the Government as a trust-buster, and R. V. Lindabury, chief counsel for the Steel Corporation.

## POTTERY CLAY FOUND NEAR ESTACADA

A bank of pottery clay, which may prove to be fire clay, has been discovered on the farm of F. J. Harkenrider, three-quarters of a mile northeast of Estacada. Borings for a distance of 500 feet in all directions show a large deposit. The depth is unknown but it has been bored four feet. Tests show it can be used for pottery. The clay is bluish-green and of fine quality. Tests are to be made at Portland of samples which Mr. Harkenrider has prepared.

## ESTACADA GIRL DETAINED ON INTOXICATION CHARGE

Mary Oberstaller, of Estacada, will be brought before County Judge Beatie of the Juvenile Court, to answer to a charge of intoxication at Estacada. The case was remanded to the Juvenile Court by City Recorder Devore, of Estacada. Mary is 16 1/2 years of age and will be brought here by Deputy Sheriff Ames.

A small classified ad will rent that vacant room.