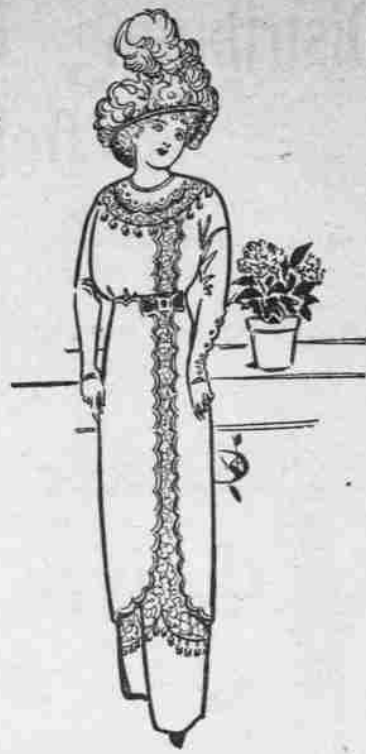


Topics of Interest.



Mrs. Smith—Do tell me, Maggie, what you servants find to talk about down in the kitchen?



WHITE LINEN

Heavy white linen is used here. This costume shows a lavish use of hand embroidery in the finishing of the many scalloped edges on tunic, sleeves and collar.

LOCAL BRIEFS

Dr. van Brakle, osteopath, Masonic Building, Phone Main 399.

Miss Ida Bullard, of Redland, is visiting relatives in this city.

Miss Emma VanHoy arrived in Oregon City Thursday, and will spend her vacation here with her parents, Mr. and Mrs. O. A. VanHoy.

ORATOR THRILLS WITH WAR RECITAL

Prof. Lee Emerson Bassett, readings. 1:15—Concert, Chapman's orchestra. Soloists, Miss Agnes Johnson, pianist.

American Partridges. In the north, where the ruffed grouse is known as the partridge, the bobwhite is called the quail.

Little Journeys to the Home of Oregon Industries

(Written for the Morning Enterprise by Colonel E. Hofer, Manager Made in Oregon Campaign.)

MOOSE STAMPEDE IS JOYOUS EVENT

Promptly at 7:30 o'clock on Wednesday evening the Loyal Order of Moose 961, of Oregon City, left for Portland in the special car on a visit to its brother Moose of the Rose City.

GOOD RUN OF LIVE STOCK IN PORTLAND

There was a good run of livestock at the yards in North Portland Thursday and sales were active. Two bunches of hogs brought the top price \$8.40.

CHARLES HOLMES HAS DELIGHTFUL PARTY

Charles Holmes entertained a few of his friends at Rose Farm, the home of his aunt, Miss M. L. Holmes and Mrs. Dan O'Neil, Wednesday evening.

Change of Location

Portland Railway Light & Power Company's

Light and power department will be located at 617 Main Street, in the Beaver Building, after July 4th.

Lamp renewals, collections, contracts and supplies at this office.

Advertisement for Portland Railway Light & Power Company's lamp renewals, collections, contracts and supplies. Includes information about the new location at 617 Main Street and the Beaver Building, and details about lamp services.

Advertisement for Dinner Sets from The Enterprise. Promotes a limited number of fine, 31-piece, gold-trimmed dinner sets available for subscription, with a call to phone the office for an offer.

Advertisement for Southern Pacific Railroad of Mexico, promoting opportunities for wealth in cattle, farming, mining, and timber along the route between Sonora and Sinaloa.