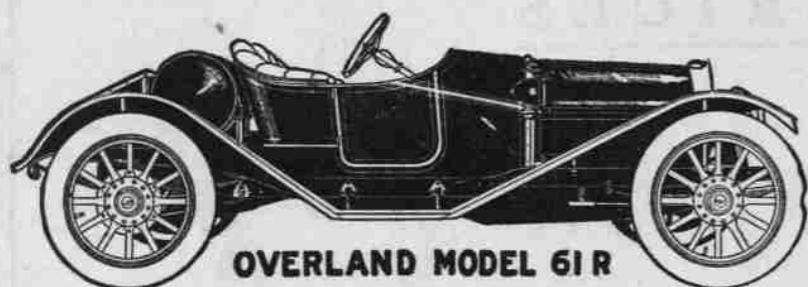


Great Automobile Display

The *Overland* Cars

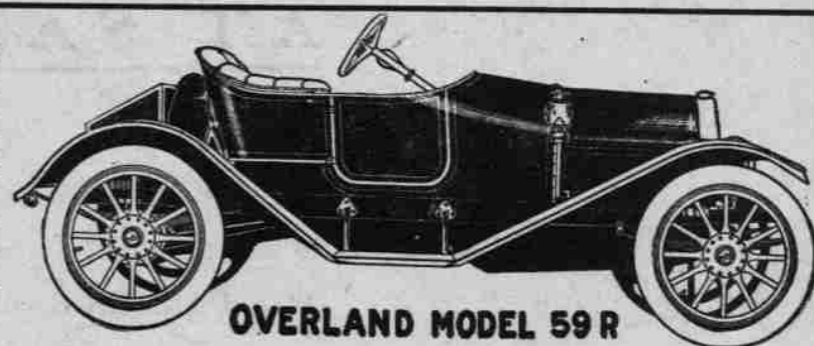


OVERLAND MODEL 61R

F. O. B. Oregon City, \$1700, fully equipped. Full 45 H. P.

This torpedo type is a jolly little car for "just two." It is as graceful as our designers could conceive it, as strong and dependable as Overland engineering skill could make it—equally good for long or short trips. Costs very little and you cannot buy its equal elsewhere.

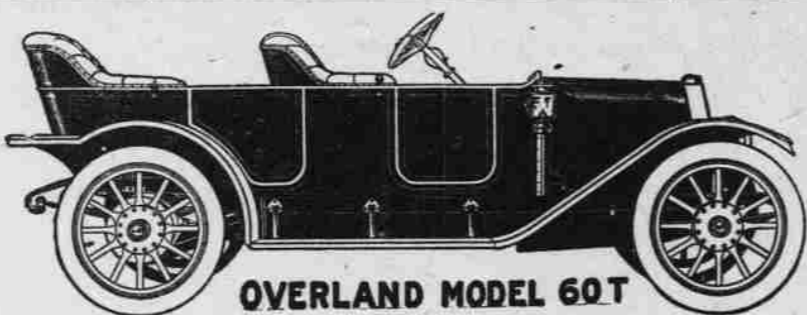
This model combines strength, speed and grace—all typical Overland qualities. We offer here to the man with the modest pocketbook a car of service and beauty. To understand its many practical, satisfying features, to know its beauty, study this illustration.



OVERLAND MODEL 59R

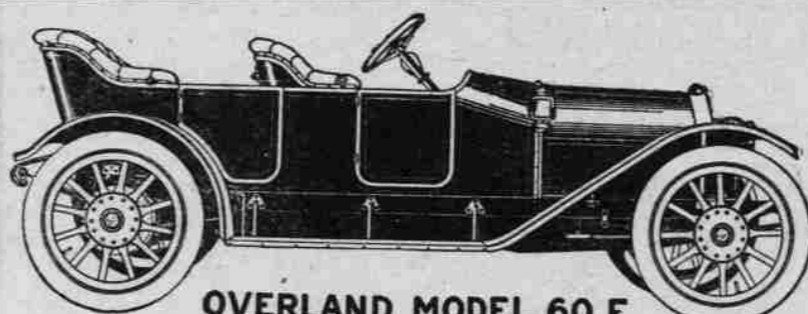
\$1100 F. O. B. Oregon City fully equipped. 30 H. P.

A model embodying every feature conducive to ease of operation. An ideal car for those who appreciate the fact that starting, stopping, and speed changing are robbed of complication. Especially adapted for women and children—strong, sturdy, reliable and costs little to operate.



OVERLAND MODEL 60T

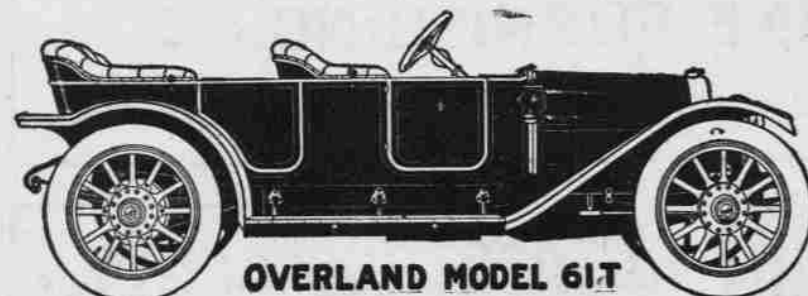
\$1425 F. O. B. Oregon City, fully equipped. 35 H. P.



OVERLAND MODEL 60 F

\$1425 F. O. B. Oregon City fully equipped. 35 H. P.

Conserving the graceful lines of the racer with the sturdy qualities of the touring car, of which much service is expected. Overland touring cars are built to "tour," offering strength, reserve power, speed and easy riding. Price low—Value far above the ordinary.

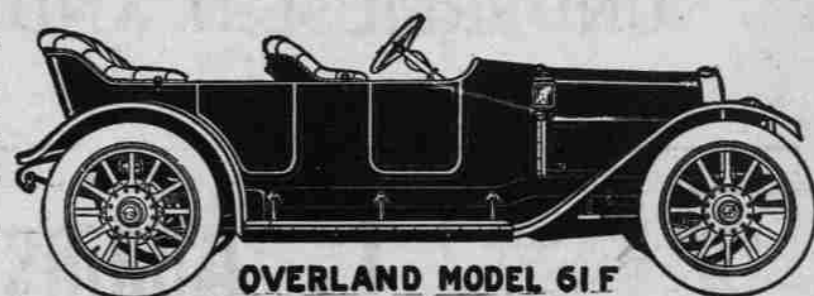


OVERLAND MODEL 61T

\$1750 F. O. B. Oregon City, fully equipped. 45 H. P.

You can pay more for a touring car, but you cannot get a better one at the price. We offer here every refinement of equipment and finish found on the highest priced car. If you intend to pay more, see this car first—it may change your mind and save you money.

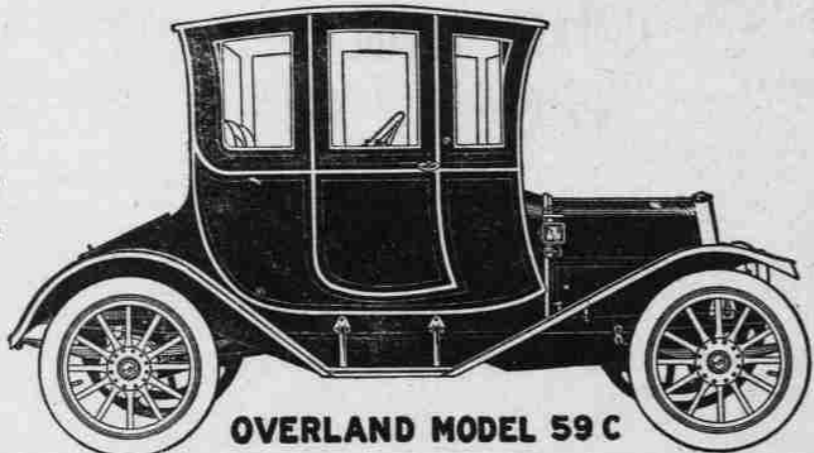
Admitted by experts to be the most perfect torpedo body in existence—and guaranteed to embody Overland quality and workmanship. A power plant most elastic in speed and power requirements.



OVERLAND MODEL 61F

\$1750 F. O. B. Oregon City, fully equipped. 45 H. P.

An ideal car for professional men, particularly doctors, with whom dignity of appearance and weather protection are essentials. Designed along latest lines—a beauty in appearance and a model of utility.



OVERLAND MODEL 59 C

\$1375 F. O. B. Oregon City full 30 H. P.

The Car they all turn to look at.



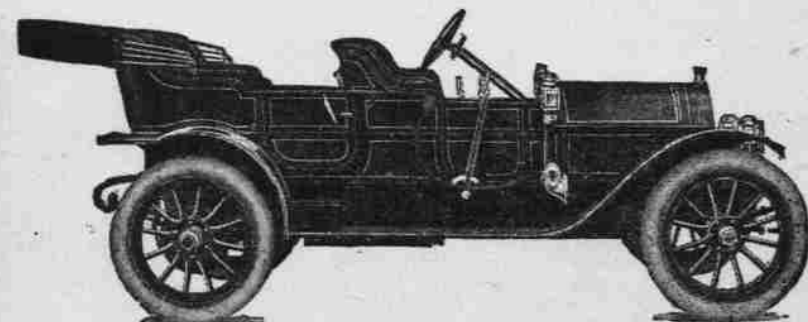
OVERLAND MODEL 59 T

The most modestly priced touring car on the market. Reserve power and speed to meet all rational requirements. A big roomy body, carrying five passengers with all comfort.

\$1100 F. O. B. Oregon City 30 H. P.

When we say fully equipped, we mean top, windshield, lamps, horn, stool, speedometer, and everything you will need. Let us give you specifications on these cars.

See These Handsome Mitchell Cars



Mitchell Baby Six

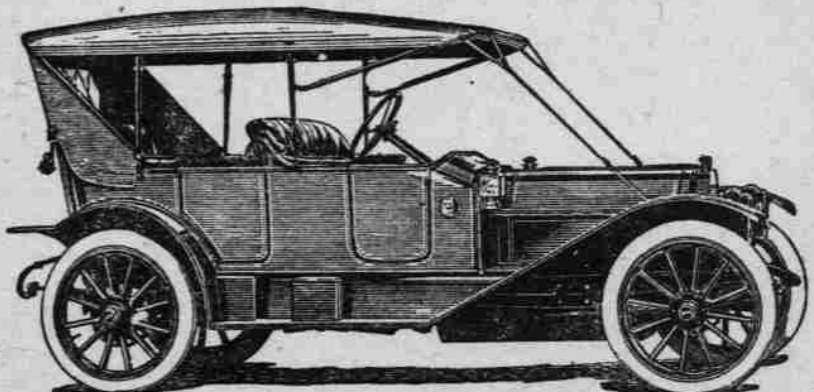
\$1500 F. O. B. Oregon City

Full 36 H. P.

Mitchell Touring

\$1900 F. O. B. Oregon City.

Full 48 H. P. A beauty.



We show here only two models of the Mitchell, but have others on display. These cars are so well known that most every one has heard of them. We will be pleased to give a demonstration of either the Mitchell or Overland any time or place.

C. G. MILLER, The Auto Man

We carry everything in the Auto line; have one of the best Garages in the State and will back up anything we sell.

Tel. Main 77