

MORNING ENTERPRISE OREGON CITY, OREGON

E. E. BRODIE, Editor and Publisher.

Entered as second-class matter January 9, 1911, at the post office at Oregon City, Oregon, under the Act of March 3, 1879.

TERMS OF SUBSCRIPTION. One Year, by mail \$3.00 Six Months, by mail 1.50 Four Months, by mail 1.00 Per week, by carrier .10

ADVERTISING RATES

First Page, per inch first insertion... 15c Preferred position any page, per inch first insertion... 15c Preferred position any page, per inch added insertions... 10c

Legal advertising at legal advertising rates. Circus advertising and special transient advertising at 25c to 50c an inch, according to special conditions governing the same.

"Fire Sale" and "Bankrupt Sale" advertisements 50c inch first insertion, additional insertions same matter 25c inch.

New items and well written articles of merit, with interest to local readers, will be gladly accepted. Rejected manuscripts never returned unless accompanied by stamps to prepay postage.

CITY OFFICIAL NEWSPAPER.

IT'S ONLY FIRST BLOOD.

The news that the government has won first blood in its contention with the Southern Pacific railway in its fight for the ownership of the many acres of lands that were given to the railway conditional, and the terms of which condition have been ignored and denied many times in the past by the company, will be good news to hundreds who have been waiting to get a piece in the game of homesteading—if the government so puts it on the market—or in the event it is sold at the rate established of \$2.25 the acre.

Where the railway has been lame in its effort to reap a larger sum than what Congress gave it. If the lands had been sold at the figure set it would have made a large profit in the deal. But at the figures which the company has been planning to get, with the trades which they have been able to put over on certain officials who traded one class of land for another, the company always getting the best of it, they stand to win many millions more than they deserve or than the contract calls for.

Naturally the company is determined not to yield unless absolutely forced to. And it is no wonder there is a determination to fight to the bitter end rather than yield. And the public expression of its belief that it will ultimately win is simply the paving of the way for winning—by fair means or foul. The spending of a few thousands to win will not be a drop in the bucket with such a stake in the balance.

The lands in dispute are broad enough in acreage to make a kingdom in domain. The withholding of this acreage from the people who wish to settle it as homesteads in 160 acre tracts, for the sake of speculation, is a crime of no mean degree. For the government to permit this as long as it has to confess stupidity if not a greater offense. To permit the company to further juggle with the cards so that the company wins all the prizes, and the people draw all the blanks, is the sort of government that makes

for dissatisfaction among the masses and a determination to change the government at every turn of the wheel. But the people are very simple if they think for a moment that the battle is won. The company has only begun to fight. It is an old trick of the courts to hand down a sound decision at the first, and secure the plaudits of the people, simply to make it bearable when the decision that the company is waiting for is rendered later. If the people are to win in this fight there must be vigilance to the very end of the fight.

ROSE FESTIVAL HAS MANY NEW FEATURES

OFFICIAL PROGRAM ANNOUNCED FOR THE WEEK—JUNE 5-10 DAYS CHOSEN.

The official programme for the Rose Festival of the week of June 5-10 has been announced, and embraces all of the former features that have made the celebration so attractive, and there are a large number of new events that bid fair to add still greater interest to the festivities. There will be six daylight and night parades, including the horse and carriage, the automobile, the school children's and the electrically illuminated float parades; a big fraternal men's night, the spectacular "Shower of Roses," a marine carnival, a civic and military grand ball, massed bands playing concerts in the streets, the usual competitive rose show by the Portland Rose Society and Riverside Driving Association, and other stunts. The programme in detail is as follows:

Rose Sunday, June 4. Ceremonies and exercises appropriate to the occasion. Greetings and imposing welcome to the rose, Queen of flowers. Special sermons in many pulpits glorifying the return of the fragrant and beautiful rose.

Monday, June 5. Home-coming day. Hearty welcome to all visitors. High noon—Arrival of Rex Oregonus up-river on royal barge conveyed by fleet of loyal mariners. Grand review—Water pageant, consisting of gaily decorated boats and water craft of every variety.

Tuesday, June 6. 10:00 A. M.—Musical symposium and street serenades by Rose City bands on most elaborately decorated thoroughfares. 2:00 P. M.—Formal opening of the competitive rose exhibit at the Armory, under the auspices of the Portland Rose Society.

Wednesday, June 7. 10:00 A. M.—Competitive rose exhibit at the Armory. Band concerts on principal decorated streets. 2:00 P. M.—Grand parade of decorated automobiles, contesting for prizes. 8:00 P. M.—Competitive rose exhibit at the Armory.

Thursday, June 8. 10:00 A. M.—Bands parading principal thoroughfares. 2:00 P. M.—Brilliant decorated horse and vehicle parade in competition for prizes. 8:00 P. M.—Illuminated civic and military pageant, brilliant, dazzling and spectacular.

Friday, June 9. 10:00 A. M.—Serenades by Rose City bands through streets elaborately decorated, reception by Portland business houses to out-of-town customers. 10:20 A. M.—"Shower of Roses" by Peninsula rosarians. Train of five cars loaded with roses will be used.

King and Queen of England as They Appear When Not on Parade



King George V and Queen Mary are seldom seen by the public when they are not to a certain degree on dress parade. Consequently the picture printed above, showing them as they emerged from an art gallery on a recent visit, is more than usually interesting. It can be said in all fairness that the royal couple would not attract any particular attention in a crowd where they were not known. The most striking thing about the king is his beard, a full growth that belongs to several different types and which is seldom seen in the United States in these days of safety razors. He is not bad looking, this ruler of Great Britain, but he does not look as kingly as a well-wisher of royalty would wish. Queen Mary, to judge from this photograph, is not particularly stylish in appearance. But one should remember that a snapshot photograph is never flattering, and it often catches the victim in a pose that is distinctly the reverse.

The streets will be a veritable carpet of flowers. 1:00 P. M.—Special matinee given by the Riverside Driving Club at the Country Club grounds. 5:00 P. M.—Grand parade of human rosebuds, East Portland, 5000 school children participating. 9:00 P. M.—Crowning social feature of the Festival, grand military ball at the Armory, given under the auspices of the Oregon National Guard.

Saturday, June 10. 10:00 A. M.—Marching bands serenading the elaborately decorated streets and business houses. 2:00 P. M.—Special racing matinee at the Country Club, given under the auspices of the Portland Hunt Club. 8:30 P. M.—Most grand and imposing electric parade in honor of Rex Oregonus, who will depart with Spirit de Carnival, in a blaze of glory.

Basket Social Saturday Evening. Miss Pearl Miller, who teaches the Shubel school, is planning for a literary entertainment, followed by a basket social, on Saturday evening, April 29. It is to be a big social event and the proceeds from the sale of the baskets are to be used in the purchase of a school library. Justice of the Peace Samson will go to the entertainment and will auction off the baskets for Miss Miller.

SOUTHERN PACIFIC MUST YIELD LANDS

FEDERAL COURT DECIDES THAT COMPANY HAS FAILED TO KEEP FAITH.

PORTLAND, Or., April 24.—Federal District Judge Charles E. Wolverton decided this morning that the Southern Pacific and the Oregon & California railway companies must forfeit to the United States Government about 2,400,000 acres of land, which is valued at from \$40,000,000 to \$75,000,000.

After one of the most impressive legal combats ever waged in the history of America, the court rules that an empire in Oregon cannot be bottled by the railway interests. Taking the plain words of the act of Congress granting the land for railway construction, aid, the court holds that Congress intended this land should be sold to bona fide settlers in tracts not greater than 160 acres to one individual, and at a price not exceeding \$2.50 an acre.

While deciding in favor of the Federal Government, Judge Wolverton decided against the several thousand intervenors in the case. He holds that they have acquired no right whatever by either settling on the land or tendering the maximum sum per claim specified by law. The effect of this portion of the decision is that the grant lands affected cannot be secured by any individual until the President or Congress again opens it to entry or sale. The 87 entrymen who had gone upon the land as settlers before the suits of the Government were commenced, also lose their claim, and are held to have gained no advantage whatever by their period of settlement. Something more than 5000 intervenors have filed applications to get a portion of the land, but their supposed rights are brushed aside, leaving the entire tract open to disposition by Congress, as if it had never been offered to the railway interests as a grant.

ANOTHER LAND OFFICE.

WASHINGTON, April 24.—Oregon delegation has been requested to work for the creation of another land office, either at Prineville, Bend or Madras. The members desire that a general canvass be issued to bring to them a reflection of sentiment throughout regions affected, thus enabling them to act in accordance with the popular will. Senator Chamberlain has introduced a bill construing the law of 1890 more liberally for soldiers.

WANTED—You to know that the Enterprise job printing department is the most complete in the State, outside Portland. Try it for your next printing.

Small Deposits Wanted

We encourage them because many large accounts began in a small way. The small depositor of today becomes the large one of the future. More people would be bank depositors if they realized how it would help in building their credit and their success.

The Bank of Oregon City

D. C. LATOURETTE President F. J. MEYER, Cashier THE FIRST NATIONAL BANK OF OREGON CITY, OREGON CAPITAL \$50,000.00 Transacts a General Banking Business Open from 9 A. M. to 4 P. M.

R. W. & R. S. Ward MACHINISTS

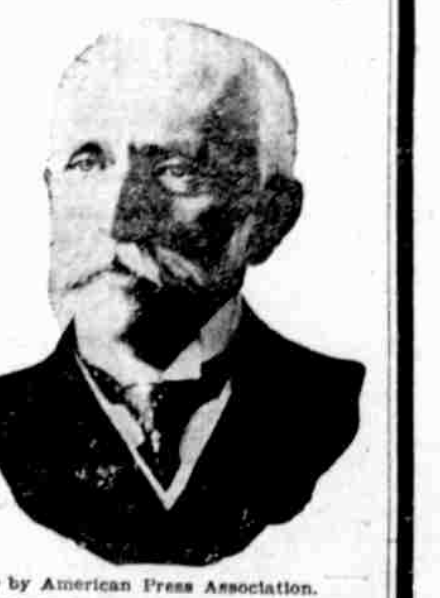
We do general repairing. Broken machinery made to do its job. Work as new. Experts with gasoline engines. Phones: Main 2994, Home 198. 109 FOURTH STREET OREGON CITY.

LATEST MARKETS

Portland Markets. Receipts for the week were: Cattle 1083, calves 12, hogs 987, sheep 2281, and horses and mules 58. The sale of 1091 pounds of cattle at \$7.05 was the high water mark for the year, but toward the end of the week there was less demand for fancy stuff and 264 head that were prime brought only \$6.90. In view of the fact that \$6.60 to \$6.75 was the top for corn fed natives at Chicago, the strength of this market is apparent. The demand for butcher cattle has not on any day been supplied. Cows and light steers were most wanted and the offerings were taken up quickly at strong prices. The hog supply was mostly made up of contract deliveries from Missouri River. 154 mixed hogs of medium quality sold for \$7.25. The sheep market was steady to strong and anything carrying enough flesh to be classed as mutton sold at strong prices. The horse market was a bit dull due to a big auction sale at Portland. There was some inquiry and a few sales. Representative sales have been as follows: 182 steers.....1090 \$7.05 264 steers.....1220 9.20 47 steers.....493 6.75 297 steers.....1124 6.50 8 calves.....188 8.00 1 bull.....1570 6.25 5 bulls.....1540 4.75 1 cow.....1650 6.00 11 cows.....1070 7.75 20 cows.....1958 4.85 21 cows.....868 3.00 154 hogs.....188 7.25 6 hogs.....360 6.80 1 hog.....350 5.00 378 lambs, sheared.....81 5.40 250 wethers, sheared.....114 5.00 233 wethers, sheared.....87 4.76 16 wethers, sheared.....112 4.65 1 team drafters.....\$375 1 saddler.....180 15 express horses, each.....140

Oregon City Markets. There is an uncertainty in the markets today. Those who object to the changing of the tariff by the Democrats blame the uncertainty on the prospects of a change and say that the changes in prices are along the line of things that are likely to be changed in the schedule. In these cases a falling off is in prospect. Where there are nearly exhausted stocks the tendency is upwards. Where the new products of the season are soon to show up the price in downward again. There is no general proposition that is influencing markets unless one counts the tariff tinkering as in that class. APPLES—Local stock is commanding from \$1 to \$2 bushel, with very few in the country of any kind and fewer yet that will get the higher price. Hood River stock is bringing \$2.50 for good and a little more for fancy. POTATOES—Prices for tubers are still climbing and have gone over \$1.50 and \$1.75, with some fancy stock bringing \$2.25. Extra fancy will bring almost anything one can ask in small lots. One dealer says he will pay \$2 for a whole car load, and if the car

Americans Are Keeping Up the Mexican Revolt



By JOSE YVES LIMANTOUR, Mexico's Minister of Finance

AMERICANS who have allied themselves with the insurrectionists can scarcely expect PROTECTION LONGER UNDER THE AMERICAN FLAG, and it would seem obvious that they take their own chances for committing depredations on property under a foreign flag. I AM FIRMLY CONVINCED THAT EXCEPT FOR THE SYMPATHY, FINANCIAL SUPPORT AND ACTUAL PARTICIPATION IN CONFLICT OF AMERICANS THE INSURRECTION IN CHIHUAHUA AND SONORA COULD NOT LONG CONTINUE. ALMOST DAILY ONE READS OF THE PART TAKEN BY AMERICANS IN THAT INSURRECTION, AND THEY ARE THE ONLY KNOWN LEADERS EXCEPT MADERO.

I wonder if those individuals and other Americans who have had any SYMPATHY for or have taken any part in that INSURRECTION realize the full significance and importance of their attitude and acts. As is pretty generally known, the line of the National Railways between Juarez and Torreon is practically out of service because of the DEPRADATIONS COMMITTED BY MEXICAN REBELS AND AMERICAN SYMPATHIZERS.

The Kind That STANDS OUT

GLOSSY HANDSOME STATIONERY Our New Steel Die Embossing Machine IS THE THING

Oregon City ENTERPRISE

In the front rank of the ART PRESERVATIVE PRINTING BOOKBINDING LOOSE-LEAF SYSTEMS

WANTED-A RIDER AGENT

IN EACH TOWN and district to ride and exhibit a sample Laidley "Manger" bicycle furnished by us. Our agents everywhere are making money. We pay full particulars and special offer. MONEY REQUIRED. We ship to anyone anywhere in the U. S. without a cent advance, and allow TEN DAYS FREE TRIAL. Which time you may ride the bicycle and put it to any test you wish. If you are then not perfectly satisfied or do not wish to buy, we will ship it back to us at our expense and you will not be bound. FACTORY PRICES. You save 50% to 80% in cost by buying direct of us and have the manufacturer's guarantee. We will give you a bicycle or a pair of tires from our stock of bicycles and tires. We will also give you a bicycle and a pair of tires from our stock of bicycles and tires. You will be astonished when you receive our beautiful Laidley bicycle. Fully low prices we can make you this year. We will give you a bicycle and a pair of tires from our stock of bicycles and tires. We will also give you a bicycle and a pair of tires from our stock of bicycles and tires.

Hedgethorn Puncture-Proof Self-healing Tires. \$10.00. A SAMPLE PAIR TO INTRODUCE, ONLY \$4.00. NO MORE TROUBLE FROM PUNCTURES. A Hundred thousand tires sold last year. DESCRIPTION: Made in all sizes, is riding, very durable and easy to repair. We have hundreds of letters from satisfied customers stating that their tires have not been punctured or worn in a whole season. They weigh no more than an ordinary tire, the puncture-resisting qualities being given by several layers of thin, specially prepared fabric on the tread. The regular price of these tires is \$10.00 per pair, but for advertising purposes we are making a special factory price of only \$4.00 per pair. All orders will be shipped C. O. D. on approval. You do not pay a cent until you receive and examine them. We will give you a bicycle and a pair of tires from our stock of bicycles and tires. We will also give you a bicycle and a pair of tires from our stock of bicycles and tires.