

OREGON CITY ENTERPRISE

The Enterprise is the only Clackamas County Newspaper that prints all of the news of this growing County.

Has your subscription expired? Look at it! You should not be without it. Oregon Historical Society.

FORTY-SIX YEAR—No. 49.

OREGON CITY, OREGON, FRIDAY, DECEMBER 13, 1912.

ESTABLISHED 1866

GOLDEN SPIKE "DRIVE" NEW ERA FOR COUNTY

THOUSANDS ATTEND BIG MEETING

NEW R. R. IS JOYOUSLY ACCLAIMED

GRANT B. DIMICK, H. E. CROSS, B. T. McBAIN, T. W. SULLIVAN AND OTHERS SPEAK AT GREAT CELEBRATION

With hundreds of people present, under favorable weather, with buildings decorated and bunting flying everywhere, the Golden Spike was driven in the Clackamas Southern Railway Tuesday afternoon by George A. Harding, one of the promoters of the road. Early in the day the streets were thronged with visitors who represented almost every city, village or hamlet on the line of the Clackamas Southern. At 1:30 o'clock the parade, headed by Dr. A. L. Beatie, grand marshal, and his aides, started from Third and Main Streets. A long



George A. Harding, one of "Golden Spike" Drivers.

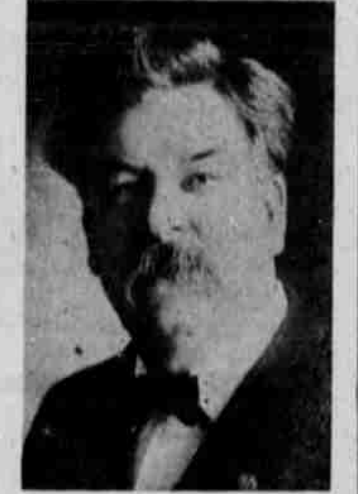
line of automobiles which was headed by the Oregon City Band, were followed by delegations from various cities along the Clackamas Southern. Probably Mount Angel and Molalla were the most conspicuous, the former having a banner which read, "We subscribed \$20,000 and can do better." The Molalla and Beaver Creek boosters handed out cards which were worn in the hats of many. An automobile with the orchestra of the Grand Theater followed. A delegation of fifteen officials of the Portland Railway, Light & Power Co. arrived at 1:15 on the special car "Portland."

Immediately after the parade disbanded at Fifteenth and Main Streets, the ceremonies incident to the actual driving of the Spike took place. Hundreds of persons quickly took up the desirable places while others couldn't secure places of advantage. The entire crowd was enthusiastic, cheering the speakers and Mr. Harding as he drove the Golden Spike. B. T. McBain, president of the Commercial Club, and one of the live boosters of Oregon City, presided at this meeting and also at the one at Busch's Hall.

Rev. C. W. Robinson delivered eloquently the following prayer:

"Does it seem incongruous to you who are gathered here today that I am asked to come, not merely to make an address, but my two brother priests, but in an official capacity to ask God's blessing upon a hard-headed business proposition. Some of you are already answering, 'It is a matter of diplomacy.' Others, 'It is a custom. It is more than either of these. It is a sign of the times. We have on the one hand throughout the world a great body of workmen called the Proletariat, struggling for Universal Justice and Brotherhood. On the other hand we have another large body of citizens, sometimes hating and sometimes hated by the Proletariat, called the Capitalists. Yet I believe that the best of each class is seeking for the same Universal Brotherhood. The rich man today is quite as much a slave, but in another direction, as the laboring man. This Universal Brotherhood that each is seeking can be found only in the recognition of a Universal Father. Today we ask that Universal Father, God Almighty, represented perfectly to mankind in His Son Jesus Christ, to bless this undertaking. It is this elder Brother of all men who alone has proved, and is daily proving, that He can draw all men into Him as brothers in one great family. Whether good or bad, consciously or unconsciously, we are all working out that revolutionary evolution which must eventually make us all a great solidarity. And just as this railroad is piercing the heretofore untraveled forests, breaking down the barriers which separate village from village, so the Spirit of God is traversing the whole world, making us all realize that mankind is uniting. Happy will be the day when all ecclesiastic, religious, educational, and economic mountains have been leveled and the dismal valleys of sin, sickness, poverty, and crime have been filled eternally. You who know me may be surprised to hear me say that the great trust so-called are one of the many instruments God is using for this purpose.

Therefore I consider it a privilege to ask His blessing upon this new railroad. The Golden Spike is made of the metal which today separates man from man. We believe that of the rectitude of the officials of this new railroad that in its management there will be placed first, not the gold of



B. T. McBain, President of Commercial Club, one of principals in driving "Golden Spike."

this world, but the Golden Rule given us by the Crucified."

T. W. Sullivan, Main Trunk of the Live Wires, delivered the following address before striking the first blow on the Golden Spike:

"My fellow citizens and friends:—On behalf of our Honorable Mayor and the Live Wires of the Oregon City Commercial Club, it is a great pleasure to extend to you, one and all, a hearty welcome. We have come here today to celebrate an event which I sincerely hope and believe will mark the beginning of a wonderful progress and development of an important section of our county and state directly tributary to this fair city. That this development will necessarily be of great benefit to us and will increase the wealth and prosperity of Oregon City must be admitted by all.

The Clackamas Southern Railroad is an enterprise that deserves well of all the people in the district through which its line has been laid, extending from Oregon City through Beaver Creek, Mulino, Liberal, Molalla, the Yoder Country, Monitor and on to Mount Angel, supplying the much needed means of direct communication, easy access and cheap transportation between these different places and to and from the outside markets. It will also provide the shortest and most economical route, via this city, to the metropolis of our state, for the transportation of passengers, farm produce and other materials. There have in the past been questions raised as to the wisdom of this undertaking and its soundness as a business investment. In my judgment, and I have been through the country to be traversed by the Clackamas Southern, there is a great need for this railroad and it should be put in the productive class without further delay by the united efforts and cooperation of the people of this city, the county, villages and cities through which it will pass and serve.

The present conditions of development and the great undeveloped resources of the section of our state to be served are such that with good practical and economical management, this road should pay from the beginning of its operation.

Take notice of what has been done by the Oregon Electric, which was built but a short time ago through a similarly partly developed section of country which was better served than this section and with sharper competition from another road because of the close proximity of the lines—yet, my friends, the public reports of the business done and earnings made by the Oregon Electric have been very flattering indeed and such earnings are growing fast with the increasing development and population of its territory, due to the service it insures. There is room and need for this railroad and for the railroad which is here. We need them all. There is no danger of getting more than is good for us and the country. Their advent here means rapid development of the country, increased progress and prosperity for all in both city and country.

About twenty years ago, when Mayor of this city, I had the honor of driving the "Golden Spike" which marked the completion of the East Side Railway, from Portland to Third Street in this city. This is the railway now owned and operated by the Portland Railway, Light & Power Company. That railway has been and now is a very important and beneficial factor in developing and up-building this community and the rural districts between this city and Portland.

The Clackamas Southern is purely a home enterprise. It is being built by some of our own people. These people are public benefactors in this community. Those who are able should join in the good work and give financial support and all should give it strong moral support to the end that the road will be completed without any more wasteful delay. By doing this we will show that we are energetic and enterprising, and outside people will come to know that this is a good community to live in.

(Continued on page 4)

WORK STARTS ON SPECIAL EDITION

MORNING ENTERPRISE TO ISSUE ANNIVERSARY NUMBER IN JANUARY

LAST YEAR'S RECORD TO BE ECLIPSED

W. H. Dixon, Who Had Charge of Previous Progress Edition, Is Engaged to Prepare Fortnightly One

Active work has begun on the compilation of the Progress and Anniversary number of the Morning Enterprise and the big magazine will be in the hands of the readers about the middle of January, as usual. Although the Enterprise has made a practice of issuing an annual special number for several years past the paper expects its forthcoming annual to eclipse all former efforts.

To those who will stop and consider the class and character of our 68-page Progress Edition issued in January 1912, this statement will have a definite meaning—it means that to improve upon that issue the paper will have to do some very "classy" work indeed. From every standpoint the 1912 annual was the best that has ever been issued by this paper, and never deviating from the facts in the slightest degree it may also be said that nothing more complete and attractive has been published by any daily in the state.

The Enterprise was the recipient of hundreds of expressions of commendation regarding the last annual issue, not only from local residents, but from the metropolitan press of the state and many others who know and appreciate a worthy sample of the printers' art when they see it.

Many thousands of copies of that issue were mailed to points outside the state and that it did much good in exploiting the resources and opportunities of Clackamas County goes without saying.

As was the previous number our forthcoming annual will be printed in magazine form on fine book paper and well illustrated throughout. Instead of an embossed cover a handsome two or three color cover design will be used and there will be numerous other improvements.

Oregon City and all Clackamas County have made substantial progress in the twelve months now drawing to a close and every feature of that progress will be fittingly portrayed in this number, together with a comprehensive resume of general conditions past and present in all the important industries centering in this county.

The Enterprise proposes to do all in its power to give those who participate in this special number, and by their cooperation and patronage make it possible for so high class an effective medium of community publicity to be published, the same degree of satisfaction that was given our patrons last year. To this end we have employed W. H. Dixon, who had charge of compiling the 1912 annual, to do the same work this year and the Enterprise feels entirely safe in saying that every material representation made by him to the public will be carried out.

LAZELLE TO ASSIST PUBLICITY WORK

The Oregon City Commercial Club's publicity committee at a meeting Thursday appointed M. J. Lazelle to act as secretary during the absence of O. E. Freytag who has charge of the Oregon exhibit, now at the Chicago Land Show. Mr. Freytag will return about Christmas.

EX-CONVICT ESCAPES DOWN EMBANKMENT

Edward Losingnott, escaped convict from the Washington penitentiary at Walla Walla, made a sensational leap for his life Wednesday afternoon, when Ex-Superintendent of the Oregon Penitentiary, F. H. Curtis gave chase. The jump was made at Elevation and Jefferson Streets, over an embankment about twenty feet high. Mr. Curtis saw his man about 100 yards in front of him, and yelled to him to stop. He jumped, and Curtis fired at him. Apparently not hurt by his jump, Losingnott ran into a crowd of school children and then crawled between a milk wagon and escaped.

Mr. Curtis met the convict on the street Monday, and knew him as he had been a prisoner at Salem. He immediately wired the officials at Walla Walla, who instructed him to arrest the fugitive. Hearing that Losingnott was working at Jones' rock crusher, Curtis decided to go after him immediately. He took with him a negro named Clark, an ex-convict, to guide him to the crusher. The negro was in the lead and saw Losingnott several blocks ahead. Against Mr. Curtis' wishes Clark hurried on and spoke to Losingnott. As soon as the fugitive saw Curtis he ran, and though called upon to halt, he did not heed the commands of Curtis. Mr. Curtis is continuing the search for the man, being assisted by Chief of Police Shaw and others.

SANDY TO CELEBRATE RAILWAY BUILDING

Sandy expects to welcome the advent of the Multnomah Central Railroad May 1. The right of way from Cottrell, six and one half miles, to Sandy has been cleared and grading will begin in a short time. Twochy Bros. have the contract for grading and construction and, with their equipment, could do the work in 90 days but expect to be delayed somewhat by inclement weather.

E. D. Ernberger, president of the company, said a few days ago that the first work to be undertaken would be the building of the bridge across the gulch just west of Sandy. The length of the structure, including the approaches, will be 1700 feet, requiring 21,000 feet of piling.

Sandy will have a depot building, which will be a duplicate of the one at Gresham. Other depots along the line will be uniform with those on the Mount Hood road.

Beyond Sandy as far as Cherryville all the right of way has been obtained except that running across six farms. Many of the settlers have donated the right to cross their property.

Cherryville is seven miles beyond Sandy and there is good assurance that the road will reach there next year.

4 Couples Get Licenses. Licenses to marry have been issued to Cornelia J. Aemele and Roy N. McIntyre; Mabel Grace Harrows and John D. McCreath; Gina Hagen and Louis Hagen and Grace Kollmyer and D. E. Holman.

COMMERCIAL CLUB TO BOOST HIGHWAY

BOARD OF GOVERNORS ADOPTS RESOLUTION PLEDGING SUPPORT OF MEMBERS

OTHER ORGANIZATIONS TO GIVE AID

Club Entitled to Forty-five Votes on Important Questions to Come Before Highway Commission

The entire membership of the Oregon City Commercial Club, comprising 225 of the business and professional men of the community, will become identified with the Pacific Highway Association, through a resolution adopted by the board of Governors Wednesday night.

The Pacific Highway traverses Clackamas County north and south, coming up the west side of the Willamette to Oregon City, crossing the suspension bridge and running on the east side of the Marlon County line.

While this is the first official recognition by any commercial organization in the Willamette Valley of the Pacific Highway, it is believed it will be followed by similar action on the part of Commercial Clubs of Salem, Eugene, Albany, Roseburg, Grants (Continued on page 4)

POULTRY SHOW TO BE JANUARY 3 AND 4

The Clackamas County Poultry Association will hold a poultry show January 3 and 4. Plans for the show were made at meeting which was held Thursday. M. J. Lazelle will have charge of it and will issue a premium list in a few days. A successful show was held last year, more than 400 birds having been entered. At least 600 birds are expected to be exhibited at the coming show.

The show will probably be held in the Armory and special attractions will be given. The officers of the Association are as follows: President, W. A. Shewman; Vice, president, George Hall; secretary-treasurer, M. J. Lazelle. Dr. M. C. Strickland and Elmer Dixon are members of the executive board.

MEN ACCUSED OF STEALING CALF HIDES ACQUITTED

E. B. Wood and A. N. Merrick, who were charged with stealing calf hides were found not guilty by Justice of the Peace Samson Monday. The complaining witness testified that "no money had been paid for the hides but several witnesses testified that they had seen the money paid.

Kelly Estate \$1,100.

Thomas W. Kelly has been appointed by County Judge Beattie administrator of the estate of Thomas E. Kelly. Mr. Kelly died November 2, 1912. His estate is valued at \$1,100.

BULL RUN WATER POSSIBILITY HERE

PORTLAND BOARD WOULD CONSIDER OFFER TO TAP PIPE AT GRAY'S CROSSING

OREGON CITY MAY TAKE UP PLAN

Annual Appearance of Typhoid Fever Leads to Belief that there Should Be Purer Water Supply

Sparkling Bull Run water is within reach of Oregon City, according to a report that reached Oregon City Thursday through a prominent local business man, who gave out the information that a high official of the Portland Water Board is willing to give favorable consideration to a plan to permit Oregon City to tap the Bull Run pipe line, at or near Gray's Crossing, about nine miles North of this city.

For a number of years past Oregon City has suffered from the effects of an annual typhoid fever scare, which has, at times, threatened to assume the proportions of an epidemic. Right at this time there are probably more than 50 cases of typhoid here, and while the majority of these are light cases, and no fatalities have so far resulted, the possibility of a more serious outbreak is not to be discounted. (Continued on page 3)



Make your Christmas Gifts Attractive at Our Expense

Regardless of the size or value of the gift itself, wrap it up in a neat paper, put on a few Xmas seals and Xmas stamps, inclose a pretty gift card, and attach a fancy tag or express label. It is quite the thing to do—the practice is growing year by year. Besides, it adds a lot to the holiday sentiment. Perhaps you have noticed these "fancy fixings" in the stores and found them "too expensive." If not, price them now. Then you will fully appreciate this liberal offer.

A 226-Piece Assortment Free To Every Subscriber

Each piece is distinctly designed and colored, beautifully embossed on fine white stock and fully equal in appearance and quality to the "very best" subjects offered in the stores at "those high prices." Here is a comprehensive assortment, variety to meet every want and large enough for the whole family's use. It contains:

- 6 Large Cards
- 8 Medium Cards
- 10 Small Cards
- 25 Large Seals
- 10 "Do Not Open" Stickers
- 50 Medium Seals
- 15 Small Seals
- 16 Stamps
- 2 Christmas Folders
- 10 "Merry Christmas" Stickers
- 15 Post Cards
- 6 Large Tags
- 8 Medium Tags
- 10 Small Tags

We have tried to realize every want of our readers in this assortment—to make it complete and of the best quality. We have given a great deal of thought to a balanced variety, even including Xmas Post Cards, so that you may "remember" those to whom you will send gifts. It is with great satisfaction that we offer this assortment to our readers, realizing that not only the quantity but the quality will favorably impress every recipient—that every one who receives this package will be more than satisfied.

The Weekly Inter Ocean and Farmer

Is the only weekly published by a great Chicago Daily. Thus the special advantages in securing and printing important world's news are clearly obvious. From both THE DAILY and THE SUNDAY editions of THE INTER OCEAN, which is acknowledged to be the ablest edited publication in the West, the cream of editorial thought has been selected for THE WEEKLY INTER OCEAN AND FARMER. When you add the special features of its own various attractive departments you will realize and appreciate the big money's worth given in each issue of THE WEEKLY INTER OCEAN AND FARMER at its regular subscription price of \$1 a year.

Farm and Home

Is published twice a month, 24 issues a year, of from 16 to 48 large pages; check-full of information and suggestions which you will find nowhere else. It deals with everything of interest to the Housekeeper, Farmer, Gardener, Fruit Grower, Dairyman, Live Stock and Poultry Keeper. Each issue has several special articles by well-known writers about the farm and how to make it pay. A year's subscription will include the big Poultry Annual issue, printed in February, which alone is worth the entire price of the whole year's subscription. Every one who has or ever expects to have poultry should be sure to get the Poultry Annual.

Our Big Christmas Subscription Bargain

Oregon City Enterprise (weekly), one year	\$1.50	ALL FOR ONLY \$1.50
The Weekly Inter Ocean and Farmer, one year	1.00	
Farm and Home, one year	.50	
Big (226-Piece) Xmas Package	.50	
Total Regular Price	\$3.50	

NOTE—If you are already a subscriber to any one of these publications your time will be extended one full year from the date of your present expiration.

Address all orders and make all remittances payable to
OREGON CITY ENTERPRISE Oregon City, Ore.