

OREGON CITY ENTERPRISE

Oregon Historical Society

You are invited to become a reader of the Enterprise 52 Times a Year for \$1.50 and Handsome Premiums offered.

The quantity and the quality of Clackamas County News can be found only in the Enterprise.

FORTY-SECOND YEAR—NO. 39.

OREGON CITY, OREGON, FRIDAY, SEPTEMBER 25, 1908.

ESTABLISHED 1866.

THREE DAYS FOR RACING

FINE CARD ARRANGED BY THE CLACKAMAS COUNTY FAIR OFFICIALS.

PURSES ARE LIBERAL

Premium List For Second Annual Exhibit is Out and Displays Scores of Attractive Features.

The premium list of the second annual Clackamas County Fair has been delivered by the printers to Secretary Gary and is ready for distribution.

First Day, October 1. Running race—Three-quarter mile dash, purse \$50. First, \$25; second, \$15; third, \$10.

Second Day, October 2. Running race—Half mile and repeat. Ramsby purse of \$50 with \$50 added by the Fair Association.

Third Day, October 3. Running race—Three-quarter mile dash, purse \$25. First, \$20; second, \$10; third, \$5.

MANY GRANGE FAIRS.

Milwaukee, Molalla and New Era to Celebrate This Week.

Three important fairs in Grange circles will be held this week at Milwaukee, Molalla and New Era.

The Molalla Grange annual fair will be an event of considerable importance in that section, and will be held all day next Saturday.

The Warner Grange Fair at New Era will also take place next Saturday, and the committee in charge is working vigorously to make the affair a success.

The Harding Grange Fair at Logan is set for Tuesday and Wednesday, October 6 and 7. This fair follows immediately after the Clackamas County second annual fair, which will be held at Canby Thursday, Friday and Saturday, October 1, 2 and 3.

Wayward Girl in Court. The 12-year old daughter of John Thomas, a Beaver Creek farmer, has been placed in care of her aunt, Mrs. C. E. Nash, of this city, and Thomas will be required to pay to County Clerk Greenman \$10 per month for the support of the child.

Mrs. Russell Sage, the widow of the celebrated financier, has presented to the Nation Constitution Island in the Hudson River, opposite West Point.

In historic interest it is intimately connected with West Point. It formed during the Revolution a part of the defense of the Hudson River.



Miss Nieta Harding, secretary of the Associated Student Body of the University of Oregon.

OREGON CITY AT THE FAIR.

Big Crowd Will Go to Canby Next Friday.

Next Friday will be Oregon City Day at the Clackamas County Fair, which opens next Thursday at Canby for a three days' session.

There is a possibility that a special train may be secured to bring the people of Oregon City home from Canby next Friday evening.

Late dispatches from Constantinople announce that the Sultan will renounce his ownership in the crown domains, allowing these properties to become a part of the public treasury.

One of the most substantial monuments in the country is that now being built at Provincetown, Mass., and known as the Pilgrim Memorial monument.

The wonderful operas of Wagner have always presented insurmountable obstacles to the stage manager in portraying in realistic fashion the effects that the composer strove for.

The Jewish stores of Oregon City will be closed this week from Friday at 6 p. m. until Saturday at 6 p. m. on account of the Jewish holidays.

The wonderful operas of Wagner have always presented insurmountable obstacles to the stage manager in portraying in realistic fashion the effects that the composer strove for.

The wonderful operas of Wagner have always presented insurmountable obstacles to the stage manager in portraying in realistic fashion the effects that the composer strove for.

The wonderful operas of Wagner have always presented insurmountable obstacles to the stage manager in portraying in realistic fashion the effects that the composer strove for.

REAL ESTATE VERY ACTIVE

DESIRABLE RESIDENCE PROPERTY AT OREGON CITY IS IN GREAT DEMAND.

INQUIRIES NUMEROUS

Several Examples Cited of Experiences on Small Fruit Farms, Which May be Duplicated in Clackamas.

Many of the real estate men of this city say that the real estate business has been quite active during the past few months, and daily inquiries are coming into these men for desirable property from people who are looking for locations in the Northwest.

R. G. Pierce, who with his wife, came to Oregon City in 1892, settled on their piece of property they purchased on Falls View, where Mrs. Pierce taught school the same year.

Another place near the city that is bringing good results by labor is that of Mrs. Anna G. Hayes, who resides near Gladstone.

Some of the best fruit and vegetables that are grown in the state are raised at Gladstone. The berries grown by Mrs. Anna S. Hayes were fine in quality, size, color and flavor.

The Jewish stores of Oregon City will be closed this week from Friday at 6 p. m. until Saturday at 6 p. m. on account of the Jewish holidays.

The wonderful operas of Wagner have always presented insurmountable obstacles to the stage manager in portraying in realistic fashion the effects that the composer strove for.

The wonderful operas of Wagner have always presented insurmountable obstacles to the stage manager in portraying in realistic fashion the effects that the composer strove for.

The wonderful operas of Wagner have always presented insurmountable obstacles to the stage manager in portraying in realistic fashion the effects that the composer strove for.

The wonderful operas of Wagner have always presented insurmountable obstacles to the stage manager in portraying in realistic fashion the effects that the composer strove for.

The wonderful operas of Wagner have always presented insurmountable obstacles to the stage manager in portraying in realistic fashion the effects that the composer strove for.

GOOD OPENING FOR A SMALL SAWMILL

OREGON CITY OFFERS FINE SITE AND MANY ADVANTAGES FOR INVESTMENT.

There is an opening at Oregon City for a sawmill. This was learned through the probability of the removal of the Oregon City Mill & Lumber Company's plant to California.

The school book dealers had a busy time of it Monday, when the city schools opened for the Fall term. The schools were crowded from early morning until late in the afternoon, and the throngs of boys and girls were handled in a rapid manner.

The enrollment of the opening day was 54, an increase of 42 over last year, and it is expected by the first of next week the attendance will reach 700 at least.

Hiram Percy Maxim, the inventor whose name is closely associated with modern innovations in firearms, now comes to the front with another novelty by which he promises to revolutionize modern warfare.

Former Resident Visits City. W. W. Taylor, of Pendleton, was in Oregon City Thursday for the first time since 1871, when he was a boy.

The best soil for the strawberry is a deep, strong sand loam, but any soil suited to the growth of ordinary field or garden crops may be trusted for successfully growing this crop.

"A friend is a balancing pole," said an athlete—a balancing pole without which it is impossible to walk safely the tight-rope of life.

"A friend is a jewel," said a pretty girl, "that shines brightest in the darkness of misfortune."

"A friend is a volume," said a journalist, "a volume of sympathy, bound in cloth as a rule, though in rare cases the binding may be of silk."

"A friend is a gold link," mused a jeweler, "in a chain of life."

"He is a plaster," said the physician, seated on the white beach, they talked of friendship.

"For the cuts of misfortune," "Like I," said the botanist, "the greater the rain the closer he clings."

ENROLLMENT IS GREATER

FIRST DAY'S ATTENDANCE AT CITY SCHOOLS SHOWS INCREASE OF 42.

MANY IN HIGH SCHOOL

Thirty-three Freshmen Are Entered and 13 Students in Tenth and Eleventh Grades Will Go Into Training Class.

The school book dealers had a busy time of it Monday, when the city schools opened for the Fall term. The schools were crowded from early morning until late in the afternoon, and the throngs of boys and girls were handled in a rapid manner.

The enrollment of the opening day was 54, an increase of 42 over last year, and it is expected by the first of next week the attendance will reach 700 at least.

The Barclay building is bright with new paint and all of the desks in both buildings have been scraped and re-varnished. The work of constructing the 4-room addition to the Eastham building is being pushed forward as rapidly as possible.

City Superintendent McKee on Tuesday made a change in the grade assignment of teachers, giving all of the seventh grade work to Miss Ida Mae Smith, and leaving Miss Daisy Spaulding in charge of the sixth grade work.

Mayor W. E. Carl, chairman of the Board of Directors, has presented the high school with a large geographical globe. The globe is a large one of English manufacture and is one of the finest ever seen in this city.

David Canfield has been appointed trustee officer of the city school district, and it will be his duty to look after all cases of truancy reported by the city superintendent.

The local high school this year will include the ninth, tenth and eleventh grades, and the twelfth grade will be added next year.

The course will be elective, but as many students go into teaching, it is very probable that a large number will elect upon this opportunity.

The local high school this year will include the ninth, tenth and eleventh grades, and the twelfth grade will be added next year.

The course will be elective, but as many students go into teaching, it is very probable that a large number will elect upon this opportunity.

The local high school this year will include the ninth, tenth and eleventh grades, and the twelfth grade will be added next year.

The course will be elective, but as many students go into teaching, it is very probable that a large number will elect upon this opportunity.



W. H. BAIR, who has been active in support of the Clackamas County Annual Fair at Canby.

a telephone installed in the Barclay building. The number is Main 1561. Pupils will not be called to the telephone except in cases of sickness, and teachers will be called only during the noon hour and at recess.

MOUNT PLEASANT RESUMES.

Two Teachers Employed—Attendance is Record Breaking.

The Mount Pleasant school is opened with the largest attendance in the history of this institution. The extra room that has been furnished this year is filled with students, and many more are expected to come when hot picking has been completed.

The ninth grade has been added this year, thus enabling children of the district to take up the studies in this grade, instead of requiring them to attend the city schools.

The course will be elective, but as many students go into teaching, it is very probable that a large number will elect upon this opportunity.

The local high school this year will include the ninth, tenth and eleventh grades, and the twelfth grade will be added next year.

The course will be elective, but as many students go into teaching, it is very probable that a large number will elect upon this opportunity.

The local high school this year will include the ninth, tenth and eleventh grades, and the twelfth grade will be added next year.

The course will be elective, but as many students go into teaching, it is very probable that a large number will elect upon this opportunity.

The local high school this year will include the ninth, tenth and eleventh grades, and the twelfth grade will be added next year.

The course will be elective, but as many students go into teaching, it is very probable that a large number will elect upon this opportunity.

The local high school this year will include the ninth, tenth and eleventh grades, and the twelfth grade will be added next year.

HEAVY FROST HITS COUNTY

VEGETATION ON LOW GROUND HAS SUFFERED IN MANY SECTIONS.

GARDENS FARE WORST

In Some Places Tomatoes, Corn, Beans Squash, Melons, and Late Potatoes Were Nearly all Destroyed.

The heavy frost of Tuesday night came with very little warning. On Tuesday evening about 5 o'clock the wind blew very cold and many of the more sure weather prophets foretold of frost.

This will cause a shortage in beans, tomatoes, melons, late corn and late potatoes. The ground was not only white all over the county early Wednesday morning, but the sun was up early and added greatly in the destruction of garden truck.

The live stock market will remain at its present status until about the first of November. The price of beef will no doubt raise a little later, and hogs will drop from one-half to one cent a pound.

WHOLESALE QUOTATIONS.

Vegetables, Fruits, Etc. CUCUMBERS—3c doz. STRING BEANS—3c lb. SUMMER SQUASH—20@25c doz. OREGON CABBAGE—40@90c doz. OREGON ONIONS—\$1.25 per cwt. BEETS—40c dozen bunches. TOMATOES—1-3c lb. CARROTS—40c doz. GREEN CORN—8c doz. CELERY—40c doz. CAULIFLOWER—40c doz. GREEN BEANS—3c lb. PEPPERS—8c doz. POTATOES—80c per sack. Fresh onions.....40c doz.

Butter and Eggs. BUTTER—Ranch, 50@60c; creamery, 55c roll. EGGS—27@28c doz. HONEY—12@13c frame. HONEY—Strained, 7c to 9c lb. Fresh Fruits. ITALIAN PRUNES—1c lb. APPLES—40@60c box. WATER MELON—1-1c lb. PEACHES—60@65c crate. CASABA—\$2.25 doz. MUSKIMELON—20@30c doz. GRAPES—50c crate.

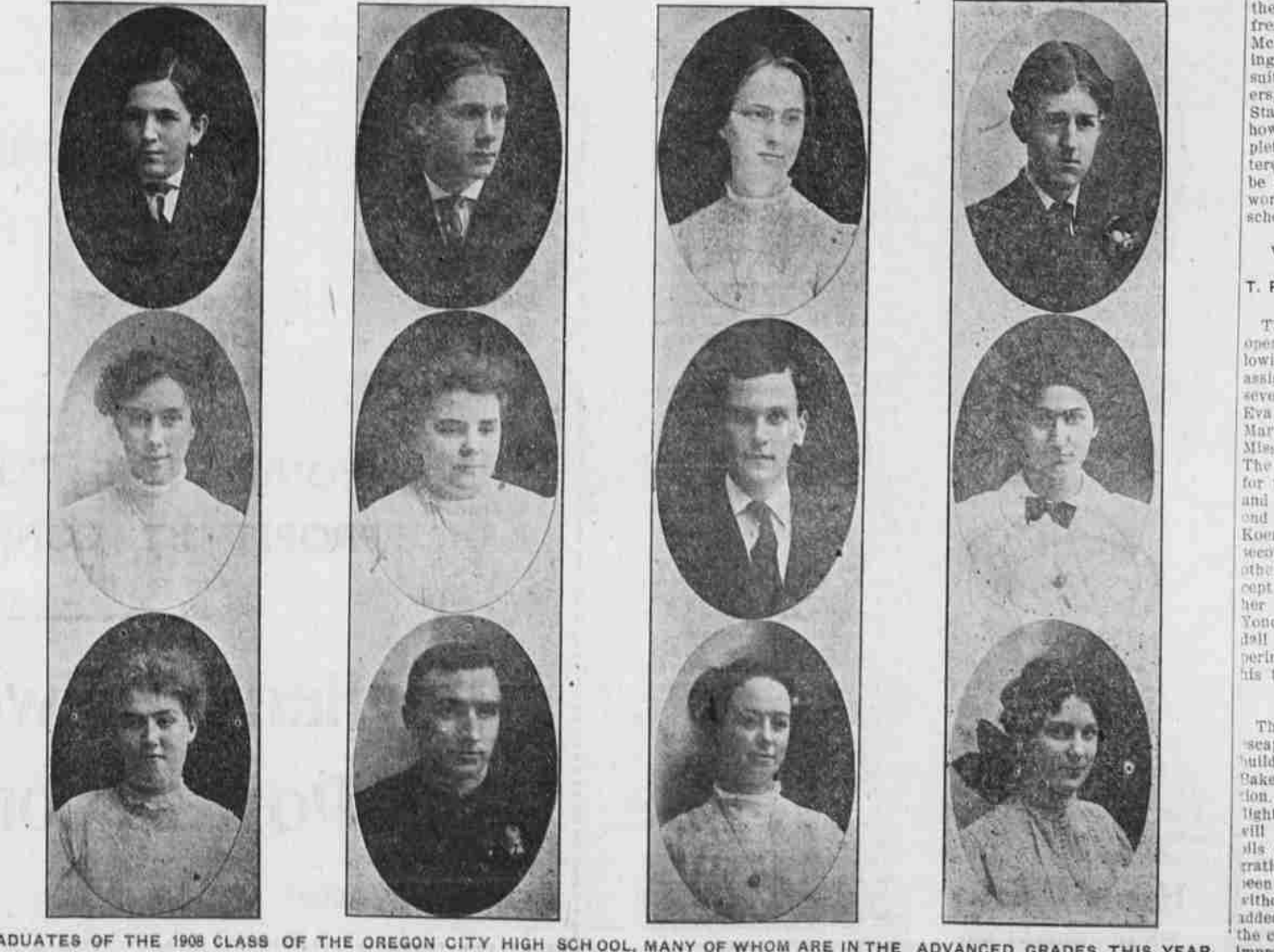
Dried Fruits. DRIED APPLES—Quartered, sundried, 5c; evaporated 6c to 7c; prunes, 3@4c; silver prunes 6c to 6 1/2c; pears 10c. Grain and Hay. WHEAT—\$7.90c. GRAY OATS—\$2.00@2.25. CATS—No 1 White \$2.67@2.75 per 100 pounds. HAY—Valley Timothy, \$14 per ton; Clover, \$8@10; Cheat \$11; Grain \$12; Clackamas County Live Stock.

Live Stock. HIFERS—\$3.00. STEERS—\$3.25@3.50. LAMBS—\$3.00@3.75. COWS—\$2.50@3.25. HOGS—\$5.00@5.00. MUTTON—\$2.00@3.50. HAMS—BACON—15c to 18c. DRESSED VEAL—\$8.00. DRESSED PORK—\$8.00. Poultry. OLD HENS—12c per pound, young roosters 12@14c; old roosters, 8c; mixed, chickens, 11c.

AT THE MILLS AND STORES. FLOUR—Pat. hard wheat, \$5.15; Valley flour, \$4.50; graham, \$4.40; whole wheat, \$4.60. MILLSTUFFS—Bran, \$29.00; middlings, \$33.00; shorts, \$32.00; grain, chopp, \$31.

Dairying Conditions. If the dairy is not paying look well to the condition of things at home. See if the feeding is done as cheaply and economically as it should be. See if there is not an old cow that is consuming the profit of three or four others in the yard.

A Horse's Toenails. Few persons realize that a horse's hoof is really the same thing as the toe nails of human beings or of animals having hoofs. The horn of a hoof grows just as a toenail does.



GRADUATES OF THE 1908 CLASS OF THE OREGON CITY HIGH SCHOOL, MANY OF WHOM ARE IN THE ADVANCED GRADES THIS YEAR.