

THE VOTE IN CLACKAMAS COUNTY--Compiled from Private Information.

Table showing election results for Clackamas County, listing precincts and candidates across various parties like Republican, Democrat, Prohibition, Regular Peoples, and Social Democrat.

Damascus gave a republican majority of 15; Eagle Creek, 22; Marquam, 26.

GREAT CITIES OF THE COUNTRY.

Table listing 259 American cities with over 25,000 population, including Lincoln, Brockton, and Birmingham, with columns for population and increase.

Table listing various cities and their populations, including New York, Chicago, Philadelphia, and many others, with columns for city name and population.

The State of Oregon by Counties

Table showing population and increase for various Oregon counties, including Baker, Benton, Clackamas, and others.

Including estimates for unreported precincts.

Rock Island gave McKinley every vote it possessed, and doubled its number of votes over four years ago at that--it cast two votes. Israel Putman and son are the only inhabitants, both being staunch republicans.

His Life Was Saved.

Mr. J. E. Lilly, a prominent citizen of Hannibal, Mo., lately had a wonderful deliverance from a frightful death. In telling of it he says: "I was taken with Typhoid Fever, that ran into Pneumonia My lungs became hardened. I was so weak I could not even sit up in bed. Nothing helped me. I expected to soon die of Consumption, when I heard of Dr. King's New Discovery. One bottle gave great relief. I continued to use it, and now am well and strong. I can't say too much in its praise."

Letter List.

The following is the list of letters remaining in the postoffice at Oregon City, Ore., on Nov. 8, 1900:

- WOMEN'S LIST: Coleson, Miss Millie Mathis Jessie L. Cooper, Mrs Hattie Moore, Mrs M O Gibson, Miss Nettie Sievers, Ronella Kirk, Miss Alice Sturderant, Margie... MEN'S LIST: Albright, John B Norton, A Chapman, O A Perchelle, George Dix, C P Raw, F W Etterson, Mr Wright, Samy (2) Lengle, Monroe (2) Schweitzer, Frank Wagner, T J GEO. F. HORTON, P. M.

City Council.

The following business was transacted at a regular monthly meeting held Wednesday, November 7: Saloon license granted E. Matthias. A communication from the water commissioners asking that the superintendent of streets and sewers act in conjunction with the superintendent of water works to place faucets on the supply pipes of all flush tanks to regulate water supply, was referred to the committee on pipe and water to act. Bond of T. L. Charman as water commissioner was approved. Petitions asking that the wages of street labor be increased from \$1.50 to \$1.75 per day was granted. The petition of Wm Beilmore praying for \$250 for injuries sustained by a fall upon a defective street was referred to the committee on streets. A warrant was ordered drawn upon the city in favor of the county to be used in improving the Vosberg hill road. Recorder Curry was allowed \$15, Dye, Griffie and Huntley \$30 each for work on sewer assessment. Fairclough Bros. submitted a proposition to establish a commission house, provided they could obtain a desirable location. Council will allow them to erect a commission house on block 10 on North Main street. Council then adjourned to reconvene in special session tonight at 7.30.

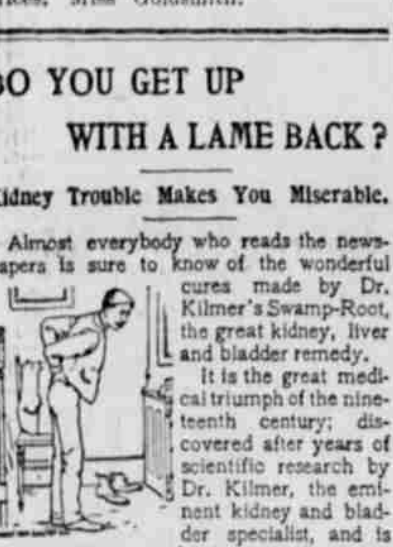
Attention Comrades.

Meade Post will meet at Willamette Hall on Saturday, Nov. 17th, at one o'clock P. M. All members are requested to attend as matters of interest will come before the meeting. By order of post commander.

Do not get scared if your heart troubles you. Most likely you suffer from indigestion. Kodol dyspepsia cure digests what you eat and gives the worn out stomach perfect rest. It is the only preparation known that completely digests all classes of foods; that is why it cures the worst cases of indigestion and stomach trouble after everything else has failed. It may be taken in all conditions and cannot help but do you good. G. A. Harding.

DO YOU GET UP WITH A LAME BACK?

Kidney Trouble Makes You Miserable. Almost everybody who reads the newspaper is sure to know of the wonderful cures made by Dr. Kilmer's Swamp-Root, the great kidney, liver and bladder remedy.



It is the great medical triumph of the nineteenth century; discovered after years of scientific research by Dr. Kilmer, the eminent kidney and bladder specialist, and is wonderfully successful in promptly curing lame back, kidney, bladder, uric acid troubles and Bright's Disease, which is the worst form of kidney trouble. Dr. Kilmer's Swamp-Root is not recommended for everything but if you have kidney, liver or bladder trouble it will be found just the remedy you need. It has been tested in so many ways, in hospital work, in private practice, among the helpless too poor to purchase relief and has proved so successful in every case that a special arrangement has been made by which all readers of this paper who have not already tried it, may have a sample bottle sent free by mail, also a book telling more about Swamp-Root and how to find out if you have kidney or bladder trouble. When writing mention reading this generous offer in this paper and send your address to Dr. Kilmer & Co., Birmingham, N. Y. The regular fifty cent and dollar sizes are sold by all good druggists.

A Personal Matter

A well painted house is like a neatly dressed person--always attractive and pleasant to look upon.

YOUR HOUSE

Can be repainted and freshened up at a very reasonable price--paints are very cheap now. Don't leave it until the sun makes any more marks and cracks in it.

Leave Orders at Ely's Store.

MURROW The Painter

Notice to Water Consumers and Property Owners

At a meeting of the Board of Water Commissioners on September 29th, ult., the following change in monthly water rates was made To take effect on and after January 1, 1901.

- Automatic Closing Flush Tank Closets, private - - - 25c. Automatic Closing Flush Tank Closets, public - - - 50c. ALL OTHER CLOSETS - - - \$1.00.

These rates apply where water is used for other service. In order to get the benefit of the above rates a change of fixture as indicated above must be made by the date mentioned. By order of the board. T. L. CHARMAN, Sec'y. Oregon City, Or., Oct. 10, 1900.

The latest styles it trimmed hats and prices the best.

Miss Goldsmith. Wedding stationery, the latest styles and finest assortment ever brought to Oregon City at the Evergreens

I Have For Sale the wonderful Richards Magic Stamping Pad, any child can do your stamping. Miss Goldsmith.

Schatz, the harnessmaker, opposite the Electric hotel, keeps a full line of harness and saddles of the best make, and does repairing promptly and in a workmanlike manner. Prices reasonable.



YOUR RESPONSIBILITY ENDS AND OURS BEGINS

When you buy goods at our store, for our guarantee goes with every purchase, whether it costs little or much. Complete stock of Groceries, fresh Bread, Buns, Cakes, etc., always in stock. You leave your order; we do the rest.

HEINZ & CO.

50 YEARS' EXPERIENCE. TRADE MARKS DESIGNS COPYRIGHTS & C.

PATENTS

Anyone sending a sketch and description may quickly ascertain our opinion free whether an invention is probably patentable. Communications strictly confidential. Handbook on Patents sent free. Oldest agency for securing patents. Patents taken through Munn & Co. receive special notice, without charge, in the Scientific American.

A handsomely illustrated weekly. Largest circulation of any scientific journal. Terms, \$3 a year, four months, \$1. Sold by all newsdealers. MUNN & Co. 361 Broadway, New York Branch Office, 25 F. St., Washington, D. C.

E. I. SIAS DEALER IN

Watches, Clocks, Jewelry and Spectacles. All kinds of repairing neatly done and warranted. Postoffice Bldg. Canby, Oregon

Oregon Short Line R.R.

The Direct Route to Montana, Utah, Colorado and all Eastern Points. Gives choice of two favorite routes, via the UNION PACIFIC Fast Mail Line, or the RIO GRANDE Scenic Lines. No Change of Cars. on the Portland-Chicago Special, "the best in the West."

Equipped with Elegant Standard Sleepers Fine New Ordinary (Tourist) Sleepers Superb Library-Buffer Cars Splendid Dining (meals a la carte) Free Reclining Chair Cars. Comfortable Coaches and Smokers Entire Train Completely Vestibuled

For further information, apply to J. R. NAGAL, W. E. COMAN, Trav. Pass. Agt. Gen'l Agent 142 Third St., Portland, Or.

Regulator Line.

By the fast and commodious steamer

Regulator

Leaves Portland daily except Sunday at 7 a. m. This is the Great Scenic Route. All tourists admit that the scenery on the Middle Columbia is not excelled for beauty and grandeur in the United States. Full information by addressing or calling on J. S. BOOTH, Agent, Tel. 914. Portland, Or. Office and wharf, foot of Oak St.

EAST AND SOUTH

VIA THE SHASTA ROUTE

SOUTHERN PACIFIC COMPANY.

Trains leave Oregon City for Portland and way stations at 5:24 A. M. and 6:01 P. M.

Table showing train schedules for Oregon City to Portland and way stations.

Table showing train schedules for Oregon City to Los Angeles and other destinations.

Connection at San Francisco with several steamship lines for Honolulu, Japan, China, Philippines, Central and South America.

See Mr. E. K. Hoopengardner agent at Oregon City station or address R. KOEHLER, G. H. MARKHAM, Manager, G. F. & P. Agent, Portland, Oregon

FOR CLATSKANIE

Steamer G. W. Shaver, LEAVES

Portland foot of Washington street Mondays and Thursdays at 6 a. m. Return leaves Clatskanie on Tuesdays and Fridays at 4 o'clock a. m. This is the nearest and most direct route to the great Nehalem valley.

Shaver Transportation Co

O.R.&N.

DEPART TIME SCHEDULES ARRIVE

Table showing train schedules for O.R.&N. including Chicago, Portland, Salt Lake, Denver, etc.

Table showing train schedules for O.R.&N. including Spokane, Salt Lake, Denver, etc.

Table showing train schedules for O.R.&N. including Atlantic Express, Walla Walla, Lewiston, etc.

Table showing train schedules for O.R.&N. including Ocean Steamships, All sailing dates subject to change.

Table showing train schedules for O.R.&N. including Daily Ex-Sunday, Columbia River Steamers, etc.

Table showing train schedules for O.R.&N. including Willamette River, Oregon City, Newberg, etc.

Table showing train schedules for O.R.&N. including Willamette and Yamhill Rivers, Oregon City, Dayton, etc.

Table showing train schedules for O.R.&N. including Willamette River, Portland to Corvallis and Way-Landings, etc.

Table showing train schedules for O.R.&N. including Snake River, Riparia to Lewiston, etc.

W. H. HURLBURT, Gen. Pass. Agent, Portland Or

SCHEDULES OF TIME

SOUTHERN PACIFIC RAILWAY

SOUTH BOUND. Train No. 11 9:22 a. m. " " 13 4:50 p. m. " " 15 9:14 p. m.

NORTH BOUND. Train No. 16 " " 14 " " 12 " " 10

POSTAL SCHEDULE.

BY SOUTHERN PACIFIC RAILROAD. Mail closes going North 5:30 p. m. and 7:45 p. m. Mail closes going South 8:32 a. m. and 7:22 p. m.

BY EAST SIDE ELECTRIC LINE. Mail closes for Portland and distributing points, 12 m. Mail closes for Milwaukie and Sellwood 9 a. m. Mail arrives from Portland 1:30 p. m.

SIDE ROUTES.

Oregon City to Ely, Carns, Mullins, Liberal and Molalla leaves at 12 m. and arrives at 1:30 a. m. daily. Oregon City to Beaver Creek, Stubbins, Clark, Meadow Brook, Union Mills and Colton leaves at 8 a. m. Tuesday, Thursday and Saturday, and returns on following days at 4:35 p. m. Oregon City to Viola, Logan and Redland leaves Oregon City Monday, Wednesday and Friday at 1 p. m., leaving Viola same days at 7 a. m. Oregon City to Willamette, Stafford, Wilsonville and Graeme arrives at 10:55 a. m. and leaves at 11:30 a. m. daily. General delivery window is open on Sunday from 10 to 11 a. m. All letters dropped into the box at the door is promptly sent off Sunday as on other days.