

PUBLIC RECOGNITION OF CHRISTMASTIDE INCREASES

The Christmas tree has long been regarded the symbol of Christmas. Many families, especially where there are children, would feel that Christmas was incomplete without a tree decorated with tinsel and candles. However, writes A. H. Pulver in the American Agriculturist, a new idea in regard to such trees seems to be creeping in, and that is the community Christmas tree, which is set up outdoors or in a public building where all people, both rich and poor, can admire and enjoy it, and it seems that this tree more truly reflects the unselfish spirit of Christmas.

The movement had its beginning in New York city, but regardless of its origin it is spreading rapidly, especially to the small cities and towns, where it serves to bring all people together and to develop a community spirit. In one city the tree has become a fixed annual event, and each year a large Norway spruce sometimes 50 feet high, is set up and decorated with colored electric bulbs, flags and other ornaments. For a few days preceding Christmas the bulbs are lighted, causing light to shine from a hundred or more places, and on the day before Christmas a Santa Claus with a pack of toys and candy, drives from home to home distributing joy to the children. On Christmas eve the children and parents gather around the tree and sing Christmas carols, winding up with our national anthem. Other towns vary the program somewhat, some of them having the tree in a public building where a Christmas party is held and Santa Claus gives out toys and candy to the children.

Why not Oregon City follow this growing custom?

FOR SALE—Fresh cow, with or without calf. Phone 27-F-24. 12-14-22

Gladstone School District To Vote On Bond Issue For Gymnasium

January 8th, a special meeting of the school electors has been called for the Gladstone district, for the purpose of voting on the proposal to issue bonds to the amount of \$3,500 for the purpose of purchasing ground and building a gymnasium. The gymnasium will be built in sections, the first section to be a play shed.

S. P. Improves Rolling Stock
The Southern Pacific has just taken delivery on the last consignment of 50 gigantic "2-10-2" type locomotives, representing an investment of \$4,000,000. They are being placed in freight service on mountain divisions.

The Pacific Fruit Express Company is receiving the final consignment of 3,300 new refrigerator cars it ordered for delivery early this year, but construction of which was delayed by unsettled industrial conditions in the east. With the completion of these and the 5,300 ordered for next year, the Pacific Fruit Express will have more than 27,000 cars for handling fruit and vegetables from the Pacific coast in 1923.

The Western Pacific will release Pacific Fruit Express cars, supplying some 2,000 of its own instead, thus giving a total of 30,000 cars where now 20,000 serve, or an increase of one-third.

William Engle.
On Thursday morning, at the family home in Molalla, occurred the death of William Engle, a lifetime resident of the community.

The deceased was born nearly sixty years ago at Molalla. His parents were Samuel and Nancy Engle. He is survived by his wife and daughter Bernice of Molalla; a son Albert, of Yamhill county; two brothers, D. and Albert, and three sisters, Mrs. Harless, Mrs. W. W. Everhart and Mrs. P. A. McFadden, all of Molalla.

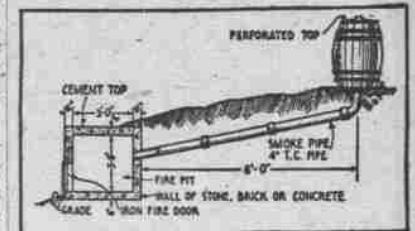
Mr. Engle was a granger and a member of the L. O. O. F. and Artisan lodges of Molalla, and a very highly respected member of the community.

FARM SMOKEHOUSE IS PAYING INVESTMENT

Where Hogs Are Kept It Will Prove Quite Profitable.

Cubical Fireplace Should Be Constructed of Cement and on Small Farms Ordinary Barrel Will Answer for Smoke Chamber.

Farmers who keep hogs will find that a smokehouse for curing hams, shoulders and bacon is a profitable investment. A hillside is the best location. The fireplace, a cubical space 3 feet long, 3 feet high, and 3 feet wide, should be made of cement from 4 to 6 inches thick. An iron door should be provided for introducing the fuel. Near the top of the chamber there should be an opening for a four-inch smoke-pipe leading upward to the smoke chamber, which on small



Every Farmer Should Build for Himself a Smokehouse Similar to This. farms may consist merely of a barrel or hoghead. A perforated cover should be provided for the barrel.

The pipe through which the smoke is conducted from the fire-pit to the curing house or barrel may be of cement, stoneware or terra cotta with a diameter of approximately 4 or 5 inches. The cost of the material is simple.

For fuel, green hickory, maple or any hardwood should be used; never pine wood or any wood that contains resin. The meat should be smoked from 36 to 48 hours, unless it is to be kept a long time, when the smoking should be continued much longer.—Popular Science Monthly.

GREAT SHOE SALE

Special for Women

Price Bros. DEPARTMENT STORE

Special for Men

The Quality Store of Clackamas County

WOMEN'S OXFORDS
Made of genuine Black Kid, Brown Kid and Patent Leather—With military heels, Goodyear welt, Reg. \$5.50 and \$6 per pair. SALE PRICE \$3.45

TWO STRAP SLIPPERS
Genuine black kid and patent leather two straps, with Goodyear welt and military heels. Regular \$5.50 and \$6 per pair. SALE PRICE \$3.45

WOMEN'S SHOES
Regular \$9.00 to \$12.00 French heel shoes. These are odd lines of shoes on which we are reducing stock and would be wonderful bargains at twice our price of \$1.95 While they last!

BLACK KID OXFORDS
The oxfords with the suspension arches: The ideal foot-fitting oxford for women with weak arches. Regular Price \$7.50. SALE \$5.45

The same oxford in Brown Kid: Regular \$8.00. SALE \$5.85

QUEEN QUALITY OXFORDS
Durable brown calf, black calf and patent leather standard Queen Quality oxfords, sold everywhere at \$5 per pair. SALE PRICE \$3.95

FLORSHEIM SHOES
A special lot of medium English toed Florsheims, a few with tops of colored kid leather, Regular \$10.00 per pair. SALE PRICE \$5.85

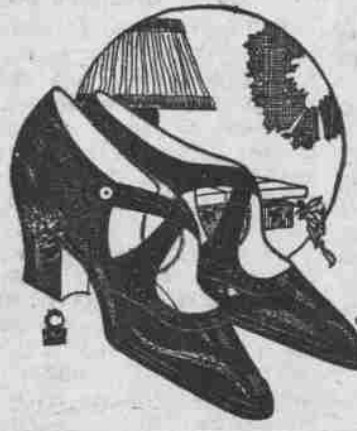
MEN'S SHOES
Made of good brown calfskin, with round toes, rubber heels, and Goodyear welts, SPECIAL SALE PRICE \$3.95

WORK SHOES
These are odd lines of good work shoes, all sizes in the lot, Per Pair, SALE PRICE \$2.45

Black and brown waterproofed chrome work shoes. An extra special sale price on these \$5.50 heavy work shoes \$3.65

MEN'S HI-CUT SHOES
Sixteen inch high cuts of genuine Paris Veal stock, Goodyear welt. Regular \$11 per pair, and the finest hi-cut of its kind on the market \$7.45 SALE PRICE

KNEE BOOTS
Extra quality black ebony U. S. Rubber Co. knee boots, \$6 grade, SALE PRICE \$3.75



Our Shoe Policy
1. We sell only shoes which will give service.
2. We fit the foot properly.
3. We operate with low overhead on a very small profit margin.
4. We feature the best national brands from a standpoint of quality, foot-fitting, price and style.



HI-CUT SHOES
For women and misses. Made of good-grade brown calf. In Misses' Sizes \$3.45 Women's Sizes \$3.95

BATH SLIPPERS
Odd lines of men's and women's slippers, an extraordinary sale value at our Sale Price .45

MEN'S LEGGINGS
Brown waterproof leggings, Regular 85c per pair, SALE PRICE .29

BOYS' HI-CUT AND HEAVY SHOES
A special sale discount of 20 per cent on every pair of these shoes in our stock.

WE MAKE A SPECIALTY OF FITTING NARROW WIDTHS AND GIVING FOOT COMFORT.

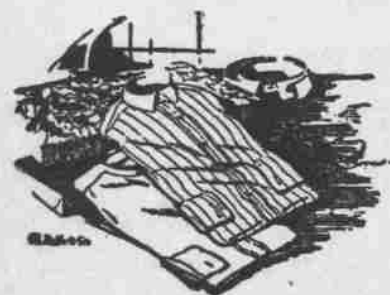
FELT SLIPPERS FOR CHRISTMAS
You will find at our store the greatest selection—we have bought good felts of all kinds and bought them to sell at the very lowest prices. Priced at 75c, \$1.15, \$1.25, \$1.40, \$1.50, \$1.75.

Gifts from a man's store for a man

THE experienced shopper knows that most men like to receive a Christmas Gift from the store that is known as the leading man's store in town, and therefore the logical place for dependable and desirable holiday merchandise.

You'll see lots of things here which will appeal to you as gifts for men, because of their usefulness and their moderate price.

Men Like to Receive Silk Shirts



Men like silk shirts, especially the rich, luxurious kind we show. Pussy willow taffeta silk shirts in solid hues of apricot, tan or grey; crepes and jersey silks in stripes and fancy designs. A big assortment, including broadcloth silk. At \$3.50 \$8.50

Madras and silk striped shirts \$1.50, \$2.00, \$3.00 and \$3.50.

A Large Array of Holiday Neckwear

Hundreds of beautiful silk or knitted ties. Regular dollar kind. 85c SPECIAL

A beautiful lot of pure silk ties. Regular \$1.15 Special \$1.65

highest grade. Truly wonderful designs. Special \$1.65

Gift Slippers are useful gifts. Well made slippers at \$1.50 and up

4 Pairs Sox, in a box, Fine lisle quality, 4 pairs \$1.00

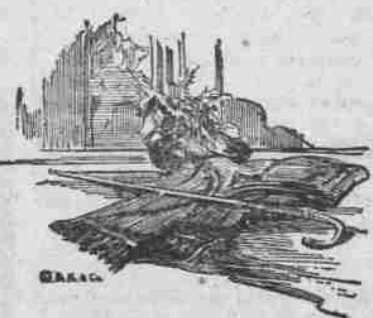
All Wool Sweaters—Thermo make. \$6 kind special \$4.95

Gift Suspenders—nicely boxed; fine quality. 75c

Garter and Arm Band Sets—A pretty but economical gift. 75c

Belts and Buckles—Nicely boxed; guaranteed to last. \$1.25 and up

Silk and Wool Sox—Fancy weaves; all sizes 65c to 85c



Silk Mufflers—In a varied selection. Priced from \$2.00 to \$4.50

JOE SWARTZ

OREGON CITY, Oregon Sixth and Main Streets

Impeachment Of Daugherty Backed By Federation Of Labor

At the opening of impeachment proceedings against United States Attorney General Daugherty, the atmosphere of the committee room became torrid with charges and countercharges between counsel for the American Federation of Labor and members of the judiciary committee in charge.

LESS TAXES CLAIMS SECRETARY OF STATE

Secretary of State Roger has declared that no less a sum than \$1,500,000 can be lopped off the state tax for next biennium. This is good news, which will set the taxpayers to wondering why this possibility has not been pressed upon them long, long ago.

Here is the proposition in the form of a possibility: Cut off appropriation for expense of fish and game commission, \$30,000; administration of world war veterans' state aid commission, \$120,000; administration industrial accident commission, \$200,000; reduce appropriations for advertising scenic attractions and for tourists' bureau, \$50,000; state road levy, \$250,000; levy for ex-service men's educational aid, \$525,000; appropriation for bureau of mines and geology, \$25,000; bounty on wild animals, \$110,000; further reductions, \$250,000.

"Jinxes" Were Numerous. A number of seafaring passengers aboard the Adriatic, which caught fire from an explosion on Thursday night, said yesterday that there was a number of signs attending the sailing of the ship which were construed as "jinxes" by the sailors. Among these were: The ship lost an anchor in the Mersey; Nearly hit the Holyhead-Dublin ferry; The birds refused to fly aboard the ship; And the explosion occurred very close to the spot where the Titanic went down in 1912.

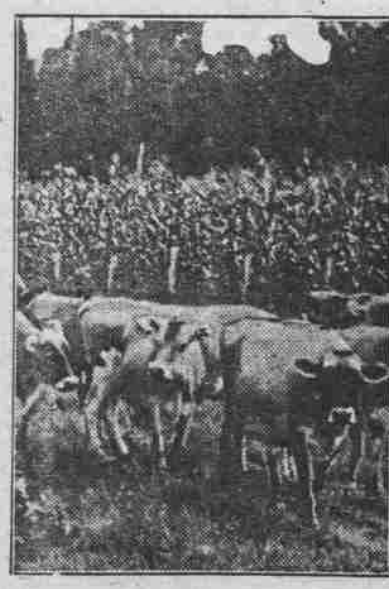
The story is being told of the elderly man who was nearly panic stricken and when asked jocularly what he was afraid to die for, said in a shaky voice, "I've been trimming people all my life!"—New York Sun.



PUREBRED FEMALES GAIN

Rapid Improvement of Live Stock Brought About by "Better Sires—Better Stock" Campaign.

(Prepared by the United States Department of Agriculture.)
When farmers adopt purebred sires to head their herds and flocks it is not long before the percentage of purebred females increases noticeably. This encouraging tendency toward more rapid improvement of live stock has been brought out by the United States Department of Agriculture in the "Better



Use of Purebred Females is on Rapid Increase.

Sires—Better Stock" campaign. Of a total of more than 300,000 female animals listed by farmers who have agreed to keep nothing but purebred sires, more than 35 per cent are of pure breeding. On these farms scrubs have practically disappeared. For the larger animals the reports show that only 24 per cent of the females are scrubs and, of course, the males are of pure blood as that is the basis on which the farms are listed.
The poultry flocks owned by these farmers are particularly well bred, only 1-3 per cent of the female birds

being listed as scrubs. More than 65 per cent of a total of 610,000 birds are entered on the list as standard-bred. Among the herds of swine there are very few scrub sows—only 1.1 per cent. Nearly two-thirds of them are purebred.

This federal-state effort to improve the live stock and poultry of the country has now brought in a membership campaign that represents nearly a million head of animals and poultry. Farmers who have become members have sent in interesting accounts of their experiences in improving their animals and their bank accounts. Other farmers who are taking part in the work are invited by the department to send in their individual experiences as well as those of community organizations engaged in the improvement of live stock. Definite facts and figures should be included whenever possible.

Big Disease Factors

Dirty cows, stables and utensils are the prime factors in distribution of pathogenic or disease producing organisms through milk. There are few dairy herds in which there is not a case or two of garget each year. In every case investigated during an Illinois survey the milk from cows having garget contained germs which cause stomach and intestinal diseases and general sickness.
Garget or mammitis is almost invariably induced by infections of the urinary tract and uterus. When a cow lies down in dirty stables and barnyards her udder rests on the ground and the germs become lodged in the teat openings where they multiply rapidly.

RIGHT FEEDING FOR CALVES

Number of Times a Day Varies With Different Dairymen—Temperature is Important.

The number of times a day to feed the calf varies with the different dairymen. For the first three or four weeks some men feed the calves three times a day. This is an excellent practice, but many do not give proper attention to the temperature of the milk, particularly at noon. This milk is often given cold and it would be

far better to feed only twice a day and have the milk at proper temperature than to feed three times a day and have noon milk cold.

Value of Protein Feed.
Realizing the value of more protein in the feed mixture for dairy cows, more dairymen than ever before, says L. V. Wilson, dairy specialist, are putting in some soy beans with their silage corn or are sowing the beans for an emergency hay crop.

BASS ALWAYS A WANDERER

Fish Has No Special Abode, but Seeks Places Where Food is the Most Plentiful.

The bass, both large and small-mouthed, is a roamer. He is always looking for the place where the most food is, and is fond of variety. You can fish for him night or day, as he is a 24-hour feeder, but early morning and late afternoon are the surest times to get him right.
He is an active rogue, and continually rising from the bottom to the surface, at times jumping above the water in pursuit of food. He changes his home and feeding ground as the season passes. In the spring he is found in shallow water in streams and rivers, below rapids and riffles, and as the water warms up he moves to deep pools sheltered by logs, weeds or ledges. During the summer, he migrates to greater depths, where the water is cool.
The same is true of the lake bass. In the spring he frequents the shallow places, but later he goes into the weeds and lily pads. The small-mouth bass favors stony bars or shoals varying in depth from 2 to 40 or 50 feet, while the large-mouth prefers weeds and muddy bottoms.

Mars Green as Well as Red.

A few weeks ago we mentioned that an English astronomer had gone to Tenerife to make observations of Mars during the planet's nearest approach to the earth for the past 13 years. Mr. P. Ryves recently sent the following message to a London paper: "My instruments have been installed at Isana at an altitude of 8,000 feet. The sky is cloudless.
"Mars has been observed at about the time of its least distance from the earth. Snow around both planet's poles is abundant. The south temperate regions are dark and pronouncedly greenish."