

CASTORIA

For Infants and Children.

The Kind You Have Always Bought Bears the Signature of *Dr. J. C. Hatherton*

In Use For Over Thirty Years

CASTORIA

900 DROPS

ALCOHOL 3 PER CENT.

Promotes Digestion, Cheerfulness and Rest. Contains neither Opium, Morphine nor Mineral. NOT NARCOTIC.

Facsimile Signature of *Dr. J. C. Hatherton* NEW YORK.

At 6 months old 35 DROPS - 35 CENTS

Guaranteed under the Food and Drug Law of 1906.

SEMI-ANNUAL REPORT OF THE COUNTY CLERK OF CLACKAMAS COUNTY, OREGON.

Showing the amount of claims allowed, on what account, the amount of warrants drawn, and the amount of warrants outstanding and unpaid on the 30th day of September, 1913.

General Fund.	
County Court and Commissioners	\$ 1,019.15
Circuit Court and Jurors	3,628.05
Juvenile Court	214.83
Justice of the Peace	1,698.00
Sheriff's Office	2,701.13
Tax Department	1,078.30
Clerk's Office	2,435.45
County Recorder's Office	2,283.70
Treasurer's Office	779.98
Coroner's Office	268.00
Superintendent of Schools and Supervisors	2,891.37
Assessor's Office	3,320.02
Surveyor's Office	1,065.98
County Veterinarian	211.32
Fruit Inspector	137.05
Board of Health	668.28
Tax Rebate	211.73
Court House	1,812.02
Jail	719.70
Refund of Saloon Licenses	100.90
Indigent Soldier	256.50
Insane	130.85
Widow's Pension	1,601.92
County Poor	3,655.86
Forest Fires	256.68
Special Recall Election	2,496.35
Election, Registration, Supplies	1,045.87
Experting books of County	576.00
Printing and Advertising	3,214.25
Wild Animal Bounty	134.50
Road Damages	25.00
Armory Rent	150.00
Fair	38.70
Cruising Timber	32,146.32
Current Expense	535.55

Total, General Fund Warrants Issued \$ 73,144.38
Total, Regular Road Warrants Issued 103,877.00
Total, Special Road Warrants Issued 20,225.56

SEMI-ANNUAL STATEMENT

Showing the Financial condition of Clackamas County, Oregon, on the 30th day of September, 1913.

Liabilities.	
To General Fund Warrants drawn on the County Treasurer, and outstanding and unpaid	\$ 7,682.04
Interest accrued thereon	106.99
County Road Warrants, outstanding and unpaid	82,660.26
Estimated Interest accrued thereon	4,600.00
Total Liabilities	\$ 94,412.30

Resources.	
By Funds in hands of County Treasurer applicable to payment of General Fund Warrants	\$ 272.99
Funds in hand of County Treasurer applicable to payment of County Road Warrants	52,573.08
Total Resources	\$ 52,846.07

Net Indebtedness \$ 41,596.23
I, W. L. MULVEY, County Clerk of Clackamas County, Oregon, do hereby certify that the foregoing statement is true and correct.

IN WITNESS WHEREOF, I have hereunto set my hand and affixed the Seal of the County Clerk this 23 day of October, 1913.

(SEAL) W. L. MULVEY, County Clerk.

SEMI-ANNUAL STATEMENT.

Of the County Treasurer of Clackamas County, Oregon, for the six months ending on the 30th day of September, 1913, of money received and paid out, from whom received and what source, and on what account paid.

Special School Fund.	
To amount on hand from last report	\$ 49,893.74
To amounts received from Delinquent Tax	365.46
To amounts received from 1912 Tax	15,939.62
Amounts paid out from Special School Fund	\$ 66,198.72
Amounts paid out to correct error in Sheriff's Report	80,805.35
Balance on hand	5,280.21

Special City Fund	
To amount on hand from last report	\$ 5,762.82
To amounts received from Delinquent Tax	122.39
To amounts received from 1912 Tax	4,763.27
To amounts transferred from Special Roads to correct Sheriff's Report	6.10
Amounts paid out from Special City Fund	\$ 10,654.58
Balance on hand	3,043.29

General Fund.	
To amount on hand from last report	\$ 54,900.72
To amount received from Delinquent Tax	656.67
To amounts received from 1912 Tax	21,641.28
To amounts received from Fines and License	593.25
To amounts received from Wild Animal Bounties	168.25
To amounts received from advertising 1910 Tax	16.98
To amounts received from sale of stove	1.50
To amounts received from interest on Deposit in Milwaukee Bank	23.36
To amounts received from County Clerk's Fees	3,758.05
To amounts received from County Recorder's Fees	3,706.37
To amounts received from Sheriff's Fees	332.20
To amounts transferred from Soldiers' Fund	.98
To amounts transferred from County School to correct Sheriff's Report	1,942.93
County Warrants paid	\$ 87,741.64
Amounts paid out to Home for Feeble-minded	268.44
To amounts paid out to Thos. B. Kay, State Tax	19,826.09
Balance on hand	272.99
Total	\$ 87,741.64

County School Fund	
To amount on hand from last report	\$ 74,904.14
To amounts received from Delinquent Tax	347.27

To amounts received from 1912 Tax	15,997.19
County School Warrants paid	\$ 91,248.60
Error in Sheriff's Report	62,321.50
Balance on hand	1,942.93
Total	\$ 91,248.60

District Road Fund and Special Fund	
To amount on hand from last report	\$141,065.10
To amounts received from Delinquent Tax	998.44
To amounts received from 1912 Tax	44,668.39
To amounts received from U. S. Land Sales	298.87
To amounts received from overcharge on freight	3.55
To amounts received from Sale of Gravel	17.90
Transferred from Special School to correct Sheriff's Report	112.90
Correct error in Sheriff's Report	\$187,164.76
County Road Warrants paid	6.10
Balance on hand	134,583.58
Total	\$273,088.88

State School Fund	
To amount on hand from last report	\$ 11.16
To amounts received from Thos. B. Kay, For Schools	20,702.79
Balance on hand	\$ 20,713.95

Institute Fund	
To amount on hand from last report	\$ 171.02
Balance on hand	\$ 171.02

Indigent Soldier Fund	
To amount on hand from last report	\$.98
Transferred to General Fund	.98
Balance on hand	\$.98

County Fair Fund	
To amounts received from Ben W. Oleott for Fairs	\$ 1,708.40
Balance on hand	\$ 1,708.40
Total	\$ 1,708.40

STATE OF OREGON, County of Clackamas, ss.
I, J. A. TUFTS, do hereby certify that the foregoing is a true and correct statement of the amounts received, paid out and remaining on hand, in the County Treasury of said County for the six months ending on the 30th day of September, 1913.

Witness my hand this 2nd day of October, A. D. 1913.
J. A. TUFTS, County Treasurer.

SEMI-ANNUAL REPORT OF BUSINESS OF SHERIFF'S OFFICE, FROM APRIL 1st, 1913, to SEPTEMBER 30th, 1913.

Cash on hand April 1st, 1913	\$ 6,395.04
Delinquent Tax collections for years prior to 1912	1,960.47
Delinquent Tax Sales	3.91
Tax collections for current year	61,010.25
Penalty on same	1,230.15
Fees collected	342.20
Paid County Treasurer acct. tax collections	\$71,642.02
Paid County Treasurer acct. delinquent taxes	66,278.86
Paid County Treas. acct. fees	2,417.44
Cash on hand at close of business September 30th, 1913	2,609.52
Total	\$71,642.02

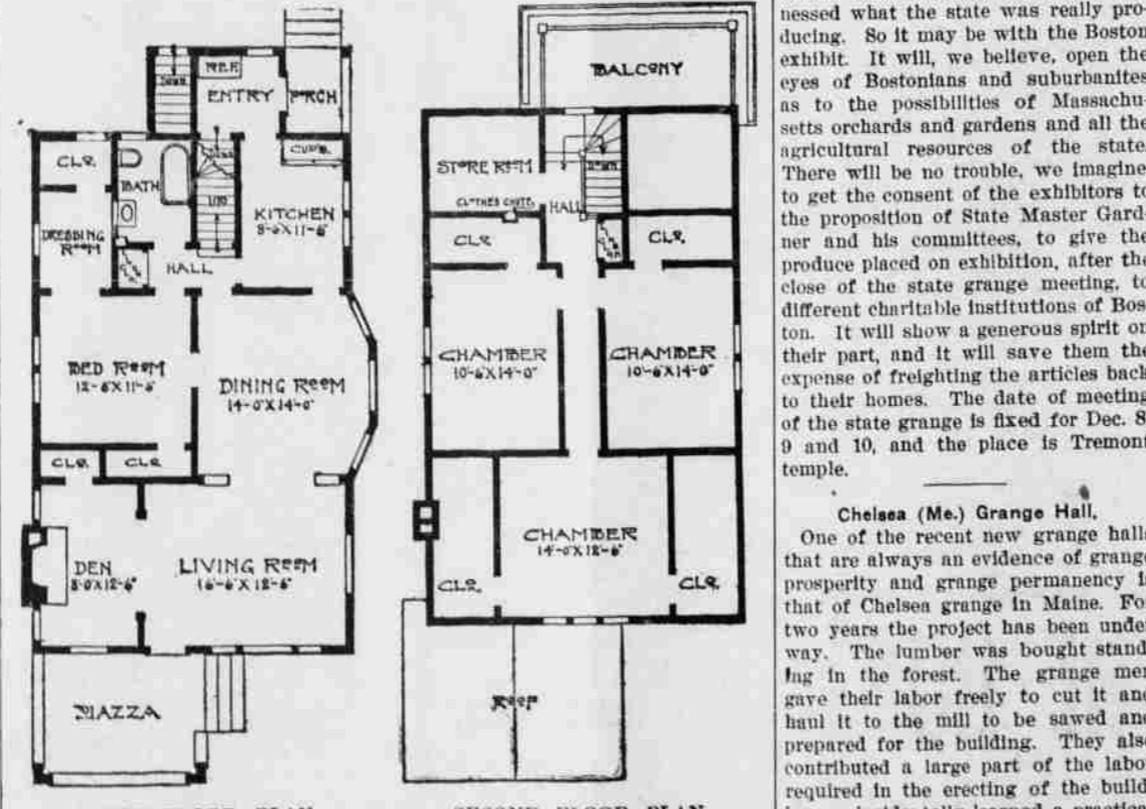
I hereby certify that the above report is correct.
E. T. MASS, Sheriff of Clackamas County, Oregon.

AN IDEAL TWO STORY BUNGALOW.

Design 751, by Glenn L. Saxton, Architect, Minneapolis, Minn.



PERSPECTIVE VIEW—FROM A PHOTOGRAPH.



This bungalow plan has a den and living room across the front. Could be made into one large living room if desired. There is a bedroom and bath in the first story connected with a dressing room or sewing room. Second story has three chambers. Full basement under entire house. First story, 9 feet; second story, 8 feet. Size, 26 feet wide and 40 feet deep over the main part. Finish in first story red oak or birch, pine to paint in second story. Birch or maple floors. Cost to build, exclusive of heating and plumbing, \$3,500.

Upon receipt of \$1 the publisher of this paper will supply a copy of Saxton's book of plans. "American Dwellings." It contains about 250 up to date designs of cottages, bungalows and residences costing from \$1,000 to \$6,000.

SAFEST LAXATIVE FOR WOMEN

Home-Keeping Women need Health and Strength

Nearly every woman needs a good laxative. Dr. King's New Life Pills are good because they are prompt, safe, and do not cause pain. Mrs. M. C. Dunlap of Leadville, Tenn., says: "Dr. King's New Life Pills helped her troubles greatly." Get a box to-day. Price, 25c. Recommended by Huntley Bros. Co.

MARKET REPORT

At the Union Stock Yards at Portland a large increase in both cattle and swine receipts has been noticeable the last few days, but sheep liquidation was much lighter. With the advent of sizable quantities of live stock the market became active and interesting. Monday's cattle receipts was one of the largest of the year and contained a lot of good beef. The \$3.00 steer top was not disturbed and a few choice lots brought 8.10, 8.15, and 8.25. Bulk of steer sales 7.30 and 7.70. Cow stuff never attained the 7c mark but a lot of good ones sold 6.75 and 6.85. Calves steady 8.50 to 9.00 and bulls 6.00 to 6.50. Beef outlook is better and absorbed over 1500 head this week.

The swine trade suffered a sudden set back and is in process of adjusting itself for the annual fall liquidation. Prices broke a quarter and best light hogs sold in bulk 8.75 to 9.00. Receipts were liberal, demand fair.

Sheep house business was more or less drab due to lack of supply of lambs and mutton and inferior quality of arrivals. Prices steadied Thursday and are in firmer position but only for strictly prime stock. Trade is easily filled up on mutton and too much at one time causes a price flurry. Choice wethers 4.00 to 4.25, ewes 3.50 to 3.85 and lambs 4.50 to 4.25 are steady price levels.

Peaches, that are of a large yield this year, were retailing at some of the local stores on Saturday for 35 and 45 cents per box, and were plentiful at that price. Those selling at 50 cents per box were of exceptionally good quality, and found a good demand.

Watermelons are slowly coming in to the market, but a large supply of musk melons and cantelopes are to be found.

Gravensteins are nearing the close of the season, and are retailing from 15 cents to \$1.00 per box.

Fruites are calling for 2 and a half cents per pound.

Vegetables are plentiful in the markets.

The following is the market report for the week:
EGGS—Oregon ranch 23c.
FEED—(Selling) Shorts \$28.00; bran \$25.00; process barley \$30.00 per ton.
FLOUR—\$4.40 to \$5.20.
HAY—(buying) Clover at \$9 and \$10; oat hay, best \$10 and 11; alfalfa, \$13.
OATS—\$27 to \$45; wheat \$1.00 bu., oil meal selling about \$45.

Live Stock—Meats
BEEF—(live wt.) Steers 6 and 7c; cows 5 and 5.1-2; bulls 4.1-2.
MUTTON—Sheep three to five and a half cents.
VEAL—Fancy 12c to 13c; medium 11 and 12 1/2 cents.
PORK—10 and 11 cents.
POULTRY—(buying) Ducks 12 1/2 and 15c; roosters 8 cents, hens 15 1/2c; geese 12 1/2 and 13c; turkeys 18c.
Sheep pelts—40 to 90c.
Hides—10 and 9c.

Fruits
Apples—60c to 90c.
DRIED FRUITS—(buying) Oregon prunes on basis 6c to 8c.
Dried pears 7c.
Butter
Larch butter—65c, Creamery 75c.

RULES OF CONDUCT.

When you come into any fresh company observe their humors. Suit your own carriage thereto, by which insinuation you will make their converse more free and open.

Let your discourse be more in queries and doublings than peremptory assertions and disputings, it being the design of travelers to learn not to teach. Besides, it will persuade your acquaintance that you have the greater esteem of them and so make them more ready to communicate what they know to you, whereas nothing sooner occasions disrespect and quarrels than peremptoriness. You will find little or no advantage in seeming wiser or much more ignorant than your company.

Seldom commend anything though never so bad, or do it but moderately, lest you be unexpectedly forced to an unhandsome retraction. It is safer to commend anything more than it deserves than to commend a thing so much as it deserves, for commendations meet not so often with oppositions, or at least are not usually so ill received, by men that think otherwise as discommendations, and you will insinuate into men's favor by nothing sooner than seeming to approve and commend what they like, but beware of doing it by comparison.—Sir Isaac Newton.

When in town call at the Courier office and let us tell you what it will cost to have the name of your farm printed on your letterheads and envelopes. A little advertising will pay you big interest on the money invested.

CANCER IN WOMAN'S BREAST

ALWAYS BEGINS AS SMALL LUMP LIKE THIS AND ALWAYS POISONS DEEP GLANDS IN THE ARMPIT AND KILLS QUICKLY

I WILL GIVE \$1000

IF I FAIL TO CURE ANY CANCER OR TUMOR I TREAT BEFORE IT POISONS BONE OR DEEP GLANDS

No KNIFE or PAIN
No Pay Until Cured
No X-Ray or other swindle. An island plant makes the cure ABSOLUTE GUARANTEE

Dr. L. G. ICE
DENTIST
Beaver Building Ore gon Cit
Phones—Pacific, 1221. Home A 19

MISS LILLIAN BICKNER
Teacher of
Piano and Guitar
OSWEGO OREGON

DRESS.

Dress makes the man and also makes the woman. Good dressing need not be expensive. Good dressing is dressing in good taste, and good taste is more a matter of judgment than of purse. Good dressing is being so dressed that no one can tell half an hour after meeting you how you were dressed, so complete was the fitness of the habit to the inhabitant. Like the best window glass, dress should never call attention to itself.—Charles F. Thwing.

HABIT.

What is a habit? 'Tis a fettering chain
That binds the struggling spirit to the earth;
A hampering weight that clogs aspiring worth
And makes its brightest visions all in vain;

A blighting pall whose midnight depths detain
And quench each glowing fervor at its birth;
A serpent coil within whose monstrous grasp
Is crushed each noblest impulse of the brain.

What is a habit? 'Tis a silver thread
That links the soul to possibility;
A marble stone that turns the baser lead
Of evil bent to golden tendency;
A precious stepping stone from low to high;
A Jacob's ladder stretching to the sky.
—I. Forsyth Smith in Nautibus.

Notice to Horsemen

We have just bought the horse-shoeing shop at the foot of 6th St., and are now ready to do scientific work. All work the best that can be done. Come once and you will come again.
Telephone B 93
WHEATON & SHINVILLE
Better known as Peat the Horse-shoer and W. J. Wheaton, formerly employed by J. F. Hodge.

DON'T LET BABY SUFFER WITH ECZEMA AND SKIN ERUPTIONS

Babies need a perfect skin-covering. Skin eruptions cause them not only intense suffering, but hinder their growth. DR. HOBSON'S ECZEMA OINTMENT can be relied on for relief and permanent cure of suffering babies whose skin eruptions have made their life miserable. "Our baby was afflicted with breaking out of the skin all over the face and scalp. Doctors and skin specialists failed to help. We tried Dr. Hobson's Eczema Ointment and were overjoyed to see baby completely cured before one box was used" writes Mrs. Strubler, Dubuque, Iowa. All drug-gists, or by mail, 50c.

PFEIFFER CHEMICAL COMPANY
St. Louis, Mo. Philadelphia, Pa.

THE FATHER'S DUTY.

The father should have a working knowledge of a boy's body, its physiology, the pathological conditions that from time to time arrive, and the relation of these both to mentality and morality. He should understand the effect of normal growth upon the boy's character development, particularly during the period of adolescence. He should be able to give instruction in sex hygiene, knowing just what to tell and how much and just when to tell it. He should understand the supreme worth of muscular co-ordination in relation to self control and how, through manual training, gymnastics and athletics, these are developed. Fathers should understand enough of psychology to discover whether their boys are motor or sensory minded, enough to know why it is that at a particular time the boy begins to think and act for himself, and why it is the youth so often questions all authority and darkening doubts so easily beset his soul. It should be the business of the father to acquaint himself with these facts, that he may intelligently and sympathetically guide and control his boy. Here is where even a little knowledge is a helpful, not a dangerous, thing.—Franklin Matthews.

The hangable waether of early fall brings on coughs and colds that have a weakening effect on the system, and may become chronic. Use Foley's Honey and Tar Compound. It has a very soothing and healing effect on the irritated and inflamed air passages, and will help very quickly. It is a well known family medicine that gives results. Huntley Bros. Co.

U'REN & SCHUEBEL

Attorneys at Law
Will practice in all courts, make collections and settlements of estates, furnish abstracts of title, and lend you money, or lend your money on first mortgage. Office in Enterprise Bldg., Oregon City.

Dr. L. G. ICE

DENTIST
Beaver Building Ore gon Cit
Phones—Pacific, 1221. Home A 19

MISS LILLIAN BICKNER

Teacher of
Piano and Guitar
OSWEGO OREGON