

# PRACTICAL HOUSE GOWNS & APRONS



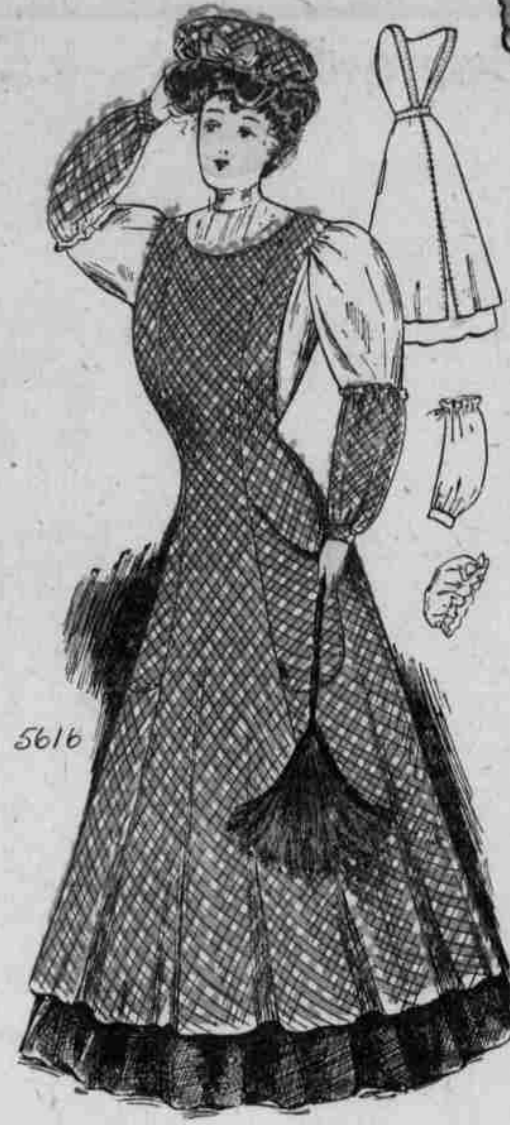
5645



5799



5828



5616

A COMFORTABLY fitting wrapper or house gown is an indispensable garment. The one pictured is a favored design owing to its extreme simplicity. A choice of full length or elbow sleeves is given, and the neck may be in square cut, outline or finished with a high standing collar. Several materials are adaptable, such as cashmere, flannel, dimity, lawn and China silk. The medium size will require 6½ yards of 36-inch material.

Ladies' House Gown, No. 5828. Sizes for 32, 34, 36, 38, 40 and 42 inches bust measure.

To some women the close fitting house gown will always be the correct thing; and nothing could be more graceful than this princess wrapper with its long sweeping lines and well-shaped curves. The collar adds charm to the dress, and no extra trimming is necessary. The neck cap also be made

high, as the pattern provides for that. Silk flannel, cashmere, or any washable material will make up nicely. The medium size requires 7½ yards of 44-inch material.

Ladies' Princess Wrapper, No. 5645. Sizes for 32, 34, 36, 38, 40, 42 and 44 inches bust measure.

There is a certain charm about a dainty white house apron that is certainly very attractive. This one is made of white lawn. The princess front adds greatly to the dressy character of the garment and the frills of embroidery that form the trimming give the wide shoulder effect so essential to present styles. It would also be suitable as a maid's apron. Cross-barred muslin, linen, gingham and percale will all be suitable for reproduction. The medium size will require 4½ yards of 36-inch material.

Ladies' Princess Apron, No. 5799. Sizes for small, medium and large.

The three useful and practical articles comprising this set are made of checked gingham. Excellent shaping is given to the apron by the seams in the front that extend from the shoulders to the lower edge, and by darts at the sides. The straps are arranged over the shoulders fastening to the belt in the back. Two large pockets are a useful feature, although they may be omitted. The sleeve protectors extend from the wrist to the elbow, and are full enough to accommodate the dress sleeve underneath. Gingham, sateen, butcher's linen, chambray and Holland can be used in making these garments. For the medium size apron and sleeve protectors, 5¼ yards of 36-inch material will be required and ¾ of a yard for the cap.

Ladies' Work Apron, Sleeve Protectors and Cap, No. 5616. Sizes for 24, 28 and 32 inches waist. Patterns of these illustrations will be mailed to any ad-

dress by carefully filling in the accompanying blank and mailing with ten cents for each pattern, to Marjorie Dane, 43 West 34th Street, New York City.

Marjorie Dane, 43 West 34th Street, New York City

Enclosed please find \_\_\_\_\_ cents for

Pattern (s) No. \_\_\_\_\_

Size (s) \_\_\_\_\_

Name \_\_\_\_\_

Town \_\_\_\_\_

State \_\_\_\_\_

## WILLIE CUTE CURES DINAH OF SMOKING.



## SAVES BABIES LIVES IMPERIAL GRANUM

BABY RICHARDSON

Son of G. B. Richardson,  
92 Wadsworth Avenue, Bronx,  
New York City.  
Age 12 months; weight, 25¼ lbs.  
Imperial Granum made this baby strong  
and healthy

The Unsweetened  
**FOOD**



Babies fed on it have perfect digestion, no bowel irregularities, strong bones, teeth and plump firm flesh with no flabby fat.

TRIAL SIZE, 25 cts.,  
AT DRUGGISTS

FREE! Send us your name and address and we will send you a cute little rag doll for baby, a large sample of Imperial Granum and our helpful book for mothers, "The Care of Babies."

JNO. CARLE & SONS  
Desk 34  
153 Water St., New York

## Cards to Wedding Reception

WHEN a church wedding is succeeded by a reception or breakfast there is enclosed with the wedding invitation also an engraved card of medium size inscribed thus:

Mr. and Mrs. Charles B. Doan  
request the pleasure of  
\_\_\_\_\_ company  
on Monday, October the fifth  
at half past twelve o'clock  
Twenty-two Washington Avenue  
R. s. v. p.

or,  
Reception  
from half past four o'clock  
Twenty-two Washington Avenue  
R. s. v. p.

Invitations to a midday wedding, followed by a breakfast at the bride's home, are now not infrequently cast in the very suitable English form. In this form the wedding invitation is engraved on a double sheet, and then

in smaller lettering at the bottom of the page is added, "and afterwards at breakfast," followed by the address of the bride's parents.

In event of a home wedding, the invitations are engraved as for a church ceremony, with the substitute in place of the sentence, "honor of your presence," of the phrase "pleasure for honor of your company." For a home wedding where the marriage ceremony is to be performed in the presence only of the immediate families concerned and to be followed by a large reception, the invitations issued generally take this form:

Mr. and Mrs. Charles B. Doan  
request the pleasure of your company  
at the wedding of their daughter  
Lydia Madeline

and  
Mr. John Henry Richards  
on Monday afternoon, October the first  
at four o'clock  
Twenty-one Beech Street