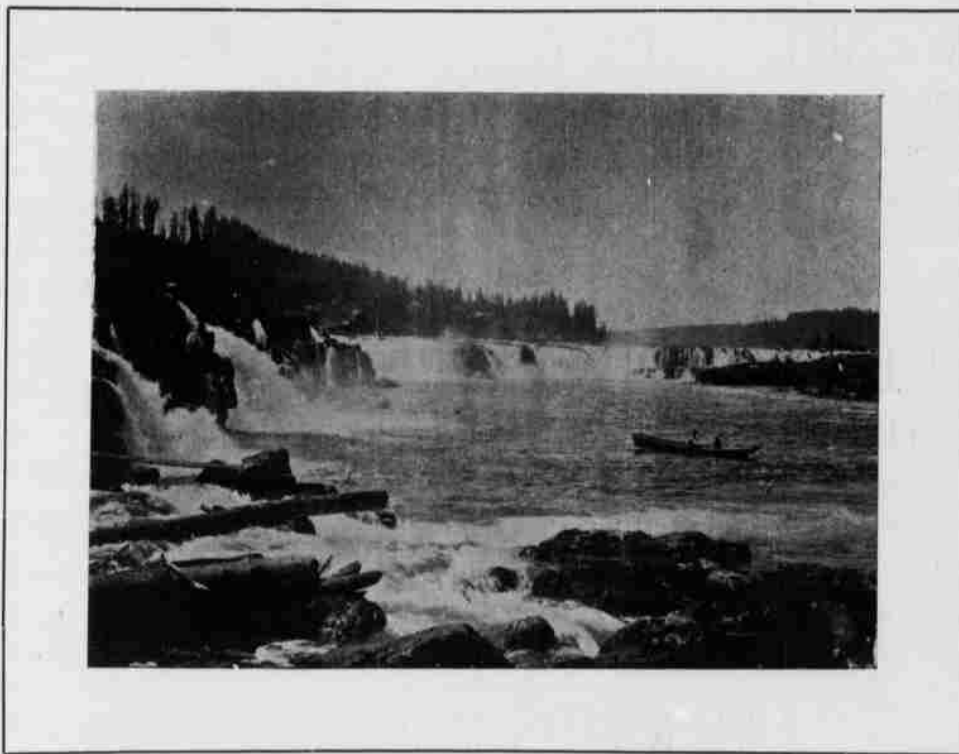


P. F. MOREY, President

H. W. GOODE, General Manager

# The Portland General Electric Co.

## Portland, Oregon



Owner of the water power at Willamette Falls, Oregon City, Oregon. Has a fire proof concrete station building, equipped with machinery to generate ten thousand electrical horse-power, with transmission line to Portland, twelve miles distant, carrying current for light, heat and power. Owning nearly two thousand acres of land near the falls, on the east and west sides of the river, the company is prepared to offer very advantageous terms to manufacturing enterprises that will locate there and use either direct water or electrical power. Steam and electric railway and river transportation between Oregon City and Portland.