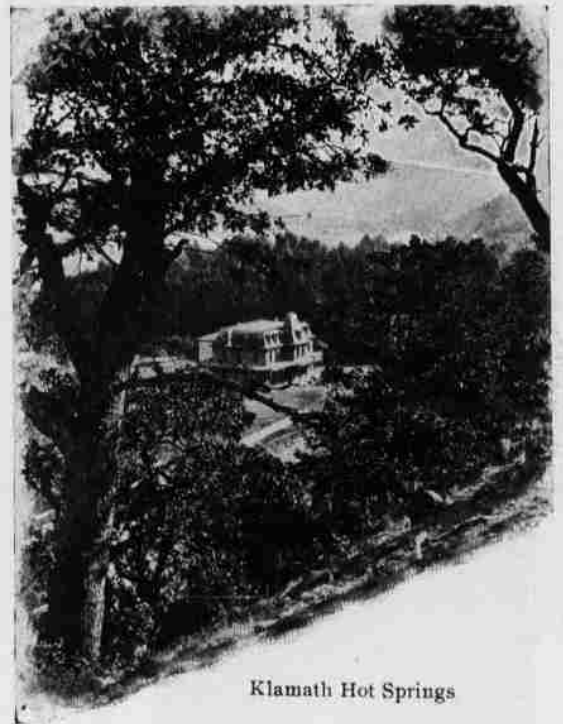


SOUTHERN PACIFIC RAILWAY



Logging Train on the McCloud River.



Klamath Hot Springs

The Scenic Line from Portland to the East via Southern California.



Sisson's Tavern.

Facility of transportation forms a leading factor in the prosperity of Oregon City and Clackamas County, and our home company, the Southern Pacific, affords constantly improving service for the movement of our products and communication with our neighbors, north, south and east.

The recent inauguration of double daily trains to San Francisco was a notable addition to our facilities, and has made it possible to reach, in two days' time, the many

resorts of Southern California, so attractive at this season.

The very best of Pullman's 16-section tourist sleepers run to Washington City, Cincinnati, St. Louis and Chicago, six days in the week, giving every accessory and comfort to travel at the smallest cost. Surely no one in search of change, relaxation, enjoyment and variety in the Eastern journey can afford to overlook the manifold advantages offered by the Southern Pacific, and we submit that

no itinerary is complete or satisfactory unless the Shasta-Sunset Route is included on the way.

The company's lines in the Willamette Valley include the main line, the East and West Side branches, and the Lebanon branch. The managers have adopted a broad policy of devoting attention to the development of the country through which the road runs, and it is an important factor in promoting the interests of producers and manufacturers.