

## MOLALLA

### Where the Large Mercantile Establishment of L. W. Robbins is Located.

Naturally the richest and the most desirable section of Clackamas county, for all purposes of agriculture, is Molalla Prairie, and the conclusion logically follows that Molalla Corners is an excellent point for general trade. It is in truth a thriving village, and the prosperous farmers that live around it, cultivating the fruitful black soil, have made it such. But let us not forget that one of the main sources of income of the Molalla farmers is fat cattle. They supplement their stock

a few of its farms are large, too large for profitable handling, and there is a chance to buy.

The large tracts of saw timber in the upper Molalla country have barely been touched. The future, too, will see the development of valuable mines in the mountains.

Molalla farmers find a source of profit with a minimum of labor, in sheep and goats, for which the country is well adapted.

It is no exaggeration to say that there is

store, having a floor space of 3750 square feet, the customer finds a full stock of dry goods, groceries, boots and shoes, men's and boys' ready-made clothing, women's wrappers, shirt waists, capes and jackets, notions, family medicines, hardware and agricultural machinery. Mr. Robbins is special agent for Oliver Chilled and Steel plows, Deering Harvester Co.'s binders, mowers and hay-rakes, Bain Wagon Co.'s wagons, and Winona Wagon Co.'s Rushford wagons. A good



STORE OF L. W. ROBBINS.

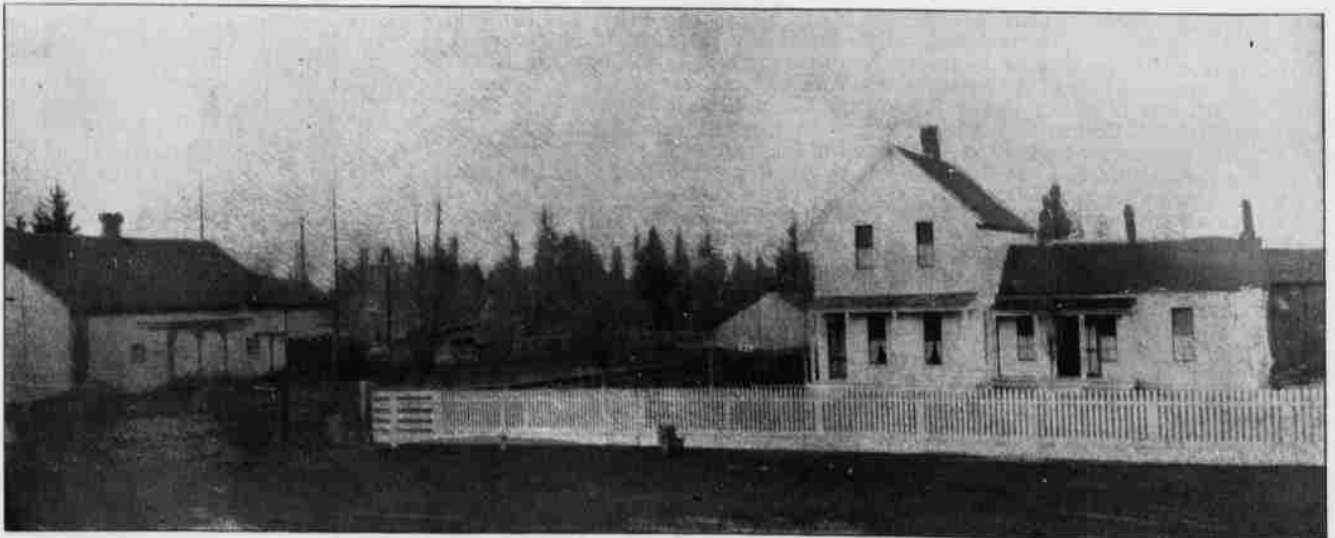
farms by extensive pastures on the upper Molalla river, whence they drive cattle late in fall "rolling fat." Favorable, economic conditions have produced on the Molallans beneficent results; they are intelligent, liberal-minded and enterprising.

The newcomer who wishes to locate in a place where Nature will be kind to him should keep his eye on Molalla Prairie. Not

probably no store in this county of 25,000 people that does a larger annual business than that of L. W. Robbins, successor to Levi Robbins, in the village of Molalla. Mr. Robbins is a young man and in all respects an up-to-date merchant, being a "cash dealer." He carries a large stock of general merchandise, and handles all kinds of farm produce, always buying or selling for cash. In this

stock of plows, drag and spring-tooth harrows are always kept in stock. When you want anything in the machinery line write to this firm for spot-cash prices. Its office is supplied with a long-distance telephone.

It may surprise you a little if we say that the Molalla merchant is one of the largest shippers of chickens, turkeys and eggs in the Willamette Valley. It's a fact.



FARM HOUSE OF JOHN R. SHAVER.