

The Bank Of Commerce
116 North Jersey St.

Business concerns and individuals are invited to bank with this institution under the assurance that prompt and courteous treatment with every consistent accommodation will always be extended.

NOTICE TO OUR PATRONS

Extensive alterations have been made at our First and Alder Streets Passenger Station and much better accommodations have been provided for our patrons. This building is now being used exclusively by us and, in addition to the ticket office, lost articles bureau and express office, we have installed an "ELECTRIC STORE," where made lamps and electric appliances may be purchased, applications made for electric light and power, and where light and power bills may be paid. This will make it possible for our patrons to transact such matters of business with our Company without going up to our main office in Electric Building, and you will receive the same courteous and attentive service.

Portland Railway Light & Power Company
"Buy Your Electric Goods at an Electric Store"

Notice of Final Account

In the Circuit Court of the State of Oregon for the County of Multnomah, In Probate, No. 17960.
In the matter for the Estate of Oscar M. Downs, deceased.
Notice is hereby given that the undersigned as Executrix of the Estate of Oscar M. Downs, deceased, has filed her final account in the Circuit Court of the State of Oregon for the County of Multnomah, in Probate, and that Monday, the 25th day of April, 1921, at the hour of 9:30 A. M., o'clock, of said day in the Court room of said Court has been appointed by said court as the time and place for the hearing of objections hereto and the settlement thereof.
Date of first publication March 25, 1921.
Date of last publication April 22, 1921.
MABELLE V. GORDON, Executrix.
Sidney Gordon, Gerlinger Bldg. Main 6091, Attorney at Law.

Real Estate CENTRAL LOCATION

Fifteen years in the business in St. Johns. List your property with us. We make sales. S. C. COOK, 402 N. Jersey

Report of State Survey

The Oregon State Survey of Mental Defect, Delinquency and Dependency conducted by the Extension Division of the University of Oregon at the request of the Legislature, under the direction of the United States Public Health Service, has been successfully completed by the voluntary assistance of hundreds of loyal Oregonians without the expenditure of any special state appropriations and the report has been transmitted to the members of the Thirty-first Legislature. Oregon has thus blazed a new trail for cooperative community betterment in the fields of mental, physical and social hygiene. The survey has reviewed over 65,000 socially inadequate individuals in Oregon, of which 29,555 were complete or partial dependents and 30,141 were delinquents. Excluding two-thirds of each type as minor cases, there remain about 20,000 of whom approximately ten per cent are mental defectives. Total known insane and mental defectives 7,686, a ratio of 9.8 per thousand of the general population. Rejections in the army draft in Oregon for such causes were 11.26 per thousand, so the survey is clearly conservative. Special studies with adult criminals showed 51 per cent mentally dull or defective, while 22 per cent of these adult criminals have the mind of a child of 12 years or less and are distinctly mentally defective. The same element of mental defect holds true for juvenile delinquents. Of 451 dependent inmates of poor farms 175 showed mental defect. In addition, the survey shows a referendum of the teachers in the public schools covering 32,480 pupils in the state. Of these 9,742 children were too old for the school grade they were in, owing to their failure to advance in school work in accordance with normal expectation. The causes of this retardation in overgrade children are parental, economic, environmental, temperamental, physical and mental.

"Change at Youngstown, madam," said the station agent to a villager who was buying a ticket to the city. "None of them tricks, my lad," returned the old lady. "I want my change right here before I get into that there train."—Ex.

ROGERS will have a Mezzanine Floor Bargain Counter soon as the goods arrive.

THE SERVICES OF THE EPISCOPAL CHURCH

are held every Sunday at 9 A. M. in I. O. O. F. Hall Sunday School at 10 a. m. JOHN D. RICE, Vicar

St. Johns Fuel Co.
515 Columbia Boulevard Slab and Cordwood Office Wildrose Shingle Co. Phone Col. 918

THE NATIONAL Vulcanizing Co.
205 S. Jersey St.

Is the Oldest Established, Best Equipped and most Reliable Tire repairing Establishment on the Peninsula.

All work done on a money back guarantee. We take pride in turning out the best retreads in Portland.

New and second hand tires for sale. Just one block south of the Peninsula National Bank, on car line.

CHAS. F. BOYLE, Prop.

Pulley & Zurcher
Plumbing, Heating & Tinning We Repair Aluminum Ware Phone Col. 92 207 S. Jersey St.

Portland, Ore. Phone Col. 1064

W. S. Wymore
Contractor in all kinds of Cement work or Day work. Residence 916 N. Central Ave.

J. W. BOTTOM
Contract Painter 507 East Allegheny St. Phone Columbia 1212

FOY'S St. Johns Fair Store
Highest Quality and Lowest Prices

Toys a Specialty
207 N. Jersey St. Phone Col. 839

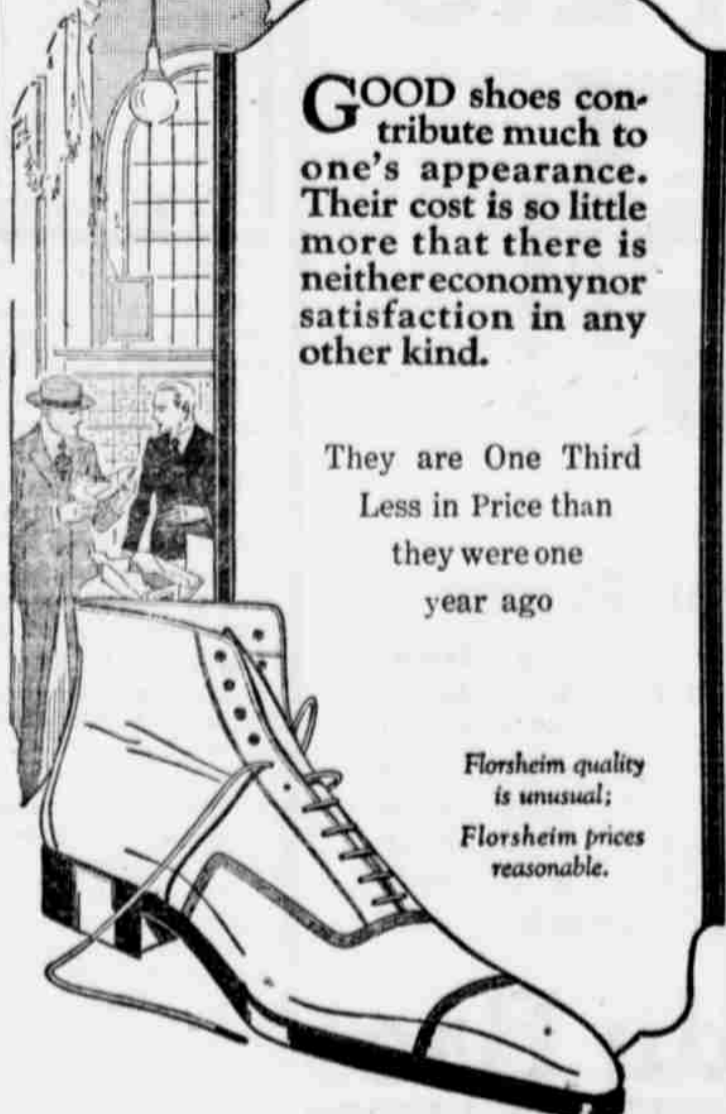
Dr. W. J. Gilstrap
Physician & Surgeon Glasses Accurately Fitted X ray Laboratory Peninsula Security Co. Bldg. St. Johns.

Poff & O'Neil
TRANSFER AND STORAGE Sand and Gravel Daily Trips to Portland Phone Col. 308 206 N. JERSEY ST

The Head light
The overall of quality. Full measurement, 1 o c k seams, roomy, fast color, strong fabric.

Boys' Suits
When they play, boys like to be independent of the care of clothes. But when he must dress up he wants to look his very best. Encourage that habit of self respect by fitting him with a Mayer Made suit.

THE FLORSHEIM SHOE



GOOD shoes contribute much to one's appearance. Their cost is so little more that there is neither economy nor satisfaction in any other kind.

They are One Third Less in Price than they were one year ago

Florsheim quality is unusual; Florsheim prices reasonable.

The Cooper Union Suits
The Kenosha Union Suits, the Cooper quality, once worn are always demanded. We are the local agency. We have your size.

Men's Griffon Suits

Well tailored, excellent fabric, stylish cut, moderate price. Installment plan if your credit is established.

--Draperies--
New and exclusive designs and color from the loom of Marshall Field & Co. Make your house a "Homey" place by new hangings. It is not the high cost that makes the home; it is industry, taste and interest.

The Community Club, Tues., April 19
Next Meeting is a Basket Social and other Stunts Meet at the Bank Corner at 6:30. Transportation will be furnished to the Peninsula Club House

Bonham & Currier
MISS PLASKET, Buyer Dry Goods Dept. L. E. ROSE, Mgr. Men's Dept.

THE ST. JOHNS GARAGE
216 North Jersey St. Authorized Ford Service Station. Complete line of Ford parts in stock. Tires, tubes and accessories. **CARS STORED** Welding, Brazing and Radiators Repaired. **Woolley Bros.** Phone Columbia 590.

Paint Creates Prosperity
Save The Surface and You Save All
The "run down" house (there is one near you) is fast going to ruin merely because the owner unwisely neglects to keep it protected with paint. It costs more not to paint than to paint. Paint saves the surface and protects the building from sun, rain, frost and varying weather conditions that bring destruction. Prosperity demands the protection of all exposed surfaces with good paint.
ACME QUALITY HOUSE PAINT
gives lasting protection and beauty. It costs less because it takes less and lasts longer. Call at our store and let us show you color samples and assist you in selecting the proper color combinations that will make your house appear to the best advantage.
The Home Mercantile Co.
209 W. Burlington Street

KNIGHTS AND LADIES Security Benefit Association
St. Johns Council 2775
Regular meetings first and third Mondays. Open meetings to the public and members and 4th Mondays. Visitors and members cordially invited to attend at Moose Hall.
Laurel Lodge, I. O. O. F.
No. 186, St. Johns, Oregon. Meets each Monday evening in Odd Fellows hall at 7:30. A cordial welcome to all visiting brothers.
St. Johns Camp No. 7546
Modern Woodmen of America. We heartily solicit the attendance of our members at our regular meetings every 2d and 4th Thursday evening. G. W. Muhn, I. J. Ogden, Counsl.
HOLMES LODGE NO. 101
KNIGHTS OF PYTHIAS Meets every Friday night at 7:30 o'clock in BICKNER Hall. Visitors always welcome. R. CORCORAN, C. C.

W. A. CARROLL
Real Estate Broker
Own Your Home
New Listings for your inspection now on file at our office. Some fine bargains in homes both city and country. Phone Columbia 1285 301 N. Jersey St. COR. BALTIMORE

I buy or sell St. Johns Property
A. W. DAVIS
Real Estate
Fire Insurance and Notary Public List your property with me if you desire to sell quickly

Phillips & Leland
Transfer and Storage Phone Col. 72 Office 209 S. Jersey DAILY TRIPS TO PORTLAND

T. W. HAYES
Plowing, General Team Work and Basement Excavating Gravel and Sand Hauling 877 Vale Street, St. Johns. Call after 5 p. M. or Sundays.

ELMER SNEED
Violin Instruction STUDIO, 215 N. Syracuse Street Phone Columbia 302

Coal Prices Reduced
Green Wood, Part Green and Dry Immediate Delivery
St. Johns Lumber Co.

CHAMBERS COMPANY
Residents of St. Johns having taxes and city liens to pay in Portland can make their payments without inconvenience by availing themselves of our services. We will pay same and secure your receipt without inconvenience to you. Fee, 25c. References: Any St. Johns Bank.—Peninsula Title, Abstract and Realty Co., by H. Henderson, Manager; 402 North Jersey Street.
BOYS' SHOES that really wear good—ROGERS.

Woodmen of the World
St. Johns Camp 773
Meet every Thursday evening in I. O. O. F. Hall, Leavitt and Jersey streets. Visitors always welcome. W. A. Frost, C. C. R. C. Clark, Clerk.
DORIC LODGE NO. 132
A. F. and A. M. Meets the first and third Wednesday of each month in Masonic Hall. Visitors welcome. John M. Blair, W. M. A. W. Davis, Secretary.
Minerva Chapter No. 105, O. E. S.
Meets every second and fourth Tuesday of each month in Masonic Hall. Visitors welcome. Alva Overstreet, W. M. Beale V. Post, Sec. 417 S. Pittston Street

PENINSULA CHAPTER
U. D. R. A. M. Stated meetings first and third Monday of each month in Masonic Hall. Visitors Welcome. W. A. CARROLL, E. H. P. G. H. LEMON, Secretary.

The Fraternal Boosters
Meets every Wednesday evening in the MOOSE HALL Join and Help Boost
PENINSULA TITLE ABSTRACT & REALTY CO
H. HENDERSON, Manager 402 N. Jersey Street Abstracts of Title Prepared Titles Examined Phone Columbia 255
Furniture Repaired and REFINISHED
Prices Reasonable
EDWARD BROOKS, Fixup Shop,
525 - 527 Columbia Blvd French Block.

SUNSET CASH GROCERY

111 Philadelphia Street Phone Col. 1148
Our Prices for Groceries Means Money Saved in Your Pocket
Pure Cane Berry Sugar, 11 lbs. \$1, Sack \$9.10
Less than Whole Sale Price

Folger's Coffee Special Continued This Week
300 lbs. additional to be Given Away FREE
1 lb. Golden Gate Coffee FREE with each 5 lb. can at... \$2.10
1/2 lb. golden Gate Coffee FREE with 2 1/2 lb. can at... \$1.10
Without a doubt this is the finest coffee packed in cans, money back guarantee, you must be satisfied.

Sunset Best Coffee, 35c lb. 3 lbs. \$1.00
Sunset Special Blend Coffee, 30c lb. 2 lbs. .55c
Breakfast Blend Coffee, 25c lb. 4 lbs. .95c
BUTTER MARKET HAS ADVANCED, BUT WE HAVE NOT
Our Famous Jersey Belle Butter, lb. .45c
Sunset and Oakdale Butter, lb. .40c
KELLOGG'S CORN FLAKES AND NEW POST TOASTIES 10 Cents Package
Limit 4 Packages to Customer

SPECIAL SALE CANNED PINEAPPLE
No. 2 Can, 2 Cans. .45c No. 2 1/2 Cans, Each. .25c
These cans average 8 slices to the can, packed in heavy syrup and are being retailed at less than the cost of production, buy all you want while the Sale Lasts, Saturday and Monday Only.
Extra Choice Jap Rice 25c Can K. C. Baking Powder 3 lbs. .25c 13 lbs. \$1.00
5c Pound, 20 lb. \$1.00 Now, Can. .20c
Fancy California White Beans, 5c lb., 20 lb. \$1.00
Fancy Yakima Bayo Beans, 3 lbs. 25c, 13 lbs. \$1.00
Fancy Chili Beans, 3 lbs., 25c, 12 lbs. \$1.00
Fancy Oregon Prunes 3 lbs. for. .25c
Fancy Black Figs 2 lbs. .25c
Fancy Evaporated Peaches 2 lbs. .45c
Fancy Oregon Italian Prunes, 25 lb. Boxes. \$1.90
This is a special buy and are only sold at the price by the box, 100 boxes to sell

Follow the crowds to the Sunset where you can save money on your every day wants. Every thrifty house keeper in St. Johns buys her wants at the Sunset and saves money doing so.