

Employment FOR ALL

University Park lies central to that great manufacturing district extending along the water front from the Portland Flouring Mill to St. Johns. Two thousand hands will soon have employment within easy walking distance from University Park. The better class engaged in this district are striving to have their homes at University Park because it is the desire of every good man to have his home in respectable surroundings.

University Park now has the far-famed Bull Run water at 50 cents per faucet, has more fine residences under construction than any other suburb, has employment for more men than any other suburb, has better educational facilities than any other part of Portland, has a larger payroll than any other suburb, has the highest degree of morality in Portland. It offers the best opportunity on earth to investors and homeseekers. Prices of lots are advancing. Call and see us about University Park.

FRANCIS I. M'KENNA
University Park, Oregon
H. G. SIBRAY
Selling Agent

Portland & Suburban Express Co

(Operating cars over Portland Consolidated lines)

Rates Reasonable
Prompt Service

We have made arrangements to transfer all freight in the city and at St. Johns when necessary by team at reasonable rates.

Do not move your furniture (of course you are going to St. Johns to live, Portland is moving that way) until you get our prices.

Portland & Suburban Express Company
W. R. STEARNS, Manager

ST. JOHNS

Lots \$100 Each
\$5 Down and \$5 a Month

Title Guarantee & Trust Co.

6 and 7 Chamber of Commerce

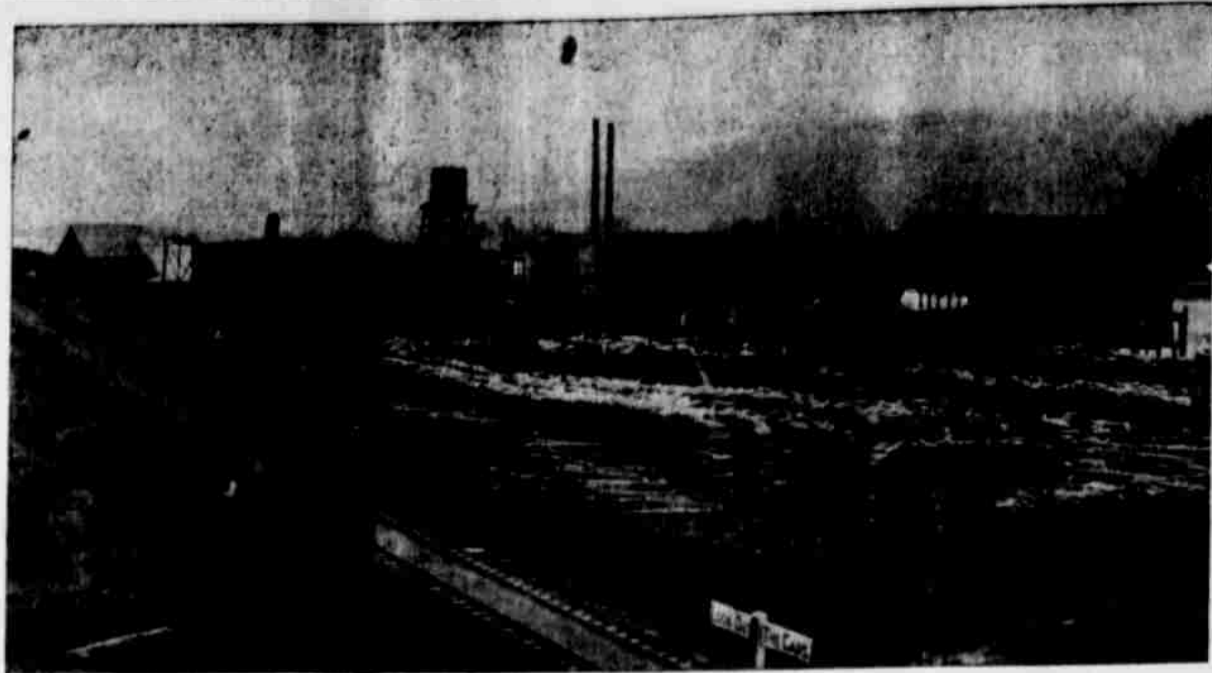
The Hazelwood

Is an up-to-date quick Lunch, Cigar, Confectionery and News Stand. The Celebrated Hazelwood Cream and Butter kept in stock.

Corner Jersey St. and Broadway
St. Johns, Oregon

N. A. GEE
House Mover and Repairer

Houses moved, raised and repaired. Odd jobs of all kinds. Prompt service and reasonable charges. Cor. Chicago and Hayes Sts., ST. JOHNS, ORE.



PLANT OF THE PORTLAND MANUFACTURING COMPANY.

One of the most enterprising industrial establishments that contribute to the substantial growth and wealth of St. Johns is the Portland Manufacturing Company, of which Mr. G. H. Carlson is the busy manager and Mr. Peter Autzen secretary and treasurer. It is the pioneer factory of its kind in this vicinity, being established over three years ago. An investment of about \$60,000 completed a plant of excellent character, abundant capacity and supplied with the most modern machinery.

The chief product of this factory consists of coffee and spice barrels, "draw bottoms," furniture stock and veneer, coffee drums and splint

baskets, fruit baskets and hop-picking baskets. In the manufacture of these necessary articles of commerce the Portland Manufacturing Company, which employs, on an average throughout the year, a force of fifty people a day, excels in the quality of its output. It consumes about 2,000,000 feet of raw material in a year, besides about 50,000 feet of lumber. The plant, with the average force, is capable of turning out 100 barrels a day. It enjoys the possession of 600 feet of water-front, extending back to the railroad. In the single article of hop-picking baskets it turns out between 450 and 500 dozens in a season—and the number is increasing rapidly. It makes about three tons of excelsior a day in a

run of ten hours. Its market is practically local, if up-river points are included.

Repairs to the boilers of the plant have recently caused it to suspend active operations temporarily, but it had previously supplied its warehouses with an abundant stock of output before it closed down for these repairs. It is now running on full time. The Portland Manufacturing Company is a most progressive concern. Its plant is extensive and consists of the best machinery to be had. Its products are noted for their excellence and popular wherever introduced. Its field is constantly widening.

Necessarily its equipment for protection against fire is most com-

plete. The large stock it carries, both of the finished product and raw materials, fully warrant the outlay made in preparation against invasion by the fire fiend.

Manager G. H. Carlson looks for a large increase in the demand for the product of his factory during the present year. He has put the company on a footing of safety in this respect—everything being in readiness to supply any increased order that may come in from any quarter, domestic or foreign.

The Portland Manufacturing Company is one of the institutions of which the people of St. Johns are proud. It has been a home-builder ever since it began operations; and many there are who are anxiously watching it grow.

USEFUL INFORMATION.

A Few Questions Propounded and Answered.

For the information of many distant readers of The Review, who are desirous of getting reliable information about this district, the following questions are answered correctly and honestly as possible:

- Question—Where is St. Johns?
Answer—In Multnomah County, Oregon, seven miles north of Portland.
- Q.—Is it an incorporated city?
A.—It is, and has a government of its own.
- Q.—Are taxes high?
A.—No, the last levy was only two mills.
- Q.—What is the population?
A.—Over 2000 people.
- Q.—Is it on the ocean?
A.—No, it is located between the Columbia and Willamette rivers. All vessels entering Portland harbor must pass St. Johns docks.
- Q.—Are the rivers navigable?
A.—Most certainly they are, from ships that float, from all parts of the world, load and unload their cargoes with safety and dispatch in our harbor.
- Q.—Are there any railroads?
A.—Yes; the O. R. & N., a part of land, and the O. R. & N., a part of the Southern Pacific system, traverses the water front for several miles, and the Northern Pacific is on the opposite side of the Willamette river, besides we have an excellent electric line that one can ride to any part of Portland for a five-cent fare.
- Q.—What lines of business are there?
A.—See the advertising columns of this paper.
- Q.—Is business overdone?
A.—No; there is room for more substantial business houses.
- Q.—What supports the town?
A.—The large mills and factories. There are three sawmills, one veneer factory, one box and basket factory, two shipbuilding yards, one large dry dock, one porch and column factory, one flour mill, one woolen mill, and several other smaller factories.
- Q.—What is the pay roll?
A.—About \$20,000 per month.
- Q.—How about school and church privileges?
A.—One large school house (the second one contemplated) and three churches. The university is about a mile from St. Johns.
- Q.—How about the prices of property?
A.—Prices are most reasonable. Business property from \$15 to \$50 per front foot. Good residence property from \$4 to \$10 a front foot.
- Q.—Any saloons?
A.—No, and not likely to have soon.

Q.—Any other industrial enterprises in prospect?
A.—Yes; several mills and factories, and a meat packing house.

Q.—To whom can I write for further information?
A.—Secretary Commercial Association, or the editor of The Review will answer all questions.

CHURCH NOTES.

Seventh Day Adventist.—Sabbath school at 10 A. M.; regular service at 11 A. M. every Sabbath. Prayer meeting Wednesday evening. E. D. Haribert, Elder.

M. E. Church.—Preaching 11 A. M. and 7 P. M.; Sunday school 10 A. M.; class meeting 12 M. Prayer meeting Thursday evening 7:30 P. M. Epworth League, 6:30 P. M. Sunday. Junior League 2:30 P. M. Sunday.

The subject of the morning service at the Evangelical church, next Sunday will be "Prayer," evening service, "The Lost Sheep."

There will be Congregational services at Bickner's hall Sunday afternoon at 3:30. Sunday school at 2:30.

SOCIETY NOTICES.

St. Johns Camp No. 773, W. C. W., meets every Wednesday evening at 8 o'clock p. m. Bickner's hall, St. Johns. Consul commander, R. C. Clark; clerk, Wesley Penny.

Cedar Camp No. 3544, Royal Neighbors of America, meet every Thursday evening. Mrs. Emma Gillum, orator; Mrs. E. S. Churchill, recorder.

FOR SALE

Two and one-half Acres, 3 blocks from street cars, part cash, balance on time. Also 1-4 acre, partly improved. Apply to ROWAN & RALTON, Contractors St. Johns, Oregon

Blacksmithing

General Repairing

M. L. ROWLAND

Has purchased the Blacksmith Shop corner Ivanho and Tacoma streets.

Horseshoeing a Specialty

All Work Promptly Done and Correct Prices assured

St. Johns Has

Three 1-4 Acre Lots for Sale

With alleys and corners.

Dr. William Wolf Hicks

St. Johns Heights, ST. JOHNS, Or

Fire Protection.

Protect your business property or residence by placing in it a "Royal Chemical Fire Extinguisher." Many have been sold in St. Johns. They are "up to date." Call up D. L. Butler & Co., Phone Main 2237, and order one.

WANTED.—Good, live agent for fast selling article. Call at St. Johns Hotel.

Miss Lena Parker will take a small class in elocution. For particulars, call or address her residence on Edison St., St. Johns, Or.

Deeds and Contracts.

The Review has printed and keeps in stock the latest and most perfect forms of deeds and contracts, which may be purchased at the office at prices less than is usually charged for such blank forms.

Attention, Homeseekers!

We have a few good homesteads, ready for the plow, close to railroads and markets; also a few good timber claims. Party leaving soon. Room 12, Citizens' Bank, Portland, Or. Hoban & Taggart.

OSCAR DeVAUL, M. D.

Office hours, 9 to 12 a. m., 2 to 5 p. m.

Office Phone, Scott 1104.

Residence Phone, Union 5901.

Office in University Park Drug Store.

Dr. E. W. ROSSITER

PHYSICIAN AND SURGEON

Office hours: 9 to 12 and 1:30 to 5.

Residence Phone Scott 1194.

Office Phone Union 4002.

Dr. MARY MacLACHLAN

Office hours, 9 to 12 a. m. 1 to 5 p. m.

Residence Phone Scott 6356.

Office Phone Union 6994.

Office: Upstairs, next Elliott's Drug Store.

Prof. J. A. Sibbets

Resident Instructor of Instrumental Music. Thorough and practical instructions on Violin, Piano, Reed Organ, Guitar and band instruments. Terms are reasonable. Beginners will receive careful attention. Call or leave orders at Elliott's Drug Store.

NOTICE

Now is the time to make a good investment. A 1 1/2 story house, 7 rooms, pantry and two closets, a 75 barrel cistern and a good well, the only well in the vicinity. The location is the best that can be had as it lays center way between the Loop in Point View. Call on or address WALTER W. WOOD, Box 38, St. Johns, Oregon.

Short, Dry Fir Slab Wood
\$3.00 per Load
Short, Dry Fir Cord Wood
\$5.00 per Cord
Same kind of Wood; What's the difference? Why one is split by a saw, the other with an ax, that's all.
Short GREEN WOOD,
\$2.50 per Load
See D. A. SMITH, Cone's Mill
Or Phone East 3035

W. J. Peddicord

REAL ESTATE
INSURANCE
RENTALS
LOANS

601—Lot facing 126 feet on car line and running back 98 feet.

300—3 1/2 Acres on Willamette Boulevard near Peninsular Lumber Co.'s large plant. Terms: \$1100 cash, and \$400 next November and \$500 each succeeding year till paid. Interest, 6%.

300—Lot 60x100, two blocks from school house. A fine corner.

270—Lot 50x126, close in and near car line.

Other lots at other prices. Also insurance and loans. Correspondence invited.

W. J. PEDDICORD

ST. JOHNS HOTEL

MISS RICH, Proprietress

Jersey Street - - St. Johns, Ore.

Good Meals

Comfortable Rooms

GOODRICH & GOODRICH

ARCHITECTS

ST. JOHNS AND PORTLAND, OREGON

Subscribe for THE REVIEW.