

Kemard and Adams
UNIVERSAL PROVIDERS

THE BIG EAST SIDE STORE

WITH SMALL PRICES

539-541-543-545 Williams Avenue ALBINA ONE OF PORTLAND'S LEADING STORES

UNDERWEAR



LADIES, MISSES, AND CHILDREN
Ours is the FORREST MILL, the very best underwear that can be made for the prices.

Ladies' fleece lined and good weight
25c each

is equal to many sold down town for 50c. See them and you will say so too.

Misses' and Childrens' **23c to \$1.00 each.**

See the lot of shirts only we are now selling for **19c each.** Extra value.

TRIMMED STREET HAT SALE



To close out the balance of our Fall and Winter Hats we have made great reductions. Hats ranging from \$1.25 to \$4.50 have been reduced to the very low price of

98 Cents

Take your choice—but better come early.

HOME OF THE FAMOUS HAMILTON BROWN SHOE



This line of Children's School Shoes makes constant friends.

For Girls, 98c, \$1.25, \$1.50, \$1.75, \$2.00
For Boys, \$1.50, \$1.75, \$2.00, \$2.25

Satisfaction with every pair or a new pair free

And we Pay Your CAR FARE

WE PAY YOUR CAR FARE

When shopping present this advertisement and we will refund your car fare

Deliveries made as far as St. Johns every Tuesday

DECEMBER 3, SATURDAY

IS TOY AND DOLL DAY

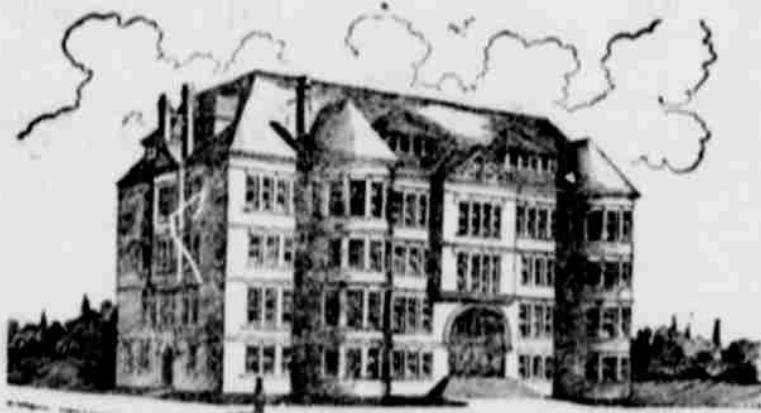
Grand Holiday Goods opening. Come and see. Bring all the children. Every child accompanied by parent or guardian will receive a present. **SANTA CLAUS WILL BE HERE TO GREET YOU**

UNIVERSITY PARK.

The Ideal Suburban Residence District of Portland.

University Park has, ever since the advent of the City & Suburban street railway into the district, been regarded as one of the most delightful and desirable residence locations of all the suburbs of Portland. Scores of elegant and imposing residences have been built, and many more are in process of construction. University Park and Portsmouth are the same, having only a local distinction. About the street car stations is clustered the retail business interests, which embraces a number of excellent and well stocked stores.

University Park is situated on the



COLUMBIA UNIVERSITY—UNIVERSITY PARK

high plateau between the Willamette and Columbia rivers. It is inside the city limits of Portland, Oregon. A street car line extends through the center of the addition and carries passengers to any part of the city for five cents. University Park has beautiful homes, city water, electric street lights, many graded streets, sidewalks, two wide boulevards, city schools, churches, thirty-acre public park, city telephone service, stores, and everything that is found in a great city except saloons and other places of vice. Along the water front of the Willamette and Columbia rivers come the ships of the world for the products of the three states. It is the seat of a great university, around which will gather a cultured and refined population.

On the water front is located the Peninsula saw mills, one of the most complete plants on the coast, and extensions are being made which will make it one of the largest. The Acme Lumber Co. is located on the brow of the hill overlooking the big dry dock. The Acme has one of the finest retail lumber yards in the city, and does an immense trade.

The commercial interests of University Park, St. Johns and the entire peninsula are so closely interwoven that any enterprise which contributes to on part is of benefit to the whole.

UNIVERSITY PARK AND PORTSMOUTH.

Various Interesting News Items Gleaned Thereabouts.

The Haywood Club, a very popular amateur dramatic organization, has arranged for the presentation of a series of entertainments at their auditorium, University Park, next Monday evening, Nov. 21. The popular three act comedy, "Between Acts," will be presented. This is a very enjoyable play. Admission, adults, 25 cents; children, 15 cents.

The dramatic club has in preparation the button-bursting comedy, "Tompkins' Hired Man," which will be presented at a future date, yet to be announced.

The University Drug Co. has put in

Park, and will conduct his business here.

R. Coon, a fruit grower from Hood River, and family are recent arrivals, and have become permanent residents.

J. A. Smith, a prominent business man of Gilliam county was here looking after business interests this week.

Reynolds, Dotson & Co., who have recently purchased the Portsmouth grocery, are running a truly modern grocery. They are very accommodating, and by keeping only fresh goods and selling at up-town prices, are building up a fine trade.

The new pharmacy in the brick block at Portsmouth will open in a few days.

Rev. Waters will preach at the M. E. church next Sunday morning and evening.

J. W. Fowler, manager of the Peninsula Lumber Co., left Tuesday for a trip to California.

H. P. Cone is building a hot house 50x100 feet, and equipping it with all modern improvements, for artificial heat, water, etc. The purpose is to raise early vegetables for the Portland market. Joseph Cone is putting in a duplicate plant within a hundred feet of that of his brother.

A large well is being dug on the University grounds, about 150 deep,

for the purpose of supplying the university with water.

A new shingle mill is being erected on the water front just below the university, at Moek's old wharf. Olsson Lumber Co. are the promoters.

Nash Bros. have built a carpenter shop near the station.

SOCIETY NOTICES.

St. Johns Camp No. 7540, Woodmen of the World, meets every Thursday evening, in Bieker's hall. C. D. Edwards, council; E. I. Thompson, clerk.

Camp No. 3544, Royal Neighbors of America, meets every second and fourth Tuesday evenings. Mrs. Emma Gillum, oracle; Mrs. E. S. Churchill, recorder.

The Commercial Association of St. Johns, meets every first and third Wednesday evenings of each month, at city hall. W. H. King, president; C. D. Hurlbert, secretary.

W. M. Killingsworth

THE PIONEER REAL ESTATE DEALER OF THE PENINSULA . . .

The finest list of residence property in the district.

Walnut Park offers the most desirable home sites—streets graded, lots 50x100. Sold at prices the most favorable in the market.

W. M. KILLINGSWORTH
303 Chamber of Commerce, Portland

Employment

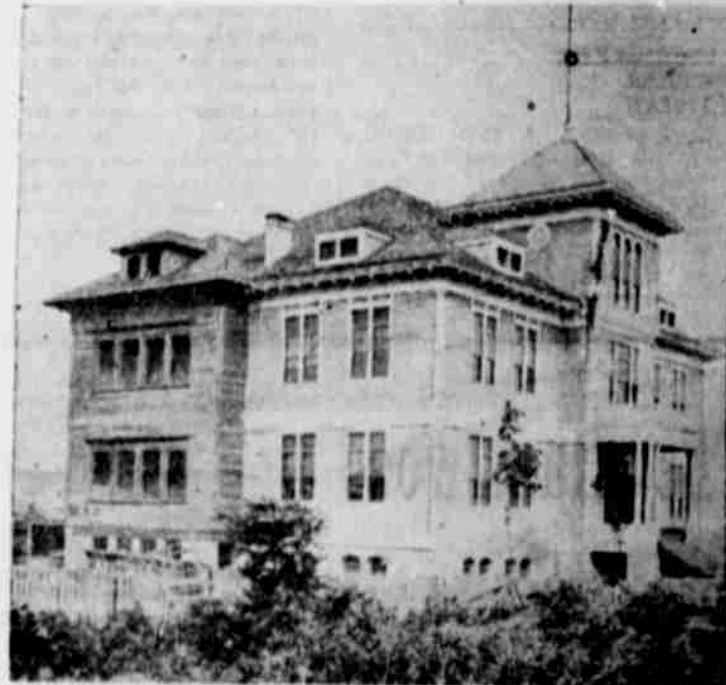
FOR ALL

University Park lies central to that great manufacturing district extending along the water front from the Portland Flouring Mill to St. Johns. Two thousand hands will soon have employment within easy walking distance from University Park. The better class engaged in this district are striving to have their homes at University Park because it is the desire of every good man to have his home in respectable surroundings.

University Park now has the famed Bull Run water at 50 cents per faucet, has more fine residences under construction than any other suburb, has employment for more men than any other suburb, has better educational facilities than any other part of Portland, has a larger payroll than any other suburb, has the highest degree of morality in Portland. It offers the best opportunity on earth to investors and homeseekers. Prices of lots are advancing. Call and see us about University Park.

FRANCIS I. M'KENNA

Room 608, Commercial Block
Portland, Oregon



SCHOOL HOUSE AT UNIVERSITY PARK.

A Brooklyn man stabbed his wife to death because his supper did not suit him. Some men are awfully particular what they eat at home, but they work the free lunch routes and eat anything in sight and never kick.

THE DELINEATOR.

An early copy of the December Delineator is in the book stores and one of the features of this excellent number is Mr. Le Gallienne's rendering of the Wagner love songs, of which we have hitherto only the wretched translations in the opera books. They are now put into superb English, with a setting worthy of their beauty. It is interesting to note, also, the striking advance in the printing of enormous editions, the color and black plates throughout the run a favor a million showing almost absolute fidelity to the original sketches. A review of the general contents of the number shows that it is one of the most important yet issued.

DANIEL BRECHT... HOUSES TO RENT

IF YOU WANT A HOUSE CALL ON ME

ST. JOHNS, OREGON

GEO. W. CONE LUMBER CO.

FLOORING, CEILING, BUSTIC

And All Kinds of Building Material

Prompt Delivery Guaranteed.

MILL AT FOOT ELLINGTON STREET
ST. JOHNS, OREGON