



NEW OFFICE AND SHEDS OF THE TUM-A-LUM



RESIDENCE OF E. N. HALL UNDER THE OCHOCO IRRIGATION PROJECT, BUILT AT A COST OF \$2500.



# LUMBER

If you are ready to build or are thinking of building, it will be to your advantage to let us figure on your LUMBER BILLS

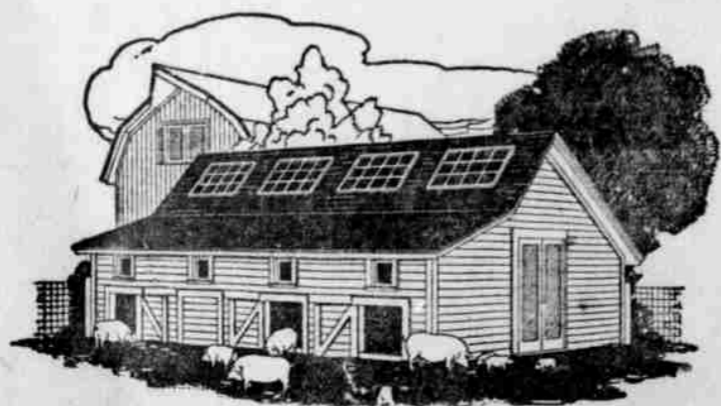


Our quotations will always be based upon the Grade of Material but suited to the building you wish to erect.



Whether it is a Barn, Chicken House, Pig Pen, Garage, Wagon Shed, Silo, Granary or Residence, we have the plans already drawn to suit your needs.

# TUM-A-LUM



BUILD THIS ON A SMALL SCALE AND KEEP A FEW HOGS



CHICKEN HOUSE—A GOOD INCOME CAN BE REALIZED UNDER THE OCHOCO PROJECT IN THE POULTRY BUSINESS.