

**HIGH SCHOOL NOTES**

**Junior-Freshman Game**

The game between the Juniors and the Freshmen, Thursday afternoon resulted in an 6 to 7 score in favor of the Juniors. However, the Freshmen will contest the game because of an ineligible player on the Junior team. The played failed to qualify because of an insufficient number of credits to enable him to represent the Junior class.

**Senior-Sophomore Game**

Friday afternoon, the Seniors and Sophs contended for honors on the basketball floor. When the whistle blew at the end of the final half the score stood a tie. The tie was then played off and the game resulted in a Senior victory, 13-12. Up to this time, this is the best class game that has been played. The teams were evenly matched in size of players as well as skill. Another feature that is worth comment, was some of the "regular old time" yelling. On the floor as well as on the sidelines, it appeared as if the seniors had to make their stand against the world, and they did.

Thus far, in the class games, the Seniors have two clean victories and the Juniors have one disputed victory.

**FORESTRY NOTES**

V. V. Harpham returned from Antone Sunday evening with the Forest Service truck. Mr. Harpham had taken the truck to Antone about three weeks ago to get a load of lumber for the Beaver Ranger Station, but on account of a bad breakdown he was unable to return with the lumber at that time. The trip from Mitchell to Prineville just now is a rather strenuous one, and it was necessary to engage a team to assist in getting up the north side of the mountain, where in places the snow was more than a foot deep.

The contractors, Elliott, Scoggin & Wolf, who are building the Wheeler county section of the Prineville-Mitchell road, have just about completed their task and by the end of the week the machinery and tools—in fact the entire outfit—should be moved out. The contractors are to be commended for their effort to complete the job this fall in the face of so much bad weather; and as the job is finished, the big steam shovel, which has played such an important part in the construction work, is working in about one foot of snow. Next year this section of the road

**OFFICE ROOMS**

Modern, well-lighted  
Brick Building  
Good Location  
Rates Reasonable

SEE

**Dr. A. W. Grater**

Benton Block - Phone Red #71  
PRINEVILLE - OREGON

will be surfaced for the entire length and a yearlong road between Prineville and Mitchell will be a reality, so far as the mountain part is concerned. Let us hope that the section between Prineville and Jones' sawmill, and that portion between the forest boundary and Mitchell will be under way within another year.

Rangers Anderson and Donnelly went to the Maury Mountain sawmill a few days ago and scaled several thousand feet of saw logs which had been purchased by Todd & Hamlin.

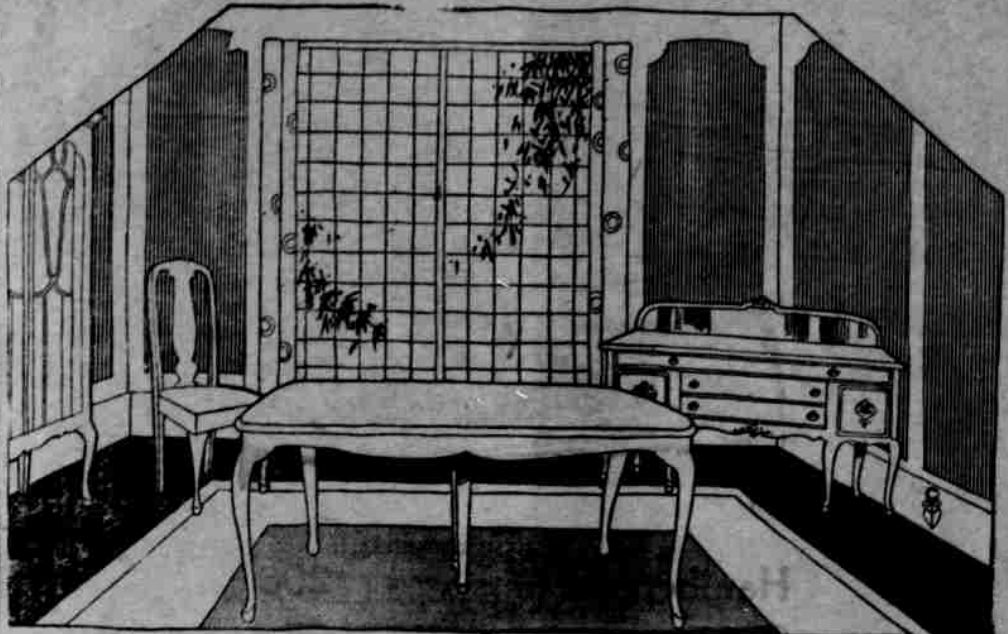
Ranger W. A. Donnelly of the local Forestry Office has been taking a couple of week's vacation and has spent most of his time on improvement work around his city property.

Ranger E. W. Donnelly, of the Snow Mountain district, who has been spending the past few weeks in Prineville, left for Mitchell on Wednesday's stage, from which place he will go to the ranch of his father and brother on the John Day river and spend the Holidays with them. He will return to duty about Jan. 1.

Miss McMurray, who has been attending school at the U. of O. for the past three months and who expected to be back at her desk in the local Forestry Office by January 1, has decided to continue with her school work at the above mentioned institution and will take the short course in Forestry, which begins soon after the 1st of January and continues for approximately three months.

**FURNITURE GIFTS**  
Are always Useful and Appreciated

We are busy this week moving into our larger new quarters, but we always have time to care for the requirements of our friends and have a large assortment of appropriate goods to pick from at prices that are right; Rugs at before-the-war prices, settees, rockers and complete bed room, dining room and living room furniture. Let us help you make a selection.



**Pedestal Floor Lamps**

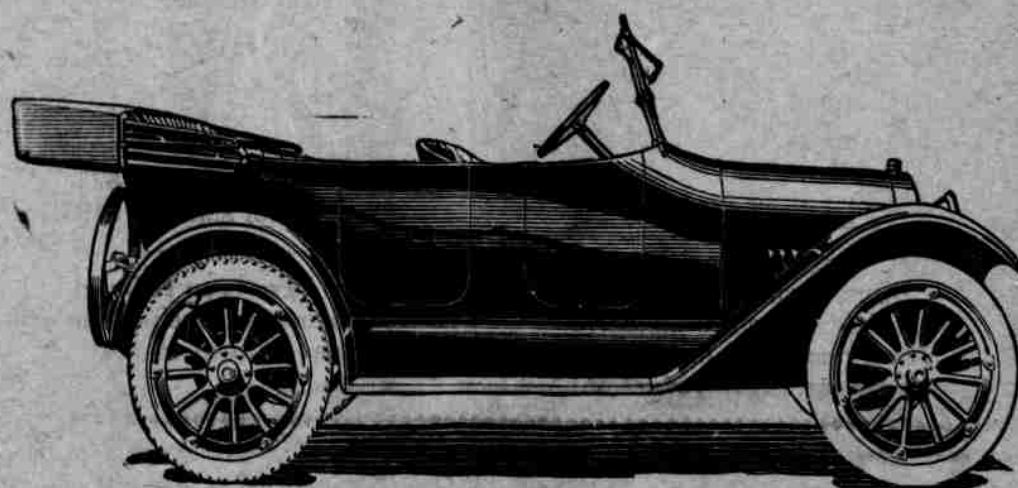
In many shades and designs besides a large assortment of table lamps. Also high quality trunks and bags in many styles. Baby cabs, high chairs and child's beds.



**Bend Furniture Co.**

BEND - OREGON

**YOU CAN'T BEAT THIS FOR A XMAS PRESENT**



**NEWELL MOTOR**



**SALES COMPANY**