

# Chevrolet

The cost of operating trucks depends to some extent upon the driver. If it is easy for him to drive he will operate it with greater efficiency, and thereby at a lower cost of maintenance.

The Chevrolet is an easy truck to drive. The controls are conveniently arranged as you will observe from the illustration below. And they are simple to operate. It is equipped with a good sized steering wheel, an adjustable windshield and adjustable head lights which are especially convenient for night driving.

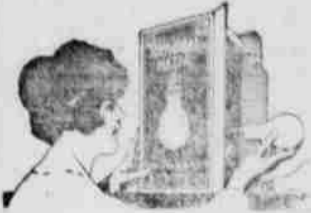
A governor is also provided which limits the maximum speed of the truck to twenty-five miles an hour and can be locked to prevent changing by the operator.

Electric lights and starter of the highest type two-unit system are also provided, as well as dimmers; electric horn; odometer; side curtains for driver's seat; windshield; complete tool equipment.

WE HAVE A 1-TON TRUCK IN STOCK

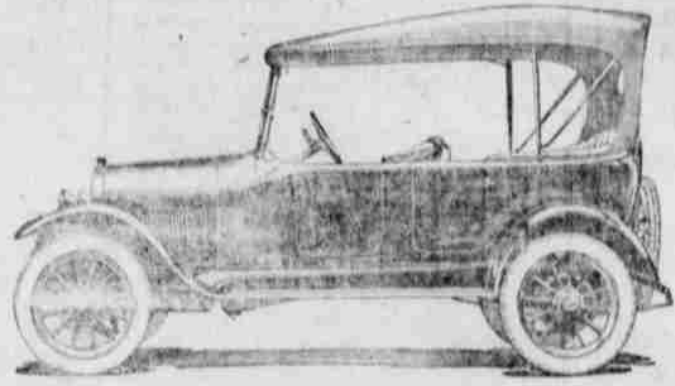
**NEWELL MOTOR SALES COMPANY**

We handle Mazda Lamps of all kinds and sizes



**Des Chutes Power Company**

Prineville, Ore.



The part that fine steels play in a

# Maxwell

THERE IS A DEFINITE REASON FOR THE BRILLIANT PERFORMANCE OF A MAXWELL CAR.

LIFT THE BONNET AND YOU SEE THE SIMPLEST OF ENGINES. EXAMINE CLUTCH AND GEARS, AND YOU SEE SUPREME SIMPLICITY.

THE DEFINITE REASON FOR MAXWELL PERFORMANCE, THE ENDURANCE IS IN THE FINE STEELS BUILT TO MAXWELL'S OWN FORMULAS, THAT COMBINE QUALITY AND RARE STRENGTH THAT DEFEY TIME AND THE REPAIR MAN.

THIS IS THE STORY OF THE MAXWELL THE REAL CAUSE FOR BRILLIANT PERFORMANCE AND LONG ENDURANCE. THESE DO NOT BURDEN THE ENGINE. THEY MAKE ITS TASK EASIER. THEY FLATTEN OUT A HILL FOR THE ENGINE.

THE COMBINATION OF LIGHT WEIGHT AND WONDERFUL STRENGTH—THE IDEAL OF MAXWELL CONSTRUCTION—IS ACHIEVED.

THAT IS WHY THE RISE OF MAXWELL HAS BEEN SO MARKED; WHY NEARLY 400,000 HAVE BEEN BUILT; WHY 100,000 ARE BEING CONSTRUCTED THIS YEAR; WHY THESE WILL FILL BUT 60 PER CENT OF THE DEMAND.

## OREGON DAILY JOURNAL

DAILY—50c.  
DAILY AND SUNDAY—65c

If you don't get your paper regularly, phone Red 431 and we will send one up by special messenger.

PRINEVILLE DRUG CO.  
Local Agent

## CHICHESTER'S PILLS



SOLD BY DRUGGISTS EVERYWHERE

**FEED DEALERS!**  
When you want pure cane STOCK MOLASSES in barrels, order from SHADY BROOK PRODUCTS COMPANY  
Portland, Oregon  
Pure, Hawaiian cane, heavy molasses, weighing nearly 12 pounds to the gallon, 950 lbs of sugar to the ton, equal to corn or barley in carbohydrates and feeding value at half the price. Every barrel guaranteed and branded "Shady Brook"—buy no other. Ask Oregon Agricultural College, Department of Animal Husbandry.  
SHADY BROOK PRODUCTS COMPANY  
812 Board of Trade Bldg., Portland, Oregon

## FISH BY-PRODUCTS FOR HOGS

Bureau of Animal Industry is Making Tests of Material as Protein Feed for Swine.

Co-operating with the bureau of fisheries, the bureau of animal industry of the United States department of agriculture is making tests of fishery by-products as hog feed. For several years these bureaus have been studying the use of fish meal as a protein feed for swine and the product has been found equal to high-grade tankage, of which the supply is inadequate. During the last fiscal year a new product known as shrimp bran was studied. The result of tests with it as compared with fish meal were favorable, the remainder of the ration being shelled corn and middlings.

## AUTOMOBILE SPRINGS

Big Line Made by the Vulcan Spring Co.

A better spring than comes on Your Car—For All Cars

COLLINS W. ELKINS

# Denby!

## Motor Trucks

The growing cost of labor, the general improvement in roads everywhere, the increase in construction work, and the growth of long distance cartage, are increasing the necessity for motor trucks of heavy tonnage. Where capacity loads can be maintained, the large truck gives the largest output per man and the lowest ton-mile cost.

The Denby 4-ton truck is designed and built to give the greatest possible results—to make it pay the owner maximum dividends. Nothing has been left undone that would increase its reliability, its road-ability and its economy in fuel, upkeep and maintenance.

Two of these trucks are running 24 hours every day, hauling lumber for Redford Brothers, into Redmond to the Tum-A-Lum yards there. The second of these was delivered last week after the first had been in use a year.

All Denby supplies and parts are now secured immediately from the factory branch, 10th and Davis Streets, Portland, Oregon.

Call on or write us about these trucks, one of the four tons capacity.

# Newell Motor Sales Co.

PRINEVILLE, OREGON

FOR SALE BY  
**Central Motor Sales Co.**  
PRINEVILLE, OREGON

## VICTORIOUS FORCES PURSUE CARRANZA

3500 Federal Troops Captured; President is Fugitive in Mountains.

Vera Cruz.—Mexican revolutionary forces commanded by General Pedro Sanchez and Higinio Aguilar, are pursuing President Carranza and the troops which fled with him from the battlefield near San Marco, on Friday. Government troops numbering 3500 were captured by the revolutionists, following the escape of Carranza.

Mexico City.—Venustiano Carranza, defeated in battle Friday in the vicinity of Rinconada, Vera Cruz, is fleeing into the mountains of Vera Cruz by way of Perote.

Revolutionary forces captured 2000 Carranza soldiers, 24 railroad trains, four pieces of artillery, about 200 machine guns, numerous automobiles, one airplane and large quantities of ammunition and gold and silver bars.

In his official report of the battle, General Guadalupe Sanchez, commander of revolutionary forces, which for a week have been opposing General Carranza's efforts to fight his way to the Gulf coast, said the fighting began at 10 o'clock Friday morning. After three hours' heavy battling Carranza and the leading members of his party fled from the trains in automobiles, escorted by about 500 cavalry. A revolutionary cavalry column was sent in pursuit.

"Pinkie" RENNOLDS  
AUCTIONEER

Telephone Redmond 2522  
Powell Butte, Oregon

A Classified Ad Brings Quick Results

# Used Cars

To make room for new car shipments now on the way we are making special prices on the following used cars:

- 3 FORD TOURING
- 1 FORD ROADSTER
- 1 FORD TRUCK

Come in and see them. We have just what you want

**CENTRAL MOTOR SALES COMPANY**

The Journal does Modern  
Printing on Short Notice