

Chevrolet

The cost of operating trucks depends to some extent upon the driver. If it is easy for him to drive he will operate it with greater efficiency, and thereby at a lower cost of maintenance.

The Chevrolet is an easy truck to drive. The controls are conveniently arranged as you will observe from the illustration below. And they are simple to operate. It is equipped with a good sized steering wheel, an adjustable windshield and adjustable head lights which are especially convenient for night driving.

A governor is also provided which limits the maximum speed of the truck to twenty-five miles an hour and can be locked to prevent changing by the operator.

Electric lights and starter of the highest type two-unit system are also provided, as well as dimmers; electric horn; odometer; side curtains for driver's seat; windshield; complete tool equipment.

WE HAVE A 1-TON TRUCK IN STOCK

NEWELL MOTOR SALES COMPANY

We handle Mazda Lamps of all kinds and sizes



Des Chutes Power Company

Prineville, Ore.

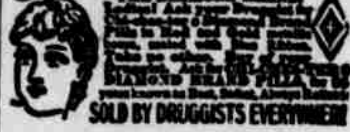
OREGON DAILY JOURNAL

DAILY—50c.
DAILY AND SUNDAY—85c

If you don't get your paper regularly, phone Red 451 and we will send one up by special messenger.

PRINEVILLE DRUG CO.
Local Agent

CHICHESTER'S PILLS



FEED DEALERS!

when you want pure cane STOCK MOLASSES

in barrels, order from SHADY BROOK PRODUCTS COMPANY

Portland, Oregon

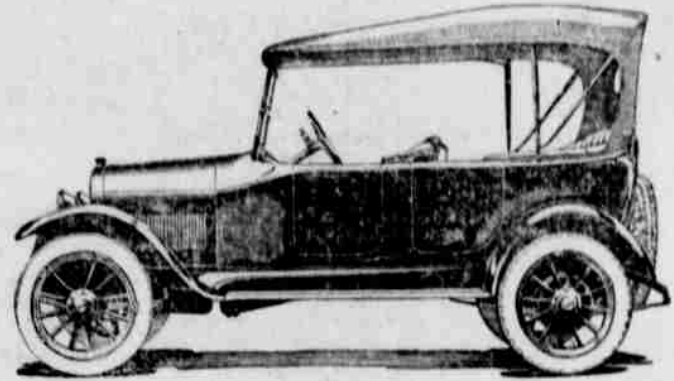
Pure, Hawaiian cane, heavy molasses, weighing nearly 12 pounds to the gallon, 950 lbs of sugar to the ton, equal to corn or barley in carbohydrates and feeding value at half the price. Every barrel guaranteed and branded "Shady Brook"—buy no other. Ask Oregon Agricultural College, Department of Animal Husbandry, SHADY BROOK PRODUCTS COMPANY, 812 Board of Trade Bldg., Portland, Oregon

Original Harmony.

A traveler on a walking tour in one of the northern counties came across a solitary old man who, seated in the doorway of his cottage, was fiddling away quite regardless of such trifling conventionalities as time and tune. The traveler listened a while in amusement and then inquired casually: "When do you tune your violin?" The reply came with refreshing ingenuousness: "I don't tune it—it don't sound right if I do."

Will to Do is Imperative.

Thoughts of doubt and fear never accomplished anything, and never can. They always lead to failure. Purpose, energy, power to do and all strong thoughts cease when doubt and fear creep in. The will to do springs from the knowledge that we can do.—Allen.



The part that fine steels play in a

Maxwell

THERE IS A DEFINITE REASON FOR THE BRILLIANT PERFORMANCE OF A MAXWELL CAR.

LIFT THE BONNET AND YOU SEE THE SIMPLEST OF ENGINES, EXAMINE CLUTCH AND GEARS, AND YOU SEE SUPREME SIMPLICITY.

THE DEFINITE REASON FOR MAXWELL PERFORMANCE, THE ENDURANCE IS IN THE FINE STEELS BUILT TO MAXWELL'S OWN FORMULAS, THAT COMBINE QUALITY AND RARE STRENGTH THAT DEFY TIME AND THE REPAIR MAN.

THIS IS THE STORY OF THE MAXWELL THE REAL CAUSE FOR BRILLIANT PERFORMANCE AND LONG ENDURANCE. THESE DO NOT BURDEN THE ENGINE. THEY MAKE ITS TASK EASIER. THEY FLATTEN OUT A HILL FOR THE ENGINE.

THE COMBINATION OF LIGHT WEIGHT AND WONDERFUL STRENGTH—THE IDEAL OF MAXWELL CONSTRUCTION— IS ACHIEVED.

THAT IS WHY THE RISE OF MAXWELL HAS BEEN SO MARKED; WHY NEARLY 400,000 HAVE BEEN BUILT; WHY 100,000 ARE BEING CONSTRUCTED THIS YEAR; WHY THESE WILL FILL BUT 60 PER CENT OF THE DEMAND.

FOR SALE BY

Central Motor Sales Co.

PRINEVILLE, OREGON

Denby!

Motor Trucks

The growing cost of labor, the general improvement in roads everywhere, the increase in construction work, and the growth of long distance cartage, are increasing the necessity for motor trucks of heavy tonnage. Where capacity loads can be maintained, the large truck gives the largest output per man and the lowest ton-mile cost.

The Denby 4-ton truck is designed and built to give the greatest possible results—to make it pay the owner maximum dividends. Nothing has been left undone that would increase its reliability, its road-ability and its economy in fuel, upkeep and maintenance.

Two of these trucks are running 24 hours every day, hauling lumber for Redford Brothers, into Redmond to the Tum-A-Lum yards there. The second of these was delivered last week after the first had been in use a year.

All Denby supplies and parts are now secured immediately from the factory branch, 10th and Davis Streets, Portland, Oregon.

Call on or write us about these trucks, one of the four tons capacity.

Newell Motor Sales Co.

PRINEVILLE, OREGON

A Classified Ad Bring Quick Results

Used Cars

To make room for new car shipments now on the way we are making special prices on the following used cars:

- 3 FORD TOURING
- 1 FORD ROADSTER
- 1 FORD TRUCK

Come in and see them. We have just what you want

CENTRAL MOTOR SALES COMPANY

Shellac.

Shellac is the joint product of insects and plants and comes from India. The lac insects are about 1.25 of an inch long, a bright red in color. They suck the juices of plants, digest them and exude them in the form of resin, which soon encases the whole insect. When the young insects have swarmed out, the resin is scraped from the branches, ground, washed, mixed with colophony and orpiment, cooked slowly and drawn out into the thin sheets we know as shellac.

Not a Joshua.

Two little brothers had quarreled and after their supper their mother endeavored to re-establish friendly relations between them, finally quoting to them the Bible verse, "Let not the sun go down upon your wrath." Turning to Bernard, the elder, she said: "Now, Bernard, are you going to let the sun go down on your wrath?" Bernard squirmed a little as he looked into her face. "Well, how can I stop it?" he asked.

Washington's Ice Melted.

George Washington put up ice. In January, 1775, his diary showed he filled a dry well under a summer house and another well in a cellar. Under date of June 5 he wrote in his diary: "Opened the well in my cellar in which I had laid up a store of ice, but there was not the smallest particle remaining. I then opened the other repository, in which I found a large store."

Forceful Warning.

A road sign in New York says, "Go Slow and Save Ten Dollars."

"Pinkie" RENNOLDS

AUCTIONEER

Telephone Redmond 2522
Powell Butte, Oregon

SCALE BOOKS—Neatly printed and bound. Send \$1.00 to the Journal and one will be mailed you, postage paid.

The Journal does Modern Printing on Short Notice