

Huckleberry Finn

AT THE LYRIC

FRIDAY AND SATURDAY
MAY 7TH AND 8TH

A PLAY FOR CHILDREN FROM SEVEN TO SEVENTY

WOMAN'S COLLEGE STUDENTS PLAN NOVEL CUSTOM ORGANIZE "SUNSHINE GUARD" AT CAMPUS SUN DIAL

OAKLAND (Special)—The "Sunshine Guard" has been established at Mills College. Miss Stella Riggs of Portland, Oregon, has the honor of being the first to take her position at the famous college sun dial on the oval.

The "Sunshine Guard" is the idea of Mills students to serve as a reminder of "The Mills of Tomorrow." The needs of this woman's college will be met when the two million dollar endowment fund has been raised and until that time the "Sunshine Guard" watch will keep its vigil.

The 450 young women students have agreed to keep constant guard at the sun dial from the first class period in the morning until sundown. This will be accomplished by relays and the various dormitories will be given certain weeks for this responsibility. It will be arranged so that the half hour, or hour, spent by each student will not be lost time, but will be spent in preparing for the class room. If necessary a kiosk will be built to accommodate the "Sunshine Guard."

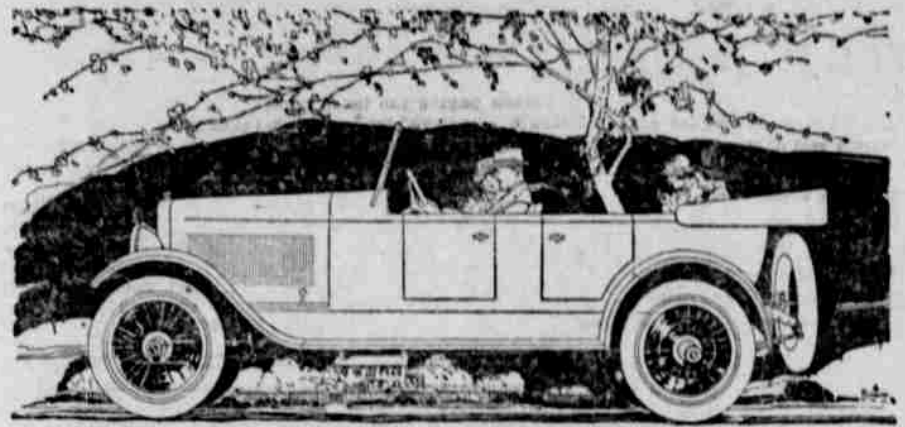
To all students and visitors who inquire the time, it is the duty of the special guard to reply "endowment time."



Miss Stella Riggs, of Portland, Oregon, first of the "Guard."

CHANDLER SIX

Famous For Its Marvelous Motor



Everybody Likes The Chandler Dispatch

THE popularity of the Chandler Dispatch, which has grown by leaps and bounds and reaches to every corner of the world, is based not only on the grace of its trim design and its beautiful Rainbow Blue finish, but is due quite as much to the standard Chandler chassis upon which it is mounted.

The Dispatch attracts young folks and older ones alike. It is a great favorite with young women. All love to drive it, and the charm of its beauty gives them additional satisfaction in its ownership.

The Chandler Dispatch seats four persons with utmost comfort. The driver's position is restful. The cushions are deep, well tilted and trimmed in the best of genuine hand buffed leather.

With its wonderful flexibility of power, its ease of driving and real comfort, characteristic of all Chandler models, everybody likes the Dispatch.

SIX SPLENDID BODY TYPES

Seven-Passenger Touring Car, \$1995 Four-Passenger Roadster, \$1995
Four-Passenger Dispatch Car, \$2075
Seven-Passenger Sedan, \$2995 Four-Passenger Coupe, \$2895 Limousine, \$3495
(All Prices f. o. b. Cleveland, Ohio)

INLAND AUTO COMPANY

CHANDLER MOTOR CAR COMPANY, CLEVELAND, OHIO

Shaving A Pleasure

When you use our supplies. We Have Razors in Gillett, Gem, Durham-Duplex sets and extra blades. Strops and hones, brushes, soap cream, toilet lotions, powder cream, mirrors and all supplies for a clean close comfortable shave. Look our line over.

HOWARD DRUG COMPANY

GOVERNMENT SPENDS \$18,000,000 PER DAY

Washington.—It cost \$5,028,176,000 to run the government for the first nine months of the fiscal year, and taking this as an average, treasury officials state that the total government expenditures for the 12-month period ending June 30, next, would reach approximately \$6,750,000,000 or nearly \$18,000,000 a day.

Further appropriations by congress and the soldier bonus, which is estimated will cost the government \$1,000,000,000, are not included. Last December Secretary Glass figured that running expenses would amount to \$6,097,237,000, but he did not take into account the loss in government operation of railroads.

The principal items which go to make up the nine months' expenses are: War department \$1,301,605,000; railroad administration, \$776,590,000; navy department, \$621,364,000; shipping board, \$433,100,000, and interest on the public debt, \$844,923,000. Congress has spent for its own maintenance \$15,309,000, and the executive offices cost \$6,177,000.

SHOE RETAILERS BLAMED

Tanners and Manufacturers Also Profiteering, Says Economist.

Washington.—T. M. Robertson, an economist, employed by the federal trade commission told the senate manufacture committee that retail dealers were principally responsible for high prices of shoes. Tanners and manufacturers, he said, have taken more profits than they should, but the retailers have imposed heavier burdens upon the public than the others.

Mr. Robertson said the most effective remedy would be for the public to refuse to patronize merchants who charge excessive prices.

Ohio Women May Not Vote. Columbus, Ohio.—Women will not be permitted to vote at the presidential primary election in Ohio April 27. Anti-suffragists called a referendum on the law, which would have permitted the women to vote at the presidential preference this year. The referendum will be held at the November election.

Standard Flour



PERFECT BREAD ALWAYS when our flour is used with ordinary care. In fact, it is hard to make poor bread with it. Try a sack and enjoy the most delicious wheaten flavored bread that ever appeared on your table. Don't delay. Do it to-day.

Prineville Flour Mills

We indorse the Good Roads measures to be voted on at the Primaries on May 21. We urge that you vote for them.

TUM-A-LUM LUMBER CO.
Prineville, Oregon