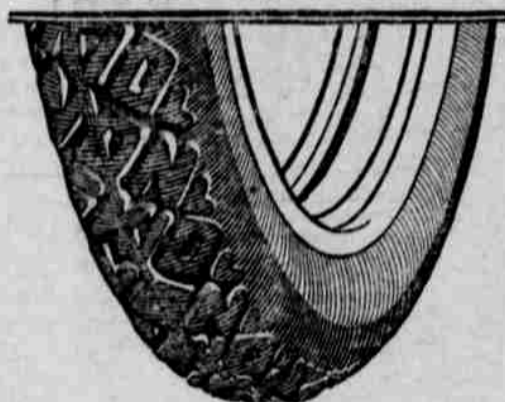




**The \$7,000,000
3 1/2 inch
Tire**



Most miles per dollar is a Firestone pledge to the big car owner as well as to owners of light cars. See the new standard oversize Firestone Cord.

A special \$7,000,000 plant was built and a specialized organization was gathered together to make this tire exclusively.

Such specialization is typical of Firestone.

The plant capacity is 16,000 a day.

The results are all in favor of the car owner:

Quality at low cost; strength and scientific balance; car protection; long life; most miles per dollar.

Stop tire shopping. Buy Firestones.

Firestone

For Sale By LAKIN HARDWARE, "Where it Pays to Trade"

Service WINS Confidence

The spirit of the west is the spirit

OF WEST COAST SERVICE

It is virile and aggressive. It includes strength and a healthy enthusiasm. Above all other things Service is the dominant factor.

The WEST COAST LIFE has a special service for every life insurance need.

STANDARD RATES—

—SUPER SERVICE



Excerpt from the Report of Insurance Department of Oregon, Washington and California.

"As a result of this examination the company is found to be sound, aggressive and responsible. Its attitude toward policy holders has been liberal and conscientious. Its officers are men of standing and ability."

ANNUAL STATEMENT, DECEMBER 31, 1919

ADMITTED ASSETS		LIABILITIES	
Real Estate Owned	\$ 78,453.20	Reserve on all outstanding policies	\$4,053,324.93
Loans on Real Estate (secured by pledge of property appraised at \$3,700,000)	1,055,424.50	Reserve for losses incurred	66,014.60
Collateral Loans	46,960.00	Interest and premiums paid in advance	19,517.48
Loans to Policyholders	759,578.75	Reserve for Taxes Payable during 1920	41,513.56
Premium Notes and Policy Liens	61,569.61	All other Liabilities	13,159.79
Bonds and Stock Owned	2,175,216.11	Capital Stock	\$250,000.00
Net premiums outstanding and deferred	226,501.34	Assigned Surplus (Deferred and Annual Dividend Funds)	153,316.51
Interest due and accrued	42,406.90	Unassigned Surplus	100,906.23
Cash in Banks and in office	174,474.29	Surplus to Policyholders	504,722.74
Other Assets	77,567.40		
Total Admitted Assets	\$4,698,252.10	Total	\$4,698,252.10

INSURANCE IN FORCE—PAID-FOR BASIS—\$39,558,166.00

INCREASE MADE IN 1919

In Insurance in force	\$4,690,478— 13.45 per cent
In Admitted Assets	566,734— 13.73 per cent
In Unassigned Assets	53,225—111.63 per cent

—Such a company with business enough in force and covering a large enough territory to give it the benefit of the law of average without adding new business can go on and on and pay every loss and every endowment in full until the last claim is paid. Genuine old line life insurance is as exact as the multiplication tables—scientific.

West Coast Life, San Francisco

CENTRAL OREGON AGENCY

TELEPHONE 164

H. H. WILCOX, General Agent.

DOLLY HODGES, Local Mgr.

Announcing the Arrival of the Allen 43

A Car of Proven Superiority

M ECHANICALLY AND IN OUTWARD APPEARANCE, THE ALLEN 43 STANDS SUPERIOR IN THE LIGHT WEIGHT, MEDIUM PRICE CLASS. BY ACTUAL TEST, WITH YOURSELF AT THE WHEEL, YOU CAN PROVE TO YOUR SATISFACTION THAT THE NEW ALLEN WILL MOST FULLY MEET YOUR SOCIAL AND BUSINESS NEEDS. ENGINE — CONTINENTAL RED SEAL; STARTING AND LIGHTING AUTO-LITE, TWO UNIT SYSTEM; IGNITION, CONNETICUT SYSTEM; COOLING THERMO SYPHON; LUBRICATION, PRESSURE-SPLASH; CLUTCH, BORG & BECK SINGLE PLATE DRY DISK; DRIVE, FULL HOTCHKISS DRIVE; FUEL SYSTEM, STEWART VACUUM FUEL FEED SYSTEM; TOP, ONE MAN TOP. STANDARD EQUIPMENT. STARTER, DOUBLE BULB HEAD LAMPS KLAXON HORN, STEWART SPEEDOMETER, BOYCE MOTO-METER, EXTRA TIRE RIM, VENTILATING WIND SHIELD, ROBE RAIL, TOOL KIT, TIRE PUMP AND JACK.

PRICE F. O. B. BEND

\$1695

Central Motor Sales Co.

Prineville, Oregon

ASSOCIATED WITH THE PIONEER GARAGE OF BEND

Lumber

Material is again coming in from the mill and your wants can now be more readily supplied

GET READY FOR IRRIGATION

Place orders for whatever you may need so if not in stock, we can supply your wants. If you need assistance in determining just what particular line of material is needed, call on us or upon any of the following carpenters or painters:

R. W. WALLACE
W. H. LOHNS
H. HOLMAN
E. J. BARRETT
NELSON & PUGH

J. W. FINCHER
R. G. SMITH
A. B. ROLLER

FREE
HOUSE
PLANS

**TUM-A-LUM LUMBER
COMPANY**
Successor to SHIPP & PERRY

PRINEVILLE
REDMOND, CULVER,
MADRAS, GATEWAY

PLANNERS AND MATERIALERS OF HOMES AND FARM BUILDINGS