

Crook County Journal

BY GUY LAFOLLETTE

Entered at the postoffice at Prineville, Oregon, as second-class matter.

PUBLISHED EVERY THURSDAY

Price \$2.00 per year, payable strictly in advance. In case of change of address please notify us at once, giving both old and new address.

THIS PAPER REPRESENTS FOREIGN ADVERTISING BY THE



GENERAL OFFICES NEW YORK AND CHICAGO BRANCHES IN ALL THE PRINCIPAL CITIES



PRINEVILLE CITY RAILWAY

Time Table No. 5 Effective 12:01 A. M. Sunday, February 29, 1920

Table with 4 columns: Stations, Motor, Motor, Mixed. Rows for West Bound and East Bound routes.

TRADE IN OUR TOWN

WHAT ABOUT HOOVER?

One of the safest predictions today is that Hoover will be the next president of the United States. The trend of things point that way and anyone who has made a study of Hoover, the man, will not question his ability as one of the big business men of the world.

American, which is one of his best qualifications. The only question in our minds about the election of Hoover is whether he gets the nomination. He is not a man who is liked by the big interests in many quarters, but is very popular with the people, and his election, in our estimation would be assured with his nomination.

WHERE IS THE SOLUTION?

One of the most interesting developments at the Stockmen's meeting Saturday evening was the statement made by Mr. Wuraweller, or concerning him in his presence, to the effect that by the most careful management he and his sons had failed to make any money in the cattle business for the past three years.

If this is true of the Wurawellers, which it no doubt is, it is more than likely true of practically all the cattle men in this part of the country, because there is no better business men here than they, and there would be no losses resulting from poor business methods, or from careless handling of livestock.

They own their ranges except what they have permits for in the mountains, they raise a better grade of stock than most cattle men do, and as a rule sell them younger and at a better price per pound than most cattle men get.

If, under these conditions, there is no money in the business, what can the average cattle man do, where he buys much hay, and rents land for pasturage? The fact is that there is a very narrow margin, if any, in the cattle business at present prices and under present conditions, and many of the best business men in the business are planning to get out with what they have saved, while others will be forced out, many of them without funds to enter other lines of business.

FOR SUPERINTENDENT OF SCHOOLS

Mrs. Mary V. Charlton, of Powell Butte, is this week announcing her candidacy for the republican nomination for Superintendent of Schools. Mrs. Charlton is the first woman candidate to get into the game in this contest, and she says she is counting on a strong vote from the women at the primary.

HOELSCHER OUT OF COMMISSIONER RACE

Fred F. Hoelscher is announcing today that he is not a candidate for the office of county commissioner. Although he has been the only candidate for the office, he says that private business affairs are such that it would be impossible for him to care for the office were he elected, and for that reason he is withdrawing his name, before it is too late for someone else to file.

REAL ESTATE TRANSFERS

E. N. Davis to Warren Brown, wd. nw. nesw, w.se, 17-16-15, \$10. rev. 1.5 Probate Harley Saunders Estate. G. H. Crosswhite to Omar Wilson wd. tract 5-15-16, \$125. Frank J. Smith to M. Angland, wd. ssw, 27, nwnw, 34-16-14, \$100 rev. 3.

Hanna Peterson to Ben D. Fox, wd. s.se, nsw, se, 32-15-15, \$10, rev. .50. H. W. Gray, to Grizzly Livestock & Land Co., wd, e.nw, swnw, nsw, 7-13-15, \$808.50, rev. 1. L. A. Hill to same, wd., w.nw, nsw, 8 e.ne, new, nwnw, nesw, 7-13-15, \$1, 600, rev. 2. M. E. Buchanan to same, wd. saw, 5 se, se, 117 6 ft. 1, 7-13-15; \$315. rev. 2. U.S. to Fred Myers, pat., nwnw, e.nw, swnw, 23-21-24. O. & W. C. Co. to D. J. Evans wd. s. se, 11-14-17, \$1200, rev. 1.50. Sarah Newell pat. from U.S., saw, e.nw, new, 3-13-17, April 3, 1920. W. O. Crain to V. A. Bell wd. tract 5-15-16, \$400., rev. 50. U. S. to Hanna Peterson, pat., s.se, nsw, se, 32-15-16. I. F. SHOWN to N. C. Dee wd. lts, 4, b. 2 newsoms add, \$1500, rev. 1. M. L. Hunsaker to O. C. Gray wd, e, b5, Newsoms add to Prineville, \$1.

The Interchurch conference to be held in Prineville, on April 11 and 12 is really a community affair said Rev J. W. Cabeen, the local convenor who is in charge of the meeting in this county.

FOR STATE REPRESENTATIVE

I hereby announce myself a candidate for re-election to the office of State representative subject to the approval of the Republican voters in Crook, Jefferson, Grant, Lake, Klamath and Deschutes counties. If renominated and elected to fill one of the two places for my fourth session I will continue to serve each of the counties of the District to the best of my ability. DENTON G. URDICK. (Paid Adv.) State Representative.

FOR SHERIFF

I hereby announce my candidacy for the nomination for Sheriff of Crook County on the Democratic Ticket, subject to the approval of the voters at the primary election. O. H. OLSON.

FOR COUNTY CLERK

I will be a candidate for the nomination of County Clerk on the Democratic ticket at the Primary election May 21, 1920. Paid Adv. 18tfc ASA W. BATTLES

Your Money BUYS 100 PER CENT VALUES If you trade with us. You pay for no clerk hire or city tax. We have none. Your cost is the lowest wholesale price plus our small per cent profit. Our interests are mutual. HOMER NORTON Post, - - - - Oregon

FOR HIRE HUDSON SUPER SIX REASONABLE RATES ON SUNDAY EXCURSIONS TO THE DAM THEATER AND DINNER PARTY CALLS ANSWERED PROMPTLY "Doc." MAJ. W. RAREY HEADQUARTERS CENTRAL MOTOR SALES CO. Phone Red 641

FOR COUNTY SUPERINTENDENT

I will be a candidate for the nomination of County Superintendent on the Republican ticket at the Primary election May 21, 1920. Paid Adv. 18tfc J. E. MYERS

FOR SHERIFF

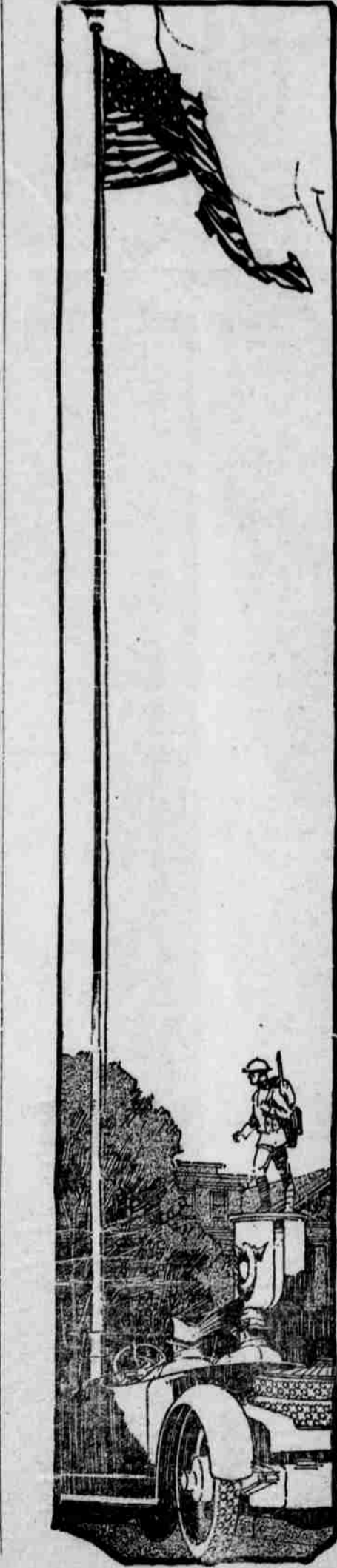
I will be a candidate for the nomination for Sheriff of Crook county on the Republican ticket, at the primary election, May 21, 1920. Paid Adv. 18tfc JOHN COMBS.

FOR ASSESSOR

I will be a candidate for the nomination of County Assessor on the Democratic ticket at the Primary election May 21, 1920. Paid Adv. 18tfc H. A. FOSTER.

We handle Mazda Lamps of all kinds and sizes Des Chutes Power Company Prineville, Ore.

Mr. Farmer We need your business. We have a stock of real up-to-date groceries. We know our prices are right and the quality better. Give us a trial. We buy your produce for cash if desired. Compare our prices with those of other dealers. MICHEL GROCERY COMPANY Price Quality Service



PUT ON Firestones ALL ROUND That's the best advice we can give the man who wants longest mileage and most riding comfort. THIS IS THE FIRESTONE YEAR No other tire is making such extraordinary mileage records. We have all sizes--- Cord AND Fabric Lakin H'dware "Where it Pays to Trade" Firestone