


WANTED
 VEAL, HOGS, MUTTON, BEEF,
 CHICKENS, TURKEYS, DUCKS,
 GESE, EGGS, HIDES, BUTTER,
 AND JACKRABBITS. GIVE US A
 TRIAL. HIGHEST MARKET PRICE
 GUARANTEED. PROMPT RE-
 TURNS
GULICKSON & CO.
 Established 1912
 109 Front St. Portland, Ore.




EASIEST THING IN THE WORLD
CALL BLACK 303
 FOR LIGHT OR HEAVY
TRUCK SERVICE

Morse Transportation Comp'y
 PRINEVILLE, OREGON

IRELAND'S
City Transfer & Express
 Auto Delivery to all Parts of the City and Vicinity
 Phone me for quick service at Hugh Lakin's
Red 951

Prineville Machine Shop
 The Best Equipped Machine Shop in this part of the
 State. We are prepared to handle anything in our
 line promptly. Quality of work is the very best.
PRINEVILLE MACHINE SHOP
 E. G. Hodson, Proprietor
 Prineville, Oregon

"Now Is the Time to Do It"
 says the Good Judge
 Go to real tobacco—
 the small chew with
 the rich tobacco taste
 that lasts a long time.
 It will cost you less to
 chew than ordinary
 tobacco. Any man
 who uses the Real
 Tobacco Chew will
 tell you that.
 Put Up In Two Styles
RIGHT CUT is a short-cut tobacco
W-B CUT is a long fine-cut tobacco
 Weymoe-Broton Company, 1107 Broadway, New York City



The Famous Prineville
Saddle
 At Farrand's Repair Shop. Harness, Saddles,
 Shoes and Auto Tops Repaired.

Is Your Money Supporting the
Government?
 At this critical period in our history our manufacturers are
 offering their mills and our young men are offering their services
 to the United States government. Would you like to do your
 share and help, by putting your money where it will support the
 new Federal Reserve Banking System, which the government
 has established to stand back of our commerce, industry and
 agriculture?
 You can do this by opening an account with us as part of every
 dollar so deposited goes directly into the new system, where it
 will always be ready for you when wanted.
 Member Federal Reserve System
FIRST NATIONAL BANK

The Journal does Modern
 Printing on Short Notice

**TOWN STRIKES INTO
 REVOLT WAS PLAN**

It Revealed in Country-Wide
 Roundup of More Than
4000 Radicals.

Washington.—Radical leaders planned to develop the recent steel and coal strikes into a general strike and ultimately into a revolution to overthrow the government, according to information gathered by federal agents in the wholesale round-up of members of the communist and communist labor parties.

A definite programme to expand the two labor disturbances to blot out every semblance of organized government, was disclosed in evidence gathered in the raids. This data, officials said, tended to prove that the nation-wide raids had nipped the most menacing revolutionary plot yet unearthed.

The greatest roundup of radicals in the nation's history was conducted by the government acting through department of justice agents in 35 cities, stretching from coast to coast.

The raids were conducted particularly against Communist and Communist Labor groups of radicals.

Figures received showed that a total of 2835 aliens were held with evidence which federal agents believed was sufficient to warrant deportation. Approximately 4500 persons were taken into custody in the raids.

Raids were conducted in the following cities:

New York, Baltimore, Boston, Buffalo, Chicago, Cleveland, Denver, Des Moines, Detroit, Grand Rapids, Hartford, Indianapolis, Jacksonville, Kansas City, Los Angeles, Louisville, Milwaukee, Newark, Omaha, Philadelphia, Pittsburgh, Portland (Maine); Portland (Oregon); Providence, San Francisco, Scranton, Spokane, St. Louis, St. Paul, Springfield, (Mass.); Syracuse, Toledo and Trenton.

**DRY ENFORCEMENT
 ACT CONSTITUTIONAL**

Washington.—The supreme court declared constitutional sections of the Volstead prohibition enforcement act prohibiting the manufacture and sale of "beer, wine or other intoxicating malt or vinous liquors, containing one-half of one per cent or more of alcohol."

Beer containing 2.75 per cent of alcohol is illegal, under the wartime prohibition act, the supreme court decided.

The important feature of the decision is that the court upheld the action of congress in declaring intoxicating and preventing the sale of all beverages containing one half of 1 per cent or more of alcohol, by volume, with the exception of home made cider and wine.

The decrees of the court may be taken as a definition of intoxicating liquor that will stand under constitutional prohibition also, because of the definite statement that congress in providing for the enforcement of prohibition can prescribe just what makes a beverage intoxicating.

The case was an appeal from the New York federal courts, brought by Jacob Ruppert, a brewery corporation.

LOANS TO REBUILD EUROPE

Step to Assist Exporters in Getting Materials to Europe.

Washington.—Appeals of American business for aid in financing the reconstruction of Europe were answered when the war finance corporation announced that four loans, aggregating \$17,000,000, soon would be made to commercial interests which will employ the money in exporting needed materials to the stricken nations.

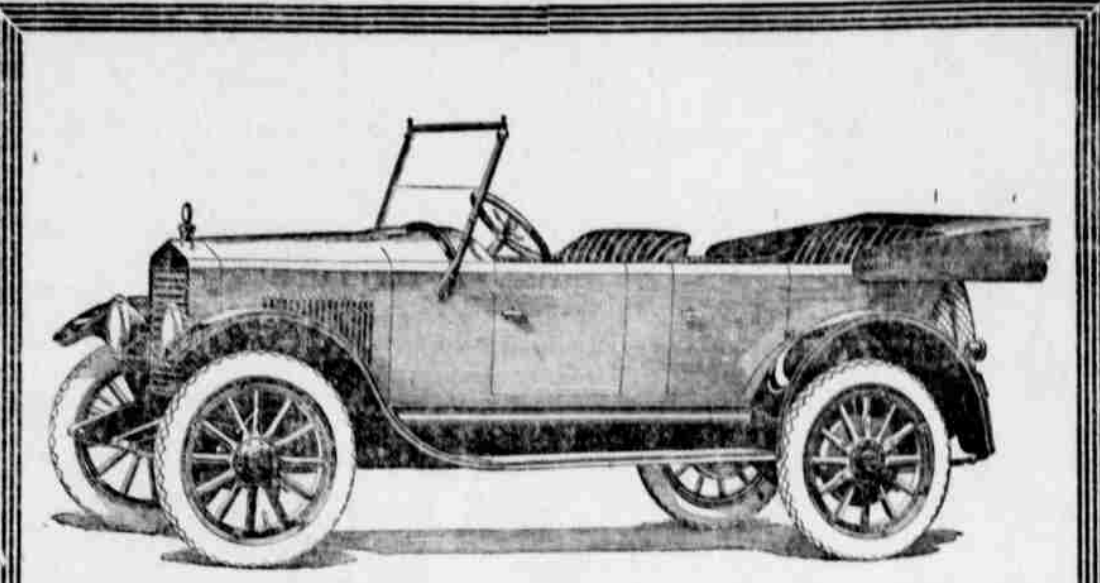
Two loans, each of \$5,000,000, have been arranged to finance the exportation of locomotives and agricultural machinery. The locomotives will go to Poland and the agricultural machinery to England, France and Belgium.

A third loan for \$5,000,000 will go to an electrical machinery corporation and will be used for rehabilitation of stricken sections of Belgium and France.

An advance of \$2,000,000 also is included in the total of \$17,000,000 to go to several banks which will furnish funds for the exportation of machinery to reconstruct steel mills in France.

Europe is Sending Cheaper Domestic.

Chicago.—The day of the \$7 a week servant girl who would cook, sweep, mind the baby, wash dishes, run the laundry and do odd jobs of calculating in her spare time, is coming again, according to Miss Elizabeth Moynihan of the Travelers' Aid society. Every boat from Europe is bringing hundreds of Scandinavian, Irish, English, and Italian girls eager to do house work, Miss Moynihan says.



Now Big Car Owners

In it They Find Wanted Large Car Qualities, with Advantages Exclusive to Small Cars.

Turn to Essex

Consider how many, who formerly bought only large, high-priced cars, now own an Essex. It proves that size was not what they sought. They paid big premiums for qualities that small cars did not offer. These are people with wide motor experience. They prize such light car advantages as economy and nimbleness. But heretofore, only large, costly cars met their other requirements of performance, riding ease and appearance.

compared to another small car. Men inevitably seek comparison for Essex qualities among the high-priced cars. There only, do they find parallels by which to describe it.

They match its acceleration against certain makers noted for that quality. Its speed they compare to the swiftest. Every community has its story of how the Essex, "in high," tops some local "bogy" hill.

And now that it has become so well known, men are making it the performance standard. It is not unusual to hear some say of a high-priced car they admire: "Why, it climbs like an Essex," or "it gets away at crossings with the Essex cars."

Now They Buy the Essex

And they are chief among Essex enthusiasts. It meets their demands for a complete car. Accustomed to fine car qualities, they appreciate the best standards of cars in higher price range.

The Essex was designed to embody the wanted qualities of the finest cars in a size it would be possible to build at a moderate price.

Examine the Essex Ride in It

Your first glance will not note the distinctive finish, the materials and workmanship. See the car even in the smallest details.

Its solid, compact assembly, that has been proved in every trying test will satisfy you of endurance powers.

Then take a ride in the Essex. It will reveal qualities that charm you as they have nearly a million others.

You will agree that only big production permits the sale of such a car at the Essex price. Though they are being built at the rate of 20,000 a year, the demand exceeds supply.

You can be sure of an Essex when you want it only by placing your order now.

Such Is the Car You Want

Everywhere you hear how Essex meets those exactions. Consider just what all this comment and praise of Essex means. Surely no other car ever excited such unrestrained enthusiasm.

And note this fact. Except in size and economy you have probably never heard the Essex

Collins W. Elkins

PRINEVILLE, OREGON

CHAS. S. EDWARDS
 Physician and Surgeon
 Office 217 Main St.
 First door south Prineville Drug
 Company
 Office phone Blk 201. Res 106

THOMAS CRONIN
 of Prineville, Oregon, who on November 15, 1919, made Homestead Entry No. 013712, for NW 1/4, SE 1/4, SW 1/4, NE 1/4, S 1/2 NW 1/4, and SW 1/4 Section 3, Township 17 South, Range 18 East, Willamette Meridian, has filed notice of intention to make final three year proof, to establish claim to the land above described, before Lake M. Bechtell, U. S. Commissioner, at Prineville, Oregon, on the 28th day of January, 1920.

Claimant names as witnesses:
 Thomas Ferguson, of Post, Oregon; Edward A. McDonald, Charles L. Ross, George Setzer, of Roberts, Oregon.

H. FRANK WOODCOCK,
 Register

NOTICE TO CREDITORS

NOTICE is hereby given by the undersigned, the executor of the Estate of Julia Ann Blevins, deceased, to all creditors of said deceased and to all persons having claims against said Estate to present the same with the proper vouchers to the undersigned at his office in Prineville, Oregon, within six months from the date of the first publication of this notice.

Dated and published the first time December 25, 1919.

M. R. ELLIOTT, Executor of the Estate of Julia Ann Blevins, deceased.

013712
NOTICE FOR PUBLICATION

Department of the Interior, U. S. Land Office, at The Dalles, Oregon, December 16, 1919. Notice is hereby given that

NOTICE TO CREDITORS

In the County Court of the State of Oregon for Crook County.

In the matter of the estate of George Millican, deceased.

NOTICE is hereby given that the undersigned have been appointed and have qualified as executor and executor, respectively, of the estate of George Millican, deceased, and all persons having claims against said estate are hereby notified to present the same, properly verified as required by law, to the undersigned

THE
OCHOCO MARKET
 IS NOW READY TO SUPPLY YOUR NEEDS IN ALL KINDS OF
 FRESH AND CURED MEATS
 FRUITS, VEGETABLES, AND PRODUCE—IN SEASON
F. T. COX
 PRINEVILLE, OREGON

at the office of Jay H. Upton in Prineville, Oregon, within six months from the date of the publication of this notice.
 Date of first publication, December 18, 1919.
ADA B. MILLICAN, executor of the estate of George Millican, deceased.
G. WALTER MILLICAN, executor of the estate of George Millican, deceased. 6 1/2 c
014306-017640
NOTICE FOR PUBLICATION
 Department of the Interior, U. S. Land Office, The Dalles, Oregon, December 9, 1919. NOTICE is hereby given that
IVAN A. JONES
 of Prineville, Oregon, who on January 4, 1915 made Homestead Entry No. 014306 and on November 7, 1919, made Additional Entry No. 017640 for W 1/2 E 1/2, E 1/2 W 1/2 SW 1/4 NW 1/4, W 1/2 SW 1/4, Sec. 11; SE 1/4 NE 1/4, E 1/2 SE 1/4 Section 11; and E 1/2 NE 1/4 of Section 23, Township 13 South Range 15 East, Willamette Meridian, has filed notice of intention to make final three year proof to establish claim to the land above described before Lake M. Bechtell, U. S. Commissioner at Prineville, Oregon, on the 17th day of January, 1920.
 Claimant names as witnesses:
 Roy Stuart, William H. Porter, Stephen E. Jones, Harry G. Webb, all of Prineville, Oregon.
H. FRANK WOODCOCK,
 Register