

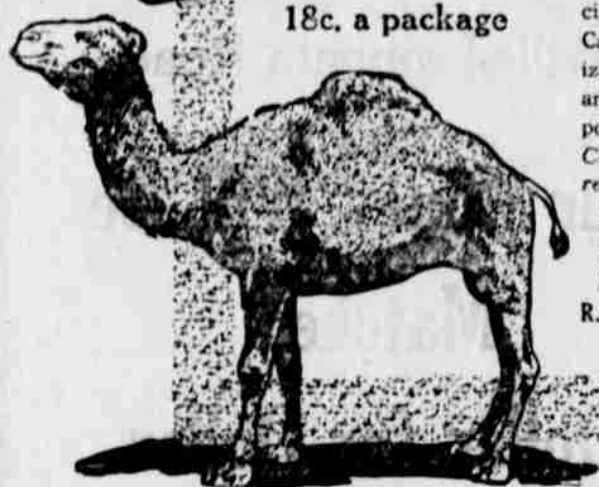
Camel CIGARETTES

CAMELS supply cigarette contentment beyond anything you ever experienced! You never tasted such full-bodied mellow-mildness; such refreshing, appetizing flavor and coolness. The more Camels you smoke the greater becomes your delight—Camels are such a cigarette revelation!



Everything about Camels you find so fascinating is due to their quality—to the expert blend of choice Turkish and choice Domestic tobaccos.

You'll say Camels are in a class by themselves—they seem made to meet your own personal taste in so many ways! Freedom from any unpleasant cigarette after-taste or unpleasant cigarette odor makes Camels particularly desirable to the most fastidious smokers. And, you smoke Camels as liberally as meets your own wishes, for they never tire your taste!



18c. a package

You are always keen for the cigarette satisfaction that makes Camels so attractive. Smokers realize that the value is in the cigarettes and do not expect premiums or coupons!

Compare Camels with any cigarette in the world at any price!

Camels are sold everywhere in scientifically sealed packages of 20 cigarettes or ten packages (200 cigarettes) in a glassine-paper-covered carton. We strongly recommend this carton for the home or office supply or when you travel.

R.J. REYNOLDS TOBACCO COMPANY
Winston-Salem, N. C.

LIVE STOCK

ECONOMICAL FEED FOR SHEEP

Alternating Pasturage Advised to Keep Plants Growing and Prevent Stomach Worms.

(Prepared by the United States Department of Agriculture.)

Because of the importance of economical feeding in profitable sheep raising, the United States department of agriculture directs special attention to opportunities for growing forage crops as a feed for lambs and ewes.

Early spring pasturages of wheat or rye may be used at the start. These provide succulent green feed appetizing to the ewes and lambs. Overpasturing, however, must be avoided when these crops are later to be used for grain. Where it is possible to keep the rye or wheat pasture about 1 1/2 to two inches high, the lambs and ewes seem to relish it more and will consume larger amounts. Oats and Canadian field peas may be sown together early in the spring at the rate of 1 1/2 bushels of field peas and 1 1/2 bushels of oats to the acre. This crop should then be ready when it is time to take the flock off the rye or wheat.

Rape, another good forage crop, may be sown at the rate of six to eight pounds an acre, and will provide later pasturage, following the oats and Canadian field peas. In sections where soy beans and cowpeas grow satisfactorily they furnish an excellent mid-summer pasture. If sowed later they make a good forage crop in late summer and early fall. When sown in corn they serve as an excellent supplement to the corn for fattening lambs.

If pastured by alternating the grazing in different parts and not allowing any particular section to be too closely eaten, a field of soy beans may be used for a considerable time. When most of the leaves have been eaten it is time to move to a fresh portion of the field so that the plants on the grazed part will have a chance to leaf again. In some sections it may be desirable to cut this growth and use it for hay, especially when other leguminous hays are not available.

It is good practice to sow rape at the last cultivation of corn. The lambs can then be turned in the corn field in the fall and will feed upon the lower leaves of the corn and rape and make excellent gains.

Lambs not only make a rapid and cheap gain on forages of this kind, but a forage-crop system prevents, to a large extent, injury from stomach worms. It has been demonstrated that by changing lambs every two weeks to ground not previously grazed that season, stomach worms can be effectively



Sheep on Pasture.

controlled. Since this condition exists, it is better to have the pastures of a convenient size, so that the lambs and ewes will consume all the forage in a period of about two weeks and again be turned on a new pasture. This does not allow the use of a second growth. The ground can then be plowed and a second crop seeded to afford later forage crops.

Where lambs are to go to market an effort should be made to get them off early. Lambs make the best and cheapest gains during the first four months of their lives. A grain feed fed in a lamb creep arranged in the field will prove helpful in pushing the lambs along and keeping them in good condition. This feed should consist of corn, oats and bran. Lambs should be fed all but no more than they will clean up each day. Never put clean feed into the trough where old feed remains.

Lambs weighing 60 to 75 pounds make the most desirable market offering. The reason is that lambs of this size dress out a desirable market carcass, which can be more readily handled by the butcher, in meeting the demands of his trade. Heavier lambs do not sell so readily, and when supplies are large there may be a small price discrimination in favor of lambs under 80 pounds.

Growers will find that by following a system of forage crops for rotation of pasturage to prevent stomach worms, and supplying grain feed in a lamb creep to keep the lambs gaining steadily, larger profits can be realized.

Good Shelter for Pigs.

Pigs need a place of shelter to appropriate when the weather is bad, and shade when the sun is too hot for their endurance.

The New Standard
Oversize
Extra Heavy Non-Skid

FIRESTONE

Fabric Tire Guarantee
6,000 MILES

Cord Tire Guarantee
8,000 MILES

We have a stock of over One Hundred Tires on hand. After having tried out eight of the different makes, we have found the New Standard Oversize Firestone gives the "Most Miles Per Dollar."

Lakin Hardware

"WHERE IT PAYS TO TRADE"

Is Your Money Supporting the Government?

At this critical period in our history our manufacturers are offering their mills and our young men are offering their services to the United States government. Would you like to do your share and help, by putting your money where it will support the new Federal Reserve Banking System, which the government has established to stand back of our commerce, industry and agriculture?

You can do this by opening an account with us as part of every dollar so deposited goes directly into the new system, where it will always be ready for you when wanted.

Member Federal Reserve System

FIRST NATIONAL BANK

THE OAKS CAFE

KATE E. WARNER, Prop.

CASSEST OZIEST and LEANEST AFE in

PRINEVILLE OREGON

REGULAR 50c DINNER

6 A. M. to 1 A. M.

ON MAIN STREET

FIRST DOOR NORTH

OF

JOURNAL OFFICE

At Your Service

The officers and resources of this bank are available at all times in assisting you to solve your financial problems.

We do both a Savings and Commercial Business

Capital and Surplus \$50,000.00

CROOK COUNTY BANK

PRINEVILLE, OREGON

A Classified Ad Brings Quick Results

WANTED—LADY!

To learn telephone operating. Paid while learning. Apply at the Pacific Telephone and Telegraph Co.

The Journal does Modern Printing on Short Notice

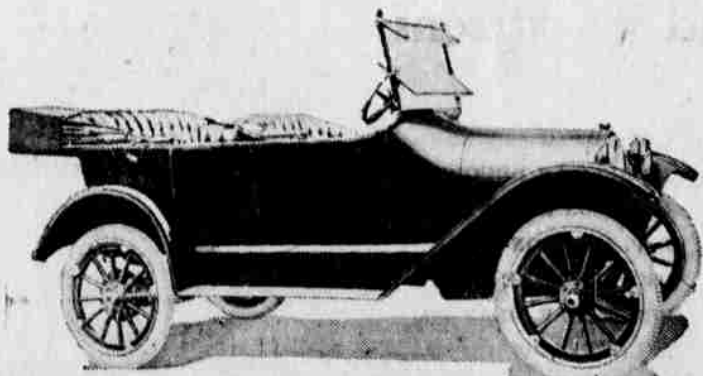


There is a specific reason for the excellent finish of the Chevrolet Cars. For from the moment the newly built body is carefully cleaned and the first coat of enamel is applied, until the body assumes that lustrous smoothness that characterizes the finished car, every operation is automatically safe-guarded against carelessness or hurried workmanship.

Therein lies the secret of the uniformly long wearing qualities of the Chevrolet finish. This is the reason for its even depth and richness.

This is why a Chevrolet car always appears well groomed and attractive long after the car has ceased to be new.

NEWELL MOTOR SALES CO.
PRINEVILLE - - - - OREGON



Chevrolet "Four-Ninety" Touring Car \$735, f. o. b. Flint, Michigan