

ROSS-DOUGLAS MOTOR CO. HOUSEWARMING

MOST MODERN GARAGE IN INTERIOR READY FOR USE

OPENING IS SET FOR SATURDAY

New Place Will Be Given Over To Buick and Chandler Cars, Case Tractors and Republic Trucks

The big new garage which has just been completed for the Ross-Douglas Motor Company will be opened Saturday evening of this week.

The event will introduce the most modern garage in interior Oregon to the motoring public, and will be unique in the extreme.

The entry fee, which is \$1, is to be collected by a Red Cross nurse, and the entire amount of the receipts will be retained by this worthy institution, while all expenses of the opening, including music, souvenirs and refreshments, will be paid by the Ross-Douglas people.

Decorations for the event will be in patriotic colors, the red, white and blue predominating.

The new building will be equipped with all modern conveniences for the traveling public, including separate wash and dressing rooms for ladies and gentlemen, for their bodily comfort, as well as many conveniences for the motor.

On the sidewalk in front of the building is being installed a drinking fountain, also water for the radiator and convenient for filling water sacks.

Free air will be on tap there also, and a gas pump of course. The free air will also be obtained in the service stall inside the building, and at two or more points inside the shop proper.

At this garage Buick and Chandler cars will be sold as well as Case tractors, Republic trucks, and Delco electric lighting plants and of course standard makes of tires and other equipment and accessories appertaining to this line of business.

A modern show room, where the latest models of Buicks and Chandlers will be on display, will occupy the front of the building, and it is the aim of this company to have cars of both makes on hand for immediate delivery.

A vulcanizing room, where the

best of tire service can be had, is being installed in the building, in addition to the shop and storage space.

The entire building, which is complete in every detail, is 140 by 50 besides 80 feet of open shed room in the rear for storage of cars that are waiting for parts, etc., which is usually referred to as "dead storage." The building is of concrete, and has large plate glass show windows which gives it a fine appearance.

A room equipped with electrical equipment for recharging and rebuilding storage batteries is being included in the building.

The new concern is owned by Homer Ross, Chas. Ross and Robert Douglas, the former holding the largest interest.

STOCKMEN INSTALL DELCO LIGHT PLANTS

Delco lighting plants have been recently installed by the Inland Auto Company on three of the largest stock ranches in Central Oregon.

The Baldwin Sheep Company, of Hay Creek has recently put a large plant into operation which is furnishing lights to their residences and other buildings at the headquarters of this large concern.

They made the installation after investigations that proved Delco to be superior to other means of providing light, and much less dangerous from fire risk.

H. L. Priddy, of Trout Creek, has put one of these modern plants into operation on his place, and is greatly pleased with it.

L. L. Jones, of Wheeler County, also purchased one of the plants from the Inland people, and says that it is giving excellent results.

WHAT IS AMBU?

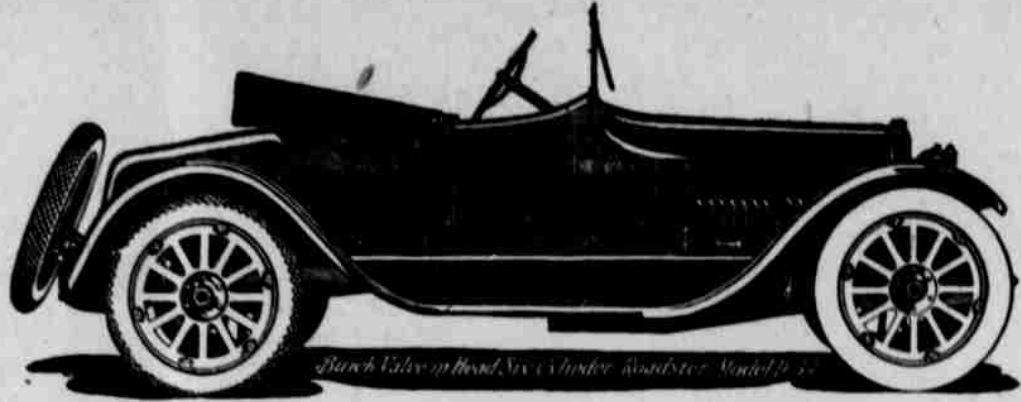
Electric Trouble Shooter for Automobiles of Every Known Make

Even more than human is the little machine or instrument built by the Chicago Bureau of Engineers for detecting disorders in the electrical equipment on any automobile.

With the machine, which has been recently installed by the Inland Auto Company, and will be brought with them to their new Ross-Douglas Motor Company garage, comes a diagram of the electrical equipment on every American built automobile, and its application detects at once what trouble there is, doing thereby what would have required many hours without the instrument.

If you have any electrical trouble, call on the Ross-Douglas Motor Company for immediate assistance.

The Journal does modern printing



Buick Valve-in-Head Six Cylinder Roadster, Model D-25

AMONG its myriad other uses, the motor car acts as a connecting link between the various conveniences that form the machinery of modern business. It helps to unify the activities of the railroad construction work, irrigation projects, ranches and other industries, in developing the productive ability of the individual and the nation.

Nearly a score of years spent in the development of the Valve-in-Head principle have fitted Buick cars for the important part they are filling in the industrial world today. And side by side with the engineering achievements have been developed those niceties of manufacture that result from ripened experience and sincere effort.



Our best advertisement and only sales force are the 191 Buick users throughout our territory.

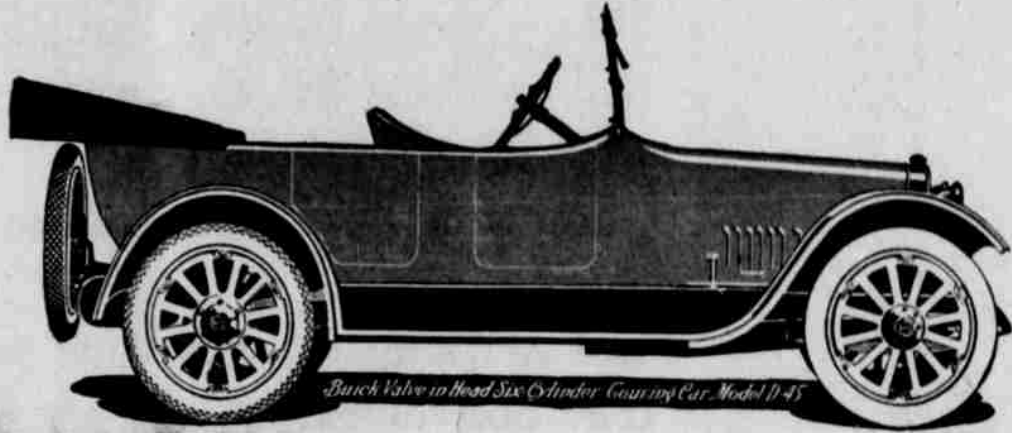


THUS the seasoned motorist favors the Buick. He likes its sleek trimness. He prides himself on its power and performance. And he needs its unflinching serviceability in its daily occupation.

The Buick line is a broad one, composed of both open and closed models for from two to seven passengers. It contains a car for every kind of motoring service.

So widely has the Buick name come to be accepted as marking the highest standards of motor car construction that there is a national demand for a Buick for every phase of motor car use.

Illustrations and descriptions of these various cars are incorporated in the new catalogue which will be sent upon request.



Buick Valve-in-Head Six Cylinder Touring Car, Model D-45

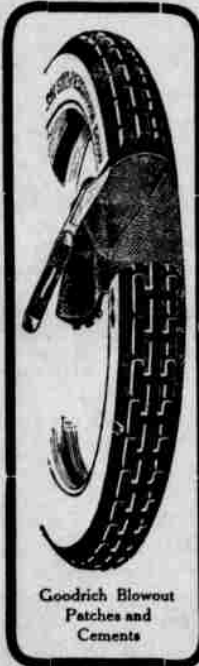
Ross - Douglas Motor Co. Prineville Oregon

WATCH FOR



THIS SIGN

A SAFE TRAVEL INSURANCE IS A GOODRICH EQUIPPED CAR



Goodrich Blowout Patches and Cements

WE CARRY in stock a complete line of Goodrich Fabric and Cord Tires; also gray and brown tubes. We especially recommend the 31 x 3.75 Casings for Ford Cars. Almost a four inch tire at a price below a great many of the standard makes of 30x3 1-2 casings.

Always a supply of **GOODRICH RELIABLE ROAD MAPS**, which ace yours for the asking.



Goodrich Demountable Rims

ROSS - DOUGLAS MOTOR CO. PRINEVILLE, OREGON

DELCO-LIGHT

ELECTRICITY FOR ANYONE-ANYWHERE



Here's a letter from a local user of DELCO-LIGHT

Burnt River Mercantile Co.
General Merchandise
Unity, Oregon
February 26, 1917.

Domestic Light & Power Co.,
Portland, Oregon.
Gentlemen:

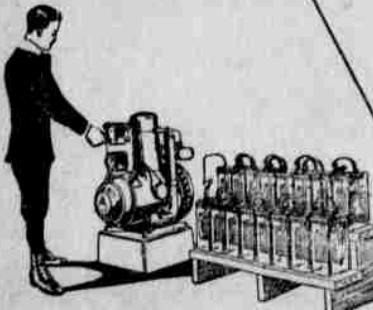
The Delco-Lighting System has been used in our store and house since November 12, 1916, and has come up to all of the promises made for it. Since that time we have never been without lights and repair bills have been negligible and we therefore have as to be troubled to figure the actual cost of operation per kilowatt.

With the advent of the Delco-Lighting System and other conveniences heretofore denied people in outlying districts, it is now possible for people living in the country to enjoy all of the comforts of the city at a nominal expense.

Very truly yours,
Burnt River Mercantile Co.,
By B. W. Miggins, Mgr.

DELCO-LIGHT is a complete electric plant designed to furnish light and power to farms, country homes, summer cottages, yachts, houseboats, rural stores and churches

It better living conditions and pays for itself



DELCO-LIGHT Simple - Durable
DELCO-LIGHT BATTERY Thick Plates - Long Life

ROSS-DOUGLAS MOTOR CO.