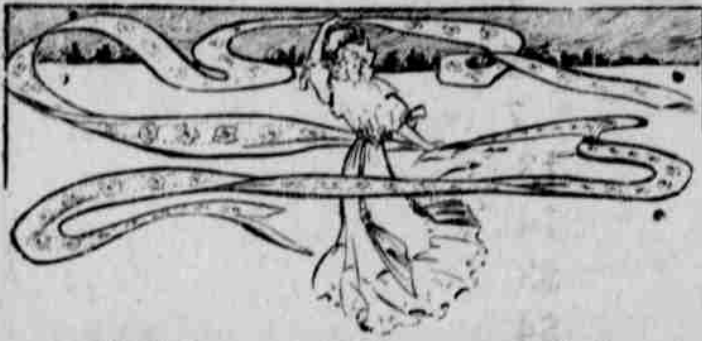


Big Mid-Summer Clearance Sale Is On



Mid-Summer Clearance Sale

On many useful articles in wearing apparel—specially reduced in price.
 All 15c to 20c Colored Summer Dress Goods in Lawns, Foulards, etc., only **10c**
 All 35c Summer Ducks in fancy stripes and plain colors at **24c**
 All 50c Summer Dress Goods at **39c**
 All 65c Fancy Summer Fabrics **48c**

All Middy Suits and Middies Specially reduced

65c garment, now **53c**
 \$1.75 garment, now **\$1.30**
 \$2.75 garment, now **\$2.20**

MIDDIES FOR GIRLS

65c quality for **53c**
 \$1.25 quality for **\$1.05**
 \$1.50 quality for **\$1.25**
 \$1.75 Skirts in Stripes and Colored Cotton **\$1.30**
 Dresses, special at
 \$2.50 Skirts in Better Grade Colored Goods **\$2.10**
 White Dress Skirts—Twills, Indian Head or Duck
 \$2.00 grades for **\$1.50**
 \$2.75 grades for **\$2.15**
 \$3.50 grades for **\$2.90**



The Paint That Wears



Acme Quality means more when you try it. We guarantee this line of Paints, Stains and Varnishes to be especially adapted to this climate, to be perfect in mixture, and very easy to apply. Call for ACME Quality

- House Paints
- Floor Paints
- Porch Paints
- Automobile Paints
- Wagon Paints
- Varnolac Stains for furniture

Acme Oil Stains for house furnishings. All kinds of enamels—big line of colors.

TRY ACME QUALITY

The Paint That Wears



The Best Grades In HAYING TOOLS

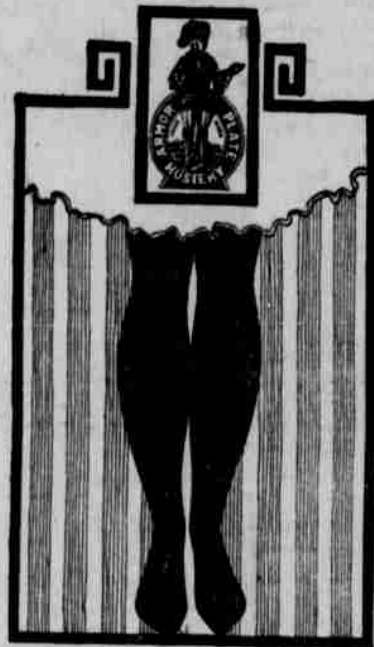
and the many necessities.

- Crucible Plow Steel Wire Cable
- Pure Manilla Hoist Rope
- Pitchforks—Scythes
- Machine Oils—Wrenches
- Oil Cans—Waterbags
- Steel Canteens in 1/2, 1, and 2 gals.

PULLEYS

The Louden Hay Pulleys are the best made—for Wire or Manilla Rope. Ask to see the Louden. Safe and Durable.
 See our MYERS HAY CARRIERS in two styles.

HOSIERY

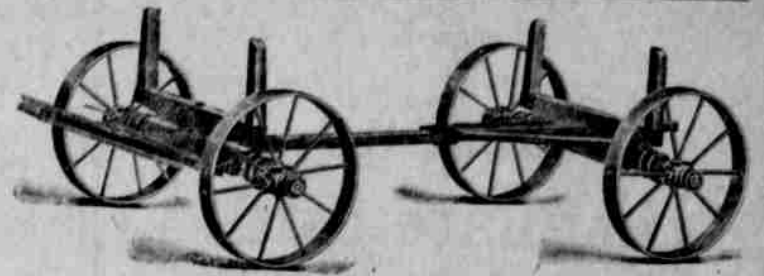


Broken Lines Women's Hosiery in black and colors, regular 35c grade, special at **27 1/2c**

U. S. Soldier Girl Hose in Black, sizes 5 1/2 to 9 1/2 special at **20c**
 This is a light weight fine ribbed hose of excellent quality.

CHILD'S BAREFOOT SANDALS

Come in many grades. We quote only on good leathers. You can order with this guarantee.
 Sizes 5 to 8, regular \$1.35, for **\$1.20**
 Sizes 8 1/2 to 13, reg. \$1.75 for **\$1.45**
Women's Maple Calf Sandals
 Sizes 2 1/2 to 6, reg. \$2.25 for **\$2.00**



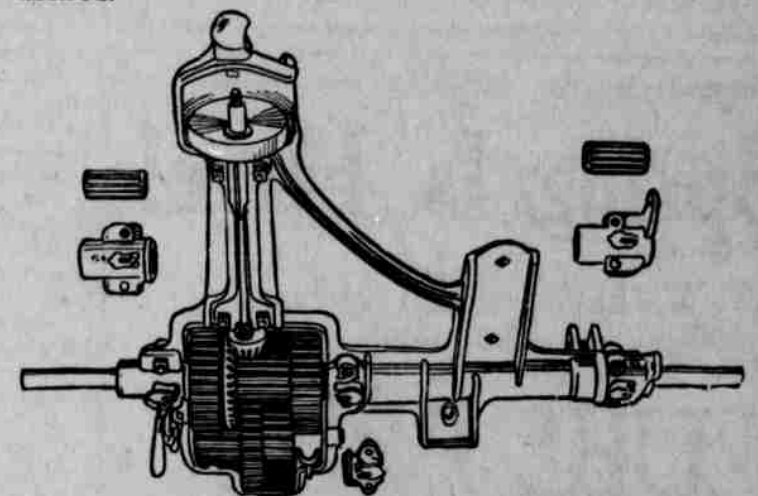
OUR HANDY STEEL WHEEL TRUCK

is the best of its kind—3 1/4 inch full trussed axle; wheels 4 inch channel, stagger spoke; 30 inch front and 34 inch hind; full circle steel hounds, make it the very best on the market. All wood parts fully seasoned.
 Price **\$55.00**

Wagons

as well as other products containing steel are advancing continually, and whether war continues, or an early peace is declared, the price will not decline, so we are advised.

We have on hand the regular Mitchell wagons in 2 3/4, 3 and 3 1/4 inch sizes, for immediate delivery. Special sizes or medium wide tire wheels ordered if desired.



THE THOMAS TWO-SPEED MOWER

The Best for all kinds of cutting is made by the Thomas Mfg. Co. Praised by every user as the strongest, the easiest running, and the most economical in repairs.

THOMAS HEAVY ALFALFA RAKE rakes the hay—extra wide—extra strong.
USE THE THOMAS HAY TOOLS and you will "get there".

CLFARANCE SALE IN SUMMER FOOTWEAR

will keep your feet COOL.

CHILD'S LOW TAN SHOES

Sizes 5 to 8, regular \$1.85, for **\$1.35**

BOYS AND GIRLS LOW TAN SHOES

Sizes 8 1/2 to 13, regular \$2.25, for **\$1.75**

MISSES LOW TAN SHOES

Sizes 13 1/2 to 2 1/2, regular \$2.50, for **\$2.00**

MEN'S VENTILATED LOW SHOES

in best Calf Leather—perfectly soft and comfortable, the great remedy for hot, burning, smarting, perspiring feet.
 \$3.75 shoes, special **\$2.75**

COLLINS W. ELKINS

DETAIL OF DRAFT PLAN IS GIVEN

Every Registered Man Will Get Number Showing Liability For Army Service.

Washington.—Drawing of lots for the selective draft not only will determine what men are to be called to the colors in the first war army but will show in what order the others registered will be liable for service when later armies are organized.

Definite place in the waiting lists will be given every one of the millions who registered. Those standing at the head of the list in each county or city district will be called first before the examining boards and then the obligation will pass on down the line as long as men are needed.

To prevent embarrassment among those who are exempt, the war department has decided to give with each exemption certificate a bronze badge bearing the inscription, "Exempted—U. S." It is desired to prevent those exempted from any suspicion of being slackers.

In assigning the quota of men that each state must yield for the new

army, the war department used the federal census population estimates.

New York leads all others with 69,241. Oregon is asked to yield at least 717, Washington, 7296, Idaho, 2287, California, 23,060, and Alaska, 696.

Because Oregon, in proportion to population, furnished more volunteers for the National Guard and regular army than any other state in the Union, its quota, under the selective draft, is the smallest assigned any of the 48 states.

The formal opening of the Tillamook highway and dedicating the new roadway just completed at the pass in the mountains, known as the Sour-Grass cut-off, was held Saturday.

Wong Wen Tueng, Hop Sing tong gunman and slayer of Joseph Gue, Chinese fish merchant, was sentenced to life imprisonment in the penitentiary by Circuit Judge Gatens at Portland.

Canneries operated by the Eugene Fruitgrowers' association in Eugene, Junction City and Creswell began the season's run this week, with prospects for continuous operation until late fall.

Announcement has been made by the division of naval militia affairs, Washington D. C., that the Oregon naval militia will be mobilized at Seattle for intensive training about August 1.

OREGON NEWS NOTES OF GENERAL INTEREST

Principal Events of the Week Briefly Sketched for Information of Our Readers.

Ashier held its third annual sweet pea show last week.
 Linn county now has 18 branches of the Red Cross society.

The Albany fruit juice factory began pressing loganberries Monday.

The Oregon state pioneers' annual reunion is to be held in Portland Thursday.

Bank deposits in Yamhill county show an increase of nearly \$1,000,000 for the year.

Albany employes in the fire and street departments may be increased \$10 a month.

DEVELOPS QUICKSILVER MINE

W. H. Butler, about a year ago discovered a cinnabar or quicksilver mine on the head waters of the West Branch, 15 miles west of Mitchell in Wheeler county. The find is reported to be very rich, running

from one to ten per cent. It has been developed until it will stand investigation by any one who might be interested in such mining property. The ledge is said to be eight feet wide and no end to it. There is a tunnel in on the ledge for 160 feet and it pays well the entire length. Mr. Butler lives at Mitchell, Oregon.

GRASSHOPPERS AT LOGAN

Logan valley will produce a most excellent crop of grasshoppers this summer. They have already made their appearance in numbers upward of countless millions and when one walks across the ground and sets them in motion it looks as though the ground was moving like the surface of the sea. They will move north into the John Day valley if they perform like they did several years ago, and if they do there is crop enough of them to eat everything that is green.—Blue Mountain Eagle.

RECEIPTS ARE HEAVY

(Continued from page 4)

beef steers 7.50 @ 9.00; best beef cows, 6.50 @ 7.50; ordinary to good cows, 5.00 @ 6.00; best heifers, 6.50 @ 7.25; bulls, 5.00 @ 7.00; calves, 9.00 @ 9.50; stocker

and feeder steers, 6.00 @ 7.00; stocker and feeder cows, 5.00 @ 6.00.

Hogs

The hold-over on hogs got a shock when the market opened this week with a heavy supply and a 25c to 40c decrease in prices offered from the close of last week's market. Compared with the opening of last week, prices have suffered a little decline, being quoted as follows for this week's opening and topping at \$15.65: "Receipts 1722; tone of market steady at slow, 25c lower; light hogs 15.25 @ 15.65; heavy hogs 14.25 @ 14.65; pigs 13.50 @ 14.00."

Sheep

sale of the previous week. The general indications are for a 25c cut in price of good beef steers. Common to medium steers are in less demand and are suffering a depreciation of 50c from last week's open market.

Cows and heifers are going at 50c lower than the opening of last week, and there is a good supply of commons with only a few loads of really good cows.

Bulls continue steady at a decline of 25 to 35c and calves continue steady. Quotations for today are as follows: "Receipts, 1912; tone of market slow, 25c @ 50c lower; best beef steers 9.50 @ 10.00; good The decline in the sheep market

was very slight, amounting to probably 25c on lambs and as much on wethers, with no further cuts on ewes. The top for lambs was 12, but the grade offered was not standard for quotations.

The market for the opening quoted as follows: "Receipts 139; tone of market steady to 25c lower; lambs 12.25 @ 12.75; yearling wethers 9.00 @ 9.50; ewes 3.50 @ 7.00."

USED CARS BARGAINS

Every car as represented. We will pay your railroad fare if you purchase one of these used cars.

- 1910 5 passenger Cadillac.....\$325
- 1912 5 passenger Cadillac..... 500
- 1914 5 passenger Cadillac..... 800
- 1914 5 passenger Studebaker..... 500
- 1914 5 passenger Reo..... 500
- 1912 5 passenger Haynes..... 425
- 4-38 1916 5 passenger Briscoe 750
- 1917 5 passenger Briscoe 4-24 725
- 1917 8 Cylinder Briscoe nearly new..... 950
- Mitchell chassis..... 200
- Oldsmobile chassis..... 175

Rebuilt Federal Trucks
 Every truck rebuilt and guaranteed \$1100.

PACIFIC KISSEL CAR BRANCH,
 Broadway & Davis St.,
 Portland, Oregon.
 Distributors for Kissel Cars, Kissel Trucks, Briscoes, Dobs.