

ABOUT SUMMER RANGES

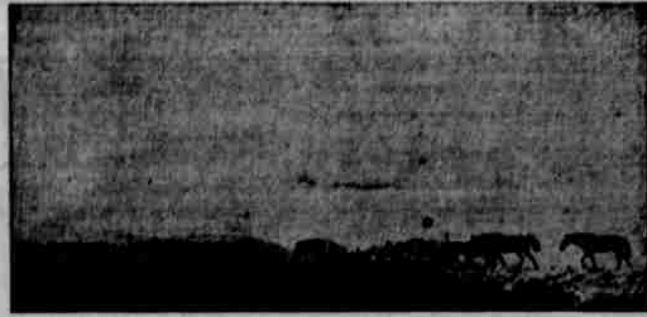
By Forest Supervisor, Homer Ross

A great deal has been said about the vast livestock wintering resources of Crook County, but very little about our summer ranges. A great many people do not realize the important part which they play as a resource to our country and as a governing factor in the amount of livestock which can be delivered on the market each year.

It was only a few years ago that the number of stock a rancher could handle was governed by the number he could winter. However the situation is now changed and the number of cattle and sheep that can be handled on a great many of our ranches today is limited to the number for which summer range can be provided.

This is not due to any reduction in the amount of forage that is being produced on our summer ranges (because they are supporting more stock today than they did 5 years ago and are turning them out in the fall in better condition) but rather to the fact that we are producing many times the tonnage of hay now as compared to 5 or 10 years ago, and as fast as we increased our hay production, we built up our herds correspondingly. This has taxed our summer ranges to the utmost and has made necessary the practice of intensive and scientific range management in order to meet the situation as far as possible.

The Ochoco National Forest is located almost in the center of the State and comprises approximately 800,000 acres of summer grazing land about one-half of which is located in Crook County. This 400,000 acres comprises about nine-



tenths of the summer pasture land of the County and will support during the coming summer about 7,500 cattle and 45,000 sheep. The entire forest will feed this year 15,000 cattle and 85,000 sheep having a total value of over \$2,300,000. With these figures before us we can conceive some idea of the value of this resource to our community, and especially at this time when we are making every effort to produce the maximum amount of meat for our country.

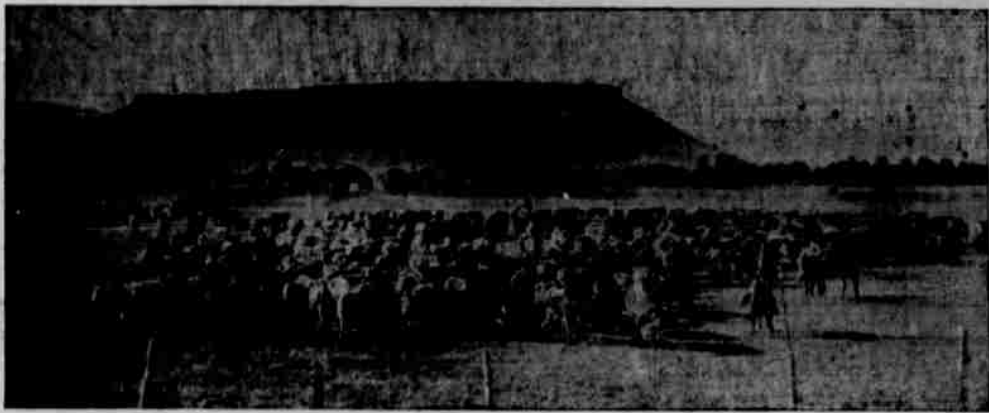
The owners of the above mentioned livestock are among the most progressive in this line of business in the West and have entered into the spirit of range development with the Forest Service in a wholehearted way. Where the sheep owner used to handle his sheep in larger bunches and their excessive trailing and tramping was destructive to the forage, they now run them in smaller bunches. Where in the old days they frequently spent a month in one camp, they now move their flocks frequently in order to graze the range more evenly. The system of individual allotments has done away with the rush for the higher ranges where during the early days

the range wars occurred.

The cattle owners have steadily improved the grade of their stock, until many of the herds today contain prize winners in several different breeds and the range fattened beef is of the finest quality. The cattle owners have formed community organizations through which they construct drift and division fences, put into effect systematic salting and breeding plans, and carry on cooperative range development with the Forest Service.

The desire of the cattle and sheep men to improve the quality, and increase the carrying capacity of our summer ranges, together with their liberal expenditure of money, has done much toward increasing the value of this resource to our community.

Ephraim Barnes, supervisor of the Minam forest, has received a telegram from headquarters to the effect that all stockmen holding permits to graze stock in the reserve will not be compelled to relinquish their permits upon enlisting in the army. Each will be required only to notify the office of his enlistment and other herds will be substituted until his return.



Eagle Cigar Factory

Smoke
Prineville
Made
Cigars

Prineville, Oregon
GEORGE WALKER, Propr.
Manufacturer of the

Eagle Perfectos
Cigars of Highest Quality

For comfort and efficiency on the farm use

Electric Automatic Pumps

for your water supply. They are cheap to operate and require attention only once or twice a month

Electric Power for Irrigating Pumps

Electric Washing Machine

Only 2c an hour to operate

Electric Sewing Machine

Cost of machine with motor complete \$37.50 and 1c an hour to operate

In addition to the above there are dish washing machines, ironing machines ranges, choppers, separators, churns and many electrically operated appliances that take the place of hired help and are a real economy to use

Des Chutes Power Co.

Operating in Prineville, Oregon, Redmond, Oregon, Madras, Oregon, Metolius, Oregon, Culver, Oregon and adjacent territory