

THE RESURRECTION OF MAN

By JAMES A. EDGERTON
(Copyright by American Press Association, 1911.)

If faith in man were music
And love of man were song,
Then might I sing a measure
To move the world along—
Its theme, the Christ that is to be,
The Christ in all Humanity.

Tried by his sense illusions,
Himself man has denied,
Has scoffed the God within him
And has been crucified,
Has borne his cross up Calvary,
The Christ in all Humanity.



Now from his tomb self builded
At last he shall be freed.
That will be resurrection
And Easter morn, indeed!
And he shall know himself and see
The Christ in all Humanity.

Hail him, the arisen,
With lilies at his feet,
Called forth by his own angels
In resurrection sweet.
Roll back the stone of self and free
The Christ in all Humanity.

A SENTIMENT FOR EASTERTIDE

Easter exemplifies the triumph of life. Life is the supreme fact. Let us believe only in life, refusing to be dominated by the unsubstantial wraith called death, refusing to be diverted thereby from "the upward looking and the light." Then will Easter be to us the most significant, the most inspiring, the most uplifting of all the days that dawn.

Huntington & Wilson

Attorneys

Of The Dalles, have opened offices in
Portland, Oregon, Rooms 805-807
Lewis Building.

Business sent to them from Crook County
through their office in The Dalles or direct
to their Portland address will receive prompt
attention. Portland Phone, Main 786.

Seed Potatoes.

Early Rose and Burbank Seed Potatoes
for sale. Horgan & Reinke. 3-30

Clover Leaf Ranch

Fort Rock, Oregon.

Barred Plymouth Rock, Silver Spang &
Hamburg, Buff Orpington, Golden
Wyndotte, White Wyndotte, and White
Leghorn eggs \$2.50 for 15. Orders will
have prompt attention. All AI stock,
finest that can be had.
1-511 C. E. Shaffer, Prop.

DR. R. D. KETCHUM

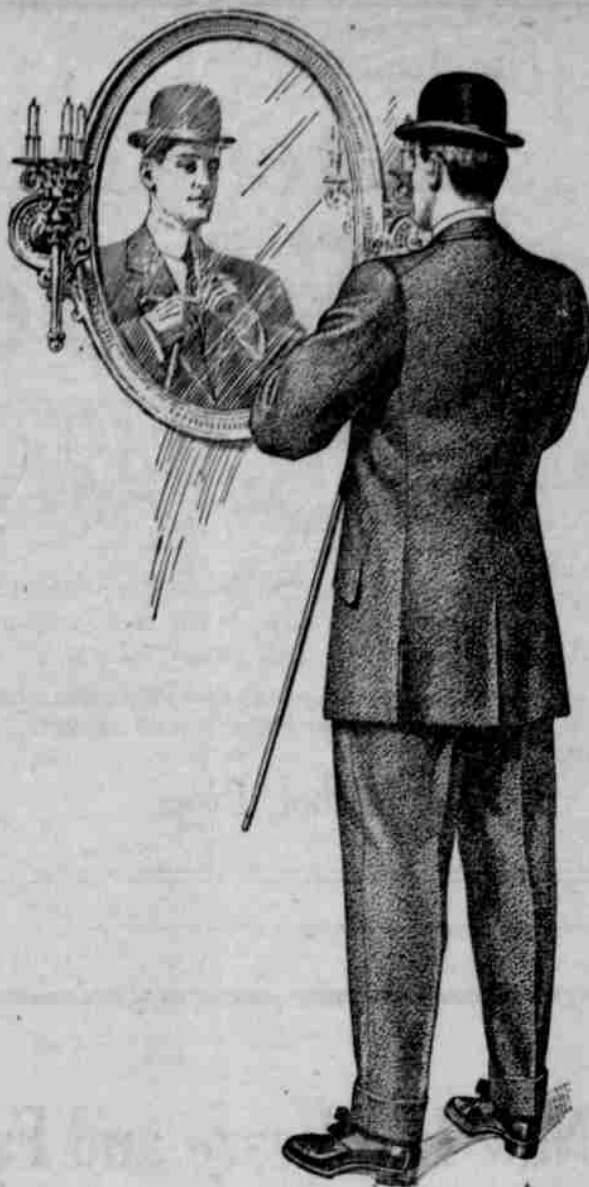
Drugless Healer

Spinal Adjustments and Dietetics a
Specialty

CONSULTATION FREE

Hours 7:30 to 12 a. m. 1 to 5 p. m.
Calls answered promptly.

Rooms 16-17 Adamson B'dg.



Spring Suits Have Arrived

We beg to inform the public that our entire Spring line of Men's Suits are in and we have the nicest line ever shown in the city. We have your size now; do not wait until the line is broken and then be unable to select what you want. We will lay your size away for you. We have all the popular shades in gray, brown, tan, etc. etc.

Every suit guaranteed to fit, wear, and retain its shape.

FOSTER & HYDE

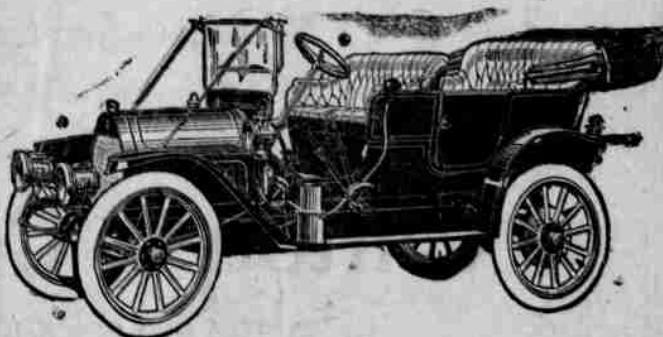
Bids Wanted!!

To furnish 60,000 feet of lumber for sidewalks in Noble's Addition, to be delivered on the ground at the earliest possible date. Bids are also desired for the construction of sidewalks complete, everything to be furnished by the contractor and for the construction of such walks where all materials are furnished by us. Bids are also called for to level and grade the streets in Noble's Addition. For full particulars, call on or address

A. R. Bowman,

Selling Agent for Noble's Addition to Prineville, Or.

Crook County Agent For



1911 REO and "APPERSON"

1911 Reo 4-30 Five Passenger fore-door \$1,575.
1911 Reo 4-30 Five Passenger Touring \$1,500.
1911 Reo 4-30 Four Passenger Torpedo \$1,500.
1911 Reo 4-30 Two Passenger Roadster \$1,150.

The fore door and five passenger and four passenger are complete with glass front and top, the two passenger is without. 1911 Apperson 4-30, 40 h. p. 5 Passenger complete \$2250, Portland. 1911 Apperson 4-40, 50 h. p. 7 Passenger complete \$3250, Portland. Cars on display and will demonstrate at any time.

J. C. ROBINSON, Madras, Oregon

Watch This Space

For Announcement of New Lot
Subdivision.

Oregon & Western

Colonization Co.

John R. Stinson

Chas. C. Lundy

Crook County Agents.

Prineville, - - - - Oregon

Oregon Trunk Railway

The Line Open for Passenger
and Freight Business at Mo-
tolius, Madras and points
north.

Daily passenger train leaves Motolius 8:30 a. m., Madras 8:47 a. m., stopping at intermediate points, connecting at Fallbridge with the Inland Empire Express on "The North Bank Road," arriving at Portland 8:15 p. m. Leaving Portland 9 a. m., arrive Madras 7:45 p. m., Metolius 8 p. m. Trains carry parlor cars, first class coaches and smokers.

Low Fares March 10th to April 10th

During this period Low Colonist fares will be in effect from the middle west to all points on the Oregon Trunk Ry. From Chicago \$33, St. Louis \$32, St. Paul \$25, Kansas City \$25, Omaha \$25, other points in proportion, via Burlington Route, Great Northern or Northern Pacific Rys., The North Bank Road and Oregon Trunk Ry. This is a good chance for your friends to come to Oregon on about half fare.

Round Trip Fares—Homeseeker's reduced round trip fares are in effect to all Oregon Trunk Railway points the first and third Tuesday of each month from all points in the middle west.

Freight received from and forwarded to Portland, Spokane and other points.

R. BUDD, Chief Engineer, Portland, Oregon.

J. H. Corbett, Agent, Madras, Or.

T. A. Graham, Agent, Metolius, Or.

General Blacksmithing

HORSESHOEING, WOOD WORK, ETC.,
NEATLY AND PROMPTLY DONE
WHEN IT IS DONE BY : : :

Robert Moore

Satisfaction Will Be Guaranteed

PRINEVILLE, - OREGON.

Free Auto Excursion to Prineville Heights

Prineville's latest residence district, just platted and now on the market.

Buy a lot in Prineville's sanitary residence district on easy terms. No sloughs, marshes or mosquitoes. Less frost than on the river bottom. Fresh air, pure water and an excellent view of the city. City water will be conveyed to the property at our expense. Lots 40x114; prices range from \$80 to \$200. Half cash, balance payable at \$10 per month; 6 per cent on deferred payments. Examine the maps at our office.

HENDERSON INVESTMENT CO.

Prineville Hotel Building, Ground Floor
Prineville, Oregon.