

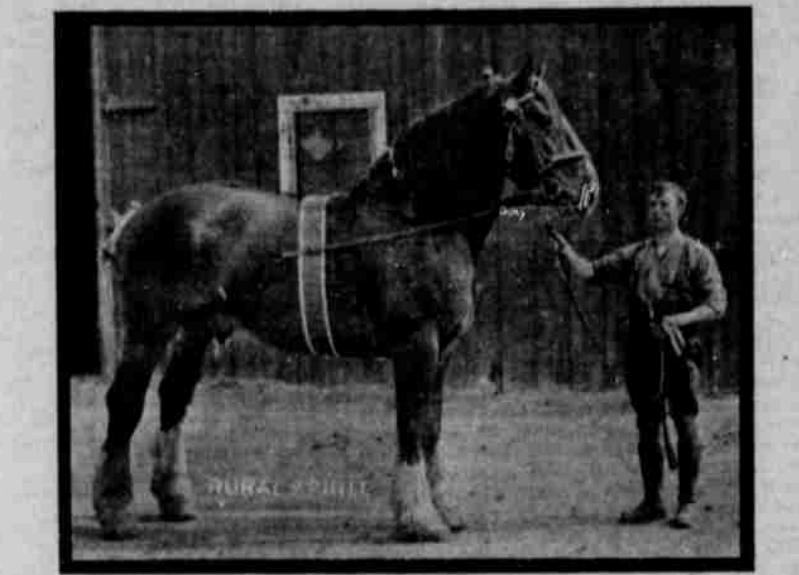
ROBT. SMITH'S

Prices that You Will Find Right After Considering Quality

GENERAL MERCHANDISE
SISTERS OREGON

Table with various merchandise items and prices such as Fruit per can, Royal Club Blackberries, Royal Ann Cherries, etc.

Blaisdon Glory 8622
REGISTERED SHIRE STALLION



Will make the Season of 1910 at Hay Creek, Oregon. Arrangements for Breeding can be made by applying to the

Baldwin Sheep & Land Co.
HAY CREEK, OREGON

Quality advertisement for watch repairing by W. Frank Petett, Jeweler & Optician, Prineville, Oregon.

Whiskey Bad for You? advertisement for 'I. W. Harper' whiskey, sold by Silvertooth & Browder, Shaniko, Oregon.

The First National Bank advertisement for Prineville, Oregon, listing resources and liabilities.

LUMBER advertisement for Shipp & Perry, Prineville, Oregon, listing various types of lumber.

Notice to Creditors, Pay Up, For Sale, and After Patrons of the Woodsaw advertisements.

Prineville Steam Laundry and Well Drilling advertisements.

Notice of Sale of State Lands advertisement.

Notice of Publication advertisement regarding land matters.

Notice of Sale of State Lands advertisement.

HARNES and SADDLERY SHOP advertisement for H. D. Still.

Excursion Rates To The East advertisement for Oregon Railroad & Navigation Co.

Wood Wanted advertisement for a contractor.

County Court

Continued from page 6.

Notice to clerk to notify supervisor to open said road and request petitioners to donate one day's labor each opening same.

Notice for county road by Frank Doney et al continued because of defective bond.

Notice to clerk to notify supervisor to open said road and request petitioners to donate one day's labor each opening same.

Notice to clerk to notify supervisor to open said road and request petitioners to donate one day's labor each opening same.

Notice to clerk to notify supervisor to open said road and request petitioners to donate one day's labor each opening same.

Notice to clerk to notify supervisor to open said road and request petitioners to donate one day's labor each opening same.

Notice to clerk to notify supervisor to open said road and request petitioners to donate one day's labor each opening same.

Notice to clerk to notify supervisor to open said road and request petitioners to donate one day's labor each opening same.

Notice to clerk to notify supervisor to open said road and request petitioners to donate one day's labor each opening same.

Notice to clerk to notify supervisor to open said road and request petitioners to donate one day's labor each opening same.

Notice to clerk to notify supervisor to open said road and request petitioners to donate one day's labor each opening same.

Notice to clerk to notify supervisor to open said road and request petitioners to donate one day's labor each opening same.

Notice to clerk to notify supervisor to open said road and request petitioners to donate one day's labor each opening same.

Notice to clerk to notify supervisor to open said road and request petitioners to donate one day's labor each opening same.

Notice to clerk to notify supervisor to open said road and request petitioners to donate one day's labor each opening same.

County Court

Notice to clerk to notify supervisor to open said road and request petitioners to donate one day's labor each opening same.

Notice to clerk to notify supervisor to open said road and request petitioners to donate one day's labor each opening same.

Notice to clerk to notify supervisor to open said road and request petitioners to donate one day's labor each opening same.

Notice to clerk to notify supervisor to open said road and request petitioners to donate one day's labor each opening same.

Notice to clerk to notify supervisor to open said road and request petitioners to donate one day's labor each opening same.

Notice to clerk to notify supervisor to open said road and request petitioners to donate one day's labor each opening same.

Notice to clerk to notify supervisor to open said road and request petitioners to donate one day's labor each opening same.

Notice to clerk to notify supervisor to open said road and request petitioners to donate one day's labor each opening same.

Notice to clerk to notify supervisor to open said road and request petitioners to donate one day's labor each opening same.

Notice to clerk to notify supervisor to open said road and request petitioners to donate one day's labor each opening same.

Notice to clerk to notify supervisor to open said road and request petitioners to donate one day's labor each opening same.

Notice to clerk to notify supervisor to open said road and request petitioners to donate one day's labor each opening same.

Notice to clerk to notify supervisor to open said road and request petitioners to donate one day's labor each opening same.

Notice to clerk to notify supervisor to open said road and request petitioners to donate one day's labor each opening same.

Notice to clerk to notify supervisor to open said road and request petitioners to donate one day's labor each opening same.

Notice to clerk to notify supervisor to open said road and request petitioners to donate one day's labor each opening same.

MAY 1910 SLOGAN advertisement for CENTRAL OREGON, including contact information for the Board and Board of Trustees.