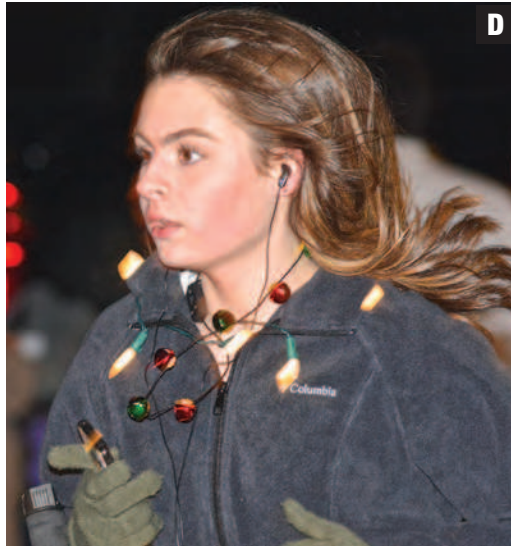


# KeizerCommunity

KEIZERTIMES.COM

## Dashing all the way



Runners lit up the night during the annual Keizer Chamber of Commerce Jingle Dash Saturday, Dec. 14.

A: Patty Mason. B: Colin Mendez. C: Karlee Welter. D: Ashlyn Chess. E: Yahir Omos Lopez. F: Amy Tanikawa.  
KEIZERTIMES/Matt Rawlings



## Christmas at Willamette Lutheran

Residents at Willamette Lutheran Retirement Community celebrated the holidays with a concert performance by Jass Two Plus One on Friday, Dec. 19, followed by dinner and raffles.



TOP: Jim Buckman (left), Steve Boden (center) and John Walling (right) of Jass Two Plus One. RIGHT: Linda Bishop (left) and Pansy Pfah, enjoy the holiday concert.  
KEIZERTIMES/Lyndon A. Zaitz

**LeafFilter**  
GUTTER PROTECTION

**NO MORE GUTTER CLEANING, OR YOUR MONEY BACK - GUARANTEED!**

**0% FINANCING\* AND 15% OFF SENIOR & MILITARY DISCOUNTS**

**FREE ESTIMATES! 1-855-536-8838**

Promo Number: 285

Mon-Thurs: 8am-11pm, Fri-Sat: 8am-5pm, Sun: 2pm-5pm EST

Imagine The Difference You Can Make

**DONATE YOUR CAR**

**1-844-533-9173**

**FREE TOWING TAX DEDUCTIBLE**

Help Prevent Blindness  
Get A Vision Screening Annually

**Heritage for the Blind**

Ask About A FREE 3 Day Vacation Voucher To Over 20 Destinations!!!

**SUBARU share the love® EVENT**

From November 14, 2019 – January 2, 2020 Subaru will donate \$250 to 1 of 5 charities for every New Subaru Sold or Leased!

**capitol SUBARU**

**Year End Super Sale**

**Celebrate The New Year In A New Subaru!**

**\$0 Down & 0 Payments For 90 Days!\***

**NEW 2020 SUBARU OUTBACK LIMITED**

**\$349<sup>00</sup> Per Month** 36 Months \$1,999 Due at signing

**NEW 2020 SUBARU FORESTER TOURING**

**\$349<sup>00</sup> Per Month** 36 Months \$2,499 Due at signing

3235 Cherry Ave. NE  
Salem, Oregon

**888-277-1913**

24/7/365
capitolsubaru.com

\*Get a great vehicle and support a great cause. With every new Subaru purchased or leased, Subaru will donate \$250 to your choice of charities\*. Capitol Subaru will also donate an additional <\$50> to <Hometown Charity> here in our community for each sold or leased vehicle. November 14 through January 2.  
\*\*90 Days to first payment on approved credit only through Selco. Tier 1 690 or above credit rating. Interest accrues at time of inception. Prices do not include lic. title or \$115 dealer doc fees. Cannot be combined with other offers. Exp. 12/31/19  
\*\*\*Outback payments based on 36 payments. Cap cost \$34,197 after \$3,191 Capitol discount + \$595 Acquisition fee. \$1,999 down cash or trade + rebate. No security deposit. Total due at inception \$1,999 + Rebate. Total lease charge \$14,214 + Rebate. Residual value \$22,085.92. 10k miles per year. MSRP \$37,388. Early termination fee \$450. License, title & documentation, fee \$491. All financing on approved credit only with tier 1 700 FICO+ credit rating. ALL MDL#LDF-34 IN STOCK.  
\*\*\*\* Forester payments based on 36 payments. Cap cost \$33,671 after \$3,296 Capitol discount + \$595 Acquisition fee. \$2,499 down cash or trade + rebate. No security deposit. Total due at inception \$2,499 + Rebate. Total lease charge \$14,714 + Rebate. Residual value \$21,810.53. 10k miles per year. MSRP \$36,976. Early termination fee \$595. License, title & documentation, fee \$491. All financing on approved credit only with tier 1 700 FICO+ credit rating. MDL#KFJ-41. 3 at Vin#S418620, S413991, S421112.  
See dealership for details. Restrictions apply. Art for illustration only, subject to prior sale. Prices do not include license fees, title fees and \$115 Doc fees. Click for details. All financing on approved credit with Tier 1 700 or above credit rating. All sale prices on in stock units only. Exp. 12/31/19