

Warren blows past pack in Keizer campaign giving

By **ERIC A. HOWALD**
Of the Keizertimes

Democratic presidential Sen. Elizabeth Warren is finding a receptive audience among a small number of supporters in Keizer.

Warren sailed past every other candidate and Presi-

dent Donald Trump when it came to presidential campaign giving in the third quarter of 2019. Warren raked in \$11,845, but Trump still had more donors than other candidates in the 97303 zip code.

ProPublica recently shared

third quarter reports from every state on campaign giving. *Keizertimes* culled the contributions from Keizer residents for this story.

Keizerites ramped up giving significantly as the candidate field for the nation's highest office winnowed. Total contributions to all candidates for the third quarter topped more than \$26,000.

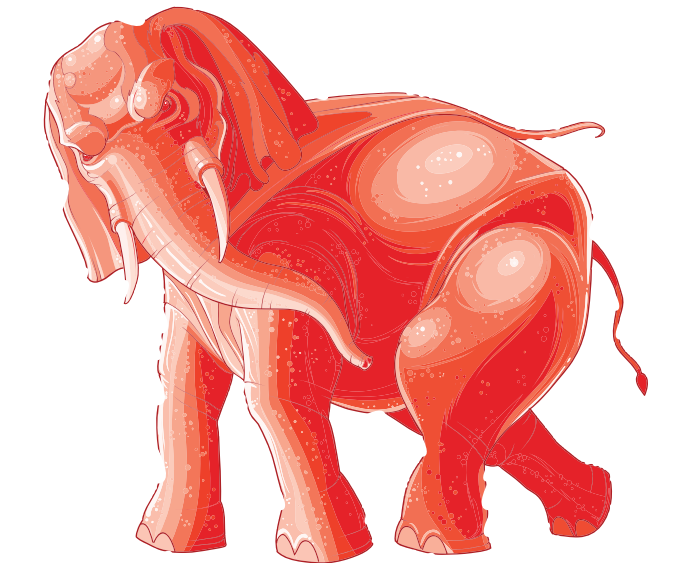
This is how giving broke down for each candidate.

SEN. ELIZABETH WARREN

Warren's whopping \$11,845 total was more than double her closest opponent, Sen. Bernie Sanders. Most of her support, \$8,670, came from two donors. She had support from six donors overall and an average donation of \$423. During the first half of the year, Warren was third among Democrats.

SEN. BERNIE SANDERS

Sanders had the same



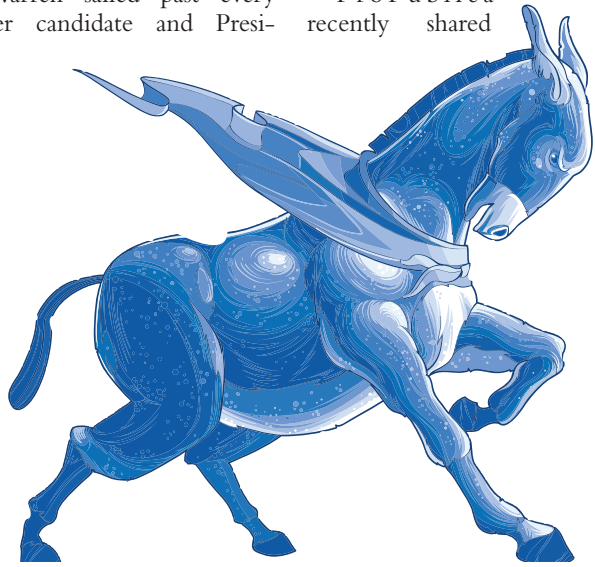
number of donors as Warren, six, but he fell behind Warren after leading the Democratic pack in the first half of the year. Sanders' total for the third quarter was \$4,999.32 with an average contribution of

\$294.

MAYOR PETE BUTTIGEIG

The mayor of South Bend, Ind., fell to third place in Keizer campaign giving after running second to Sanders in the

Please see GIVING, Page A6



4 major tournaments headed to KLL park

By **ERIC A. HOWALD**
Of the Keizertimes

Keizer Little League Park is going to be quite a bit busier for a few weeks next year. Keizer Little League, which manages the park under a contract with the city, recently signed a contract to bring four two-day tournaments to the park. The organizations hosting the tournaments are Cherry City Baseball Club in association with West Coast Premier (WCP) Tournaments.

"What is most important in youth sports right now is quality facilities. A decade ago, that wouldn't even have been a consideration, but KLL Park is an easy, easy place to access and could become a hub for years to come," said Drew Reiners, founder and CEO of WCP. "Our hope is that these tournaments can put some funding into the field that

will make it even better."

Cherry City Baseball Club focuses on competitive travel play and hopes to attract a wide variety of teams from throughout the state and, possibly, throughout the Pacific Northwest.

"All four tournaments will be Saturdays and Sundays," said Dan Hughes, president of Cherry City Baseball. "Historically speaking, we'll be looking to attract 40 to 100 teams to each tournament and we've got a lot of positive attention already."

The second WCP tournament at KLL Park, titled May Melee, will likely be the largest draw. So many teams participate that competition is spread over parks in Keizer, Salem and Albany. For such a large tournament, having a facility with well-kept fields of multiple sizes was a big factor when the groups

Please see TOURNEY, Page A6



In-N-Out traffic plans begin to crystallize

By **ERIC A. HOWALD**
Of the Keizertimes

The Keizer Station In-N-Out might not open until mid or late December if indications from a recent meeting between the corporation and city staff are any indication.

In a weekly update on city business, City Manager Chris Eppley said In-N-Out is likely to request a special event permit from the city at its second December meeting, Dec. 16. The permit would be required to put out signage directing traffic.

"I believe it is going to be very busy, but manageable given [In-N-Out's] willingness to expend whatever resources



File In-N-Out appears headed for a mid- to late December opening.

they need in order to keep the roads working," Eppley said.

Eppley said the plans are be-

ing drafted for increased traffic lasting two weeks, but added that three weeks is more likely

Please see TRAFFIC, Page A6



Greg Frank

Former fire chief passes

By **ERIC A. HOWALD**
Of the Keizertimes

Greg Frank, a former Keizer Fire District chief, Keizer First Citizen and businessman, passed away after a long battle with cancer Friday, Nov. 5.

Frank led KFD as chief for 17 years after starting as a volunteer, but he had always planned to be a police officer, he told the *Keizertimes* in 2007. His plans changed when he moved to Keizer and saw a department staffed with volunteers.

"How cool was that, and to ride on the back of a fire engine — what a rush," he said.

Frank said the memories from 26 years as a firefighter in Keizer surfaced as a kaleidoscope of images from watching friends and colleagues on big fires to assisting with everyday crises like falls and on-the-spot injuries, but one in particular elicited the most details.

"The many Candy Cane Days and how excited kids (both young and old) were when we stopped to give them a candy cane," he said.

In his parting message to the community, Frank said, "What an awesome place to call home and raise a family. Thanks for taking your time and investing it in your community — the dividends abound."

Please see CHIEF, Page A6

Services for MHS junior planned

A junior at McNary High School passed away unexpectedly on Tuesday, Nov. 12, and friends and loved ones have created a GoFundMe campaign to help with her funeral costs.

A funeral will be held on Saturday, Nov. 23, at 11 a.m.

at Dayspring Church, 1755 Lockhaven Drive N.E. and is open to the public.

Those wishing to contribute to the GoFundMe campaign can visit www.gofundme.com/f/paying-tribute-to-alli. At press time, the campaign had nearly reached its goal of \$7,000.

The McNary counseling department will be open on Monday, Nov. 25, for students needing additional support after the services this weekend.



Alli Colfax

Deck our walls with coloring contest
PAGE A4

Celtic soccer team honored
PAGE A2

K9 tracks fleeing suspect
PAGE A8

Basketball and wrestling previews
PAGE A14



Growing

to better serve the Keizer community

No need to travel all the way across town. Our Keizer location has now been expanded into a FULL SERVICE CLINIC.

We're here for you — now closer to home.

5825 Shoreview Ln, Keizer • 503-540-6471 1600 State St, Salem • 503-540-6300