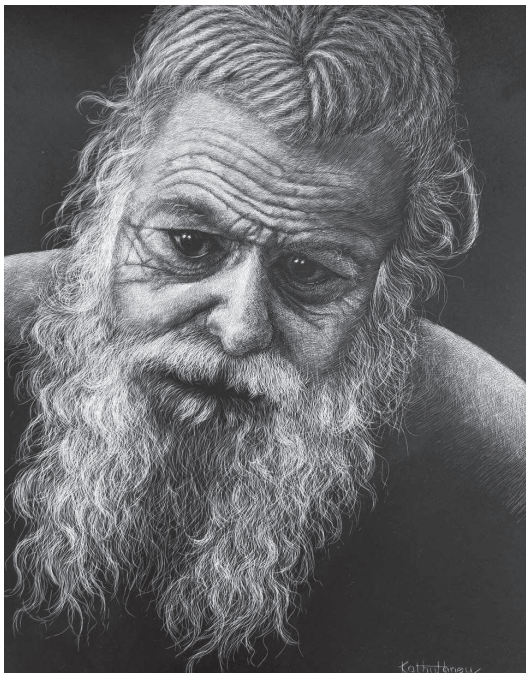


BW&G Show opens Nov. 1

The Keizer Art Association's most popular show of the year opens on Thursday, Nov. 1. The annual Black White and Gray Show at the Enid Joy Mount Gallery is comprised of art using black, white and gray colors only, including mattes and frames. The pinnacle of the show is the awards and artists' reception on Saturday, Nov. 10. Attendees of the show, which runs through Saturday, Nov. 24, are invited to vote for their favorite piece; the art with the most votes at the end of the exhibit will be honored with the People's Choice Award. The Enid Joy Gallery, at the Keizer Cultural Center, 980 Chemawa Rd. NE, is open Tuesday through Friday from 1 to 4 p.m. and Saturday from 10 a.m. to 4 p.m.




Sadhu by Kathy Haney, winner of Best of Show at 2017 Black White and Gray Show.

Expo Negocio slated Nov. 2



The Latino Business Alliance is hosting its 9th annual Expo Negocio Friday, Nov. 2. The event is free, but registration is required. Visit latinobizalliance.com for more information and to register. Expo Negocio is offered for Latino and non-Latino business professionals seeking to develop their knowledge and intercultural relationships. Expo Negocio is a free event held at Chemeketa Center for Business and Industry; located at 626 High Street in Salem, from 8 a.m. to 3 p.m. This event is an opportunity for business professionals to network, share economic insights and build a stronger business community through informative workshop sessions and powerful speakers in both English and Spanish. Kicking off Expo Negocio is Cafe' y Pan Dulce; where you have an opportunity to network, share your business and hear from City of

Salem Mayor Chuck Bennett while enjoying traditional Mexican bread. The three sessions throughout the day will include Trevor Leahy from the Small Business Advocacy team of the Secretary of State, who will share information to help everyone from aspiring entrepreneurs to established business and non profit organizations with resources. Emergency Manager Gregory Walsh from City of Salem will cover how to prepare your home or business for an emergency. Then Raul Valdivia, a certified public accountant will share information on how to prepare for an IRS audit, and best practices for bookkeeping, accounting systems and record keeping. The luncheon keynote speaker Wally Ybarra is a motivational speaker and consultant with experience across the United States, who engages people in ways of thinking that nurture and inspire them to be their absolute best.

KEIZERTIMES SENIOR HOUSING GUIDE

 	DIRECTIONS FROM KEIZER: From Verda Ln or Parkway, take Hyacinth to Portland Rd. Cross intersection, take right after gas station	UNIT TYPES: <ul style="list-style-type: none"> • semi-private memory care rooms • private memory care rooms 	MONTHLY RENT: starting at \$4,850	ALZHEIMER'S & DEMENTIA CARE: yes
	AMENITIES: <ul style="list-style-type: none"> • Respite & Short Term Care Available • Individualized Care • Secure Building • Common Gardens & Recreation Area • Home-like with short hallways to common areas • Watch & be part of the cooking process • Wholesome & Nutritious Meals • Feeding Assistance • Medication Management • Hygiene Assistance 			
3062 Hyacinth St NE, Salem, OR 97301 • 503-409-2426 • www.harmonyhousesalem.com • michelen@pacificlivingcenters.com				



	DIRECTIONS FROM KEIZER: Drive north on River Rd. Turn left on Wheatland Rd. Go 1.5 miles. On left side of road.	UNIT TYPES: <ul style="list-style-type: none"> • independent living includ. studio and 1-bedroom apartments, 2-bedroom cottages 	MONTHLY RENT: starting at \$1,692	ASSISTED LIVING AVAILABILITY: yes
	AMENITIES: <ul style="list-style-type: none"> • Not-for-profit, Christian community serving all faiths • Pets allowed • No Extra Charge for a 2nd person • 24-hour nurse on staff for emergency response • 3-delicious homecooked meals daily • Van service for shopping & medical appts • Housekeeping • Great Social Activities • Church Services 			
7693 Wheatland Rd N, Keizer, OR 97303 • 503-393-1491 • www.willamettelutheran.com • e-mail: kay@willamettelutheran.com				

	DIRECTIONS FROM KEIZER: I-5 South, exit left on Market St, left on Lancaster, right on Sunnyview, right on 45th Ave NE	UNIT TYPES: <ul style="list-style-type: none"> • independent living apartments • studio • 1-bedroom • 2-bedroom • cottages 	MONTHLY RENT: Cost Varies	ASSISTED LIVING AVAILABILITY: Call
	AMENITIES: <ul style="list-style-type: none"> • Staff on site 24/7 • Maintenance & Housekeeping • All utilities (except phone) includes basic cable • Transportation to appointments, shopping, events • Washer/Dryer hook ups and coin-free laundry • Salon on site • Daily activities • Chef-inspired meals and flexible dining 			
1950 45th Ave NE, Salem, OR 97305 • 503-589-1200 • www.thespringsliving.com • e-mail: lsmall@thespringsliving.com				

	DIRECTIONS FROM KEIZER: The Arbor is off River Rd, located back behind Saint Edward Church	UNIT TYPES: <ul style="list-style-type: none"> • private studio apartments with private bathrooms 	MONTHLY RENT: Cost Varies	TYPE OF CARE: Memory Care
	AMENITIES: <ul style="list-style-type: none"> • 24-hour staff • Basic medication management • Nutritious meals & snacks • Weekly housekeeping • Wireless Monitoring System • Indoor Courtyard • Cognitive and Behavioral Support • Beauty Salon • Daily activity & life enrichment programs • Activities of Daily Living Assistance 			
450 Claggett Ct N, Keizer, OR 97303 • 503-856-7440 • www.arboratavamere.com				

	DIRECTIONS FROM KEIZER: On River Road, one-half mile north of McNary Estates. Right on McGee Ct, take second driveway on left.	UNIT TYPES: <ul style="list-style-type: none"> • Assisted Living • Memory Care 	MONTHLY RENT: starting at \$2,775	ASSISTED LIVING AVAILABILITY: Yes
	AMENITIES: <ul style="list-style-type: none"> • State-of-the-art theater • Self playing piano • Raised garden beds • Personalized care plan • Freshly prepared gourmet meals 3 times daily • Life enriching, meaningful, stimulating activities • Enclosed courtyard with walking path • Private & semi-private Memory Care apartments 			
1165 McGee Court NE, Keizer, OR 97303 • 503-390-1300 • www.VillageAtKeizerRidge.com				

	DIRECTIONS FROM KEIZER: Take I-5 South, Hwy 22 East, Exit 13, turn towards Sublimity, right (East) on Church Street.	UNIT TYPES: <ul style="list-style-type: none"> • Assisted Living • Independent Living • Memory Care • Skilled Rehabilitation & Nursing Care 	MONTHLY RENT: Cost Varies	TYPE OF CARE: Full Continuum of Care
	AMENITIES: <ul style="list-style-type: none"> • 38-Acre Private, Family Owned Active Retirement Community • No Buy In • Apartments • Cottages • Café • Gift Shop • Beauty Shop • Pet Friendly • Duck Pond with Walking Areas 			
390 SE Church Street, Sublimity, OR 97385 • 503-769-3499 • www.MarianEstates.com				

	DIRECTIONS FROM KEIZER: Take Marion St. bridge, then take Rosemont Ave exit, then left on Edgewater St. We are 3 blocks down on the right.	UNIT TYPES: <ul style="list-style-type: none"> • Independent living residences • Residential care facility units • Memory care 	MONTHLY RENT: Cost Varies	RESIDENTIAL CARE AVAILABILITY: yes
	AMENITIES: <ul style="list-style-type: none"> • Only Life Plan Community (CCRC) in the area • Pool & Wellness Center • Wine & Coffee Bar • Beauty Shop & Nail Salon • Card & Game Room • 2 Libraries • Art & Crafts Center • Ceramics Studio • Woodworking Shop • Auditorium • Bistro • Art Gallery • Branch Bank • Guest Rooms • Fiber Arts Room 			
1955 Dallas Hwy NW, Salem, OR 97304 • 503-589-3734 • www.CapitalManor.com • e-mail: nlacy@capitalmanor.com				

	DIRECTIONS FROM KEIZER: On River Road, one-half mile north of McNary Estates.	UNIT TYPES: <ul style="list-style-type: none"> • Studio • 1 BR w/ deck or walk-in closet • 2 BR, 1 BA • 2 BR, 2 BA w/ deck or walk-in closet 	MONTHLY RENT: starting at \$1,350	ASSISTED LIVING AVAILABILITY: no
	AMENITIES: <ul style="list-style-type: none"> • Full kitchens in every apartment • Free WiFi • Flexible Optional Meals • Waist High Gardens • Full Activities Calendar • Weekly Excursions • Special Dietary Needs Met • Coffee Lounge • Housekeeping • Community Room • Activity Rooms • Resident Lounge • Beauty Salon • Transportation 			
1125 McGee Ct NE, Keizer, OR 97303 • 503-390-7700 • www.EmeraldPointeKeizer.com				