

Keizertimes

SECTION A

APRIL 20, 2018

\$1.00

By ERIC A. HOWALD
Of the Keizertimes

To call Jonathan Graf a puzzle-maker is something of an understatement.

The mazes he constructs on paper dance gleefully on the line between hobby and artistic pursuit. Some of his largest creations – like one titled *The Red Door* that has a working space of roughly 400 square inches – he's turned into prints. Others are etched into thick parchment paper that gives them the feel of relics. Smaller ones vary in size from 4-by-4-inch cards to large sketchbook pages.

While size and the intricacies of his work have changed over the years, the reason Graf has stuck with forging mazes hasn't.

"When I was about 10, I started making them in the classroom and getting in trouble, but it helped me focus in school. It helps me even now, especially when I am trying to focus. The only difference is now I know how to make it look like I'm taking notes," he said.

Graf is no ordinary maze-maker, but he started out the way most others do. The "easiest" way to make a maze is starting out with a large outline and adding smaller shapes with openings into the next smaller shape until the center of the largest object is filled. Then, most maze-makers map out the path they want the solver to take through the maze. At that point, the only task left is to close off all the other possible paths.

"That doesn't work for me because it feels like I can see the solution right away and I think others will, too," Graf said. "I know it's easy to cheat



Puzzle-maker aims to confound

mazes. If you start at the exit, you'll find your way to the entrance fairly quickly. I want my mazes to be just as difficult starting from the exit as it is if you start at the beginning."

Graf has an idea of the overall maze he wants to create in his head before he begins, but everything is constructed in

the moment, section by section, without plotting out the solution in advance.

In his *Red Door* maze, which has a large, red rectangle in the center, solvers will know they are on the right path if they've touched all four inner and outer corners. However, there's another wrench

in the works, too. None of lines guiding the solver touch another or cross paths. That means there is no easy way to eliminate dead-end options because the whole thing looks like the folds of a two-dimensional brain.

Inspiration for *Red Door* came from a combination of

the cover to Carl Jung's *The Red Book* and listening to an audiobook version of Herman Melville's *Moby-Dick* while he made the maze. The final version took somewhere between 40 and 60 hours to complete.

Please see ESCAPE, Page A9



Rip City

Keizer resident Bo Lane, a lifelong Portland Trail Blazers fan and graphic artist, combined his two passions to win the Blazers Fan Appreciation Poster Contest. See Page A4 for the full story.

Poster by Bo Lane

Help envision River Road's future April 26

By ERIC A. HOWALD
Of the Keizertimes

The Keizer Planning Department is asking everyone with an interest in shaping the future of River Road and Cherry Avenue to turn out for a public meeting and help guide the process Thursday, April 26.

The meeting begins at 6 p.m. at the Keizer Civic Center.

"We're asking the community to come and tell us their vision for River Road and Cherry

Avenue. The first part of the meeting will be a presentation, but then we will have dedicated stations where people can go to talk about traffic, safety, aesthetics and the types of development they would like to see," said Nate Brown, Keizer community development director.

City staff expect to update or replace the existing plans for Keizer's main commercial areas at the end of the process. Depending on how residents want the areas develop, it might mean

Please see RIVER RD, Page A9



KEIZERTIMES/ERIC A. HOWALD

Students at Classic Tap learn a new series of steps during a class Monday, April 16.

Classic Tap expands to three studios

By ERIC A. HOWALD
Of the Keizertimes

The sign still says Classic Tap, but there is more happening behind the doors than ever.

The longtime Keizer dance studio recently moved to new digs at 5063 River Road N. in Schoolhouse Square. Its new home is less than 1,000 feet from the old Chemawa Road location, but three studio spaces are allowing owner Liz Goff to offer more classes and more classes simultaneously.

"Even though we have a lot of space during the day, the main times for classes are between 4 p.m. and 9 p.m.," Goff said. "We have quality teachers and we wanted a quality space."

Goff took over the business from her mother, Jane Radatz, and uncle, Danny Wold, in 2014 and has been working

ever since to expand the options of available classes.

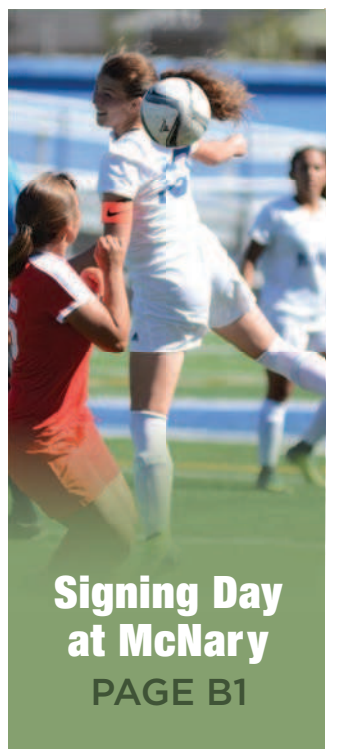
"We still offer tap to all ages, but we have ballet, jazz and hip hop, also contemporary dance along with yoga and modern dance," Goff said.

Visit classictap.com for the full list of offerings, times and tuition costs.

When Goff was looking for a new space, two things took priority: students safety in parking lots and easy access to other places in the community.

"We've got parents that drop their kids off and go get coffee. Most importantly we wanted good parking and safety for the kids. Darren Bloch (owner of Schoolhouse Square) was great to work with and he's a big advocate for the businesses here being

Please see STUDIO, Page A6



Signing Day at McNary
PAGE B1



A prom alternative
PAGE A3



Tuba maestros
PAGE A12



Kiser to All-Stars
PAGE B4



THE BMW OF SALEM PRICE MATCH PROMISE

The Ultimate Driving Machine

You should be shopping for your next new BMW at BMW of Salem. Because that's the only place you'll find the BMW of Salem price match promise. We'll match the price on any identically equipped BMW from any of our competitors.

Special lease and finance offers will be available by BMW of Salem through BMW Financial Services.

BMW of Salem

1151 Van Ness Ave NE, Salem, OR 97301 . (855) 408-6768 . BMWofSalem.com

Present any BMW dealer's unexpired new vehicle advertisement for verification. Other Lithia dealerships do not qualify. The competing offer must be available for immediate purchase at the advertised price. The competitor's vehicle must be identically equipped as our in stock vehicle used for comparison.