

# THE STAYTON MAIL

Has the Largest Circulation of Any Paper in the Santiam Valley—It Covers the Territory Like a Blanket.

22nd Year, No. 43.

STAYTON, MARION COUNTY, OREGON, THURSDAY, OCTOBER 26, 1916.

Serial No. 1080

## SAMPLE BALLOTS FOR ELECTION NOW OUT

Linn County Furnishes Three Candidates For Congress—Two Reside In Albany Now

## SOME LITTLE OPPOSITION

Chances For Republicans Landing Every Office Getting Stronger Every Day As Election Nears

Sample ballots are out, and below are given the full list of candidates to be voted for Tuesday, Nov. 7, 1916.

The ballot is headed by the list of candidates for president and vice president with Charles Evans Hughes and Charles Warren Fairbanks, the Republican nominees, at the top of the list. The other candidates are Woodrow Wilson and Thomas R. Marshall, Democratic candidates; J. Frank Hanly and Ira Handrith, prohibition candidates; Allen A. Benson and George R. Kirkpatrick and one lone elector Emmett Callaghan running with John M. Parker as candidate for vice president on the Progressive ticket.

Three candidates are up for congressmen from the first district and all three are Linn county men. W. C. Hawley, the Republican nominee, owns a large farm near Knox Butte and plans to make Albany his home when he retires from congress. He is opposed by Mark V. Weatherford of Albany, Democratic nominee, and W. S. Richards of Albany, Socialist.

Ben W. Olcott, the present secretary of state is up for re-election with the republican-democratic-progressive nomination and is opposed by E. L. Cannon, a Socialist.

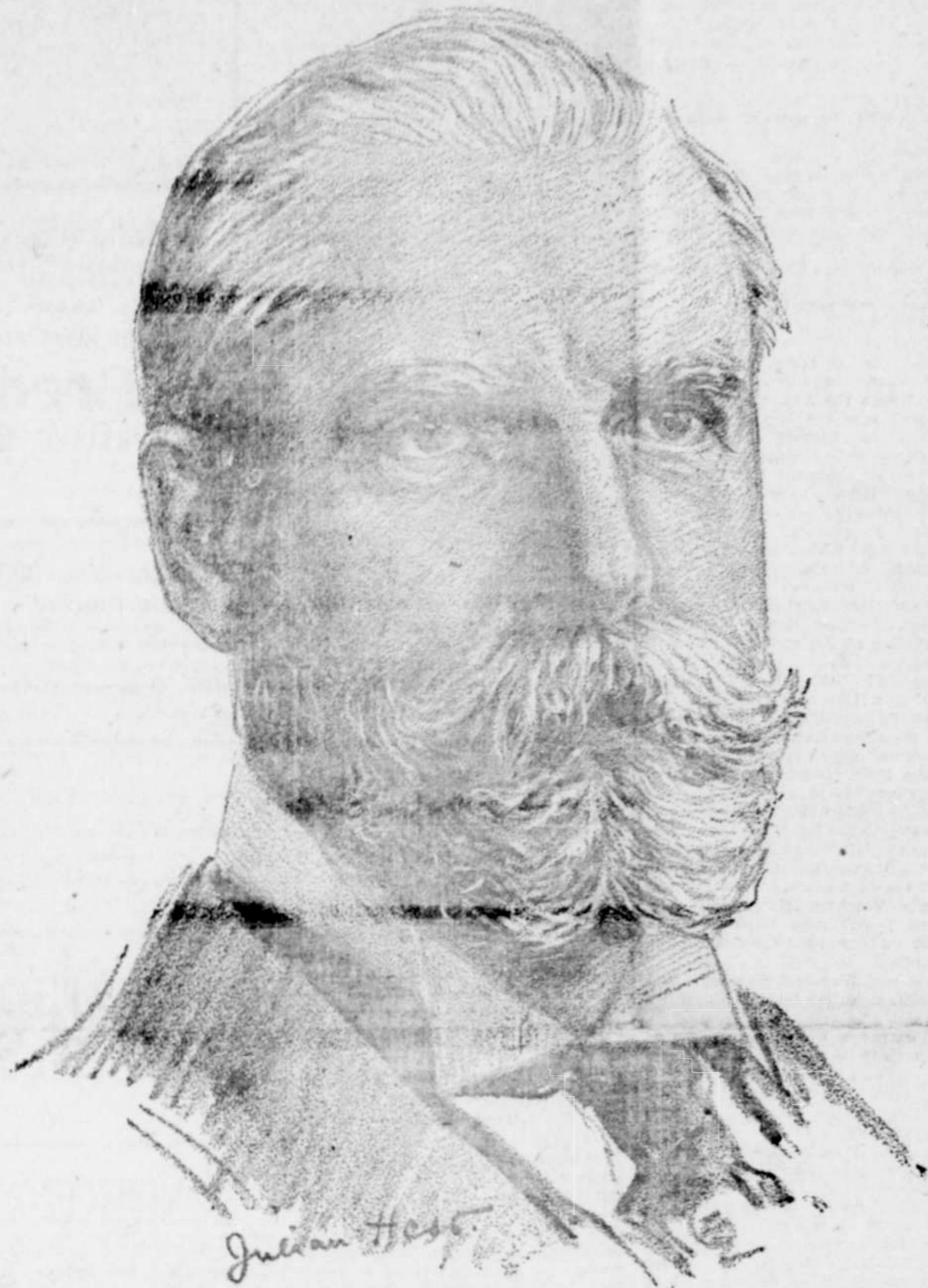
Five men are aspiring to positions on the supreme bench. Republican nominees are the two present incumbents, George H. Burnett and Frank A. Moore who are up for re-election. They are opposed by Turner Oliver, Democrat, C. J. Bright, prohibitionist and J. E. Hosmer, socialist.

There are three candidates for the office of Dairy and Food Commissioner. John D. Mickle has the republican-democratic-progressive nomination. D. W. McKinnon is the socialist and A. G. Rempel is the prohibition nominee.

In the Western Oregon district Fred G. Buchtel, republican-progressive, is

(Continued on last page)

## CHARLES EVANS HUGHES



Forrest Mack and E. Taylor were Salem visitors Monday.

## GEORGE G. BINGHAM WILL MAKE GOOD CIRCUIT JUDGE IS OPINION

At the request of numerous friends Mr. George G. Bingham consented to become a candidate for the nomination for the office of Circuit Judge of this district and at the recent primary election was duly chosen as a regular nominee for that office and is now a candidate for re-election in November.

It is now the wish and purpose of his supporters to do whatever may properly be done to further his candidacy for that office and secure his election, and to that end it has been deemed advisable to call attention, in this manner, to Mr. Bingham's candidacy, point out briefly his eminent qualifications and fitness for the office for which he has been nominated and ask your assistance and cooperation in this important matter.

Mr. Bingham's high ideals as to the proprieties in such case will greatly restrict his activities in his own behalf. We would not wish it understood, however, that Mr. Bingham is a reluctant candidate or that he purposes to remain inactive or maintain the attitude of one having an honor thrust upon him. On the contrary he is highly grateful for the honor bestowed in selecting him as the nominee, appreciates fully the honor and dignity of the office to which he aspires, is quite in earnest in his candidacy and will take such course as may be fit and seemly for one seeking a judicial office.

Mr. Bingham has held prominent place in the active practice of the law in this district for the past 36 years, is an able lawyer, has had extended practice in all departments of the law and in all the courts of the State, is tem-

peramentally judicial and normally free from partizanship, is widely known and universally esteemed. While he has held no judicial position it is our opinion that he has heard and satisfactorily determined and amicably adjusted more contests in his office than he has tried out in court. It is his theory and he has acted upon it very much, if not most, litigation arises from misunderstandings either of the law or the facts and that a calm and clear presentation of the facts and of the law applicable will usually result in harmonious settlement. He has, therefore, cultivated the judicial state of mind, and is free from bias.

The following taken from the Albany Herald shows as much as anything what is thought of Bingham and Kelly.

James Van Winkle, chairman of the Linn County Republican Central Committee, has received a letter from Geo. H. Burnett of the State Supreme Court regarding the two Republican candidates for Circuit Judge in this district, in which he strongly recommends the election of both Judge Kelly, who is up for re-election, and George G. Bingham, of Salem, who has been nominated as Judge Kelly's running mate, there being two positions open. The letter follows:

Salem, Ore., Sept. 15, '16

Mr. J. S. Van Winkle, Albany, Ore.  
Dear Sir: There are two Circuit Judges to be elected next November in the judicial district composed of Linn and Marion Counties. Percy R. Kelly, of Albany, and George G. Bingham, of

(Continued on last page)

## NOTICE

THE LATEST

**B. S. O. E.**  
INFORMATION GRATIS

Call at the Store, Will Explain

W. F. KLECKER

## Republican Rally

Star Theatre  
Tuesday Evening

Oct. 31

At 7:30

Gov. Withycomb

And County Candidates will talk

Everyone Welcome Come!

## "THE DEEP PURPLE IS VERY POPULAR

In a talk with Jack Waltmeyer, manager of the Seio Dramatic Club, he states that their new play, "The Deep Purple" continued to play to well filled houses at Mill City Oct. 19, and at Sublimity Oct. 20th.

This company is getting a reputation that is more than local, and it is the conceded opinion of all that they are much better than the ordinary "one night standers" that come through the country. Be sure and see them the next time you have a chance.

A. Wolf of near Ainsville had to have Dr. Brewer remove an inch-long splinter from his hand Monday.

## RECRUITING OFFICER HERE

E. L. French, Recruiting Sergeant for the regular army, from Salem, is in the city to see any young men who are contemplating entering the army. He also announces that the postmaster is recruiting agent for this community and will be glad to accept men who desire service with the government. Owing to Congress authorizing a large increase in the army, there are greater opportunities now than ever for ambitious young men.

Sgt. French is at the Hotel Stayton.

F. Silhavy upset with a load of hay above Mehama one day last week. No injuries except a few bruises.

## WILBUR WOOLEN MILL STORE

AT THE MILLS

Headquarters for Fall and Winter clothing as follows:

Blankets Mackinaw Coats  
Robes Underwear  
Flannels Stockings and Sox  
Dress Goods Wool Batts

Sweaters for Men-Women-Children

You will find a large, and complete stock of the above goods at the Mills for inspection—prices reasonable.

Before purchasing, look over this immense Stock of woolen goods and get our prices.

IT WILL PAY YOU

Mail orders filled same day as received  
Remnants and Mill-end goods at greatly  
Reduced Prices

Wilbur Woolen Mills Co.  
STAYTON, ORE.

## DITTER, BELL CO'S. OCTOBER SPECIALS

Royal Baking Powder, Pound Can	43c
Schilling's Baking Pow. Pound Can	43c
K. C. Baking Powder 25c Can	19c
Gilt Edge Shoe Polish 25c size	19c
Royal Club Tomatoes 2 cans for	25c
Seaport Tomatoes 3 cans for	20c
Royal Club Raisins, Pound pkg.	10c
Standard Sweet Corn 3 cans for	25c
Gold Dust 1 pkg. to customer	15c
5 gallons Coal Oil in bulk	60c
50 pound Sack Dairy Salt	40c
Mason qt. Fruit Jars 1 doz.	62c
Mason 1-2 gal. Fruit Jars 1 doz.	88c
Economy qt. Fruit Jars 1 doz.	95c
" 1-2 gal. Fruit Jars 1 doz.	\$1.25
Golden State qt. Jars 1 doz.	84c
" " 1-2 gal. Jars 1 doz.	\$1.10
Crystal White Laundry Soap 6 Bars	25c
Bob " " " " "	25c
Royal " " " " "	25c
Dress Gingham, 14-15c grade yd.	12c
25c Pickaninny Hose	22c

## OCTOBER SPECIALS

Cash or Trade Only

DITTER, BELL & CO.

Sublimity, Oregon