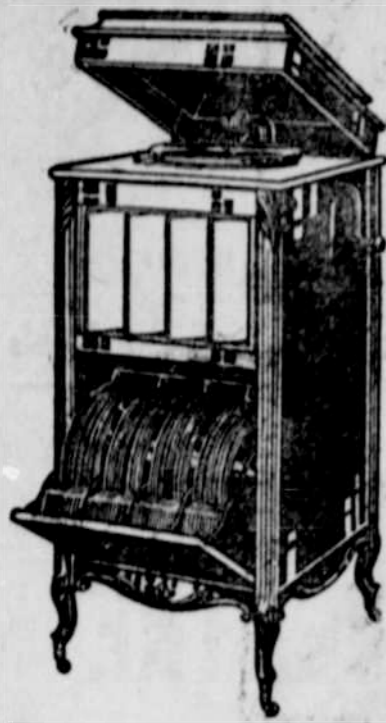


Columbia Grafonola Mignonette



For every musical occasion, for informal dances, or intimate home hours the Columbia Grafonola is the ideal musical instrument.

This perfect instrument can be had, including 32 selections of assorted music, for only

\$125.50



Write for Catalogues
EASY TERMS

LEARN AUTOMOBILE REPAIRING AND DRIVING
at the best equipped, most up-to-date and only practical Automobile School in the Northwest.
L. & M. Auto Repair Co., 369 Hawthorne Ave., Portland, Or.

WEEKS' BREAK-UP-A-COLD TABLETS
A guaranteed remedy for Colds and La Grippe. Price 25c of your druggist. It's good. Take nothing else.—Adv.

YOUNG MAN, BE A BARBER. Learn a Trade. Be Independent. Trade taught in eight weeks; tools free. Commissions paid while learning; position secured. Write for free catalog.
MULLER COLLEGE, Portland, Or., N. 2nd St., Spokane, 226 Main Ave.; Seattle, 109 Main St.

Origin of the Slavs.
The Slavs belong to the "Indo-European" race, although it is a question these days as to whether the Aryans as the race is sometimes called, had their original home in Asia (around the Caspian) or in Europe. At any rate, the Slavs appear in Europe contemporaneously with the other Indo-European families to which they are related.

Charley's Compliment.
Little Charley was saying good-night. After kissing his grandmother, uncle and father, he came to his mamma. "Why do you kiss me last?" she said. "Oh, well," said the little fellow, "you see I don't want your kiss to come off."

MONAMOBILE Oils and Greases

are the goods of QUALITY.
Oils and Greases for AUTOMOBILES.
Oils and Greases for TRACTION and HARVESTERS.
Oils and Greases for STEAM ENGINES.
Oil comes in 1, 5, 15, 32 and 55 gal. pails.
Grease comes in 1, 2 1/2, 5, 10, 15, 25 lb. and up.
Write us for prices and particulars.

PORTLAND AUTO OIL CO.
Phone Marshall 1216. 68 Fourth St., Portland, Or.

EAST OREGON JACK FARM

B. F. SWAGGART, Prop.
"John L. Sullivan" a 3-year-old Jack raised on this farm.
Breeder of Jacks, Thoroughbred Saddle, Relay and Running Horses; Berkshire Hogs.
Lexington, Oregon.

TWO CARLOADS OF IVER JOHNSON BICYCLES

To be closed out at Actual Cost
We are going out of the Bicycle Business and will sell at Retail all our High Grade Iver Johnson Bicycles at the following prices:
Ladies' Roadster, Model 1497-L, complete with Coaster Brake, Mudguards and Tires. Regular \$35. Wholesale, at \$25.00.
Men's Roadster, Model 1497, equipped as above, regular \$35, at \$25.00.
Heavy Service Wheel, Model 1498-S, fully equipped. The Finest Wheel in America, regular \$50.
Special, \$40.00.
This will be your only opportunity to get the Highest Grade Wheel manufactured at actual cost. All wheels fully guaranteed.
H. T. HUDSON ARMS CO.
110 Third St., Portland, Ore.

P. N. U. No. 20, 1915

WHEN writing to advertisers, please mention this paper.



COLT DISTEMPER

You can prevent this loathsome disease from running through your stable and cure all the colts suffering with it when you begin the treatment. No matter how young, SPOHN'S is safe to use on any colt. It is wonderful how it prevents all distempers, no matter how colts or horses at any age are "exposed." All good druggists and turf goods houses and manufacturers sell SPOHN'S at 50 cents and \$1 a bottle; \$5 and \$10 a dozen. SPOHN MEDICAL CO., Chemists and Bacteriologists, Goshen, Ind., U. S. A.

DOWN the STORIED RHINE

FIRST among the commercial rivers of civilization, the most important geographical feature of central Europe, a hotly contested boundary for more than two thousand years, one of the richest among the streams of the world in legend and folklore, and incomparable for the beauties of its course, when one calls to mind the Rhine of Germany he thinks upon one of the most important elements of the culture and the history of his race, whether he be of its Latin or its Teutonic branch.

The Rhine and the Germans came upon the stage of history together, and their fates have been indissolubly bound together ever since, says the National Geographic society's bulletin. His kindred with this mighty river, Father Rhine, is one of the more conscious elements of each German's life, and to this his folklore, his literature, his war songs, his opera and his blood offerings have testified. Few geographical features have af-



BINGEN AND THE ROMAN BRIDGE.

fects the conscious life of a race so deeply as has the German Rhine. Rising in the highest Alps in central Europe, the Rhine reaches the North sea after a journey of 850 miles, and the last part of its course is through a lowland whose surface is below the tides' crest. The river gathers its water at the base of melting glaciers, plunges over great rock masses toward its lower levels, cuts through the wildest mountain valleys, traverses a wonderful high, broad plain, and then, entering its famous gorge, wanders through exquisite panoramas, through a lane everywhere mantled with ruins of historic castles, abbeys, churches, and every foot of its way celebrated by legend or history. After emerging from its gorge, it flows through a plain where powerful steel, textile and chemical industries center. Through Germany and Holland the Rhine forms the principal water avenue of central and western Europe, and an enormous commerce is handled through its ports.

The Rhine is international. It is divided between Switzerland, Germany and Holland. That part of the river which lies in Germany, 450 miles in length, has been most disputed. The French have laid claim



CASTLE OF GUTENFELS AND ISLAND FORTRESS OF THE PFALZ

WHY DINING CAR CHEFS PREFER KC BAKING POWDER

Those who have had cakes ruined by jarring the stove, slamming the oven door or a heavy footstep, may have wondered how the dining car chef can turn out such marvelous biscuits, hot breads and pastry when his oven is being incessantly jarred and jolted and shaken by the motion of the train.

To get pastry to raise and stay raised under these conditions, a baking powder must be used that continues to give off its leavening gas—that sustains the raise—until the dough is baked through.



Dining Car Chefs have found a baking powder exactly suited to their needs in KC and you will find it just as well suited to your requirements. KC is really a blend of two baking powders, one active as soon as moistened, the other requiring both moisture and heat to start the generation of leavening gas. No matter how moist and rich you make your cake, KC Baking Powder will sustain the raise until a crust is formed and all danger of falling is past.

KC Baking Powder is pure and healthful. It is guaranteed under all pure food laws, and is guaranteed to please you. And it is sold at a reasonable price—no baking powder should sell for more.

Try a can at our risk and be convinced.

Depends on the Man.
Any woman can have any man she likes if she pursues him vigorously enough or eludes him—either does. There are two ways for a woman to get what she wants. Either chase it for all she is worth, or run from it in the same manner. It depends on the man—"Time o' Day," by Doris Egerton Jones.

Constipation causes and aggravates many serious diseases. It is thoroughly cured by Dr. Pierce's Pleasant Pellets. The favorite family laxative.

Sex and Ships.
It is impossible to say just why a ship is always, or generally, referred to as "she." It is a custom, and like most customs, especially those that are ancient, is veiled in mystery. Probably there is no particular "reason" for this custom.

The Residue.
"After coal, what?" asks an esteemed, in manner of speaking, contemporary. Our own experience indicates ashes, to be followed at more or less long intervals by an ash wagon.—Cleveland Plain Dealer.

YES, RESINOL CLEARED AWAY EVERY PIMPLE

At least once a day—usually twice—I bathed my face for several minutes with plenty of resinol soap and hot water and applied a little resinol ointment very gently. I let this stay on for ten minutes or so, and then washed it off with resinol soap and more hot water, finishing with a dash of cold water to close the pores. I was astonished how quickly the healing resinol medication soothed and cleansed the pores, removed pimples and blackheads, and left my complexion clear and velvety.

Physicians have used resinol ointment and resinol soap for 20 years in the treatment of itching, burning, skin eruptions. At all druggists.—Adv.

Most Accurate Clock.
An observatory at Berlin holds the world's most accurate clock, which is kept in an air-tight cylinder in the basement of the building.

Not Hard to Please.
"De man dat likes to hear himself talk," said Uncle Eben, "is mos' always mighty easy interested."

This R is for You!

If You Suffer From Hot flashes or dizziness, fainting spells, hysteria, headache, bearing down pains, nervousness—all are symptoms of irregularity and female disturbances and are not beyond relief.

Dr. Pierce's Favorite Prescription

is directed to the real cause and promptly removes the disease, suppresses the pains and nervous symptoms and thereby brings comfort in the place of prolonged misery.

It has been sold by druggists for over 40 years, in fluid form, at \$1.00 per bottle, giving general satisfaction. It can now be had in sugar coated tablet form, as modified by R. V. Pierce, M. D. Sold by all medicine dealers or trial box by mail on receipt of 50c in stamps.

Every sick woman may consult us by letter, absolutely without charge. Write without fear to Faculty of the Invalids' Hotel, Dr. V. M. PIERCE, President, 663 Main Street, Buffalo, New York

DR. PIERCE'S PLEASANT PELLETS REGULATE THE LIVER

Wonderful Blood Remedy That Works in the Tissues

The Very Latest Theory About How and Why the Blood is Disordered.



S. S. S. Means Pure Blood Which Insures Long Life and Health.

The great experts in Chemistry and Physiology now declare what has all along been contended by the Swift Laboratory that the germs of blood disorders find lodgment in the interstices of the tissues.

And herein is where S. S. S. goes to work rapidly, effectively and with wonderfully noticeable results.

This famous blood purifier contains medicinal components just as vital and essential to healthy blood as the nutritive elements of wheat, roast beef, and fats and the sugars that make up our daily ration.

As a matter of fact there is one ingredient in S. S. S. which serves the active purpose of stimulating each cellular part of the body to the healthy and judicious selection of its own essential nutriment. That is why it regenerates the blood supply; why it has such a tremendous influence in overcoming eczema, rash, pimples, and all skin afflictions.

And in regenerating the tissues S. S. S. has a rapid and positive antiodontic effect upon all those irritating influences that cause rheumatism, sore throat, weak eyes, loss of weight, thin pale cheeks, and that weariness of muscle and nerve that is generally experienced, by all sufferers with poisoned blood.

Get a bottle of S. S. S. at any drug store, and in a few days you will not only feel bright, and energetic, but you will be the picture of new life.

S. S. S. is prepared only in the laboratory of the Swift Specific Co., 201 Swift Bldg., Atlanta, Ga. Who maintain a very efficient Medical Department, where all who have any blood disorder of a stubborn nature may write freely for advice.

S. S. S. is sold everywhere by all drug stores.

Beware of all attempts to sell you something "just as good." Insist upon S. S. S.