

Panama-Pacific International Exposition, Greatest and Most Marvelous of All Celebrations, Opens Completed In Every Detail on Feb. 20, 1915

Forty of the World's Great Nations to Join With America In Celebrating the Opening of the Panama Canal In a Conclave Unsurpassed In History.

Wonderful Exhibits From All Lands Show the World's Best Progress

From Beginning to End Magnificent Panama-Pacific International Exposition Will Abound With Superb Educational and Entertainment Features.

By HAMILTON WRIGHT.

THE construction of the vast Panama-Pacific International Exposition at San Francisco was 95 per cent completed three months before the opening day, on Feb. 20, 1915. The early installation of thousands of tons of rare and costly exhibits from all parts of the globe and the participation of forty of the world's great countries have assured a celebration that will be unrivaled in its splendor, magnitude, interest and comprehensiveness.

From its opening until its close, on Dec. 4, 1915, the Exposition will abound with original features collected at an expenditure of many millions of dollars. It will present a cross section of human achievement. The Pan-

ama canal in a single day, and, far in advance of its opening, the Exposition had created an unprecedented interest throughout the world, and its opening was eagerly awaited.

In keen competitive exhibits there will be presented more than 80,000 single exhibits and groups of related exhibits portraying the results of the world's best efforts in recent years.

This wonderful Exposition, presented at an outlay of more than \$60,000,000, celebrates a contemporaneous achievement, the building of the Panama canal, and all exhibits that are entered for competitive award will be those that have been originated or produced since the great Louisiana Purchase Exposition at St. Louis ten years ago. The possible exception to this rule will be where earlier exhibits are

shown to illustrate the evolution of the processes of manufacture—as, for example, a display of a model of the first cotton gin in connection with the marvelous equipment into which it has evolved.

Many of the displays will be especially adapted to study by the delegates to great national and international congresses and conventions, of which more than 300, embracing almost every phase of human activity, have voted to meet in San Francisco in 1915. Delegates to the congresses interested in social progress and wel-

fare work will, for example, see in the Palace of Mines an exhibit three-fourths of an acre in extent, illustrating the manner in which the largest steel corporation in the world is caring for and plans to still further advance the welfare of its employees. In the Palace of Education they will be interested in a great United States government exhibit.

The great war in no way has diminished the prospect of attendance at the Exposition, and thousands of Americans will for the first time enjoy the educative trip across their native land. After the outbreak of the conflict the number of conventions deciding to meet in San Francisco proportionately increased. One of the most important of the assemblages will be the international engineering

Big International Exposition's Amusements Novel and Wonderful

President Wilson Will Visit Panama-Pacific Display of Nations via Panama Canal—Vanderbilt Cup Race and Grand Prix Will Be Held In San Francisco.

By HAMILTON WRIGHT.

WONDERFUL and novel amusements, parades and pageants of the oriental countries, auto and yacht races and athletic contests will be observed upon a scale of unexampled magnitude and grandeur at the Panama-Pacific International Exposition. The extensive participation of China, Japan, Siam and Indo and Cochinchina, when taken in connection with the plans already made and with the interesting oriental population of San Francisco, assures such spectacles as have never before been seen in the occident. Pageants of miles in length set off by wonderful floats and marvelous pyrotechnics will wind through the streets of San Francisco.

There will be held throughout the

entire period of the Exposition, which opens Feb. 20, 1915, a series of great events, including sports and athletic contests of many kinds conducted upon a scale of great magnitude.

The Vanderbilt Automobile Cup Race and the Grand Prix, the two supreme events of the automobile year, will be held upon a four mile course, embracing a circuit of the Exposition palaces, a spectacular background far excelling in beauty and grandeur any which ancient Rome beheld during its historic chariot races. The Vanderbilt Cup Race will take place on Feb. 22 and the Grand Prix on Feb. 27, 1915. Great motorboats of the deep sea cruiser type will race for a \$10,000 prize from New York through the Panama canal to the Golden Gate. A series of international yacht races in the twenty-one meter class will be held in San Francisco bay. President Woodrow Wilson, Emperor William of Germany and King George of England have each offered trophies in these events. Swimming, water polo, fly casting, canoeing, football, baseball and long distance foot racing are included in a series of more than 200 different kinds of contests. President Wilson himself will attend the Exposition, and it is probable the members of congress will attend in an especially chartered steamer.

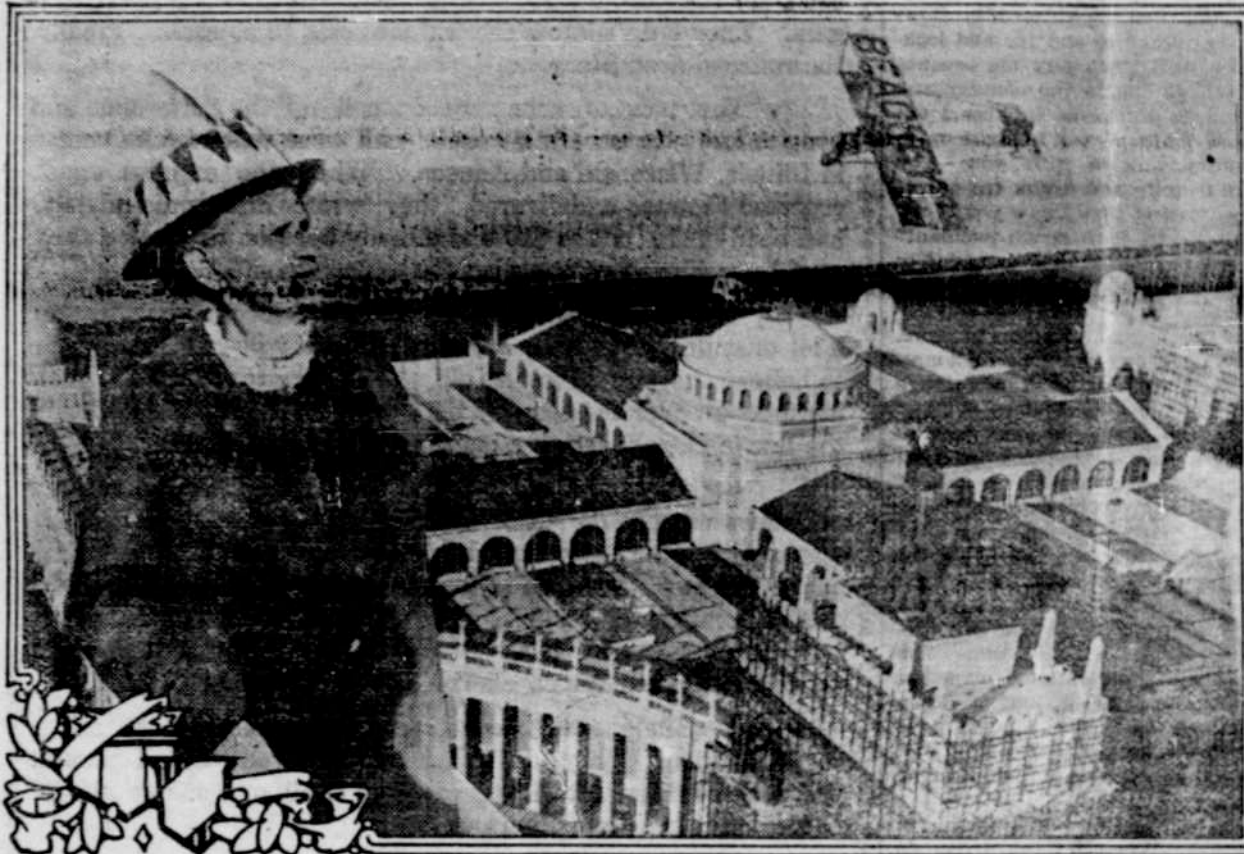
Of international interest will be the greatest live stock show in the world's history. More than \$500,000 will be awarded in prizes in a continuous live stock exhibit. Rare and valuable breeds of all kinds of live stock from distant countries of the globe will be shown. Specimens of the famous Chillingham wild white cattle will be exhibited for the first time. With the exception of two specimens at the London zoo, this breed has never been shown outside of Chillingham park, England. These cattle are pure white, with black noses, black tips to the ears and black horns. An international sheep shearing contest will be one of the unique exhibitions.

For the musical events there has been built by the Exposition the magnificent Festival Palace upon the grounds. This is equipped with a wonderful pipe organ, upon which Mr. Edwin Lemare, world famous organist, among other celebrities, will give a series of recitals. The International Eisteddfod will at San Francisco complete for \$25,000 in cash prizes. More than 20,000 singers will participate in

this event. The famous Salt Lake Mormon choir, the deep toned plaintive singers of Hawaii and even a chorus of fifty Maorian singers will take part in the choral events. At an expenditure of \$1,250,000 the Exposition has constructed a great Auditorium in the civic center of San Francisco, which will be used by the great conventions and song festivals. Mr. and Mrs. Douglas Crane will present their latest terpsichorean novelty, the "Exposition Tango;" Mr. Harry Lauder will sing the Exposition ballad.

The amusement section of the Exposition, the "Zone," corresponding to the famous "Midway" at the World's Columbian Exposition at Chicago, will carry out the purpose of the Exposition to give every feature a high educational value.

concession is built upon so prodigious a scale that visitors will view the canyons from a standard gauge railway coach running on a standard gauge track. A huge working model of the Panama canal is so extensive that visitors seated in comfortable theater chairs will be carried along the route of the canal upon a movable platform, and a dictaphone at the arm of each chair will describe each scene as it comes into view. A novel amusement feature will be provided by working submarine boats of sixty-five tons displacement, which will operate in an artificial lagoon. The Aeroscope, a huge inverted pendulum, operating like a giant seesaw, with a great balancing weight on the short end and a car for passengers at the extremity of its long



Photograph courtesy San Francisco Examiner.

THE MOTHER OF LINCOLN BEACHEY, FROM THE TOWER OF JEWELS, 435 FEET ABOVE THE EARTH, AT THE PANAMA-PACIFIC INTERNATIONAL EXPOSITION, WATCHES HER SON LOOP HIS ONE THOUSANDTH LOOP.

When Lincoln Beachey, a son of San Francisco, on the occasion of his homecoming after breaking all world records as a daredevil loop of 999 loops, performed two entirely new and death defying stunts over the completed palaces of the Panama-Pacific International Exposition it was his aged mother who for the first time waved him on to fresh achievements. Mrs. Beachey held a place of honor, 435 feet up in the air, on the tiptop of the wonderful Tower of Jewels. From this vantage she was able to watch every erratic move of her daredevil son. She cried out only once. That was when he wrote the figures "1000" against the clouds, high above the two miles of completed exhibit palaces, significant of the looping of his one thousandth loop.

ama canal is today open and doing business on a far vaster scale than was predicted for it, and the Exposition, which celebrates the opening of the canal, is today revealed as the greatest manifestation of national achievement in American history. Here will be a neutral ground where even nations engaged in warfare will display on a scale never before equaled their progress in the arts, industries and sciences of peace.

Within three months before the opening of the Exposition as many as 2,000 tons of consignments had reached San

shown to illustrate the evolution of the processes of manufacture—as, for example, a display of a model of the first cotton gin in connection with the marvelous equipment into which it has evolved.

Many of the displays will be especially adapted to study by the delegates to great national and international congresses and conventions, of which more than 300, embracing almost every phase of human activity, have voted to meet in San Francisco in 1915. Delegates to the congresses interested in social progress and wel-

congress, at which its distinguished chairman, Colonel George W. Goethals, will preside.

The foreign participation will be notable. The nations are not attempting to show everything that they produce, but will lay especial emphasis upon those products in which they excel. In the Danish display, for example, will be shown products of the Royal Danish porcelain factory at Copenhagen. Japan in her exhaustive exhibit will display priceless works of art, loaned by direction of the Imperial household and many of which could not be duplicated. From Italy will be shown historic paintings of the old masters, hitherto never exhibited in America in the originals. From China there have reached San Francisco selections of exhibits collected under the supervision of the governors of the Chinese provinces. Rare silks and satins, carvings, inlay work in the precious metals, exhibits of the transportation methods employed in the old China and the modern methods used in the awakening republic will be shown.

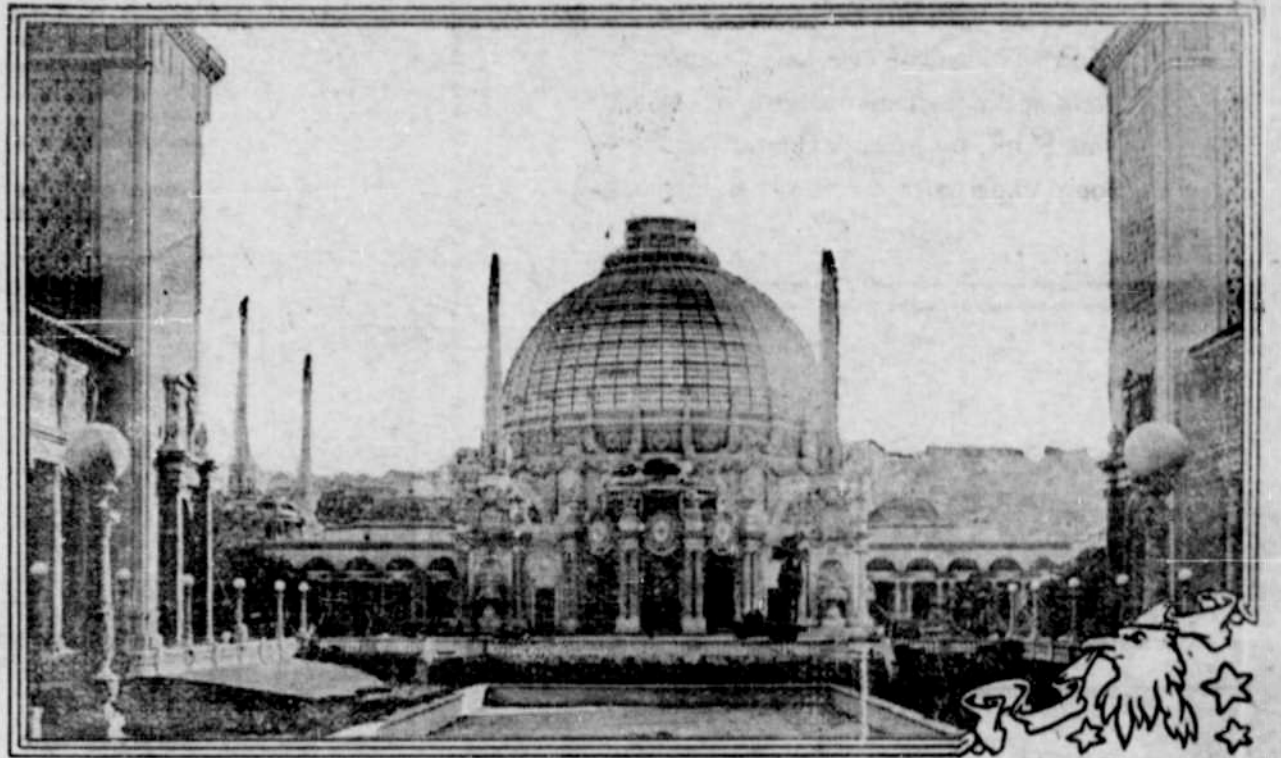
New Zealand will make a marvelous exhibit of its rare woods, of its fescues, of its superb scenic charms. A large number of rare giant tree ferns from New Zealand will be found growing on the Exposition grounds.

The Argentine Republic early set aside a larger sum than any ever appropriated by a foreign nation for representation in an American exposition. The modern cities of Argentina, the schools, churches, libraries, the great live stock and agricultural interests will be extensively portrayed, and the mutual interests of South America and North America will be emphasized in almost every conceivable manner. From South Africa will be shown diamond exhibits and methods of extraction. The magnificent Canadian displays will review not only the widely known agricultural wealth, but will illustrate the scenic charms of the great Dominion, of snow clad mountain peaks, of far-reaching forest, of inland lakes in chains of silver and rushing mountain streams.



"THE END OF THE TRAIL," PANAMA-PACIFIC INTERNATIONAL EXPOSITION, SAN FRANCISCO, 1915.

This photograph shows James Earle Fraser's superb piece of statuary, "The End of the Trail," at the Panama-Pacific International Exposition. More than 800 beautiful sculptures are shown at the Exposition, the works of famous sculptors of the day. In addition to the sculptures shown out of doors, thousands of beautiful works of art are presented in the great Palace of Fine Arts.



WONDERFUL GLASS DOME OF THE PALACE OF HORTICULTURE, PANAMA-PACIFIC INTERNATIONAL EXPOSITION, SAN FRANCISCO, 1915.

Palace of Horticulture, looking through the Court of Palms. This beautiful structure has a glass dome 185 feet high and 152 feet in diameter. Crowning the dome is a huge basket. The general style of the architecture is the French renaissance, with Saracenic modification. The extreme length of the palace is 672 feet and breadth 320 feet.

entire period of the Exposition, which opens Feb. 20, 1915, a series of great events, including sports and athletic contests of many kinds conducted upon a scale of great magnitude.

The Vanderbilt Automobile Cup Race and the Grand Prix, the two supreme events of the automobile year, will be held upon a four mile course, embracing a circuit of the Exposition palaces, a spectacular background far excelling in beauty and grandeur any which ancient Rome beheld during its historic chariot races. The Vanderbilt Cup Race will take place on Feb. 22 and the Grand Prix on Feb. 27, 1915. Great motorboats of the deep sea cruiser type will race for a \$10,000 prize from New York through the Panama canal to the Golden Gate. A series of international yacht races in the twenty-one meter class will be held in San Francisco bay. President Woodrow Wilson, Emperor William of Germany and King George of England have each offered trophies in these events. Swimming, water polo, fly casting, canoeing, football, baseball and long distance foot racing are included in a series of more than 200 different kinds of contests. President Wilson himself will attend the Exposition, and it is probable the members of congress will attend in an especially chartered steamer.

Of international interest will be the greatest live stock show in the world's history. More than \$500,000 will be awarded in prizes in a continuous live stock exhibit. Rare and valuable breeds of all kinds of live stock from distant countries of the globe will be shown. Specimens of the famous Chillingham wild white cattle will be exhibited for the first time. With the exception of two specimens at the London zoo, this breed has never been shown outside of Chillingham park, England. These cattle are pure white, with black noses, black tips to the ears and black horns. An international sheep shearing contest will be one of the unique exhibitions.

For the musical events there has been built by the Exposition the magnificent Festival Palace upon the grounds. This is equipped with a wonderful pipe organ, upon which Mr. Edwin Lemare, world famous organist, among other celebrities, will give a series of recitals. The International Eisteddfod will at San Francisco complete for \$25,000 in cash prizes. More than 20,000 singers will participate in

Imagine, for the purposes of illustration, the interest, action and novelty of ten great circuses like Barnum & Bailey's combined into a single "greatest show on earth" and presented at ten times the cost of the single production and an idea is gained of the originality of this section. A total of more than eleven millions of dollars has been expended in its establishment. The concessions, as these less serious features of the Exposition are known, include a great open air panoramic reproduction of the Yellowstone National park and a similar representation of the Grand Canyon of Arizona, presented by two of the transcon-

er arm, will raise sightseers more than 325 feet above San Francisco bay, affording an unsurpassed view of the Exposition City and the Golden Gate.

Apart from the amusements, conventions and congresses, the vast pageants, the superb pavilions of the nations and the magnificent state buildings, the Exposition itself is a sight well worth seeing. The giant exhibit palaces, the loftiest and most imposing exhibition buildings ever constructed, are in their architecture representative of the finest work of a commission of famous American architects, who freely collaborated with distinguished members of this profession abroad.



VAST TRIUMPHAL ARCH AT THE WORLD'S GREATEST EXPOSITION, THE PANAMA-PACIFIC INTERNATIONAL EXPOSITION, SAN FRANCISCO, 1915.

Arch of the Setting Sun in the west entrance to the Court of the Universe at the Panama-Pacific International Exposition. Surmounting the arch is a group of statuary representing "The Nations of the West." In the middle of the group is an emigrant wagon drawn by oxen. Riding in this is the figure of a woman, "The Mother of Tomorrow," and by her side are two children, "The Hopes of Tomorrow." Other figures represent an American Indian, a Mexican, an Alaskan and other American types.