

Redmond musical family moves to Nashville

BY LEO BAUDHUIN
Redmond Spokesman

Brendan Booher's life has always revolved around music. He has been in Central Oregon for about 20 years — first in Bend, then a couple years in Sisters before settling in Redmond in 2005. He's performed live music in the area and worked to teach others to do the same.

And now, he, his wife and their two kids are looking to take his career to a new level when they move to Nashville in October.

Growing up in a musically-talented family, Booher started piano under the guidance of his great grandmother when he was two. He took up the fiddle a couple years later. Since then, he's performed and taught music on an array of instruments.

Booher's instructional model focuses on ear training, improvisation and core music theory, he said. It's a method inspired by Booher's own music background, where from a young age he would improvise by ear along with other fiddlers.

As a teacher, Booher instructs people of all ages on piano and violin, as well as ukulele, cello, guitar and voice in a range of different music genres.

"One of the big things is just finding out what interests the students in their musical pursuit," Booher said. "That's been a big thing to me. It's customized student to student, how they can learn and develop at their own pace, enjoy the process."

Booher is now planning to invest that same attention to his own musical career in Tennessee. He writes mostly Christian music, along with a little jazz and country.

Booher said Nashville will give his family space to live a more leisurely life between recording sessions as well.



Brendan Booher and his wife and kids stand in front of a mural in downtown Redmond.

Photo courtesy of Brendan Booher



A young Brendan Booher poses with a guitar and fiddle.

Photo courtesy of Brendan Booher



Brendan Booher teaches children how to play a variety of instruments.

Photo courtesy of Brendan Booher

But still, he appreciates the Redmond community for the ways its shown up for him and his wife over the years.

"We appreciate the support of the community for our family," he said. "They have been great about being involved in

my business and coming and learning." Before the Booher family leaves town, they're plan-

ning a goodbye concert. Attendance will be free, Booher said, but people will have the opportunity to donate to the

cross-country move if they have money to spare.
■ Reporter: lbaudhuin@redmondspokesman.com

Redmond DMV to remain closed

Staffing shortage statewide causes delayed reopening of local office

BY NICK ROSENBERGER
Redmond Spokesman

After shutting down May 31 due to lack of staff, the Redmond DMV will remain closed for the foreseeable future.

"We're still having challenges with hiring," said Kevin Beckstrom, spokesman for the Oregon Department of Motor Vehicles. "That's been the issue with reopening offices."

The staffing issues are a problem throughout the state. A search of the Oregon State government hiring portal turned up 105 open positions for ODOT throughout the state, with seven openings in Bend.

"We have a lot of positions open and we would love to get them filled," said Beckstrom. "If you want to stay in Redmond or explore, we've got them all over."

Initially, ODOT thought staffing issues would likely be ironed out by the end of the summer and the Redmond office would be back in operation. That timeline has been pushed back, however.

Beckstrom said that although they don't currently have a timeline for reopening in Redmond, they're constantly monitoring the hiring office. The sooner they're able to fill positions in the region, he said, the sooner they'll be able to re-open it.

"When we can get it open, we will," Beckstrom said. "And hopefully that'll be soon."

According to Beckstrom, they need to hire a management position first. Once someone is



The Redmond DMV sits empty at 3835 SW 21st in Redmond after closing in May due to staffing shortages.

Nick Rosenberger/Spokesman



The Redmond DMV sits empty at 3835 SW 21st in Redmond after closing in May due to staffing shortages.

Nick Rosenberger/Spokesman

in the role, he said that will go a long way to getting the Redmond location back in operation.

While it can be a demand-

ing job and not always a happy place for people to go, Beckstrom said the DMV is a great job for people who are customer-service oriented.

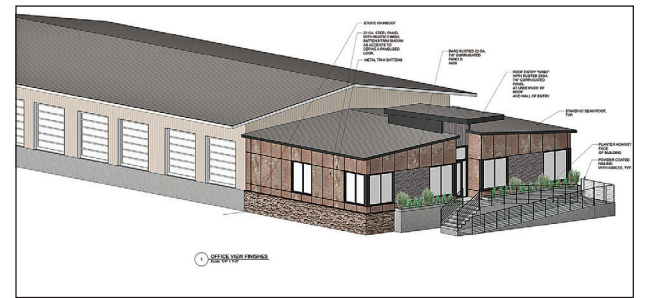
"(They're) great people to work with and it's a really good organization to work with, especially if you like to work with people," Beckstrom said.

Currently, Redmond motorists are directed to either use the Bend DMV, located at 63085 N Highway 97, or check to see if their needs can be fulfilled online at www.oregondmv.com.

"We offer so many more services online than we used to," Beckstrom said. "That's helped a lot because if you don't have to go in, that makes it a lot easier."

He added that the DMV's online services have also helped reduce waiting times for those that need to go in to the office. For anyone interested in a job, Beckstrom said to visit www.odotjobs.com.

■ Reporter: nrosenberger@redmondspokesman.com



A rendering of the proposed Diamond Line Trucking Transfer Terminal located at 1020 NE 15th St in Redmond.

Diamond Line building new transfer terminal

BY NICK ROSENBERGER
Redmond Spokesman

Diamond Line Delivery, LLC, will move to a new facility in Redmond at 1020 NE 15th St., where the company plans to build a 7,000-square-foot transfer terminal that includes 1,800 square feet of office space.

Currently, Diamond Line is located at 2183 SW 2nd Ct in Redmond — near the airport — but according to Ryan Cary, pricing manager for Diamond Line, they've outgrown the space a bit.

The new building, which is situated between Fuel Safe Systems to the north and Oregon's Wild Harvest to the south, will help fill out the ever-expanding Desert Rise Industrial Park on the east side of town.

Diamond Line will be leasing

the property from Fillmore Family Limited Partnership after it's constructed with engineering and design completed by the Bend-based CA Rowles Engineering & Design firm.

The proposed terminal will have 19 dedicated loading docks and 18 parking spaces for employees and visitors.

According to documents submitted to the county, "the proposed setbacks, height, position and overall design of the buildings are intended to complement the typical character of industrial buildings in this area of the city."

According to county records, the site was purchased from AGO, LLC., by Fillmore Family Limited Partnership for \$612,889 in March.

■ Reporter: nrosenberger@redmondspokesman.com

Smart security. Professionally installed.
Protection starts with prevention

Get FREE Professional Installation and Four FREE Months of Monitoring Service*
Use Promo Code 4FREE

CALL NOW TO CUSTOMIZE YOUR SYSTEM
844-894-8790
vivint

*Qualifying system purchase requires minimum \$599.99 equipment purchase, professional installation and applicable service agreement. DIY system purchases and reactivations of previously installed systems not eligible for offer. Offer not available in all states or provinces. Equipment purchase may be financed separately subject to an agreement with one of Vivint's third-party financing partners. Monthly \$148 cellular network maintenance fee applies. Taxes and local permit fees may apply. New Vivint Customers only. Financing eligibility and terms subject to credit approval by one of Vivint's third-party financing partners. Qualified customers may finance equipment purchase at 0% APR for up to 60 months. Month-to-month service agreement available when equipment is purchased upfront. System supports up to six cameras subject to sufficient WiFi speeds. Without a Vivint service plan, product and system functionality is limited (including loss of remote connectivity). Speak to a Vivint representative at the phone number in this offer for complete equipment, services, and package details, including pricing and financing details. Products and services in Louisiana provided by Vivint Louisiana Commercial Certificate #582290. See comprehensive Vivint license numbers on Vivint.com.

AT&T internet
FEEL THE SPEED, EVEN AT PEAK TIMES.

- Get strong, fast Wi-Fi to work and play throughout your home.*
- No annual contract.
- Power multiple devices at once—everyone can enjoy their own screen. Number of devices depends on service subscription.
- Over 99% reliability. Excludes 5G. Based on network availability.

AT&T INTERNET 100 Mbps \$45/mo

Contact your local DIRECTV dealer
888-486-6359

INTERNET OFFER: Sale, no charge and may be discontinued at any time. This offer limited to new residential customers. It is after \$100 service & equipment fee. Pricing for first 12 months only. After 12 mos., this pricing may apply. Service & equipment fee. Service of the quality of the service is not guaranteed. For full details and restrictions, visit att.com/offer. *Based on network availability. Not available in all areas. See www.att.com/offer for details. Restrictions: Offer available for AT&T service. Offer not available. Offer subject to change. Sale is limited to service of an unlimited term. ©2022 AT&T Knowledge Ventures. All rights reserved. DIRECTV, DIRECTV logo, and all other marks are trademarks of DIRECTV LLC. AT&T and all other marks are trademarks of AT&T Intellectual Property.

dish BRING EVERYTHING YOU LOVE TOGETHER!
ADD TO YOUR PACKAGE FOR ONLY \$19.99/mo. where available

2-YEAR TV PRICE GUARANTEE
America's Top 120 Package
\$69.99 MO. for 12 Mos. Including Local Channels!

CALL TODAY - For \$100 Gift Card Promo Code: DISH100

1-866-373-9175 Offer ends 4/13/22

All offers require credit qualification, 24-month commitment with early termination fee and AutoPay. Prices include Hopper Duo for qualifying customers. Hopper Duo is required for Hopper 3.55/mo. more. Upfront fees may apply based on credit qualification.